

COLOPHON

$$\text{distance} = \text{reading} \times \cos^2 L$$

$$\begin{aligned} \text{altitude} &= \text{reading} \times \cos^2 L \tan L \\ &= \text{reading} \times \sin L \cos L \end{aligned}$$

minus height of pole

Index pp. 149 - 155

Index pp. 149 - 155

11. 10. 1922.

Apr. 12, 1922. The moving of the heavy equipment of the expedition was made difficult at the customs house in Smyrna because it was sent with a bill of lading (as freight). In spite of the orders from the "proposia" to have the goods go through free, there were many officials to see, and a whole morning was wasted at the customs house alone. Even in convenient baggage, if in any way possible should be brought with the passengers and entered through the small customs house as personal baggage. With an order for free entry of baggage, this is quite easy. At the large customs house one must be accompanied by a man who understands Turkish.

Carts and carriages in Smyrna are found at the Customs House landing. Another large carriage stand is behind the Grand Hotel Ependis Palace. For moving heavy luggage across the paved shore front, a duty is charged by the French company which work the telegraph (offices opposite the large customs house).

There are two carts for transport in Dersimdere, two in Develibey and about 20 in Malkadjik.

Banjans is the less disagreeable and more reliable of the two cart owners of Develibey. Those in Dersimdere, who speak only Turkish, are apparently reliable. A Turk named Doumouss at Malkadjik controls about 12 carts and is very high priced. I found one Greek, Avabios, easier to deal with especially if his patriotism as being a Greek was appealed to.

2. Cards run with difficulty, from
Machadik to Duvendire.

April 21, Friday.

Work in loamy long trench
below terrace. Trench No II.

Trench opened 7 meters by 2 m.
in loamy soil intermingled with
many loose stones.



See diagram Stone A, found as
shown with face down.
Overall dimensions

77 long, 45 wide, 35 deep.
The face and top and bottom are
roughly picked. Next to the face on
the inside are small pieces of 10 cm.
The back of the stone and rest of ends
is left rough. The stone is clearly not
in situ (with face down) and apparently
fell from a wall construction above.

Stone B was found on a higher
level, as shown in diagram, 1 meter
higher than Stone A. The stone does
not seem to be worked, but the upper
surface was approximately flat. When
passed the upper surface inclined
downward toward the west at an
angle of 30°. Upper surface 60 x 55 cm
thickness 35.

Photograph 1, (Mr. Clerks Camera)

11:30 morning, from east showing view of
trench. Camera set at point S of
diagram.

noon

Beneath Stone B and still higher
than A were several other large
stones, in line, unworked and
slightly smaller than B.



Same as other page showing field
of small stones

In the afternoon we cleared away
the small stones in the center of the
trench. They seemed to be a slow
accumulation of the result of humbling.
They were not closely packed at least
mingled with a great quantity of
loamy soil and none of them
were worked. The prevailing size
was of one and two man stones.

At 5:15 we came across 2 large
stones C and D as indicated below,
under the rubble and on the same
level as A. They are 120 cm below surface.



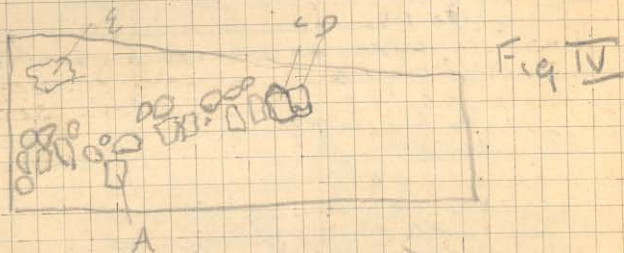
Their tops are approximately flat
but they do not seem at all worked, not even
where they join.

End of Day

April 22. Saturday

In charge of trench II.

In the western end of the trench we dug down and continued to find a few loose stones mingled with the loam. There appeared to be, however, on the level of Stone A and in line with stones C and D a rough wall running diagonally across the trench.



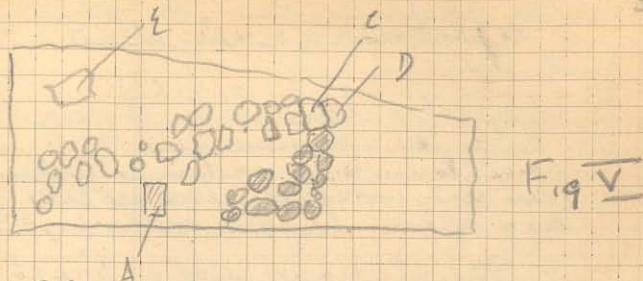
See pg. 24.

Practically all the pottery fragments except some pieces of sherd were found in the corner of the trench enclosed by this wall.

Large stone E in corner of trench appeared on a level 25 cm. lower than A. It is entirely unworked.

C.5 / 11:00 A.M. 2nd photo of trench II from west, showing wall, stone A to left, and stone E in right far corner. no 4 on film roll. Meritt Trench II, 2.

At a depth of 40 cm. below stones C and D a second wall was laid bare, running from north to south, - not quite at right angles to the wall shown above.



Shaded stones belong to the second and lower wall.

As the trench we down rocks of various sizes appeared on both sides of walls 1 and 2 and it began to look as though the whole accumulation were a hummock.



The above is the appearance of trench when excavated to a depth of 50 cm. below the C-D level.

C.6 / At 4:00 P.M. photo from western end of trench showing rocks as in the above picture. Meritt Trench II, 3.

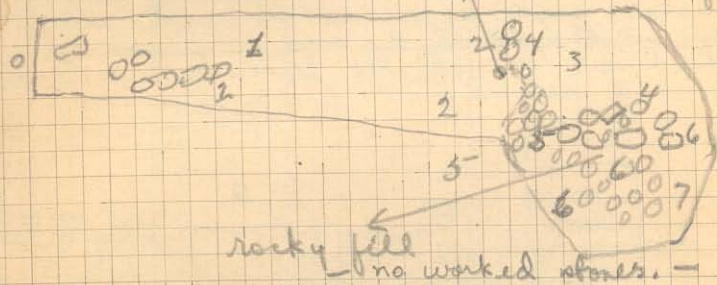
At 4:00 P.M. I took over trench III from Mr. Steyer. In the lower part of the trench the men had gone down to stereo, and only in the upper part were many stones in evidence.

The following is a plan of the trench at the site I look at over:

width - lower end 2 meters.
length lower side 11 "
width - upper end - 10 stones
4 meters. - from here starts general line of the upper side.

Bay at upper end of trench has sides 2 meters long.

Point where geometric sketch was found.



The figures mark the level in meters, with the zero point at the lower end of trench.

The row of large stones which bisects the large end of the trench appears to be false rather than a wall. The individual stones are separated by approximately the same volume of lumpy earth mixed with smaller stones.

C 7 → Photo taken at 4:30, from the N.W. shows the row of stones in question and the earth between them.
Merritt Trench III no 1.
no 6 on film roll.

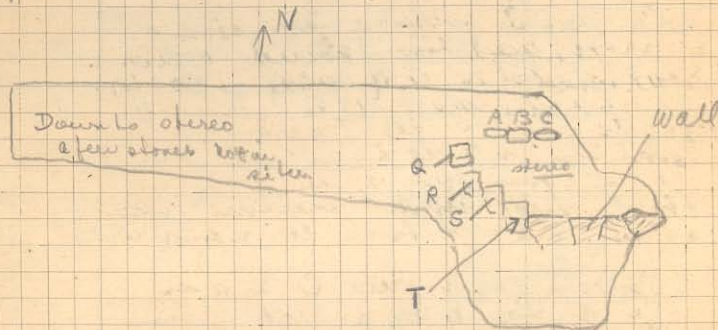
The Tsapa is on the top of ^{one of} the rocks in question in the photo.

At 5:00 P.M. under stone A in trench II we unearthed another worked stone apparently rough dressed on every surface and rectangular.

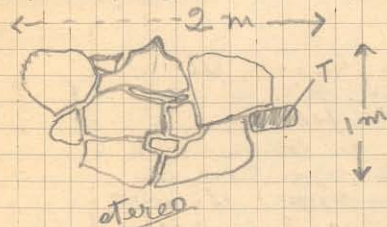
The pottery found consisted almost exclusively of 50 fragments of plain red tile.

April 24 Monday.

In trench III we dug down below what appeared to be the wall bisecting the eastern end of the trench and found the real line of the wall, which followed very closely the line of the rubble blocks mentioned above.



South elevation of wall shown in above sketch.



We dug down to stone below the wall and then proceeded to clear the face toward the west.

Stone T as shown in the diagram

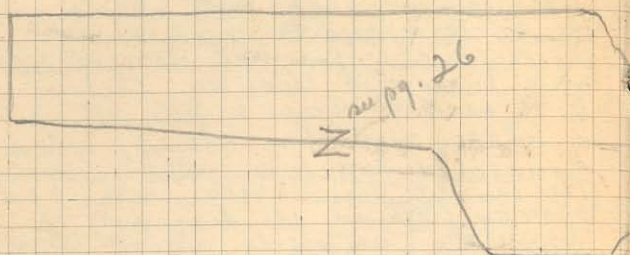
above projected at st. angles to the wall for 20 cm. and was bound into the wall, whether intentionally placed so or displaced as a result of thrust from above was not clear. Stones Q, R, and S were thrust still farther forward in section and were not tied in. Below Q, R, and S, were a few stones of shale, and then stones, which consisted here of a shale formation. The rubble from above, marked April 22, seems to point toward a bulging out of the wall at this point under pressure from above rather than to a lower.

Stones H, B, and C appear to be a line of wall resting on stone. There is no continuation of the line, however, west of A. We removed some of the stones from immediately in back of the stones. In front of them (to the north) we found some shreds of coarse, soft, red ware.

To the east of trench III we opened about 9:30 a.m. an another trench, to follow the line of the wall discovered in trench III. In the upper layers (0-35 cm. diam. app.) the soft rough red ware predominated. We went down only outside the wall. Four of five small fragments of classical black glaze ware appeared.

Continuation
of III.

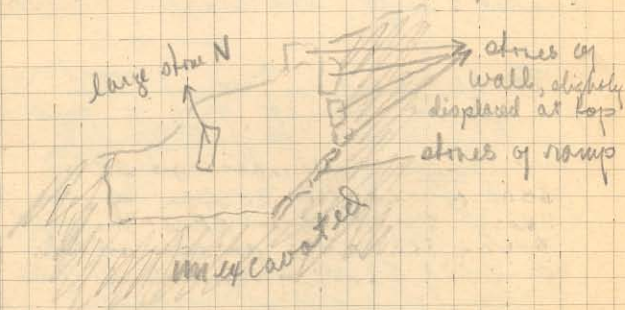
The following is a



Shaded stones barely show on surface of the ground, along line of wall. They do not however appear to be in situ. The block marked M in the design above we removed just to the east of it.

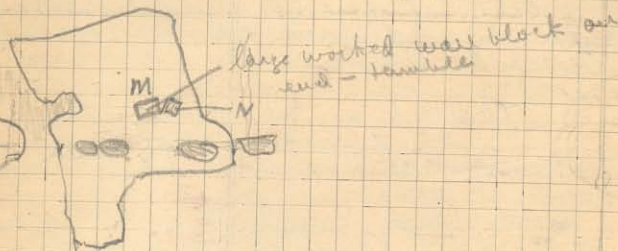
In digging from M and N to what appeared to be a ramp, inclined bottom of the wall.

Cross section of trench



sketch of the combined trench.

Scale - 2 squares = 1 meter



surface of the ground, along line as to be in situ. The block marked Another (marked N above) appeared

the line of the wall, we ran across at an angle of 45° to support the

- looking from west to east.

During the afternoon we laid bare a larger section of the ramp and began clearing away the soil between the two sections of the trench.

12 April 25 - Tuesday

In charge of Trench III and Trench on Mt Point

In Trench III we cleared away the soil between the two sections of trench and laid bare the scarp beneath.

Trench on Mt Point

Scale 2 blocks = 1 meter. (See next page)

Plan of Trench on Mt Point

In the area marked on the plan on the next page we dug down through rather hard, somewhat clay-like soil with fragments of rough-red pottery and tile in it. A wall 60 cm. wide separated the two regions of work.

At a depth of 18-23 cm in the section marked A in the diagram we struck a layer of burnt material. The soil was very black and full of carbon. Some small sticks of wood were found as charcoal!



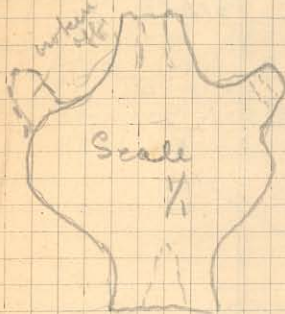
life size

The black carboniferous soil was close to the wall at the depth of 23 cm. extending out only 50 cm. to the east.

In digging down in section B a wall appeared as shown in the sketch - labeled m.

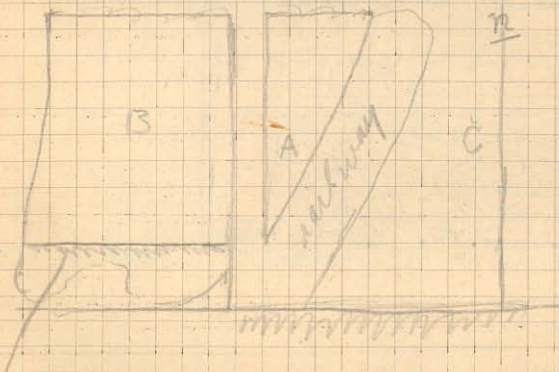
Another wall appeared to east - (wall n in the plan) and along the western base of it (C on plan) were charcoal remains of burnt wood, at a depth of from 30-50 cm. below the surface.

In section C to east of railway were found 6 iron weights and one tiny vase:



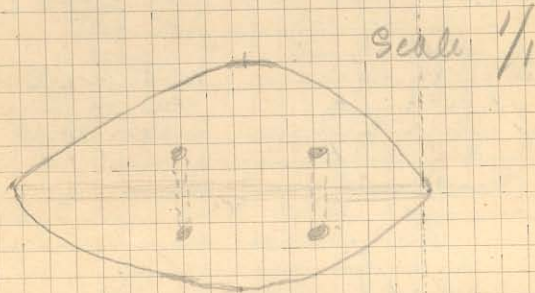
In section B the wall n seemed to turn north

Scale 2 blocks = 1 meter
Plan of trench on point



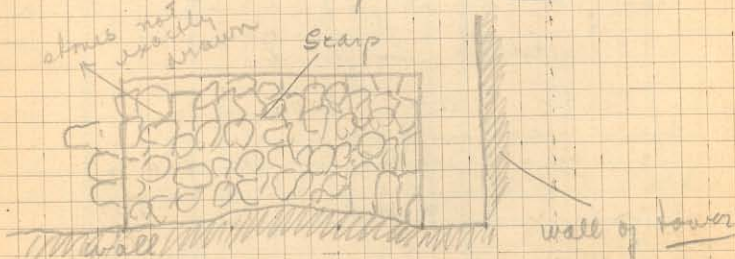
wall m

In Trench III we cleared the scarp further and dug down trying to find the extent of the scarp toward the north. A loose weight of yellowish stone and sized was found wedged in between the scarp and the wall.



To the east of the section already dug we proceeded along the wall. The scarp ended in a fairly nice straight line, and then below, further the wall returned, apparently in a tower.

Scale, each square 25 cm.



The scarp apparently stops in a straight line as shown in the plan with a row of stones set up on edge. The stones of the scarp itself are for the most part roughly oblong hard flat surfaced, - all inclined at an angle to 45° to form the scarp.

Near the corner of the tower we found the coin shown below, a bronze coin with a head on one side; the reverse was too much covered with encrustation to be discernable.

Rough sketch below:



350-300 B.C.

Coin
1
15

Photograph No 7 on Roll

Photograph of the first section of wall found in Trench III, taken from across trench to north. The ledge of scarp is visible to the left.

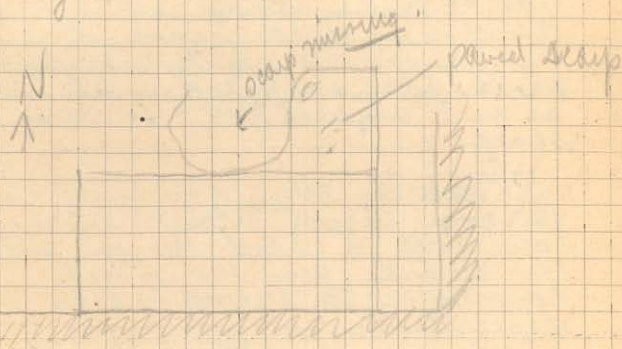
Trench III no 2.

Photograph No. 8 on Roll

taken from west into second section of Trench III showing scarp and return of the wall to form the tower. Trench III no 3.

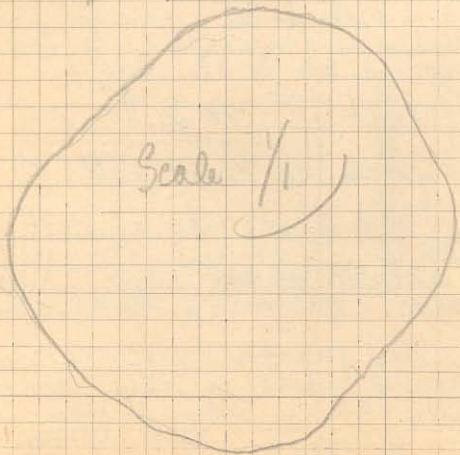
We dug further below the scarp and found that it still continued downward. We also began to clear away the dirt along the lower edge of the scarp between sections 1 & 2.

In one place some of the scarp was missing; as shown in diagram below.



We dug down here below the level of the scarp and found a much higher % of shrapnel. Some cooking vessels were almost complete, though in fragments. They were badly rusted together.

A round ball of iron was also found.

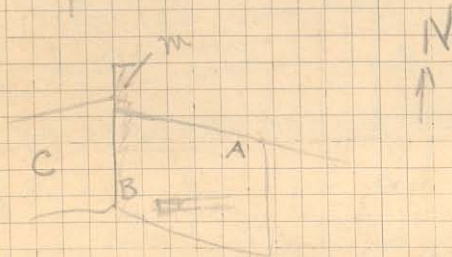


April 26, Wednesday. 17

In trench # we dug to the west of the tumbler in the western section trying to find the face of the wall. Nothing however, appeared, except loose stone. Work was suspended because of rain.

April 27 Thursday.
The charge of Trench VI

We opened the trench on both sides of a wall appearing, *see plan*
1 square = 1 meter

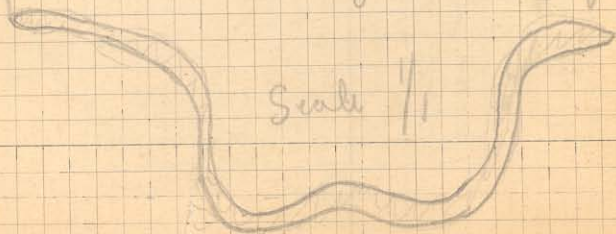


about 100 m. below the surface the soil was very hard and clay-like.

At point A an *elampan* along carbonized wood was found at a depth of 25 cm.

Charred soil found at point B at depth of 15 cm.

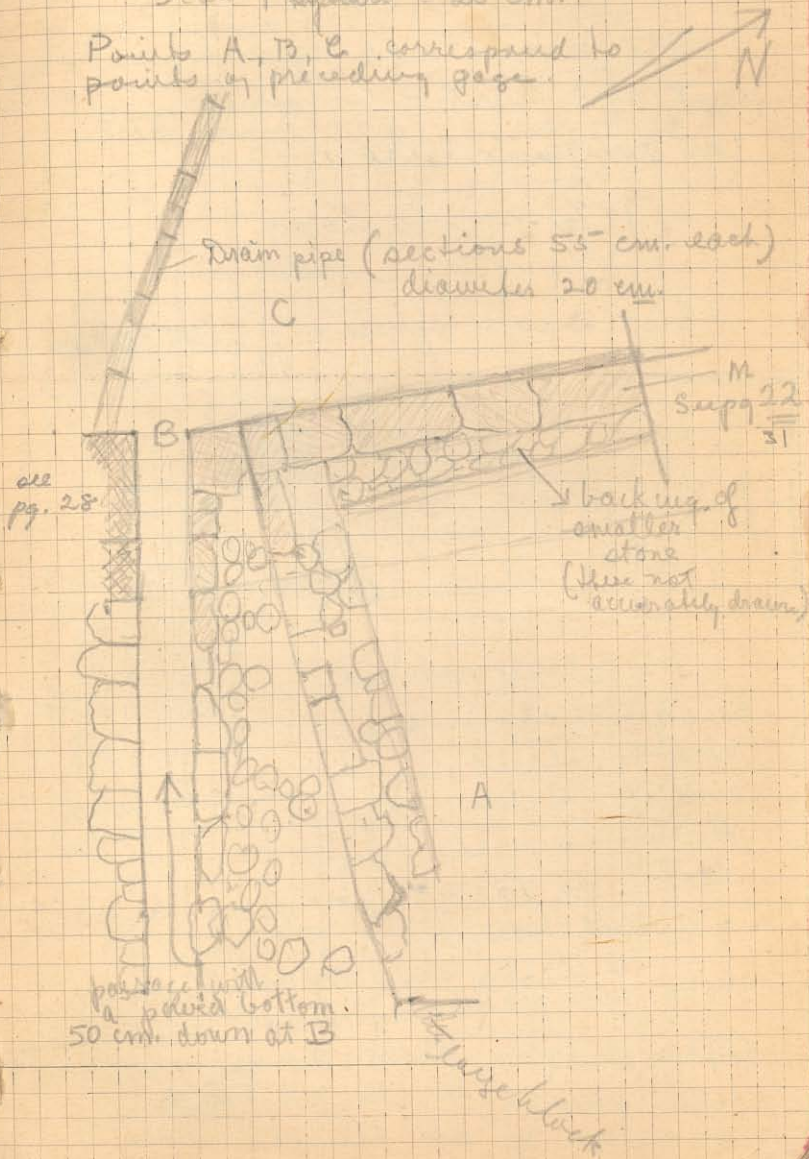
At point C, depth 60 cm, below top of wall m, a bronze handle was found



Following is plan of Trench VI 19

Scale 1 square = 25 cm.

Points A, B, C correspond to points of preceding page.



In Charge of Trench VII.

The trench was opened, running east and west - as shown in the diagram below.

14 1/2 meters long
3 9/10 " width

Scale each square = 1/2 meter (50 cm).



The stones marked as paving stones are roughly placed together, and the section along the south of the trench looks as though it may be part of a wall construction.

Flaring of small stones, (30 x 30) 10 cm. below surface.

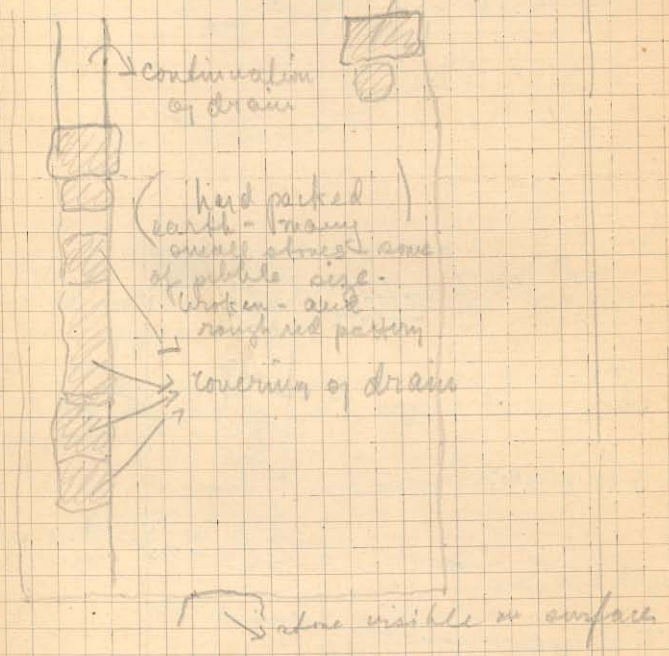
A wall of rough construction does run diagonally across the trench. After digging down 20 cm. stones was found in the shaded portion of the trench.

In trench VII we dig further to the east, as shown in the plan below.

Length 540 - East width 350

Scale 1 block = 25 cm.

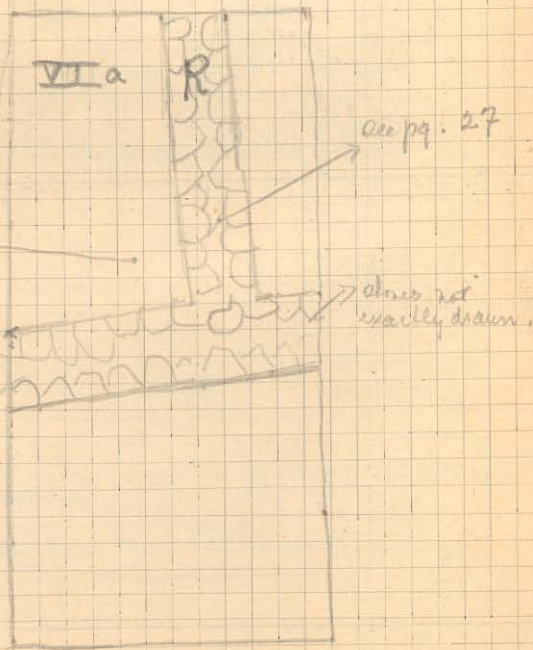
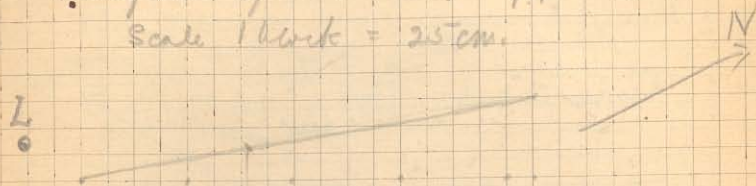
large block plan 19 → N



See opp. page Photograph no 10 on roll.

Trench VII no 1, View of trench from east.

Trunk VI was continued to north
 along line of west wall, see pg. 29, 31,
 Scale 1 block = 25 cm.



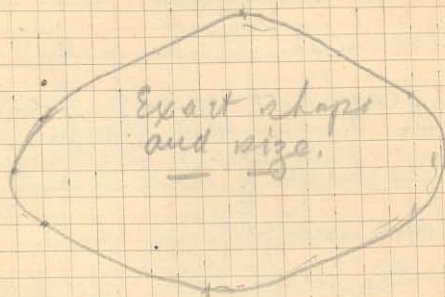
bits of red plaster

depth of 15 cm

bits of red plaster

does not exactly drawn.

at L (page 22, a large wt. lens
 found (depth 20 cm. below surface
 of wall)



Trench VII was also opened East
 by the extension of trench VI shown
 on opposite page.

A wall appeared (East West)
 at a depth of 15 cm. R on plan
 opposite

The pottery from trench II was
(see pg. 4) gathered and consisted
of the following:

- ca 40 fragments of poor Greek tiles
- 3 " of a large pittoe
- ca 40 " of large coarse jars
- ca 8 fragments of Late black glaze ware
- 1 loom weight

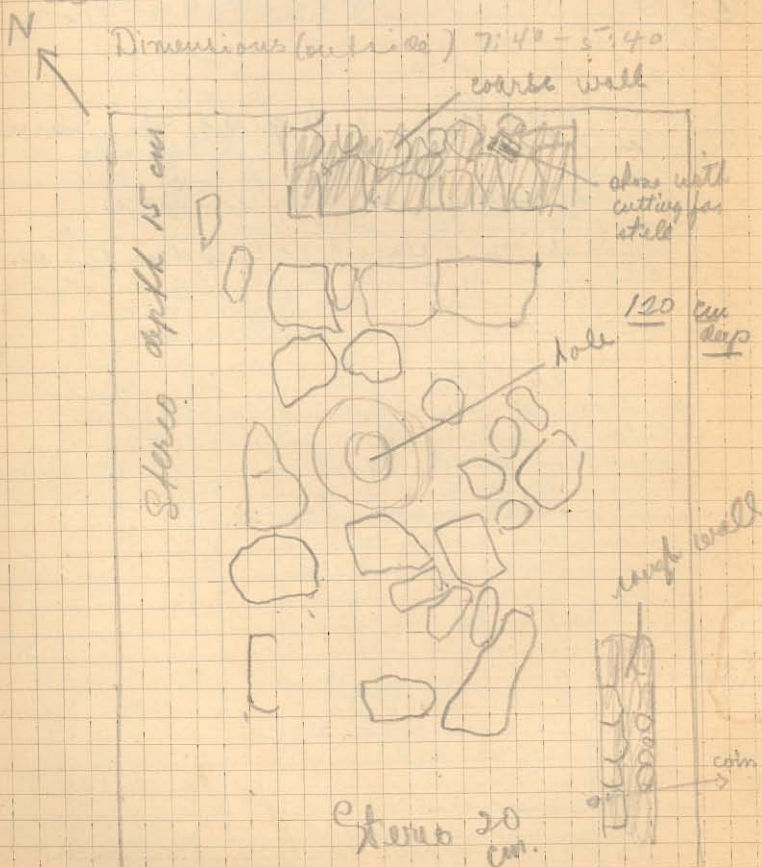
Outside the wall (?) in trench II
large mass of fragments of plain
red tiles

- 2 loom weights of Leucisid form
- 100 mm fragment of plain red tile

April 28 Friday 25

In charge of trenches IV, VI,
VIa and IX.

Trench IX was opened in the center
of the point of the terrace, as shown
below.



A small bronze coin was found in trench IX at the point marked in diagram (on page 25). It was at a depth of 20 cm below the surface.

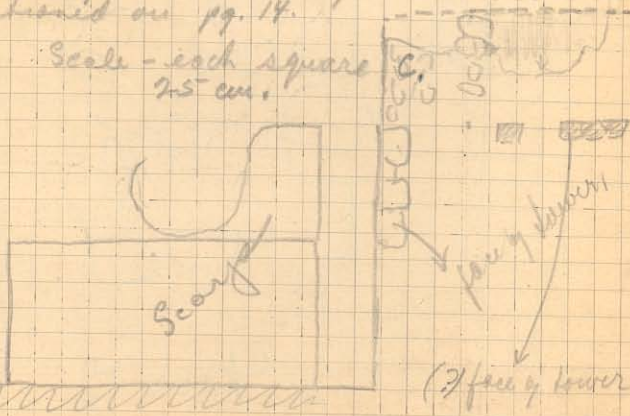
Coin 2
26
350-300 BC



In trench III we dug at the point marked Z in the diagram on page 10, and found the continuation of the wall, in very ruinous state. There were many loose stones of various sizes on either side of the wall, but no indication of the scarp found in the eastern end of the trench.

We then opened the eastern section of the trench farther in search of the corner of the tower mentioned on pg. 14.

Scale - each square
25 cm.



In trench VI a, a cross wall developed - see pg. 22. depth 20 cm.

In trench III the face of the tower to the north appeared (as in plan opposite). The following coin was also found at the point marked C.



Scale Coin 3
1/1
400-350 BC

Photograph no 1 on roll

Trench VI no 1 from NW showing drain pipe - heavy wall - house wall - drain beyond.

In western end of trench VI we dug down to 70 cm below the threshold of the drain. The pottery found was chiefly fragments of the same sort as used above.

In trench III the true face of the tower appeared to north, with the return at the corner.

Photo no 2 on Roll
Trench III no 4. From point shown

April 29. Saturday

Trench VI was continued

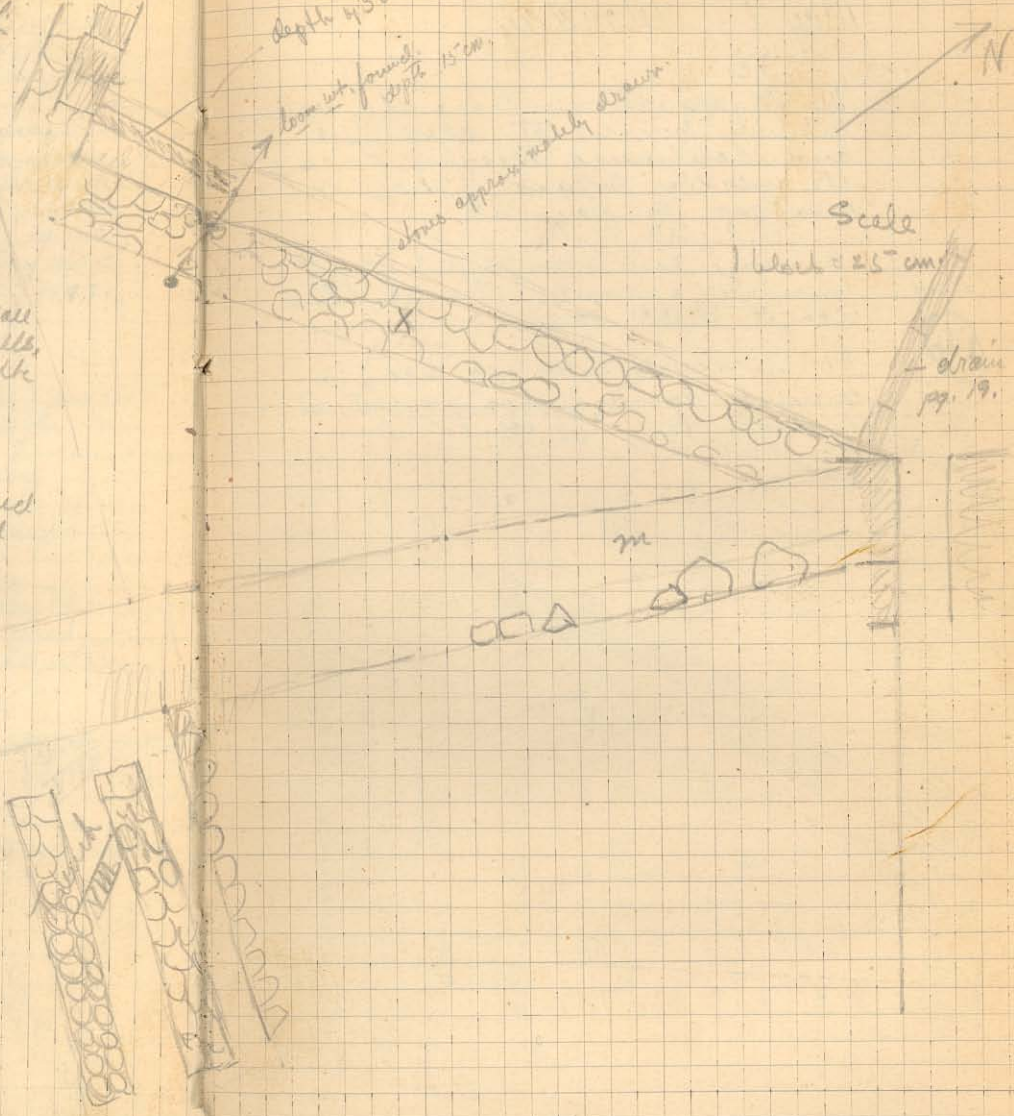
to the South and South West along the line of the large wall marked M on the plan at page 19. see plan on opp. page.

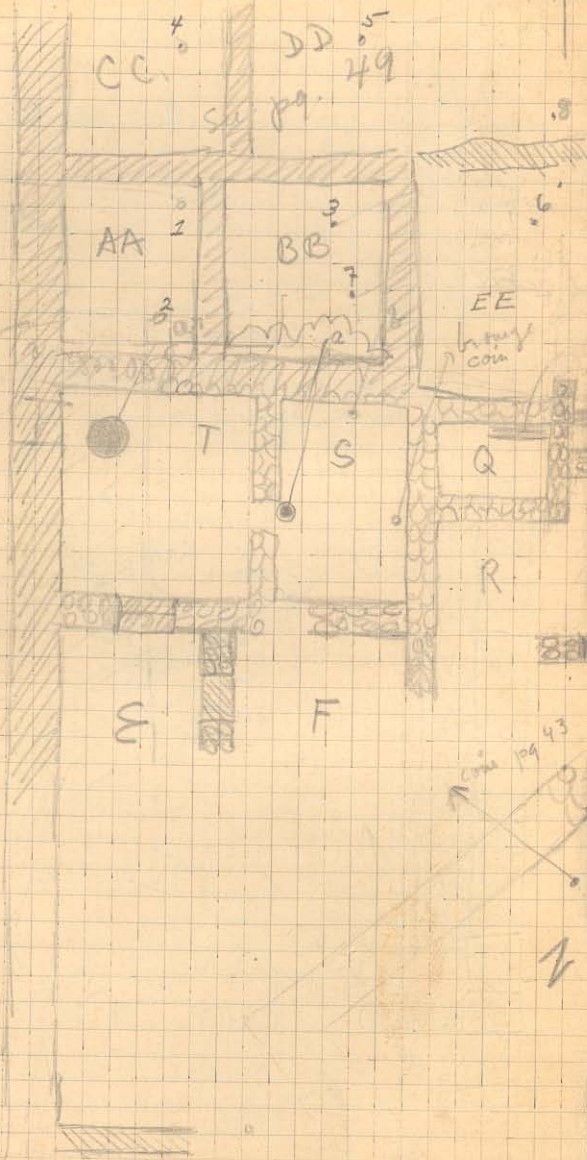
The excavation North West of wall m uncovered a series of walls, some of which are shown in the plan on the opposite page. South East of m we struck nothing of interest.

The following is the size and shape of the loom weights found as indicated opposite:

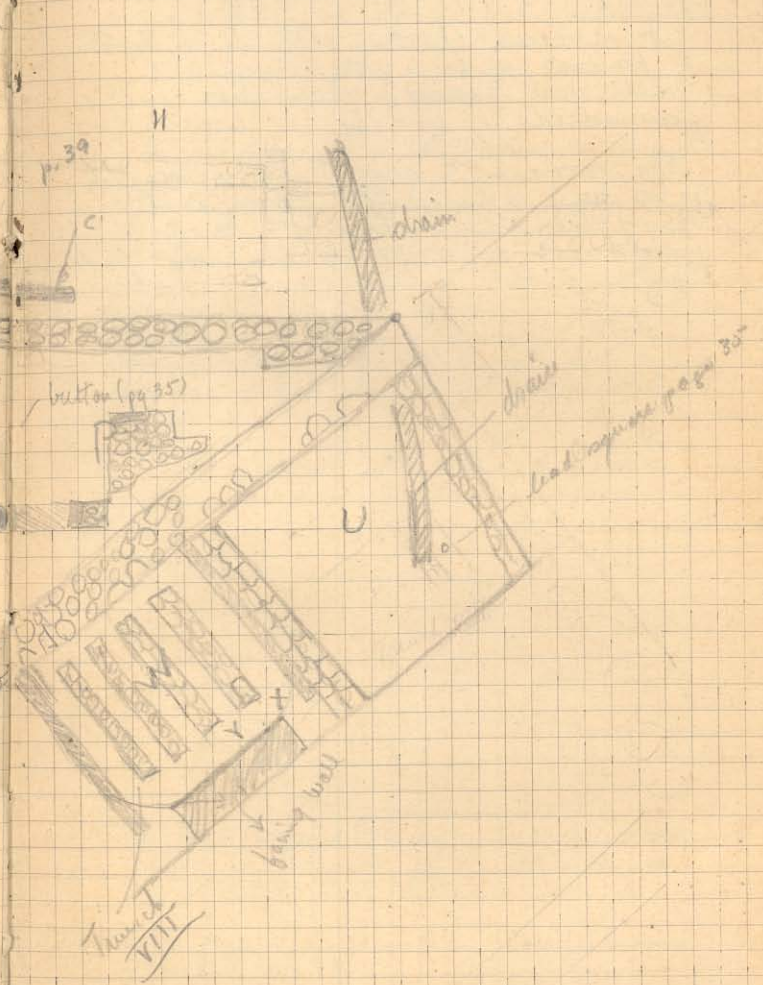


Trench VI





Scale = 1 square = 50 cm.



Trench VIII

In room P, pag 33 down to a depth of 40 cm. about 50 fragments of tile were found.

In rooms G, and R, to a depth of 60 cm. about 150 fragments of tile were found. There were only a few shards of coarse red ware.

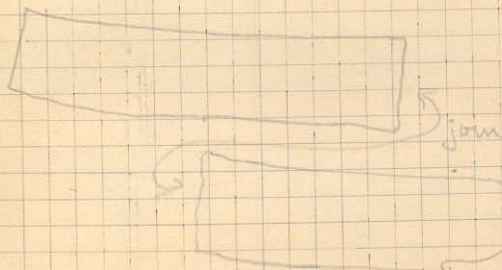
In rooms S and T to a depth of 60 cm. about 95 fragments of roof tile were found, and fragments of several cooking pots. One cup.

May 2 Tuesday

At point L in diagram of page 31, a lamp was found. Entire, except for the broken nose. Diameter of lamp 60 mm. diameter of opening on top 18 mm.

In section P of diagram on page 31 there were very few fragments of tile, and much dirt pitting in the soil. The shards became better sorted and most of them were covered with a black glaze, not of the most desirable and brilliant variety, however. This black glaze shade began to appear at a depth of from 75 to 80 cm.

At point P also a piece of bronze implement was found.



A lead sphere (1 in dia), $\frac{1}{8}$ in thick was found as shown on pg 33, at a depth of 40 cm.

A button was found on wall between R and P, pg 33.

Material Bone.
Depth 15 cm.



In trench VI a we continued down and cleaned the room shown on page 31 to a depth of 120 cm. In the corner by P, black, charred earth was found at 100 cm. in small quantities.

Further excavation to the North of trench VII (toward VI) revealed two more sections of wall and then another facing wall before the north wall proper. (See pg. 33) At x, a quantity of fragments of cow's milk was found, about 100, and several were put together almost entire. This was done to a depth of 50 cm. At y, two tiles were found, of which 2 were put together with few missing pieces.

We also began cleaning out the region between the trench VII section and the drain. (See plan, pg 33)

At point 4, again, at depth of 50 cm, a lead clamp was found of doubtful variety.

In trench VI a (pg 31) a drainage channel appeared as shown on the diagram, depth 75-80 cm.

Photo. No 4 on Roll

C26 ↘ Trench VI a (Interior of Room from N.W.)

C27 ↘ Photo No 5 on Roll
Trenches R, Q, S, T, pg 32-33
from point N.W. of T.

C28 ↘ Photo No 6 on Roll
Trench VII from West.

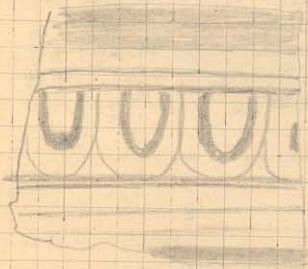
May 3 Wednesday.

2 trenches II - II a we continued down in the western section from P to Q in plan, pg. 31 and at a depth of 140 cm below the corner at P we came into a layer of sandy soil which ran through to A horizontally. At Roman numeral II on the diagram it is 100 cm below the surface.

From 80 cm down to 120 cm in corner of trench II at P there was very few finds of any variety, but many red bits. We gathered as many as 200 fragments in going down the 40 cm. There were also several fragments of rough red pots.

From a depth of 120 cm, design pottery began to appear.

in a black or red pattern well polished and with a heavy glaze paint.



Scale $\frac{1}{2}$

There were also examples of the red and brown - and some fragments of three-color ware.

Red and brown - our yellowish gray.

Three little jets were also found.

In section S (pg. 32) a bronze coin was found as marked on plan. Depth 45 cm.

Coin 5

(53)

850-nc

pg. 32 "a" is a small beam of 30 cm deep. It was covered with 6 round terra-cotta plaques.

At a depth of 50 cm. at a point marked b in section S of pg. 32 plaster was found mixed with burned wood. At the same depth in section Q was found near the wall (at same depth with the wall represented by the small section c. to the north of P in page 33.) the wall shown as d.

In trench IX in the corner by the wall excavations were resumed the trench was extended to the north, and along a line of wall to the east (see page 44). Directly north of the square of stones 15, the ground was fully quarried of shrapnel and bone of animals. A loam weight was found:



Good size + shape

In trench VII and VI (pg 31)

The pottery gathered from a depth of 140-160 cm below the cornestone at P was as follows:

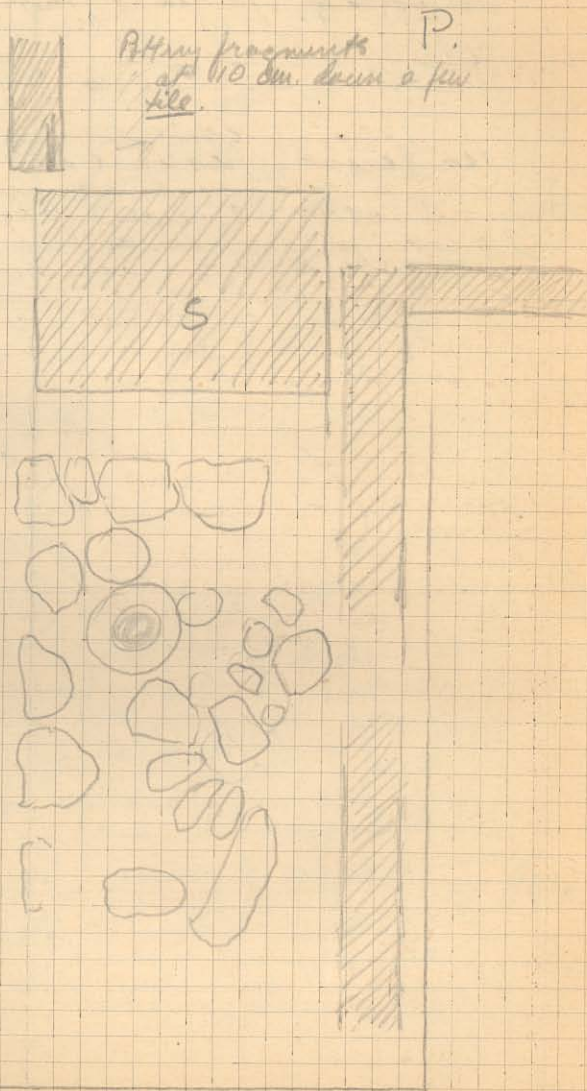
at L, quite a few rough red shreds, some few wares however and on in bits with patterns

at P. Fragments of lit and rough pottery - not a true classic and pattern ware shreds.

at A and B - a larger % of classic shreds and less coarse ware. Also a larger quantity of shreds.

In section X of trench VIII at a depth of 50 cm, were found few fragments of terra-cotta figurines.

- (1) A female bust
- (2) a female(?) head
- (3) male legs (horse gear)
- (4) one leg - indeterminate.
- (5) torso



May 4, Thursday

In charge of trenches VI, VII, VIII, over to V.
In charge of IX, X, Y, Z, over to V.
In charge of XI, XII, XIII, XIV, over to V.

VI, VII, VIII, IX, X, Y, Z as shown in
pages 32-33

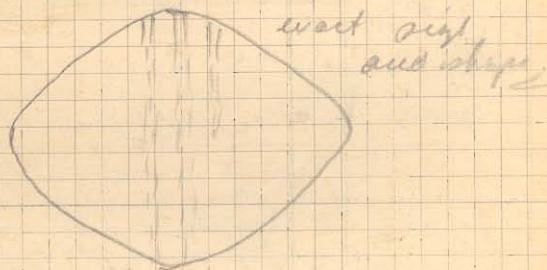
The shreds taken out
to date are as follows:

Section P depth 40 cm - 50 cm

50 Pan tiles fragments
Parts of 2 or 3 large red clay pots

Section Q depth 60 - 70

15 fragments of pan tile, one brown
underglaze



exact size
and shape

Section R 60 - 80, one fairly
preserved red ware cup (taken to house
May 3) - 100 fragments of tile. Frag-
ments of rather fine Hellenistic ware
(not painted). Several shreds of
black glaze

Sections S and T. See page 34

Section U. to Depth of 100 cm.

200 fragments of pan tile, a few
fragments of cooking pots and
large storage jars.

Section W at points X and Y especially
depth 0 - 80, 300 fragments of
pan tile - pan and cover - fine
fragments of terracotta figurine
(see pg. 40), about 75 fragments
of large yellow and red clay jars.

In section Z of plan pg. 32 a
small bronze coin was found
as indicated - on the surface.

The workmen began this morning
to clear away the dirt from
the section to the south of S
and T and to the West of Z.

Photo No 2 on Roll
C30 view of section EFQRS from
the west, across the paved St. pg 32.

Photo No 3 on Roll
C31 view of section TSF from NW.

Photo No 4 on Roll
C32 view of sections SRQ from west.

In trench X excavations continued
to the North West. What seemed
to be a pavement of kiln
chips appeared at TP (pg. 141)
and we cleared away the dirt
from that section. A coin was
found in the clearing away
by the dirt, silver coated.

400-350pc

(115)
Coin 6
~~107~~

(104)

May 5 Friday

In charge of trenches VI a - VI,
VIII and section, as shown on
 pg. 32 over to I.

This morning we opened up
 the section South West of Z,
 and continued South along. We
 paved street to the West.

In the paved street, west of
 E pg 32 a bronze rim was
 found. Person on one side and
 Com 7 belated head on other.

⑥
 350-300 B.C.



Com 7 was found in the layer
 of soil 20 centimeters above the
 pavement of the street.

May 6 Saturday

The man who owns the fields
 just inside the gates in the wall
 toward Traje is named:

Kolji Mactum.

كولجي ماکتوم

At Traje a stone with
 a very late inscription was
 shown us by Osman Effendi,
 in an open yard above the
 stone.

The fields near the round
 towers are called: -
 Kara, kait - Ozo

May 8, Monday.

In charge of section from
II a to paved street through
I. See pg 32. - pgs 48-49.

Nine workmen.

In digging down through the section
about pt 2 (pg 48) there
occurred a layer of tile in
enormous quantity at depth
level with top of wall preserved at
point 4. At point 2 several tiles
pots and a small figurine were
found, the figurine was of a boy in
reclining position, back broken
away, head gone.

We continued to dig down in
sections 2 and 6. The soil in
section 2 was quite full of tile
fragments, and fine to the soil
was of a yellow claylike nature,
with numerous numerous tile fragments.

C 39 / Photo Roll no 5. Photo from
point 5 toward 3 and 6 (pg. 48) ←

May 9 Tuesday

In charge of section from
I through III a.
See pg. 48-49 - 50-51.

Sixteen workmen.

We worked on left side of paved
St. through Tract I (main rd.) at
the South eastern end.

At pts 7 and 8, pg 48, plaster
appeared at a depth of

100 cm below top of wall at pt 7
30 cm below top of wall at pt 8

The plaster at pt 7 was very coarse,
about one inch in thickness and white.
It had fallen from above to the floor.
At pt 8, there was also temple plaster
on the floor, and a few fragments
were still preserved in the very corner
in situ in the wall. The plaster has
a very thick body, and a somewhat
reddish color back of the 1/4 inch on
the face.

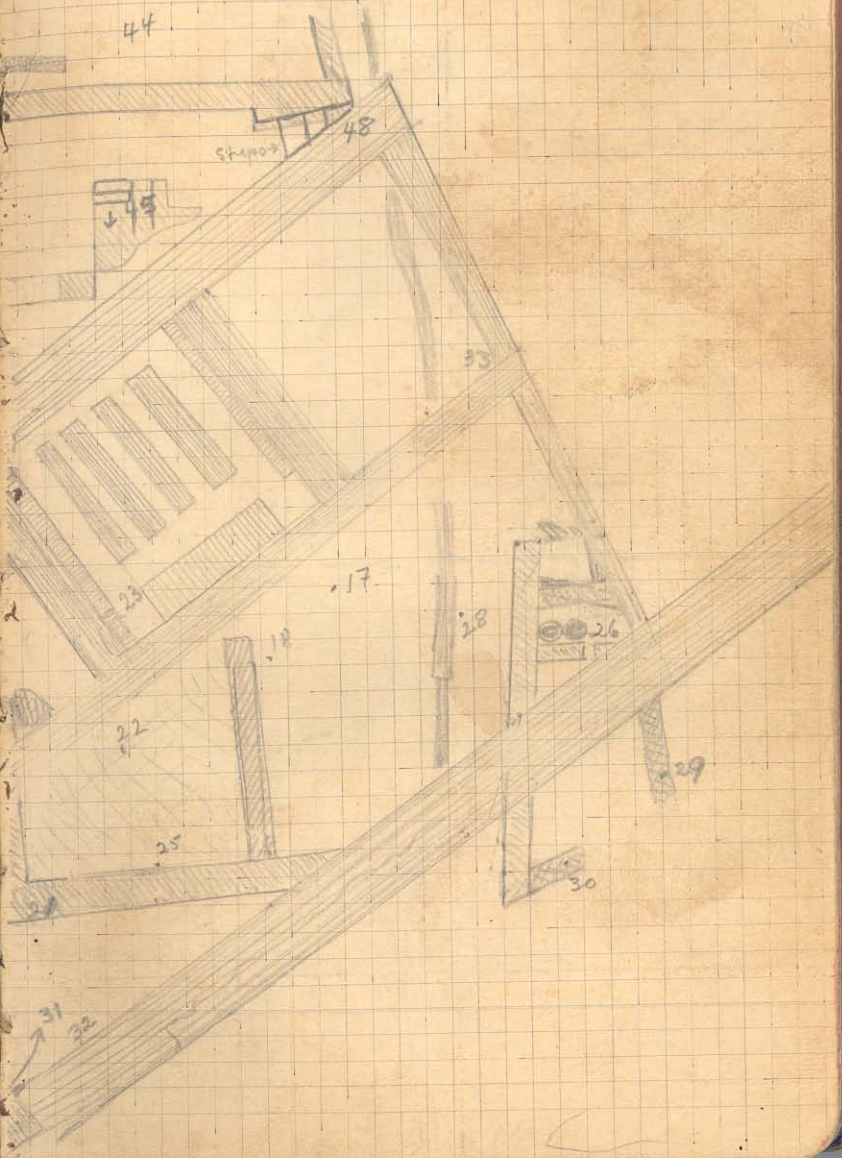
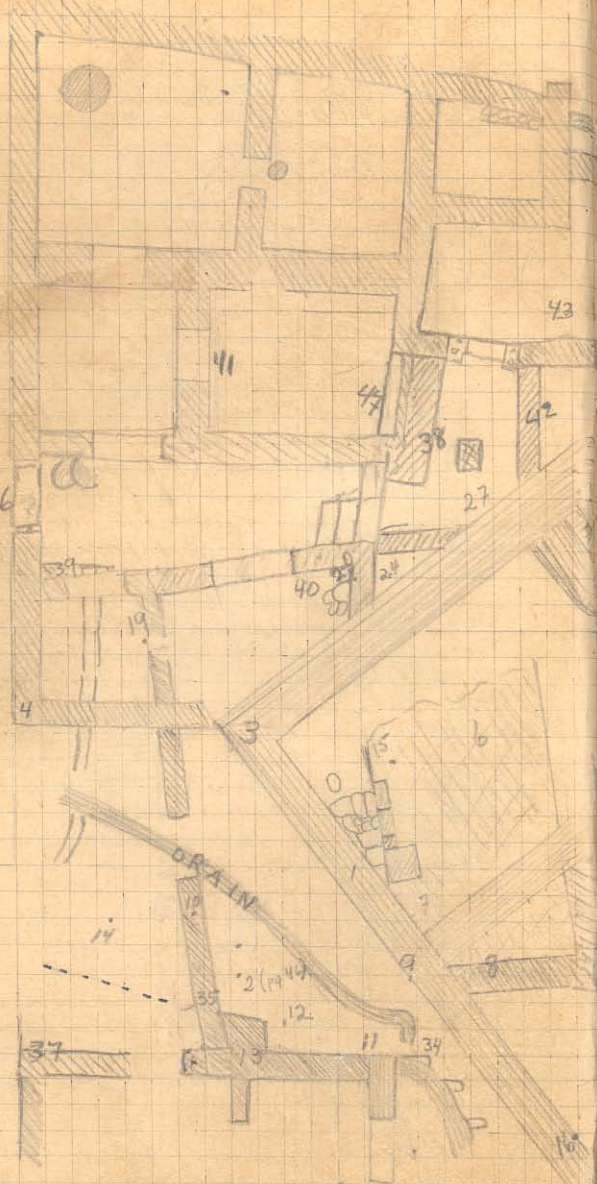
At pt 1, pgs 50-51 a bronze coin
was found and a small bone button
Depth 10 cm below level of
shale at 2. Coin
214
400-350 (?)
cm
9

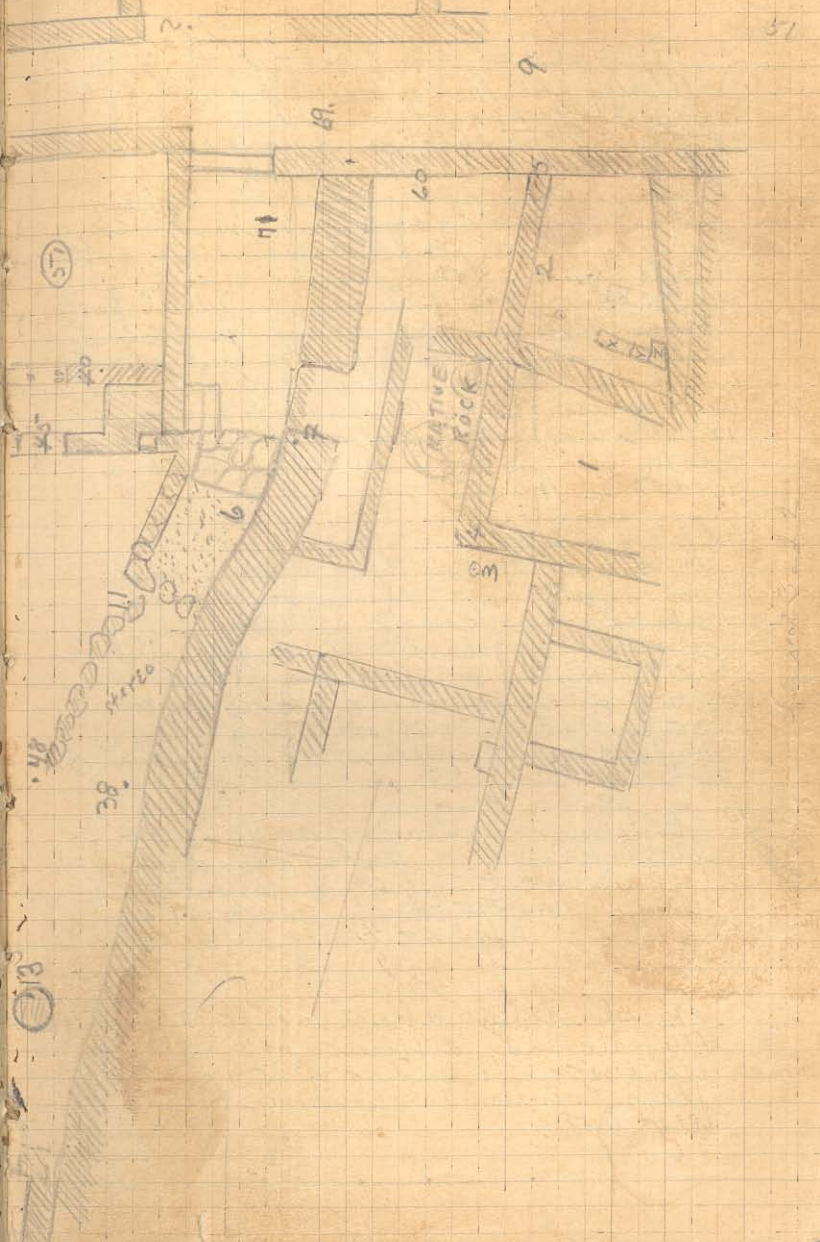
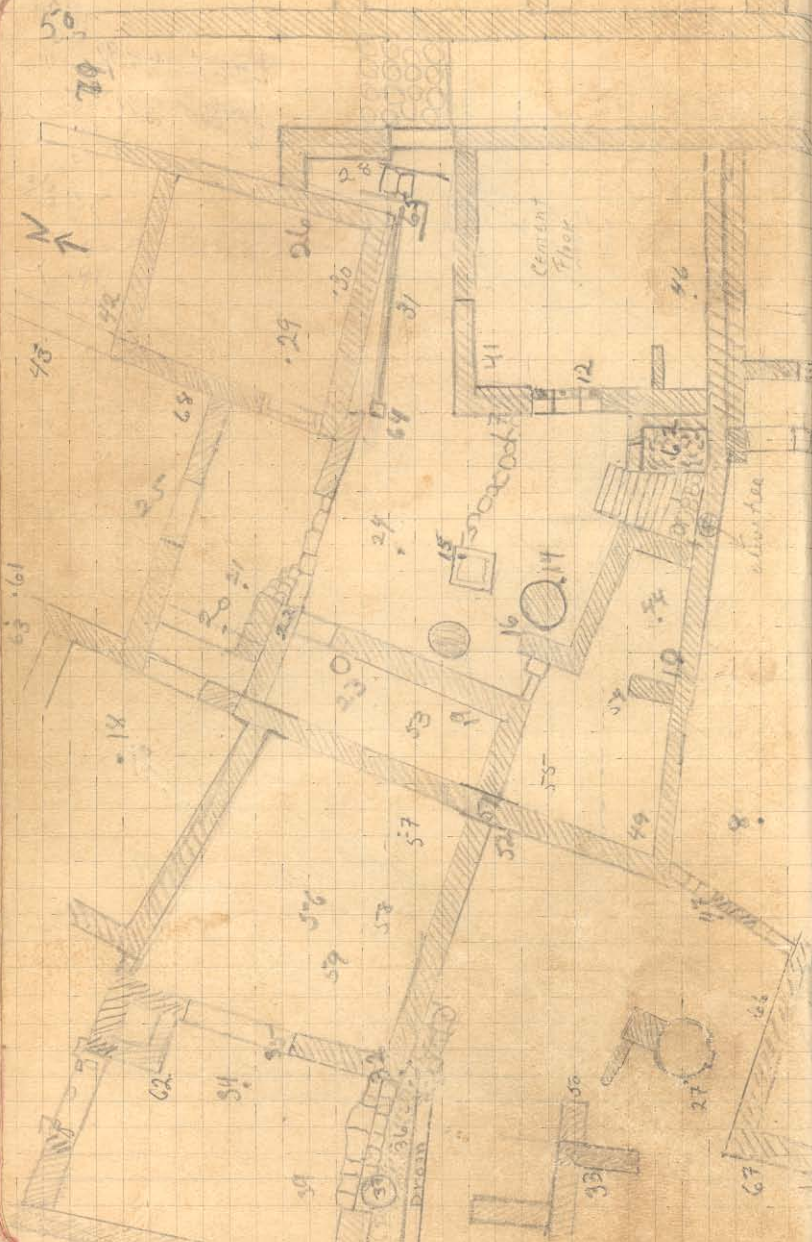
At pt 10 pgs 48-49 a bronze coin
was found at depth on level with
wall preserved at point 4. Coin
8
350-300 (?)

At point 1, pg 50-51 at
same depth with coin 8 were
also found 2 bronze needles (?)
(fragments)

75 cm S. of stake at 3, pg 50-51 was
found a lead gridiron. Depth 20 cm
below ground level at stake.

- 16
- 19
- 20
- 21
- 22
- 23
- 24
- 25
- 26
- 27
- 28
- 29
- 30
- 31
- 32
- 33
- 34
- 35
- 36
- 37
- 38
- 39
- 40
- 41
- 42
- 43
- 45
- 46
- 47





Along the line of wall from 2 to 11
pages 48-49.

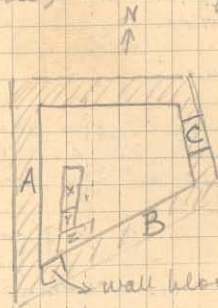
We found a stucco face toward the north - apparently applied directly to the stone and averaging 1 cm. thick. The body of the plaster was white, with a red face. This plaster was lost down the face of the wall for 60 cm. approx. except at the projecting in the corner of the wall (12 on plan) where the plaster and coloring are best preserved. Beyond the projection 12, the wall seems to return to the north, as shown in plan, with a width of 40 cm.

In the section to the west of the paved st. just to the east of the stake marked 2 on the plan pg 50-51 a plaster floor appeared at a depth of 60 cm. below the level of gravel at stake and 35 cm. below the level of the highest part of the wall at point F.

Coin 10
28
A bronze coin was found south of stake at 3 pg 51, at depth of 70 cm. below level of earth at stake, or 75 cm. below level of corner of wall at F.

In the room about point 2, pg 51 there are three different periods evident. The period of the plaster floor mentioned above is the latest.

At a 20 cm. higher level, however, the workmen cut through a line of floor which is co-extensive with the room (2) as diagrammed below.



Stones x, y, and z, forming a wall as indicated on pg 51, are placed on the second floor level mentioned and consequently represent the third period. The upper level of floor plaster ceases on line of inside of wall A, although the wall itself has in some places been destroyed at the same level. The plaster starts also at the southern side of the room on a wall block which carries the line of wall B. On side C, the upper ledge of flooring starts the door sill, showing the door sill in the wall C contemporary with the upper level of flooring.

May 10 Wednesday.

In charge of sections to east and west of paved St. Trenches VI, VII, I and extensions.

18 Workmen.

A new trench was opened in the section of point 6 (pg. 51) to clear houses west of paved St.

At point 12, pg. 48, near the plastered wall a bronze coin was found at depth of 120 cm. below level of highest point of wall at 13.



Laurel
350-300 B.C.

Coin II

(16)

A vase almost entire was found at pt. 14, pg. 48, at a depth of 150 cm. below wall at pt. 13.

In digging down in room about 6 page 48, a paving of plaster appeared at a depth of 140 cm. below level of high point of corner at 9. The plaster appeared first at the point B, at which point on the floor was found fragments of a vase of coarse red ware.

At point 7, page 51, a coin was found practically on the surface.



4th C.

Coin 12

(3)

At point 16, pg. 48, a small vase entire except for side handles and part of lip was found at depth of 125 cm. below level of high point of wall at 13.

C. 41
Photo - No. 6. W. side - view of room about 6 (pg. 48) from corner of room at point 3.

In room about pt. 6, page 48, the tile fragments continued to be fairly frequent down to the plaster pavement mentioned in page 57. The plaster did not cover the whole room but toward the north had fallen away. Its position is roughly represented by the shading in the plan, pg. 48. Where the plaster is broken away to the north there is immediately under the floor a pile of small stones, and tile fragments mixed with earth. The plaster appears to end to the west against a line of stone wall, and on the east it ends with a beautifully finished edge, - with no wall, however. See pg. 62.

The wall from 13 to 11, pg. 48, developed a return, as shown on diagram at pt. 11, toward the south. The curved part is a later addition and does not bind into the section to the west. The old plaster also ends at the line of break in the wall - and seems to have returned with its wall to the south.

At a point 1 meter north of
point 2 (see plan page 46)
a case of black painted ware and
a case of red ware were
turned up almost entire.

May 11 Thursday

In charge of sections about paved
street. 18 workmen.

Between the walls at 11 and 9
pg 48, a large number of loose
stones were found, with some
few tile fragments intermingled.
Depth 20 cm to 1 meter below
high point of wall at 9.

At point 14, pg. 48, a bronze coin 13
said was found, 2 cm. above
stereo. 27
400-350 p.c.

At point 8, pg. 50, a bronze
coin was found, depth 50 cm. 20 coin 14

At upper end of paved st,
100 cm south of edge of
pavement, at pt 9, pg 51
a number of coins were found; Group
in the strata 20 cm. above
stereo. 15
434-450

The tiles and pottery fragments
collected from the patients' orders
above the paved st are as
follows.

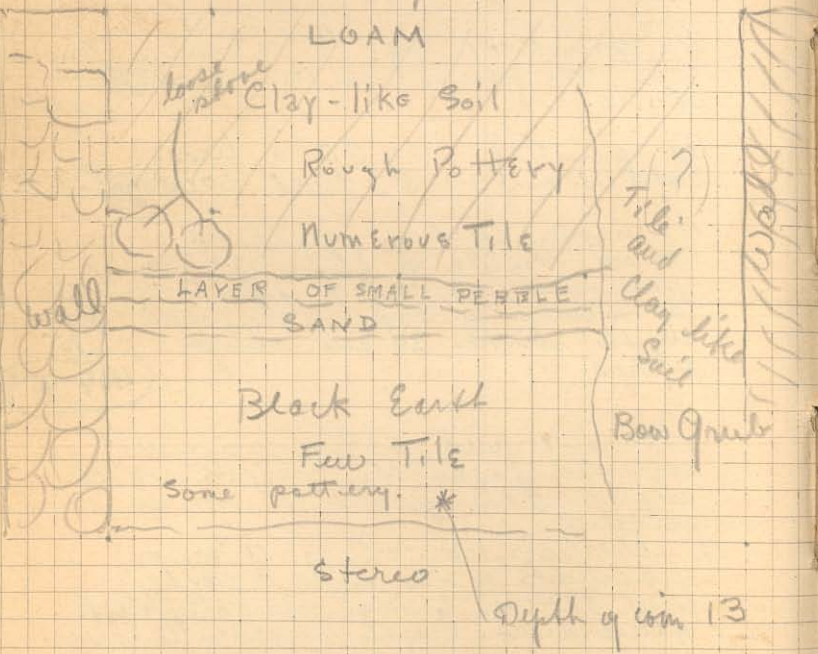
About pts 1-2-3-4-5, pg 51, ca. 30
fragments of tile and rough
red pottery, several shreds of black
glaze ware. Depth surface to stereo.

About pts 14-10-2-12-11, pg 49 -
(a) About 24 few tile fragments
only a few rough red pottery fragments.
(b) About 2-12-11, the tile, small
stone, and rough pottery continued
down to stereo.

In the room about 14, pg 48. The floor level appeared in the stratification of the face of bank to south of room.

The following is a south elevation of the bank, showing stratification, along the line indicated by the dotting in ink, pg. 48.

Scale 1 square = 10 cm.



It seems that the floor must have been along the layer of pebbles. The tile fragments were above and very close to this layer and the full of loose stone lay just above this level.

A bronze coin was found at pt. 10, pg 50, at a depth of 40 cm. Coin No 16 (25) 350-300 BC

~~CH 2~~ Photo No 1 on Roll
View of 3-4-1-2-9, pg 51 from West.

~~CH 3~~ Photo No 2 on Roll
View by end of paved at about pt 9, pg 51, from North

~~CH 4~~ Photo No 3 on Roll
View of 14-10-2-12-11 pg 48 from pt 4.

A bronze coin was found at point 7, practically on the surface. Point 7, pg. 48. Coin 17 (135) 400-350

A drain pipe appeared in section 1 north by 14 and 12 pg. 48 as shown in diagram top is laid in a trench cut in stereo.

A bronze coin was found at pt 8 pg 50, depth 30 cm. Coin 18 (221)

At point 11, page 48, where
the wall returns at rt. L₃.
to the south the rough coating
of plaster continued in antiquity
to cross the break. A fine
coat of red plaster made the
face of this wall. (See samples)

The plaster stopped at the
bottom of the wall, in a curved
line roughly following stereo.

May 12 Friday

In charge of sections by the
paved street

15 Workmen.

From the strip 4 meters wide
running E and W between
points 4 and 6, eg 51
the shards of pottery collected
to a depth 0-50 consisted
of several fragments of ware
that were some stamped
ware shards (black painted),
and some poor black painted
ware.

A bronze coin was found at
a point 2 meters east of
olive tree page 50, 10 cm
below surface

Coin
19

(112)

Photos of and 5 - to Miss
Eldridge.

400-35000

62 May 13 Saturday

In charge of current section
14 Workmen.

Work began at two points,
about the olive tree (pg. 3-5)
and in front of lobby entry,
pt. 49.

To the south of the wall 13-11
page 48, we cleared away the
earth and found part of a
house on the upper level. Walls
were found as indicated on the
plan. To the west walls were
found continuing the line of
walls on sides of paved street
to the north (see plan pg. 48).

Coin 1 A coin was found at pt 11, pg 51
20 depth 140 cm below level of
wall at 6.

453



In the room about 8 pg. 48 there
appeared walls carrying the line of
the edge of plaster found at the
lower level in room about 6.
See plan.

In the room about 6 we cleaned
away the segment to the west of
the plaster area and laid bare
the section of pavement there
preserved. It is drawn in on the
plan page 48 as preserved.

Exactly at point 16, page 48
(lower right hand corner) part
of the plaster of the wall is
preserved - melting the plaster
by the floor - which lies at a
depth of 19 cm below the inner
edge of the wall preserved at
this point.

63

A bronze coin was found at
depth of 30 cm at pt. 12 pg 50

Coin 21
111
450

Photo No 6 on Roll.

Across west ^{South?} end of Stoa to
points 11, 13, page 48. Another
exposed on a preserved
section of flooring in the stoa.

C 47

Photo No 1 on Roll.
View of section about
the olive tree, toward the
west.

C 54



64 May 15 Monday.

In charge a section about paved street east west end of stoa.

16 workmen.

A bronze coin was found at pt. 17, pg 49. at a depth of 15 cm.

Coin

21

32

4th c.



A fine vase was found at pt. 18, pg 48, depth 25 cm.



Photo No 2 on Roll to Miss Goldman.

The work continued along front of stoa, and stoa on pgs 60-61. Laying bare the front wall, and about Trench VIII, the central aisle of stoa was excavated.

About the olive tree, west of paved area, there were no finds but we continued to remove the dirt.

May 16 Tuesday

65

In charge a section about paved street east west end of stoa.

16 workmen.

A bronze coin was found, wild Coin

474

A bronze coin was found at pt 13, pg 50-51, depth 150 cm.

Coin 23

755



A bronze coin was found at pt 14 pg 50 at depth 30 cm. below level of wall preserved at 17.

Coin 24



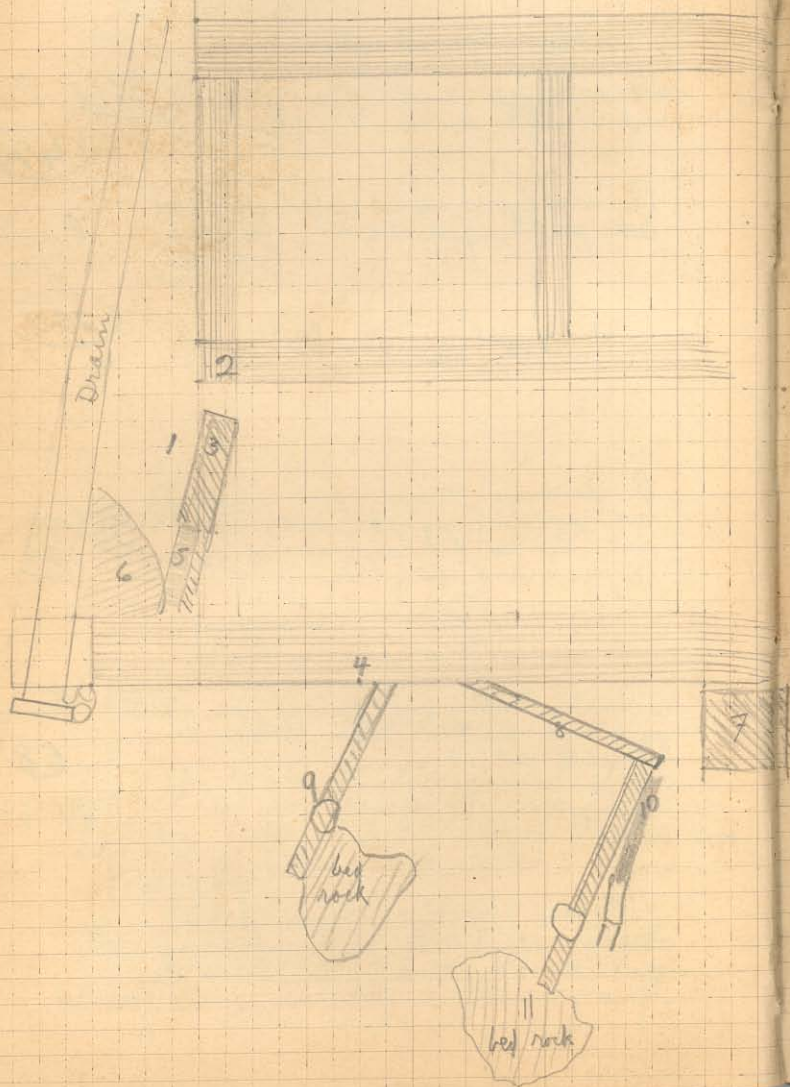
A bronze coin was found at pt 15 pg 50 at depth 30 cm. below level of wall at 17.

Coin 25 58



400-350

About the olive tree, down to a depth level with the wall pg 50 point 17, very few tiles or fragments of pottery were found.



Those discovered were:

50 fragments of roof tiles
 50 of swept red pottery
 one or two shards of red shrapnel ware
 one or two shards with some black
 paint

Coin
 26
 A bronze coin was found at pt. 1
 pg 69. Depth 30 cm. below top
 of wall at that point



369

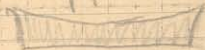
C 50 / → Photo no. 3 on wall to the Golden

C 51 / → Photo no. 4. Trench north of
 olive tree, as seen from the
 west.

The pottery from section to North of
 Olive tree, pg 50. for depth of
 0-50 cm. below level of wall at
 17 was as follows:

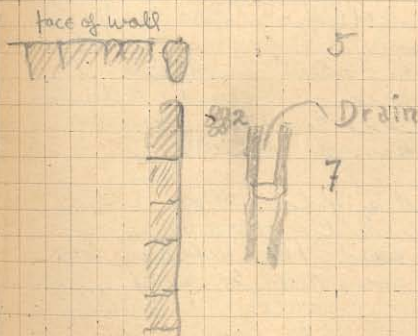
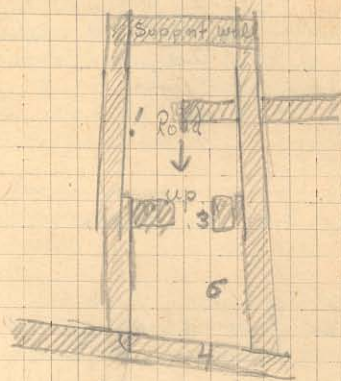
- (1) Swept large rough red
 ware jars - in fragments
 - (2) One or two bowls and vases
 with green, black paint (then in shapes)
 and brown paint.
- The number of roof tiles increased
 greatly toward the depth of 50 cm.

A small bronze implement was found
 at point 19 pg 48. depth 100 cm.



Scale 1 block = 50 cm.

Continuation of Paved St. to South
 beyond section shown on pages
 48-51.



May 17, Wednesday.

18 workmen.

In charge of sections about paved street and upper end of slope.

At point 20, pg 48, a stone was found with an inscription of 2 letters

E
M

about 25 cm. below the surface.

Coin
27
A coin was found at pt 12, pg 50, depth of 60 cm below level of wall at 17.

464
C 58

Photo no 5 on roll to Miss Goldman
To the north of the stone tree we opened part of area of trench extending north from an east-west line through pt. 15-agg.

In the west end of the plaza we cleared off the walls from pts 8-20, pg 48-49, and the return to the north. In the corner at 21 was a small amount of buried material and in back rooms the paved floor appeared at the same level as in the room about 6, pg 48. The burnt material at 21 was directly on the floor.

Behind the wall 8-21 stone was encountered at about the level of the floor inside.

We continued the excavation in search of the upper end of the paved st.

About pt. 2 (see pg. 69) there appeared a number of cobble-stones which may have formed part of the pavement of the earlier street. Several large stones (which may have been part of a supporting wall of the street ramp developed at pt. 3, pg 69, and at pt 4, a cross wall appeared.

A large terra cotta figurine was found at pt. 12, pg 50 directly on the pavement.

The pottery from 50 cm - to 100 cm in sections about pts 12 and 15 pg 50 consisted of:

1. rough pots also like
2. spade shaped flat terra cotta receptacles
3. a lamp.
4. small painted bowls and plates

At pt 22 pg 49, a chicken plaque 113x113 mm was found on the floor paving, with squares of green on one side and yellow on the other. Each square is 37 mm x 37 mm.

72 May 18 Thursday

In charge of sections about paved street and west end of stoa.

17 workmen.

Coin 28 A bronze coin was found at pt 23, pg 49, depth of 90 cm.

(386)

Coin 29 A bronze coin was found at pt 5, pg 69, depth 10 cm below surface.

(60)

350-300 In the section north of the stoa line several walls developed in the course of the morning. They are shown on the plan pg. 50.

At point 1, pg 66 a fine terra cotta head was found, depth 40 cm. below level of room at 2.

At point 18, page 50 half a terra cotta disk was found (used as a die).

Coin 30 A bronze coin was found north of stoa line, depth 0-50 exact spot unknown.

(61)

Coin 31 A bronze coin was found at pt. 5 pg 69, depth 15 cm below surface.

(385)

73

A beautiful terra cotta figurine was also found at point 3 pg 66, depth 30 cm below room at 2.

This terra cotta as well as one mentioned on preceding page were in the field under the floor of the stoa.

At pt. 19, pg 50 fragments of 2 terracotta were found (Bag 5), depth of 30 cm below top of wall.

Several vases of various sorts were also found in the same room. Bag 6. The large black vase was found at the same level just at pt 18, with the die plaque.

(45)

A bronze coin was found at pt 28 pg 50 depth 40 cm. below wall at that point.

Coin 32

A couple of bases were found in section about pt 6, pg 69, small and rough ware. (Sent to house with reference) Bag 7.

74 May 19 Friday.

In charge of sections about paved street and west end of stoa.

Coin A bronze coin was found at pt 21 pg 50 depth 60 cm below wall at 22. (109)

Coins Two bronze coins were found at pt 23, pg 50 depth 40 cm below wall at 19. (51, 52)

350-300

The urban area paved to north of the olive tree had a heavy layer of roof-tiles from a depth of 40-75 cm. Below the wall at pt 17. These roof tiles were intermingled with fragments of large pottery, jars, and pieces of small jibbi, terra-cotta tiles covers of terra-cotta and of stone (blue-shale)

C59 / Photo No 6 on roll
View across pt 11 to pt 13 pg 51 showing rubble.

C60 / Photo No 1 on roll.
View across 24, 29, 18, pg 50 from east.

C60 / Photo no 2 on roll.
View across 19 and 20 on plan page 48 from west.

75

A bronze coin was found at pt 24 pg 50 depth level with square at 15. Coin 35 (424) 300-

A bronze coin was found at pt 15 pg 50 10 cm below square at this point. Coin 36 (110)

A vase entire except for mouth and handles was found at pt 15 pg 50 at depth of 95 cm. 295-281?

Between pts 5-19-20 pg 48 we dug down 110 cm below the wall at 4. From 80 to 110 there were quantities of roof tile. In the corner pt 20 as shown on the plan we came across a piece of pavement corresponding to that in the large room about 6. In its corner at 24 were found (depth 50 cm, below wall at that point) a large jar (in fragments) and a yellow cooking apparatus shaped like a cone, with a pierced top and a triangular opening in the side.

A terra-cotta plaque featuring a lion standing in a doorway was found at pt 3, pg 66, depth 40 cm.

at the upper end of paved street pg 69, pt 17, a slab drain appeared as shown in diagram. The large terrace wall also returned well to the south - as shown.

76

A bronze coin was found at
 pt. 25 pg. 49, on the pavement
 by the stream at that point.

(32)

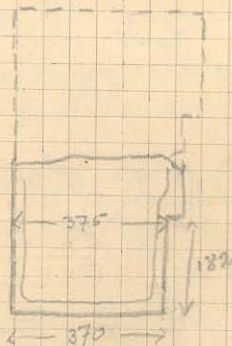
P.C.

At pt 26 pg. 49, there appeared
 in the house of older period as shown
 by the plan, two jars in much
 damaged condition.

In digging down to the east of
 the large drain, about corner 2 of
 pg. 66, we came upon another
 wall, running at an angle toward
 the north; depth 50 cm. below 2.
 The wall is shown in the plan by
 cross shading.

On pt 27, pg. 48, a tile fragment
 with several letters on it was found
 apparently, (ABT)
 (11-). Depth 50 cm.

Fragment of
 mosaic
 epistyle
 found at
 pt 25, pg. 50.



According to
 the plan and
 a den jar.

May 20, Saturday

77

14 Workmen

In charge of workers by the paved
 at end west end of stoa.

A bronze coin was found at pt. 26
 page 50, depth 20 cm. above
 wall at 17.

(38)

At pt 26, pg. 50, we continued
 to clear away the earth walls
 appeared as shown in the
 diagram. 400-350

The face of the terracotta wall
 also appeared near pt 6
 pg 51.

May 22 Monday

In charge of central section of
Platonic Terrace.

12 Workmen.

Coin 2 bronze coins were found at
pt 27, pg 50 at depth of
wall top directly west of that
point.

133

134

400-350 An arrow head of bronze
was found at pt 28
pg 50, depth 70 cm!

Coin A bronze coin was found at
pt 29, pg 50, depth level with
threshold at this place.

142

400- Coin A bronze coin was found at
pt 30, pg 50, at depth of 90 cm,
below wall at corner.

144

about points 29 and 30 pg 50, we
dug down till a layer of light
soil began to appear 20 cm
below the threshold at 29. Some
loose material was excavated
immediately above this level.

The passageway about 31 was
also carried down to approximately
the same level.

Several vases and bits of finer
ware were mingled with the
coarse pots and tiles in both
the sections mentioned above.
(Taken to House)

In the square at 15 pg 50,
there were a number of rough
stones forming a pavement
at a depth of 5-10 cm
below the stone. The earth
in the square was very red,
and there were numerous
traces of charcoal.

80 May 23 Tuesday.

No change of vertical section of terrace.

12 Workmen.

Coin of bronze coin was found at pt 42 pg. 50 depth level with earthen floor of wall at pt?

195 Photo No 3 on Roll - view across pts 28, 31, 29 from room of the large Pit on pg 48 from east.

Photo No 4 on Roll to Scott. Photos nos 5 and 6 Mass Elderly.

By point 7 page 51 we cleared away more of the face of the terrace wall and disclosed a flight of stairs, as shown on the diagram. Directly opposite the stairs there is a fringe in the terrace wall, and the stones is the last are much smaller.

C 93 Photo No 1 on roll Terrace no 3 from Rocks at Terrace 2 above.

C 94 Photo No 2 on roll Occupies of Colophon from SSW.

Coin Bronze Coin: pt 34 pg 50 depth 30 cm below well at pt 35 Found with ~~also~~ turned metal, all main shells. Also one terra cotta head.

121

The walls about pts. 32, 34, 35, 1950 appeared in the course of the afternoon. See plan.

Photo No 3 on Roll - Stairs and threshold by 6 + 7 pg. 51 from west. C 95

Photo No 4 to Scott. A bronze coin was found in section of pg 33 wild 452 44

Bronze Coin found at pt 36 pg 58 depth 30 cm below earthen at 33 141 45

After 300

May 24 Wednesday

In charge of central section of terrace,
11 workmen.

Digging continued at the lower end of the paved street. The cornering walls ran down as indicated on the plan pg 50. Continuing the slope of the later pavement of the street, there was a layer of hard packed soil mixed with bluish stone, indicating the street level.

At pt. 32, pg 50 a column drum, diameter 40 cm, height 46 cm, round, was found, at about the level of pt 32. See plan.

Coin a bronze coin found at pt 34
46 pg 50, depth level with
door jamb at pt 35.

(243)

In the rooms about pts. 34-36, pg 50 as far south as point 27, and down to the level of the wall at pt 32, practically the only pottery fragments or tiles found are those mentioned on page 80. Immediately south of wall from pt. 32 east, however, the tile formed a continuous fill from 20 cm above level of pt 32 to 20 cm below level of that point.

Coin
47

(388)

Bronze coin found at pt. 38, pg 50
depth. 125 cm below wall top at
this point.

May 25 Thursday

In charge of central section
of terrace
11 workmen.

At point 39, pg 50 on level of threshold but the column, a large pot, entire but in fragments was excavated - also a little lamp, with raised pattern on top (sent to house); and a small vase.

In corner of the room at pt 39, pg 49 a small pot was found directly on the paving of floor in a bed of charcoal.

Photo No 5 on Roll. Covered
draw in front of area from the
East.

C 97
←

Considerable fairly large stone
wall removed from the last
wall of Room S (p 32). Roof tile
below it.

Handle of Iron Strigil from
Room BB, c 70 below ground, pt 7
pg 32.

84 May 26 - Friday

Same quantity of plaster fall from south wall in S. Wing of 1st floor (Point 16, p 48). Fall after wall had disappeared. Plaster has ground coat made of sand (coarse) and limes plaster and lime-pinks in color about 2 1/2 - 3 cm thick, second slightly with shallow depressions on surface. Second coat white sand and lime about 5 milimeter thick, traces of red on surface. Final coat also coarse sand and white plaster about 2 cm thick, smooth white face.

In room BB (p 32) quantity of broken roof tiles about 100 below painted surface (7 ft from below top of wall)

Coin 48 Room AA p 32 small Bronze coin
Depth c 75 below top of wall Point 1 - (376) 350

Broken tile in AA (p 32) of same level as in BB, beneath wall from Small

Coin 49 Bronze coin Room AA p 32 Point 2 (471)
Depth c 75 below top of wall

Coin 50 Bronze coin Room BB p 32 Depth c 100 below grade Point 3 (380)

Coin 51 Bronze coin Room CC p 32 Depth c 5 cm below top of wall Point 4 (224)

Coin 52 Bronze coin Room DD p 32 Depth c 10 cm below top of wall Point 5 (383)

85 May 27 Saturday -
At p 28 p 49 a bronze coin was found to N.E. of drain 30 cm away at a depth of 20 cm. below top surface. It was found in the best earth fill around the drain. Coin 53 (387)

May 29 Monday

In charge of central section of
37th terrace.

10 Workmen.

Photos 1-4 Personal

C⁹⁹ Photo no 5 in roll - Room AA pg 32
7 from NE cornerC¹⁰⁰ Photos no 6 and 7 to Miss EldridgeC¹⁰² Photo no 8, view from pt 8 across
= 36 and 34, pg 50.C¹⁰³ Photo no 9, view of column at
7 37 from corner by 33, pg 50.Between pts. 22 and 23, pg 50 a
terra cotta representation of a warrior
falling, an Amazon or a horse
was found at depth of 50 cm.
below corner of wall at 22.C³⁷⁸ A bronze coin was found in
section EE, pg 82, depth
level with top of walls. pt 6

May 30 Tuesday

In charge of central section of
37th terrace

10 workmen

At pt. 8, pg 32, the head of a lozenge
terra cotta was found, in the layer
of broken pottery and small stones
which probably was used as fill
under the floor. Depth 30 cm.
below top of wall at pt. 8.At point 70, pg 51, a terra cotta
of clayey figure (entire) was
found at depth of 35 cm.
below wall immediately south.In rooms AA, B, C, D, fragments of
pottery were found from depth
0-70 below wall tops in
moderate quantities. Samples
taken to be kept.Several fragments of pottery
with unglazed lines were
found on the paved floor at
point 41, pg 50. taken to
be kept.At pt. 29, pg 49, there are two
walls immediately to the north
which cross at a slight angle.
The S.W. - N.E. one of the two is
the older and is \perp to wall
29 and all to wall 30. Wall
29 continues also to the
north of the cross wall. The
other walls are later but
earlier than the stoa.

May 31, Wednesday

In charge of central section of 3rd floor

14 Workmen

C 104

7 Photos 10 and 1 to Miss
Eldridge

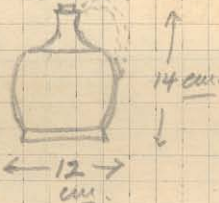
C 109 ✓

In cleaning the wigwag ducts north of the
olive tree a stairway appeared as
shown on the plan, pg. 50.

C 110

Photo No 2 - of Stairway by the
olive tree from North-West.At pt 14, pg 50 parts of a
terra-cotta figurine were found
at depth of 135 cm below
corner of wall at pt 16. Several
bone fragments were also
found at the same point.

June 1, Thursday

In charge of central section
& workmen.Above the olive tree the wall
developed from 10 around to
16 as shown in the diagram
pg. 50. In the enclosed area
we dug down finding only
fragments of loam pots and
wooden tiles mingled with the
soil to a depth of 120 cm.
below top of stairway.Toward the north end of paved
street area we opened the trench
out to the north. Walls developed
as shown about points 42 and
43, pg 50. At pt 42 a wall was
found at depth of 25 cm. below
top of wall.At point 43 pieces of a large
terra-cotta plaque were
found, at depth level with top
of wall at that point.A bronze coin was found at pt Coin
42, pg 50, depth 30 cm. below
wall at that point. (377) 55-A small saucer was found at
pt 44, pg 50, depth of 80 cm.
below wall at that point
(between houses).

June 2, Friday

In charge of earliest section of terrace
8 men

C^{III} ✓ Photo no. 3 on wall view of
station about point 42, pg 51
from N.E. corner of the room by
Eldridge Street.

Photo no 4 to him Eldridge

C^{IV} ✓ Photo no 5 Across wall to 42
point 45 pg 51

C^{III} ✓ Photo no 6. Stairway beyond
pt 14, pg 50 from point 21.

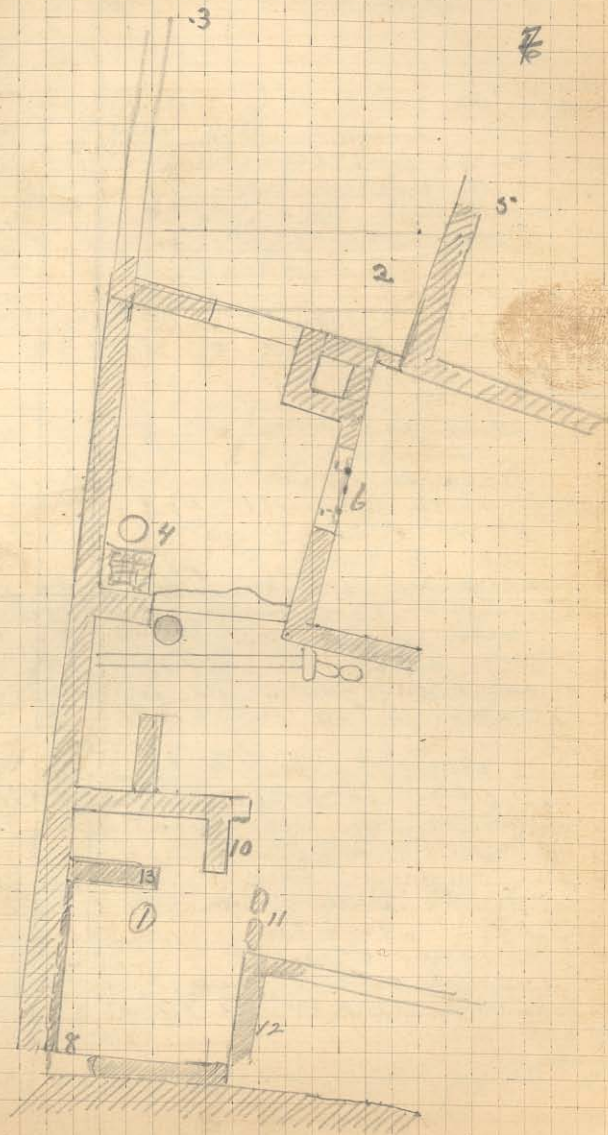
We opened the trenches farther to the
north on the north end of the street
pg 50, 42.

Also we dug down in room 1,
pg 91. There was a great deal of
loose rubble on the open side of the
room and pieces of loose tile and
pots were found down to level of
80 cm. below the north east
corner.

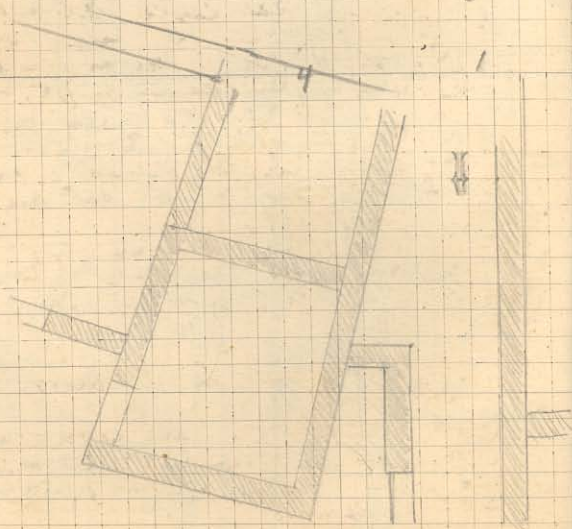
About pt 6, pg 57. The dotted
area represents a ramp that appeared
leading up to the platform and
the stairs.

The lower end of ramp is
app. 25 cm. lower than the threshold
at pt 45 and at this level over
the intervening area there were
very many roof tiles.

Western side of Page 50-51
Scale 1 block = 30 cm



North End of Street pg. 50
Scan 1 block = 50 cm.



June 3, Saturday

In charge of central section of 3rd terrace
& workmen.

At the north end of the street the drain
appeared again with above of the
early pavement removed for its
inspection. The last section of
tile has a socket with lime cement
showing that the drain continued
further - See pg. 92.

A bronze coin was found at
pt. 4 pg. 66 on top of wall at that
point.

Coin
56

423

In cleaning in front of the shop
the foundations for a stables
base appeared as shown at pt. 7
pg. 66. It is of small rubble construction,
walls developed also near the
drain, the wall 5 being on top
of 3, and the smaller foundation
of 6 above the level of 5, even
with the lower course of shop
wall foundations. The drain ends
immediately in front of the shop
with a flat slab set on edge.

At pt. 8, pg. 66 a wall appeared
rising at an angle to the
shop wall, and of an earlier
period. The shop wall overlapped it.

Photos 1 and 2 to Miss Eldridge.

At pt. 46 pg. 50 a terra cotta bull's head
and a small fragment with a human
head were found on the paved floor.
(Taken to house).

Photo no 3. from pt. 2 to pt. 1. pg. 92

C 117
✓

94 June 5 - Monday

In charge of central section 93rd where

9 Workmen.

In cleaning the room shown on pg. 31, walls developed as shown by M and N in the diagram.

The whole room, as part of the stoa has its walls well built of unworked one and two man stones. The west wall on the outside is the outer wall of the stoa and so built of the large blocks of that structure (as shown on plan). Along the inner face of this wall at a depth of 45 cm below the permanent mark on the wall (which is itself 289 cm below the base point at the bema) runs a built up ledge of one man stones. The floor level of the stoa was above any of the preserved walls.

In the room at the corner, pavement shown by Q in diagram. At 3 corners of it are built stone pillars resting on a layer of earth 2 cm thick on top of the pavement.

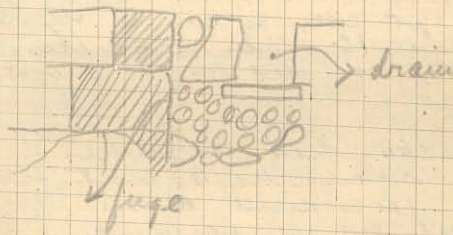
The system of walls MOR, has an apparent floor level by the large stone 10, where the drain is set away on one side for the reception of another ledge. The same level appears at point 3 as a strata of fine chips of stone and lime very hard packed. It also shows in the

stratification on the side of the trench at B see a whitish sandy layer with small particles of stone intermingled. It is 20 cm below the debris paving above.

The wall N runs under the wall by the drain, where only one layer of stones of the upper wall is preserved. These walls are all built by one man stones.

The south wall of the whole room has large stones on the outside and makes a thorough face at the corner 5, where the father wall of the whole stoa makes a corner for three courses down (we dig no further)

East elevation of corner no. 5



Along the front of the stoa, the wall to the south end, so preserved in the *epithuria* corinth one course higher than the rest of the wall preserved. See pg 48-49

Exactly at the south front corner, pt. 31, plaster is preserved on the south wall down to a height of 28 cm above the *epithuria*. Also at point 32, several *opus incertum* preserved approx. north to the same height, showing that the floor level at one period must have been app. at that level. The floor level mentioned at pt 16. is 20 cm. higher.

Under the floor in the stoa were preserved the remains of certain house drains in the plan pg 49. At pt 21, the wall is 50 cm above floor, at pt 25, 20 cm above floor and at pt 18 even with floor.

They are 6, one and two man drains. The drain which appears at pt 28, pg 49, ends as shown on the plan and continues with a much smaller drain that fits into it. The smaller drain was broken out by the building of the front wall of the stoa.

At the north end of the paved street area (see pg 42), we continued to dig in loose earth filled with small stones. Rough pottery in considerable quantity appeared at depth of 200 cm, below the level of level of drain (pg 42) at point 3.

At point 47, pg 50, a wall began to appear which ran as shown in diagram. The stacked blocks in the center are of poros.

On level with top of this wall and about pt. 8, some fragments of tile in small quantity in the soil.

At pt. 48, pg 50 a bronze arrow head was found at depth of 50 cm, below corner of wall at pt 49.

In front of stoa the walls developed as shown at points 8 and 9 pg. 66. They are of the main stones preserved to a height level with stables base at 7. A pt 10 a drain also appeared as shown in plan, level with wall.

In clearing the walls of drain and stoa about pt 32 pg 49 it appeared that the central wall of the stoa was built over the wall of the drain. The drain is older than the south end of the stoa.

The faces of the drain are built of large blocks (as shown in plan, pg 19) and these are worked with the main stones.

In the room about pt. 23, pg 49. The inferior foundations go down only ca. 75 cm. below their tops. At this depth the central wall of the aboa at pt. 23 begins to go down about 10 cm. thicker than it is represented on the plan.

The walls are all built of unworked one and two man stones.

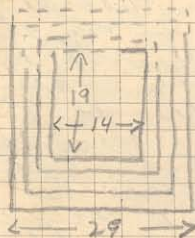
In the room about pt. 6, pg 48 the east wall is preserved at the southern end above the level of the floor at pt. 31, pg 49. by about 60 cm. but there is no trace of a door or floor level. The walls are built of one and two man stones - with the large blocks on the outside of the aboa.

By pt. 29, pg 50 a well developed door shown on plan. It is built round, faced with stones of one or two man size. The threshold of the well and the upper circuit of stones are level with the end of the wall preserved at pt. 56, pg 50. This point is 70 cm. below the corner at pt. 33.

At pt. 33, pg 50 the fence runs as shown in the diagram. The North-South wall in its upper two courses overlaps the East-West wall against which it abuts in the lower courses, but the irregular face at corner 33 seems to show the two walls contemporary.

On the southern side of the well is a porous block forming part of the upper row of

stones with a cutting for a beam and a moulding around the cutting. The south elevation is



In the section about the drain, pg 48. There is considerable evidence as to relative date of house and roadway.

The walls running through points 11, 13, 10, 19, 20, 15 etc. enclosed an area in the house system in which the houses had paved floors under the aboa also formed a part. This house system was destroyed by the building of the aboa, and the roadway from the paved street near pt. 4 (with the drain) went just through to the front of the aboa.

The plaster along the wall from 13 to 11 is preserved from the level of the ramp support at pt. 34 down as though to indicate that it had been protected after the destruction by the house by a fall of dirt which came up to that level. The plaster also runs across the fence at corner 11, see pg 60 - showing that plaster was on

The wall of a room destroyed need not be the outside wall of the terrace above - which is contemporary with the sloa. For the outside wall of his house he came alone used the wall with the plaster but remade the corner, which does not carry all the way to the bottom. The rounded embankment he added as a podium before his door-step and the ramp supports in front show the level of the roadway, which ran to the corner of the sloa and descended in two full steps to the plaxia. The masonry work is also cut near pt. 36 for the roadway.

Further indications of the level of soil before this area after the destruction of the house system are given by the condition of wall 10-35. It drops abruptly at pt 35 to the level mentioned above for the top of the plaster. The rest of it, beneath this level is preserved, except where it was cut to allow the passage of the drain.

The drain also destroyed the early pavement of the street from 4 north and the better paving stone were probably put in when it was laid. It runs, abruptly, also at point 34, going just east of the foundations of the old wall and up under the podium - showing it to be of later date.

At the level of wall preserved at pt 35 a series of sand and pebbles continues across toward the west carrying the level of the street. This wall from 4 to corner of sloa at 3 is built over destroyed wall 19-10 and probably was a readjustment of the house system that could be saved to the building of the sloa.

We have then roughly a small plaxia from pts 4-3-9-11-35-37 facing on the street north past 4 and opening by a narrow passage by 34 onto the plaxia by the sloa. The level of the small plaxia was app. 60 cm. below the threshold of the house above the plastered wall. It slopes down toward the street by 4. Wall 13-11 is of 2 man stones brought at the corner. The other walls, except the sloa wall, in this section, are of one man stone.

June 6 Tuesday

In charge of central section of
terrace - 4 workmen.

Work continued in the section
between points 19 and 49 pg 50.

To the east of well 47 at pt 27, pg 50
the threshold at 47 is on a level
about 75 cm. higher, sloping up
slightly to the north, where it is
about 35 cm. higher. The threshold
on the western side is fixed to a
line and the level was here
about 20 cm. below the top of it.

On the east the stones are rough
and the top of the threshold represents
the level that slopes up to the
large threshold at pt 45. The
floor is roughly marked by a
layer of black soil which
appears all over the northwestern
part of area to east of threshold.

The area is a first level and
then slopes rather steeply up.
The rubble of tiles marks the
floor immediately by pt 45.

From the south end of threshold
47, however, a raised ramp
leads with a uniform grade
up to the door at pt 6 and to
the street. The ramp is faced
with stones (2 man) from pt 45
east to pt 11, with a "filling" of
sere. Past 11 there is a flat
pavement and at 6 a step
platform (20 cm rise) leads
to the doorway.

The pavement at 11-6 is
level with threshold 45 and
the floor level came 1/2 way up the
2 man stone lining it.

The stairs by the ramp at 6 are
built of working blocks of
conglomerate stone, 40 x 25 x 30
ca. and the wall to the threshold
at 45 is faced with these stones
and limestone blocks of similar
size. The core and path are of
one-man unworked stones.
The wall at this section is
preserved 100 cm. above the
threshold at 45.

The threshold itself is of
five blocks of porous stone
as shown in the plan and
abuts at the north against a
flat square stone of poros.

When this block of poros the
wall returns to the east,
poorly preserved - as high as
level of porous block, it rough
one man stone considered to
be the wall of the room by the paved
street. The east wall of room 51 is
of one and two man stones. The
north wall abuts it at the
NE corner. The south wall of
room 51 is also of one and two
man stones with an occasional
dressed block. It is preserved
ca. 90 cm. above floor of room.

The west wall of room 51
in which was threshold for
door (across pt 40, pg 50) is
preserved about 15 cm. above
the threshold, again of one and
two man stones. The threshold
is of 2 blocks of poros as shown
below.



2 squares
= 25 cm.

The wall from north end of threshold 45 to pt 10, is preserved to a uniform height, 15 cm. below the porous block north of threshold. Level with the floor by the threshold, and over the floor slopes 75 cm above the floor at pt 10. From ~~here~~ to corner it is preserved 20 cm higher. It is of rubble and near stones but not uniformity of preservation of its top indicates a mud brick construction above. The corner at 49 is strengthened with slightly larger stones.

The wall from 49-52-32 is preserved 15 cm above the floor level in the enclosed room & uniformly. From 49 to 52 it is of cubelimestone - and from 52 to 32 it is built of heavy porous and limestone blocks in one or two regular sizes. It extends to north as far as point 35.

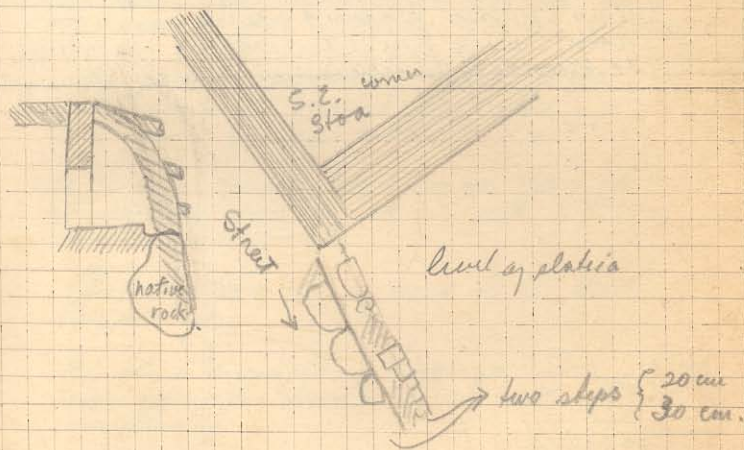
Com 57 A bronze coin was found at pt 53, pg 50, depth 60 cm. below top of wall above.

(80) At pt 54 pg 50 a large water pitcher was found 10 cm. above the floor - entire but in fragments - (sent to house).

In room 53, pg 50 a bronze cup-like implement was found - on floor pt 53.

At pt 19, pg 48 a bronze hat-pin head was found - depth 20 cm below top of wall.

The following is a diagram of the corner of stoa by S.E. and shows the native rock cut away for the street and the steps down to the plateau.



On pg. 66, the wall part 10 and 11 developed as the wall from 4 to 9 with a large flat stone 300 to 250 cm from N.W. end. It is presumably only level with the bed rock about pt 11, and is built of one end like near above. The drain continues east from pt 10 and becomes an open gutter as shown on plan with sections of U tile 75' x 25' x 15". This drain is level with the wall inside it.

In room about pts 54 and 55 several vases were found almost entire of characteristic shapes, (taken to house).

A small mudshen house was also found and an iron ring in the same room (taken to house).

June 7 Wednesday

11. Workmen

In charge of central section of 3rd terrace.

A bronze and iron spear head was found at pt 56, pg. 50 depth, even with threshold of room.

The well at pt 27, pg. 50 sided at a depth of 320 cm. with a large unburnt stone which ran under the wall construction of the well on three sides. The pottery from the well consisted of fragments of water-pitchers, and one or two small ware fragments of the varieties found in the trench itself (sent to house one complete pitcher and one vase, with white paint preserved).

At pt 57, pg. 50 a terra cotta fragment was found at depth of 35 cm below wall to east.

A bronze arrow head was found at pt 36, pg. 50 at depth of 5 cm below threshold.

Photos nos 6, 1, and 2 to Miss Eldridge.

At pt 58, pg. 50 a bronze coin was found depth level with threshold (92) 58

350-300

At pt 59, pg. 50 a bronze coin was found depth level with threshold (91) 59

350-300

C 116 ✓ Photo no 3. From top of terrace wall by point 38 pg 56 across points 11, 51, and 76.

C 117 ✓ Photo no 4. From south wall of room 1, pg 91, across the well.

In excavating between pts 1 and 6 pg 69, the pieces in the walls turned out to be as shown in the diagram.

C 118 ✓ Photo no 5. View across pts 1-3-6 pg 69 from pt 60, pg 51.

June 8 - Thursday

In charge of central section of 3rd terrace

A bronze coin was found under Caesars
A lead weight was found under (182)
350-39

At pt 2 pg 91, tiled with wall to south at terra cotta rooster was found.

At pt 3 pg 91, a leaf nail (vent) was found - depth level with wall at 2.

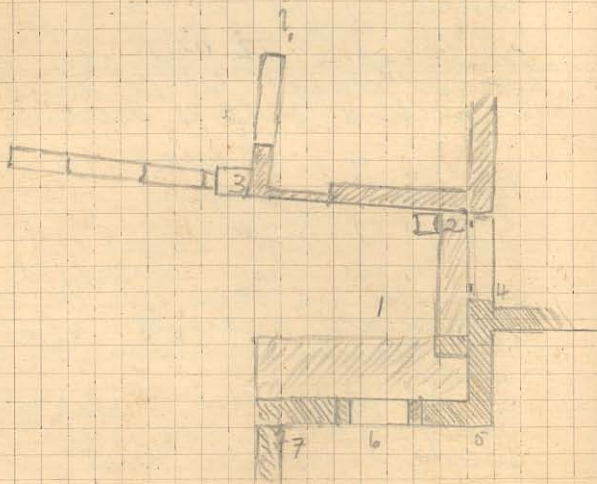
In house with columns - taken over from Scott June 7 - we cleared away in the court (1) pg 110 and found a wall running from 2 to 3. preserved in one course of poros blocks 60 cm long with a pitted surface dressing.

From 4 to 5 and to threshold to the wall is preserved 2 courses high and the stones at joints have bevelled edges.

On the large threshold block at 6 - the set lines for the door joints are preserved - showing the door to have been 90 cm wide.

The top poros courses of the wall from 6 to 7 had fallen forward into the court. See pg 110.

Scotts Trench Section.



A bronze coin was found Cambel
at pt. 61 pg. 50 level with
top of wall at that point. (184)

In cleaning from pts. 19 to 19, ²⁹⁴⁻³⁰
pg 48. An open drain appeared
as shown on the plan. This
drain was interrupted by the later
pipe drain from 4 to 39.

In cleaning the area between pts
36, 50, 52, pg 50 the drain was
found to end near pt 36 (as
shown), and about pt 36 and
beyond. The drain to the east
a plaster paving ran flush with
the top of drain as shown on the
dotted line on the map.

The whole court about
the well was roughly paved with
poor mortar and chips of stone
with a layer of rubble stone
between pts. 52 and 47.

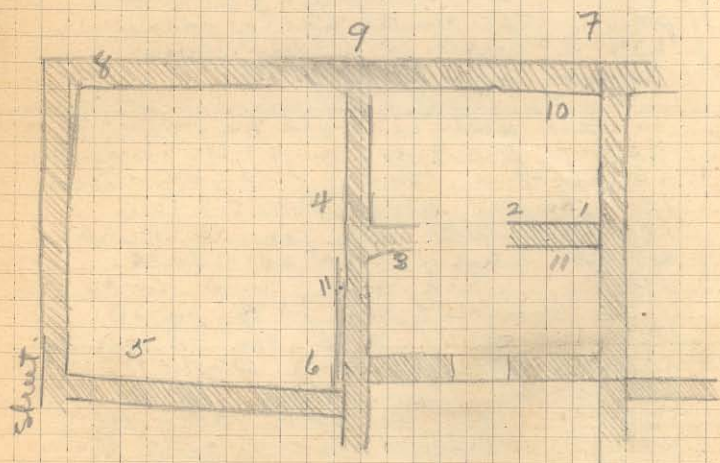
The blocks shown by pt 36
in line with the wall 52-32-39
and in front of (south) the irregular
threshold are about 3 cm above
the plaster and 17 cm below
the threshold. They form a kind
of first step for the threshold.

In room about pt 34, pg 50
the west wall is of one mean
rubble preserved to a height of
25-30 cm above floor. In pt
north wall the east joint of
door is preserved 30 cm and the
west joint 30 cm.

* North threshold of room is of one

* North threshold had a door - for
details see architect's plan.

Sector North from Miss Goldmann's Trench



Block of poros - 17 cm above floor.
The angle lug pt 62, pg 50, is also
of poros, to same height.
The east threshold of the room
is of 3 blocks of poros - 20 cm. above
floor.

The outside corner of the room
NE from 62 is of rubble (one man)
preserved to height of threshold.

The floor of the room appears as
a layer of yellow fine sandy
substance.

In room 51, pg 50 the threshold
is 30 cm. above floor. Wall to
north is preserved to level of
threshold, to east and south
50-55 cm above the floor. The
walls are of two man stones
except lower course of east
wall and SE corner where 2 man
poros blocks are used. The
joints are as shown in the plan.

In room 53 the walls are of one
and two man courses, preserved to
a height of 60-75 cm above floor.
The door jamb at 23 is a large
block 60 cm. high. The door jamb
at 22 is built up of heavy
blocks of limestone and poros.
Each block is 35 x 20 x 20.

In room 55 (walls described before)
walls are 120 cm high to south and
SW corner, 60 cm above floor and
west and ca. 50-55 cm north. The
threshold to north is of two limestone
blocks 15 cm above floor in room
55 and 25 cm. above floor in
room 46.

The short cross-wall at pt 54 pg 50 has two large stones, unburnt, for its foundation and a large joint - preserved 50 cm above floor - there is no threshold to the room 44. One of the walls are of large one man stones preserved ca. 100 cm in north and south, and ca. 120 - on east.

The whole room about pt 15 is divided in two roughly by the line of stones from pt 15 to pt 17. The floor about pt 24 is roughly paved with large stone and 15 cm lower than the floor about pt 14.

The threshold to North is of 5 blocks with no trace of hinges - or door - and 20 cm above floor about pt 24. The wall from the threshold east is preserved 55 cm above floor level, with an upright prop joint of 40 cm, backed by the usual one and two man stones, and then the whole covered with large flat blocks of poros.

The angle by pts. 19 and 41 pg 50 is built by one man stones, greatly strengthened at the corner by large blocks. One by pt 17, measures 75x25 - on the face. At the south end of the wall toward pt 12 2 halves of a mill hopper have been used to cope the other construction. The wall is preserved 82 cm above the floor by pt 14, 78 cm above its threshold at 12, and 89 cm above the cement floor in room 12.

The threshold at 12 is of poros in three blocks - see plan pg 50 - To the south of the threshold the wall runs south (35 cm high) one man stones and abuts the east west wall of the house. One stone projects from this wall into the room, breaking a small pocket which was full of rough pottery fragments.

62 pg 50 is a pier built of one and two man rocks, preserved to a height of 130 cm. It may have supported a column of the stairway.

The south wall of the room with the cement floor is a continuation of wall 9-10, but is much damaged (preserved 50 cm above floor to east sloping up to 100 cm at west). The north wall of room 51 seems built against it.

The east wall of the room with the paved floor has its lower part exposed and with false headers and shutters of poros 55x30 and 30x30. Above this the outside of wall is preserved two or three courses on the street with the same construction, an occasional real header. The inside face of the wall is of one man and two man stones.

116 At point 23 pg 50 a cooking
pot was found at a depth of
15 cm below wall at that
point (out to house).

In the corner of room 4, and at
pt 4 pg 91, the clearing showed
a foundation of steps covered
with clay brick which had
decayed into red earth.

The bricks were 55 mm thick
and at least 15 x 20 cm flat.
Foundation preserved as high as
wall in corner 4 and above the
anda wall.

June 9, Friday
In charge of central section of 3rd house
12 Workmen

At point 1, pg 112, a large bronze
ring was found, along with a
bronze handle and numerous
iron implements including the
blade of a dagger.

In the same cache were coins
also found 3 bronze coins
depth 30 cm below wall at
corner.

350-301

Coins
62
160
to
162

2 bronze coins were found
at pt 2, pg 112, depth 20
cm below wall at that point

350-301

198-199

A bronze coin was found at
pt 5, pg 91, 30 cm above low
wall at that point

154

A large 2-banded shayms was
found at pt 1, pg 112, depth
35 cm below wall at that
point.

4 bronze coins were found at
pt 2, pg 112, depth 20 cm.

Coins
63

The earth in corner at 3, pg 112
is blackened by quantities of
burnt material - flint of water
horn. There are numerous rough
pottery fragments which occur
also in pts one and two.

155
to
158

350-300

at pt 4, pg 91 a cylindrical terra
cotta horn was sunk in the floor
20 cm.

Photo No 6.

C 119 ✓ From stairway pg. 50 across
pts 62, 34, 35.C 120 ✓ Photo No 1, Scott's trench from
East.Nos 2, 3, and 4, Photos to
Mrs Eldridge.In wall of Scott's house
a bronze "cup" was found
Depth 250 cm below trench.A large vase was found
scattered
but largely
preserved
in well
at depth of
150-200
cm.At depth of 200 cm, were
also found two large balls
of stone, one 20 cm in diameter
and the other 22 cm in "At pt 3 pg 112 a terra cotta head
was found, a lead pin for clamps
a bronze diadem, and several
iron objects, among them a
key.The fence at pt 1, pg 112 is as shown
in plan. The North South wall is
built of large one and two near
stones and East West wall is of
one man stones.A bronze coin was found
at pt. 4, pg 112, depth 70 cm
below wall here. Coin
66

at pt 64, pg 50 there is a stone
with its under surface hollowed
out and fitted over a drain
pipe 20 cm in diameter. The top
of stone 35 cm below the corner
of wall at this point doubtless
marked the level of the threshold
here and protected the end of
the drain. The drain itself runs
along the wall past 31 and at
pt 65 empties under a large
flat slab into a stone cover
drain, which runs North +
South from 65 under pt 28.
This was probably the line of a
street earlier than yet paved,
three periods and the drain
continued to serve after the
street was destroyed. In the
court, 24, pg 50, fragments
of a large wheel and of a
wheel were found immediately
in front of the cut block.
They were doubtless the
family receptacle for
washed water. The level
of the cover drain at pt 65
is 70 cm below the threshold
onto the street.

143
350-38

The door well at pt. 6 pg 91
has markings for joints of wood
and a door (as shown in
architect's drawing).

Saturday June 10 -
In charge of central section of 5th terrace
19 Workmen.

The well in Scotts. Kaurza stopped at
a depth of 260 cm. The ear pot in
it is mentioned on page 118.
Inside the well is a great mud lining
of one man stack. The top 80 cm
thick of a good block 75 x 75
with a hole 50 cm across (round)
in the center of it.

2 bronze coins were found at pt Coins
9 pg. 33 depth 20 cm
with surface at level with
top of wall preserved nearest
that point
350-30

A bronze coin was found Coins
at pt 5, pg 112 level with top 68
of wall here. (181)

2 bronze coins were found at Coins
pt 6, pg 112 depth 50 cm. (208)
below wall at corner. 67 209

A bronze coin was found Coins
at pt 7, pg 91 depth 100
cm below corner of wall 70 (183)
at 5.

3 bronze coins were found at pt 5 Coins
pg 112 in a pot at that point 71
1020 cm. below level of wall (187-189)

all coins of this page either 350-300
or 394-300

The large wall pts 66-67 south of well pg 50, is filled with yellow clay, apparently sterile, to a height of 60 cm. above the level of the top of the well. The stones that constitute the wall are ca. 30 x 40 x 60 cm and their size seems to argue an early supporting wall which determined the lines of the threshold at 47 (perpendicular to it) and line 6 north of the well.

At pt 13 a pit was dug in the floor and a large potter implanted. Condition (only top half of the potter implanted).

In room D pg 91, the corner 8 is slanted - with the dark staked walls of an early period built against it. The dark staked wall shown returning into the room is preserved only 40 cm. its end was apparently destroyed at the time of the later room, the west wall of which was built on top of the west wall of the early room. Quantities of burned materials show early floor level, 19 cm. above level of well. The later floor level is shown to be 30 cm. above level of well by the fact the wall 12 was built on the floor. The stones at pt 14, constituting the line of wall 12, separates the higher level of the room from the lower level of the well.

Directly in line with wall 10 no wall was built in late period to correspond south of the doorway. That is no threshold.

At point 10, pg 33, a marble finger dedication gift was found depth level with nearest wall - 40 cm below surface.

At point 68 pg 50 several leaves were found depth 70-85 cm below corner at that point. (suit to House).

June 12, Monday

In charge of central section
of 3rd terrace.Coin A bronze coin was found
72 wild - pt 8, pg 112
(273) 550-500Coin A bronze coin was found
73 wild. pt 9, pg 112.(272) A lead weight was found
at pt 1, pg 126, wild.u.c. It is 4 cm. square and has
T inscribed on its upper
surface.

June 13, Tuesday

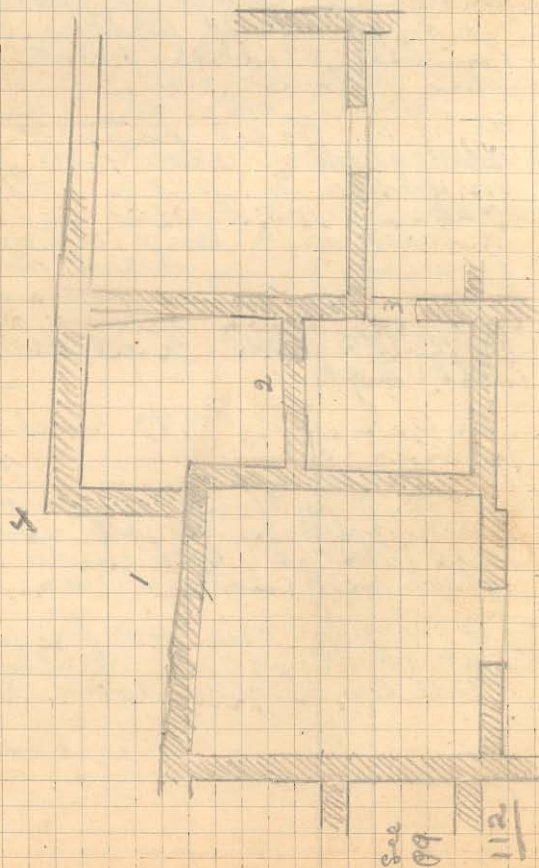
In charge of central section
3rd terrace

12 Workmen

A bronze coin was found at
pt 1, pg 112, on wall at
that point. Coin 74
(268) u.c.A bronze coin was found at
pt 7, pg 112 at depth of corner
of wall at that point. Coin 75
(269) u.c.At pt 2, pg 110, an Ionic capital
was found, narrow side up
as shown in plan, with inscribed
roll side toward the east step.
It rested on a large cement
forming a very hard stratum.Photos Nos 1 and 2 for Miss
Eldridge.Photo no 3 - Scott's trench from
west. u.c.At pt 13, pg 91, 2 bronze coins
were found on the old wall
and that pt - and under the
floor of the later room. Coin 76
(401-2)A bronze coin was found
at pt. 8, pg 112, depth
120 cm. below corner at s-
Coin 77
(280)

Sec. 99.

92



North point of House section west of framed Street.

Sec
99

112

June 14, Wednesday

In charge of central section of 3rd terrace
19 workmen.

A terra cotta lining was found at
pt 10, pg 112 at level of wall at
that point.

at pt 5, pg 112 a terra cotta slab
was found, used.

at pt 11, pg 112 a bronze coin
was found on the little ledge
of well at that point. Coin
78

Photo no 4 - ruined

Photo no 5 on well - view of
north wall of house - a series
8-9-7, 11/12, from the
west.

(271)

350-300

A bronze coin was found at
pt 4 pg 112, depth level with
outside (north) wall at
that point. Coin
79

(457)

at pt 7 pg 126 the wall, while
preserved all the way across
the room, is seen also in the
center to a depth 30 cm. below
the well, preserved portions, and
even with the floor as shown
by the threshold at pt 3. The
opening must represent the
door to room north of 2.

2 coins were found at pt 2,
pg 112, depth 50 cm.
below wall at that point. Coins
80.

(298-9)

350-300

In the section shown on page 112, the walls are of one and two man stones as usual. The N3 walls thicken perceptibly as they become deeper at the north end. The north wall (East West) is roughly 30 cm. thick but has slipped in many places so that it is very irregularly preserved.

The west wall from 5 to 8 is faced on the outside with squared blocks, some of which become large toward the corner.

At pt 11 on 11² a layer of earth 30 cm. thick appeared under the wall which is here preserved only to a depth of 130 cm. Under this layer of earth is another wall on the same line; very regularly built with some good stones and continuing along the room. The wall by tree is not interrupted in the direction of its depth by any layer of earth.

By the side of the lower wall on 10, charred wood was found. Depth 60 cm.

Photo no 6. View from corner 4, on 126 Eastward.

June 15 Thursday

In charge of central section 3¹/₂ terrace
17 workmen

On map pg 51, in course of removing the railway, walls appeared as shown on plan from pt 3 to 60, then from stone by preservation (below ration) rock in places, shows them to have been merely foundation walls. By pt 71 on 5¹ there is a section 100 cm. long in the terrace wall with a piece at each end. The terrace middle to the east of the pt 7, section is of smaller stone (one and two man size).

- (1) Coins AE found in Eldridge str. just above surface of pavement point 62 on map pages 50-51
324 350-300
- (2) One long piece of AE (one) near floor } point 70 on
One piece of Fe Nail " " } map page 50-1
- (3) One AECoin found on floor at point 71 map p. 50-51
314 350-3347
- (4) (One piece of bronze picked up by workman in South house.)

June 16, 1922 - Friday
In charge of central section - 3rd terrace

- workmen
- (1) One AE coin found by eye note on floor of next to furthest north room to east of clearing (319) 350-300
 - (2) One AE coin found at no 28 map p. 48-49 just below r.r. track. (392) 350-300
 - (3) One piece of AE with hole in it found at point 39 on map p. 48-49 about 10-15 cm above floor level
 - (4) One AE nail found at same point as piece of bronze mentioned above in note (3).
 - (5) One piece of worked marble perhaps a base for a tiny altar or statuette found by back wall of stoa at depth 75 cm from top of wall. As noted indicated by 2nd stake of ballands to N on wall.
 - (6) AE cover to jar found at point 40 on map p. 48-49. Depth from top of N wall directly in front of point 25 cm.
 - (7) AE coin found at point 40 on map p. 48-49 just below top of threshold block. (348) 400-350?
 - (8) AE coin found by workman in section to E of clearing etc. (463) - a little after 300 (?)
 - (9) AE coin found at point 42 map p. 48-9. Depth from top of stoa wall 1 metre. (323) 350-300
 - (10) AE coin found by workmen on way to spring (344)
 - (11) Lead ring
Piece of stone shaped like egg. } found at point 62
Piece of red plaster. } on map p. 50-51

June 17 - Saturday
In charge of central section - 3rd terrace
12 workmen

- (1) One tiny jug found at point 43 on map p. 48-9. Depth 30 cm from top of N wall of that room.

A silver coin was found at pt. Coin 5, pg 32, depth of wall at that point. (373) 81

A bronze coin was found at Coin pt 11, pg 33 on level with wall preserved to the south. (349) 400-350

Photo across pt 4, pg 92, from C 121 west -

(373) = Corridor bet 500 - 400 B-C
Pavement Stamboul

132.

Monday June 19thIn charge of central section 7th terrace.

11 Workmen.

Coin
83
A bronze coin was found at pt 44
pg 49th depth 40 cm below level
of wall to south.

329

The walls shown in room ① pg 133
are at a depth of 80 cm below the
boundary wall of the room. The
south wall of room goes down only
50 cm, and then rests on earth.
The other walls go down to the
lower level. The south wall, however,
as far east at pt 2, rests on
earth. There is a pipe at pt. 2.

At pt 38, pg 48, the heavy wall
goes down, resting on earth, only
to the level of the top of threshold
by its NE corner, which
shows in later times a
higher floor level. The remains
of the altar between pts 27 and
38, were then completely covered.

2 doors led from the room
about pt 42, pg 48 to the north
where there was a stone
paving. At pt 45 are the
remains of a flight of stairs.

To the north of this section walls
developed as shown in the
plan, pg. 133.

Steps, apparently leading up to a door
on a street appeared as shown at pt. 48
pg 49.

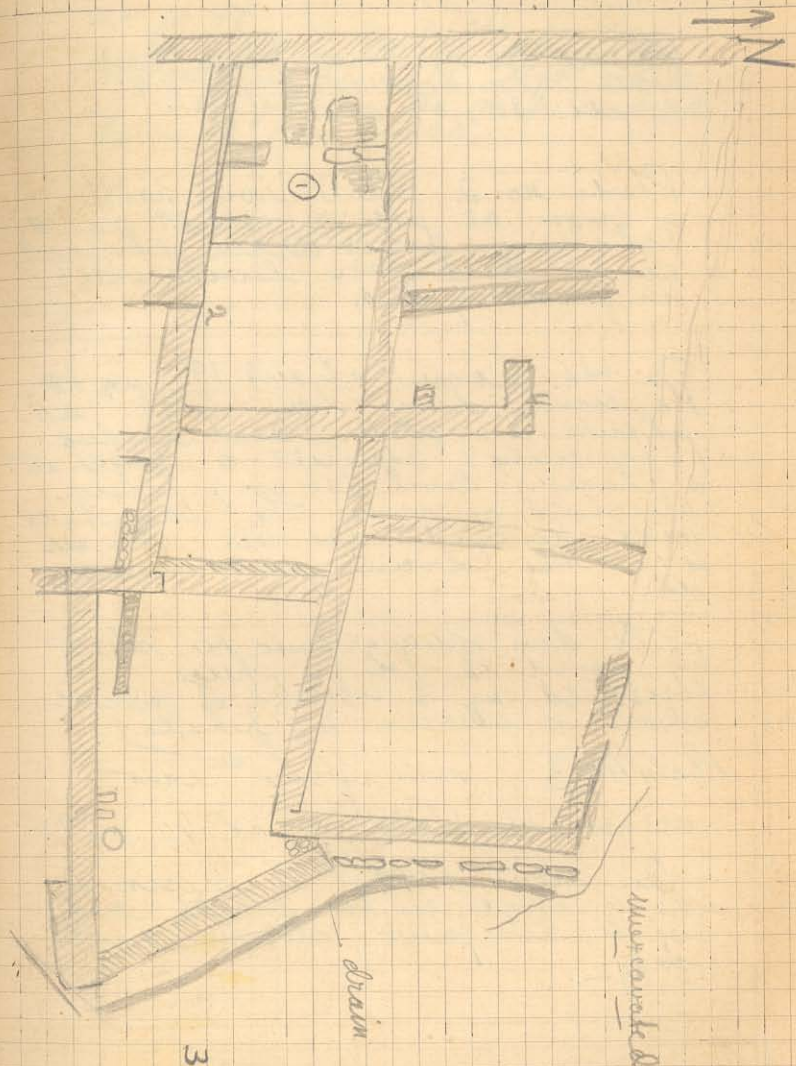


Photo No 1, View from East wall near pt 45, pg 49 to pts 38, 39 etc.

Photo No 2 View from north of room at pts 19 and 39 pg 48 showing cover drain through center and low level wall in front of door.

In the room, about 19, pg 48 the cover drain runs north as shown on plan and sides (apparently) against a wall at a lower level (50 cm) below threshold of room. The threshold was bridged, however so as to let the drain pass under it.

The door opening into the street by point 48 has a huge threshold, of 3 blocks of porous stone - shown in photo.

Photo No 3, view from east across threshold at pt 46, pg 48.

One iron socket is preserved as a hinge in the south end of the door jamb, set in earth only.

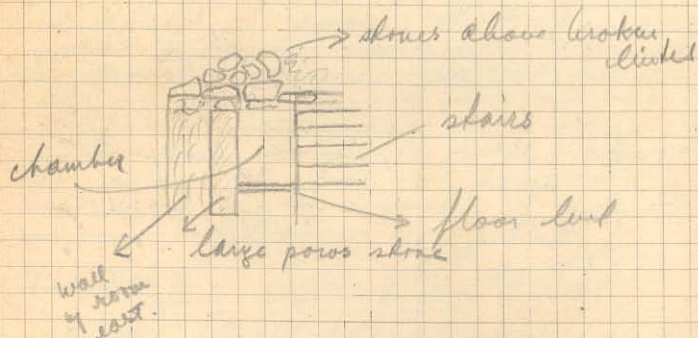
In the room about pt 41, pg 48 at pt 47, is a niche in the east wall of depth shown by the section, by wall left white in the plan. The niche extends down to the floor.

136

In cleaning in House C, about
pt 14, pg 50 a well, circular
built of one near stones, was
found at the corner, pt 14, as
shown in plan.

At pt 62, in the face of
wall toward the court, pg 50,
a grotto was found running
back along the side of the stairs.
It is, in south elevation, as follows:

scale 1 block = 25 cm.



Walls developed as shown in
map, pg 110.

Photo no 4 in roll, view of
trench XIV, from top of
terrace wall to ESE.

The court about pt 1, pg
110 is paved with a flagging
of stones, over which was a
very hard incrustation.

Photo no 5 - Miss Eldridge

Photo no 6 - Corner of
Scott's house, pg 110, pt no 2
from east, showing
stones before restoration. c207

Photo no 1 on roll - View of
grotto by stairs House C c203

Photo no 2 on roll - View of
grotto by stairs House C
showing position of stones
before restoration. c204

Photo no 3 - View of grotto
House C, showing tile pipe
during process of clearing. c205

Section north of Shoal Beach
 June 20. Tuesday

In charge of Central section 3 $\frac{1}{2}$ Terrace
 10 Workmen

Com
84

A bronze coin was found at pt. 3 pg 133
 wild.

316

400-50

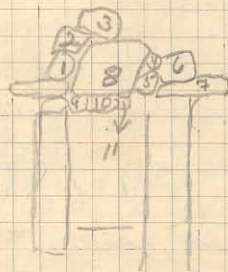
In the eastern house under the walls
 developed as shown along the drain
 pg 133.

By pt 42, pg 48 a wall developed
 across the triangular space in the
 course of the clearing - see plan.
 To the east of this wall is a
 pair of rather flat-topped Cobble-
 columns.

A partial section of a rough pot
 with holes in one end like a
 salt shaker was found at
 pt 42, pg 48, by the stone wall
 and 15-20" above floor of
 house at that point.

By pt 24, pg 48 - a wall developed
 as shown from 24-27 on plan.

Following is a rough
 sketch of grade shown on
 page 138



June 21, Wednesday

In charge of central section 31 $\frac{1}{2}$ terrace.

10 workmen.

8 men engaged in moving dirt

by digging well in house C.

Johnnie cleaning grates, house C.

Coin 85, A coin 1E was found und.

325 350-300

Coin 86, A bronze coin was found at
pt 43, pg 48, on the paved
floor.

315 350-300 A lead coin was found at pg 4,
pg 133, at level with top of wall
here.

In the well, House C, depth 250
cm, we found a small terra
cotta tower.

At depth of 300 cm, we found
numerous terra cotta fragments
- a female head, a horse head,
and an unidentifiable badly
damaged statuette.

In the grates at pt 62, pg 50
we cleared out the earth
and found that it extended
all the way to the rear wall of
the house, was bounded by
the stair foundations on the
west and a very thin wall
set against the wall of room
101 - on the east. (see plan).

For south elevation see pg
136.

The problem of the roofing
of the "grates" was unsolvable.
Apparently wood supports
were used, though no certain
beam cuttings could be found.

In place of the lintel of the
cupboard door we placed
2 bars of iron and reset
the stone above it as near
their normal position as
possible.

June 23 Friday

The North South Walls are ¹³³ well
 133 well run farther toward
 the edge of the hill.

In well house C. at
 depth of 470 cm, a hard
 limestone auto-copied was
 found.

Fragments of pillars came
 from depth 400-470 - badly
 broken.

1306
1727
1815
1947
1948
1705
1665
1447

50

21

53

8

135.60

Index.

Trench II, pp 2-3-4-5-7-24

Trench III, pp 6-7-8-9-10-11-12-14
15-16-26, 27

Trench on the Point 12-13

Trench IV see maps pgs. 19 & 31.
pg 18, 19, 21, 22, 23, 27, 28, 29, 30, 35,
36, 38, 40, 44, 45,

Trench VII pg 20

Trench IX. pg 25, 26, map, pg 41
37, 43,

House of Buried P. Has. A

Maps pg 32, 48,

Notes 34, 39, 44, 68 (balance) 75, 105,
129 (coin 1), 130 (coin 7), 134, 135,

House of Long Court. B

Maps 50, 51, 91, 126

Pg 57 (coin) 59 (coin) 62 (coin)
65 (coin 23), 77, 78 (coin 39), 80, 81 (coin 45)
82, 82 (coin 46) (coin 47), 83, 87, 90, 97, 98,
102, 103, 104, 107, 107 (coins 58, 59), 109, 111, 118,
116, 117, 120, 121 (coin 70), 122, 125 (coins 76)
129 (coin 3)

House of paved floor C

Maps pg 50, 92, 126

59 (coin) 61 (coin) 63 (coin) 65 (coin 24)
65 (coin 25), 65, 68, 70 (coin 27), 71, 72, 73,
73 (coin 32), 74 (coins 33, 34), 74, 75 (coin 35) (coin 36)
75, 77 (coin 38), 77, 78, 78 (coin 40) (coin 41), 79
80, 80 (coin 43), 82, 86, 87, 88, 89, 89 (coin 55), 93,
104 (coin 57), 104, 106, 111 (coin 61), 113, 114, 115,
116, 117 (coin 64), 119, 123, 127 (coin 79), 136,
139, 141, 143.

House of Marble Wash D

Map pg 112

117, 117 (coin 62), (coin 65), 118,
119 (coin 66), 121 (coin 68) (coin 69) (coins 74)
125 (coin 74) (coin 75) (coin 77), 127 (coin 78)
127 (coin 80), 128,

Mel Alley section

Maps. pg 48, 105,

Notes 46, 47, 52, 54, 55, 56, 57, 58, 59,
60, 99, 100, 101, 111,

Upper Eldridge Street

Map. pg 69

57 (coins), 64 (coin 26), 71, 72 (large coin), (coin 31)
73 (rose), 75, 97, 108,

Sloa House

E

Maps pg 48

pg 62

Plain Sloa (section south of drain)

Maps. pg 33, 48-49, 55

Notes 35, 36, 40, 42, 43, 46, 47, 54, 55,
59 (coin) 62, 63, 64 (coin), 64, 70, 71, 72 (coin 28),
76 (coin 37), 76, 83, 84, 85 (coin 53), 87, 96, 97, 98,

Section, Plaza, Stoa (See trench VI)
 north of drain.

Map, pg 66.

Notes 72, 73, 75, 76, 93 (coin 56), 93, 97, 104,

Area north of House of Burned
 Pillars and Stoa south of drain

Maps, pg 29, 32, 48-49, 133.

Notes pg 34, 35, 42, 83, 84 (coins 48, 49, 50, 51, 52), 84,
 86 (coin 54), 87, 121 (coins 67), 123, 130 (coin 2)
 130 (coin 9), 131 (coins 81, 82), 132, 132 (coin 83)
 138, 140, 142-

Area south of Terrace wall.

Maps pg 51

47, 52, 53, 57, 61, 129,

Trench XIV, South trench.

Map, pg 110

See Sect.

109, 118, 121, 125, 137.

The verb. -

yasmak = to write

Present indicative Definite yapáγω
 yapıorum yapıorus yapıordunuz yapıorlar
 yapıorsun yapıordunuz yapıorlar

Imperfect yapıor idim yapıor idik yapıor idiniz yapıor idiler
 " " " " " " " "

Present yapıorun yapıorsun yapıorlar yapıyorsunuz yapıyorlar
 yaparsın yaparsınız yaparlar

Imperfect yapıor idim yapıor idik yapıor idiniz yapıor idiler
 " " " " " " " "

Future: yapacakım yapacakmışım yapacakmışsınız yapacakmışlar
 yapacaksin yapacaksiniz yapacaklar

Past Future yapacak idim yapacak idik yapacak idiniz yapacak idiler
 " " " " " " " "

Aorist (See 85) yapdı yapdın yapdık yapdınız yapdılar

Perfect: yapmışım yapmışsınız yapmışsınız yapmışlar
 yapmışsın yapmışsınız yapmışlar

Pluperfect: yapmış idim yapmış idik yapmış idiniz yapmış idiler
 " " " " " " " "

Imperative

γὰρ = γράφε ἢ γράφε
 γὰρ σὶν = ἄς γράφῃ ἢ ἄς γράφῃ

γὰρ ἰνιζ = γράφετε
 οὐκ ὀφείμυζ = read
 γὰρ σὶν λαρ = ἄς γράφωσιν

Subjunctive

Present def.	ἴαν γράφω	ἴαν γράφω
γὰρ ἰσεν	γὰρ ἰσεν	ἴσεν ἰσεν
" ἰσεν	"	" ἰσεν
" ἰσέ	"	" ἰσέ

Imperfect definite ἴαν ἔγραφε

Very Rare	γὰρ ἰσεν	ἴαν ἰσεν	ἴαν ἰσέ
	" ἰσεν	" ἰσεν	" ἰσεν
	" ἰσέ	" ἰσέ	" ἰσέ

ἴαν γράφω Present (indefinite) ἴπορδουπῆρος

γὰρ ἰσεν	γὰρ ἰσεν	ἴσεν ἰσεν
" ἰσεν	" ἰσεν	" ἰσεν
" ἰσέ	" ἰσέ	" ἰσέ

Imperfect ἴπορδουπῆρος.

Very Rare	γὰρ ἰσεν	ἴαν ἰσεν	ἴαν ἰσέ
	" ἰσεν	" ἰσεν	" ἰσεν
	" ἰσέ	" ἰσέ	" ἰσέ

Future Subjunctive

γὰρ ἰσεν	ἴαν γράφω ἢ γράφω
γὰρ ἰσεν	γὰρ ἰσεν
" ἰσέ	" ἰσέ

No part future subjunctive

1 st Aorist	ἴαν γράφω
γὰρ ἰσεν	γὰρ ἰσεν
γὰρ ἰσεν	γὰρ ἰσεν
γὰρ ἰσέ	γὰρ ἰσέ

2nd Aorist

ἴαν ἔγραφε	ἴαν ἔγραφε
γὰρ ἰσεν	γὰρ ἰσεν
" ἰσεν	" ἰσεν
" ἰσέ	" ἰσέ

n.B. also used for part future subj.
 Takes place also of the Imperfect subj.

Perfect ἴαν ἔχω γράφα

γὰρ ἰσεν	ἴαν ἔχω γράφα
" ἰσεν	" ἰσεν
" ἰσέ	" ἰσέ

Pluperfect Subj ἴαν ἔχων γράφα

γὰρ ἰσεν	ἴαν ἔχων γράφα
" ἰσεν	" ἰσεν
" ἰσέ	" ἰσέ

Optative :-

Present	eide	vá	ypápw
yasaim			yasalim
yasasin			yasasiniz
yasai			yasalar

Imperfect eide vá "ypápw

ypáw	idim	ypáw	idik
"	idim	"	idimiz
"	idi	"	idiler

Perfect :- eide vá "exw ypápw

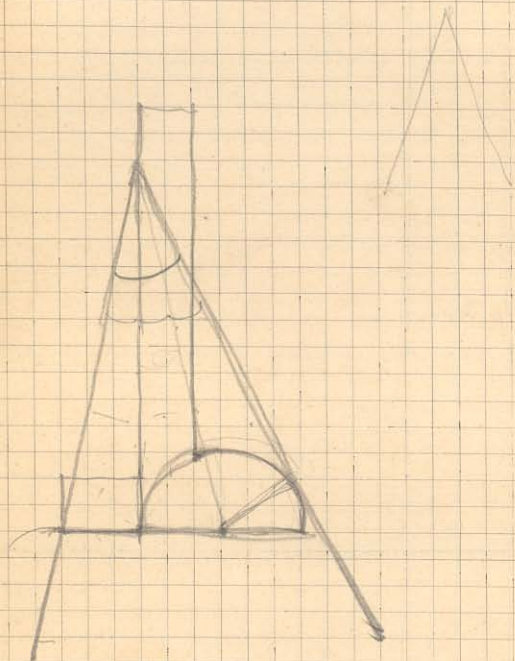
ypáw	olaim	ypáw	olaim
"	olasim	"	olasimiz
"	ola	"	olalar

Pluperfect: eide vá "exw ypápw

ypáw	ola	idim	ypáw	ola	idik
"	"	idim	"	"	idimiz
"	"	idi	"	"	idiler

$$19 \times 5$$
$$144 + 25 = 169$$

$$\begin{array}{r} 13 \\ \underline{13} \\ 39 \\ \underline{13} \\ 169 \end{array}$$



on

fundick = filberts
 kuumak = dates
 eign = flour
 dur = salt
 kepit or spirta = matches
 limon = lemon
 partkal = grape
 pirich = rice
 o'bach-kah-kalam = pen

miktch = mosque (?)

shusha = glass
 lamba = lamp

{ varda böyükh, varda, kütschük
 whether ditto or big.

bardak = glass

müm = candle.

palto = aurcoat

pez = hat

sarak = leaf band (big one)

jasma = " " (little one)

ordá = afteward. (?) from there

Monday = wazár.
 Mon

Wazár - irtasi

sali

charshamba

pershambe
 juma'
 juma' - irtasi

Nouns

bichok = knife

kashik = spoon

chatal = fork

chouguk = boy

piskia = towel

mendil = handkerchief

shetir = sugar

adam = man

hanum = woman

kiz = girl

kachi = boat

Kedi = cat

Klepuk = dog

begik = horse

Kash = bird

at = stud

at beiz = stud horse

{ quirmizi = red

{ kisiil

Buyas = white

Sari = yellow

Sarak.

rimk = color

anlamak =

dogru = correct

San'at - iniz = your business

Tygjar = merchants

sokaghi = street

kurskun - kalam = lead pencil

arasyndaki = between

zid = the opposite

temiz = clean

dik-mek = hammer

kestarkh' = saw

kirli = dirty

ferá = bad

nozik = clean

oguk = far

yakín = near

rakit

zaman } tin

haradit = news

ba'd =

nozik = clean

oguk = far

yakín = near

rakit

zaman } tin

haradit = news

Verbs. -

- Kāimamiak = to boil
pidi'miek = to cook
ver'kek = to give
yas-mak = to write
kes-mek = to cut
chal-mak = to steal
cha'mak = to call
itch-miek = to drink or smoke
dur-mak = to stop
deu-mak = to have
en-mek = to learn
chick-miek = to climb
dushum-miek = to think
demek = to say - mean
konish-mak = to speak
okoo'mak = to read
ye-mek = to eat
ush-it-mek = to hear
geer-mek = to see
abidat-mak = to decide
chalish-mak = to work
gis-mek = to walk
bin-mek = to ride
sour-mak = to drive
yuz-mak = to swim
kooy-mak = to put
al-mak = to take
yikamak = to wash
kalk-mak = to get up
yat-mak = to sleep
antemak = to understand
yermak = to arrive - be good for
doo-ue-mek = to hear
de-mek = to say
delemek = to say
otwumak = to dwell

ὁ χαρμῆς = pick.
τὸ φρέσι = shovel

bil-mek = to know istermek = to want

Pres.

biliorum
biliorum
bilior

isterim
isterim
isteri

biliorus
biliorumuz
biliorlar
ler

isterik
istersiniz
isteriler

Future

gelmek = to go

gelecekim
geleceksin
gelecek
geleceksin
geleceksiniz
gelecekler

Part

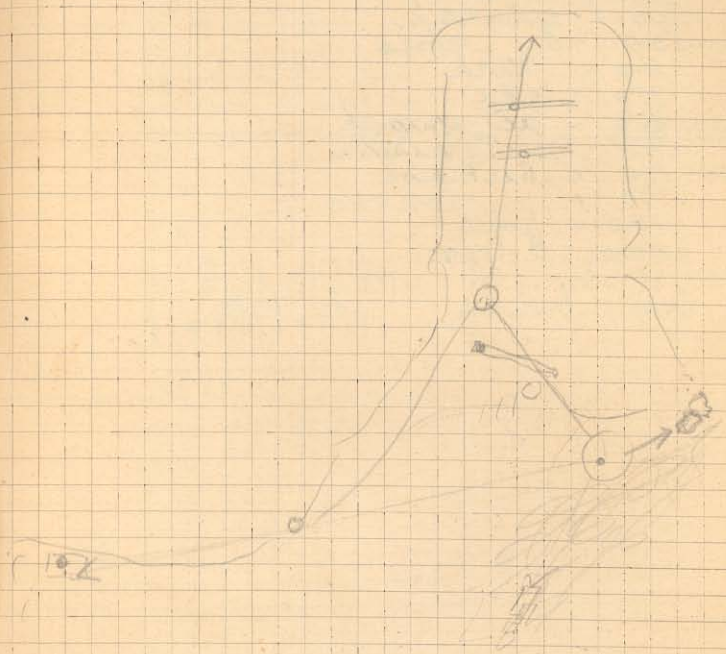
Bakmak = to look

Bakdim
" di
" di
" dik
" diniz
" deler

to me

(beni) olajak = to have

~~gök~~ - zee-yân-yök = it matters not



- 1 = bir
 - 2 = iki
 - 3 = üç
 - 4 = dört
 - 5 = beş
 - 6 = altı
 - 7 = yedi
 - 8 = sekiz
 - 9 = dokuz
 - 10 = on
 - 11 = on bir
 - 20 = yirmi
 - 30 = otuz
 - 40 = kırk
 - 50 = eli
 - 60 = altmış
 - 70 = yetmiş
 - 80 = seksen
 - 90 = doksan
 - 100 = yüz
 - 1000 = bin
- bin, binda = iki bin

$$\frac{10}{9} = \text{fuhud}$$

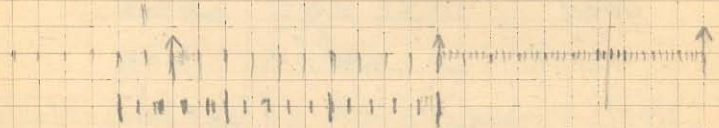
$$\frac{15}{11} = \text{indak}$$

$$\frac{12}{13} = \text{indak}$$

$$\frac{15}{15} = \text{indak}$$

16.25 < forward
 Verrier 2. ~~3~~
 Verrier 12. $\frac{1}{3}$
 backward

29.75 < $3\frac{1}{3}$ new
 Verrier



slowly = yarásch - yarásch.
there is = rar
good morning = sab-alá - high-rose-son
good morning = rak-i, scheri-fleri-
niz - high-rose-son
(hair-of-sun)
yes = covet
to eat = ét-mik
this place = boó-rah-dák
that place = óh-rah-dák
beautiful = goo-sél
good = eyi
much = chók
good evening = ak-sham, háir-otsum
good night = gedzik-háir-ot sum.
bread = ét-mik
milk = soot
tree = agatsch
spring = bumar or ajásma
under = asch-a-ghe
mountain pass = béll
ajasma = Spring
many-colored = ola
monument = astar

bagtschi = garden
basch = head
waiv = slope
bogas = narrow (noun)
vögük = large
wostan = garden
wulak = spring
wurun = hill (foothill)
deir-nun = mill
demir-jolie = railway
eski = old
gök = heaven
kali = fortress
kara = black
kisil = red
Köprii = bridge
kaseh = stone
daha = yet

chagyrjor = he calls
 arayor sumuz = you seek
 ya-moor-kavasi = it is sunny
nashmet - var
 ya-moor-var = it rains
 kisch = it is cold

burak-dak = kas = dig here
 bish-a-buldu = you found something
 tsabouk ishlak = work fast
 dikaket = with care

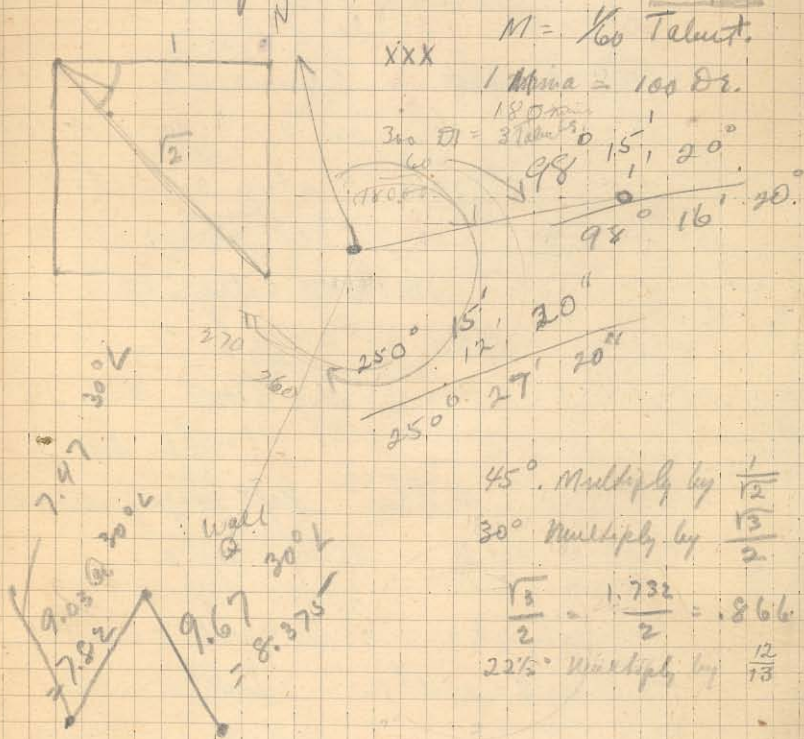
mazy
 be-e-be git = he went along
 yan-i-mam gel = come along

{sen-bilersen - bir-iki
 {ben-bilorum - jus-iki
 shingdi = new

alab-dawa-ediorum = *Ediorum*

oidzak = it is hot
 sorovar = I shall have
 asker = soldier
 yarim = tomorrow
 boudjoun = today

alive tree = zelinagatsch.
 odun = wood
 Kapi = door.
 oofak = little.



vaktim varmi = have you time
 ajelenizmi var = are you in hurry

ascha dah = down
altunda = under
notunda = on

sopra = table = to eat
massat = table - to write

yok-a-dah = above

sa'at on iki, on var) (10 min of 12
dur yarash = stop a little
brack = let it be

at-una = distribute - throw this out

tsapa-iskler = work!

bahit = evening (with abl.)

ba'in = " (with dat.)

cholder-ordan = lift up from there

hosch geldi = wafers epicalc
hosch buldu = wafers oas zupa

toplak - kazmaili = galley it with the galley

keramit-paschasu = bits of pottery

Remains
of pottery

Mark = 70 below pt. use
- 2.89

20 ft.

18 ft.

{ 19 days Andrew
11 days George }

ismim = 9 am named

9.03

8.60

7.82

3.00,00 / 1.732

5418

5418

7224

781998

27) 200

189

343 | 1100

1029

9.67

.866

25 at 3 days each
2 at 1 day

3467 7100 5802
6924 5802

20 at 5 days each

7736

2 at 2 days

8,37422

1 at 1 3/4 days

1,732

1 at 3 3/4 days

1,732

1 at 2 3/4 "

3464

2 at 5 days

5196

1 at 4 3/4

12124

1 at 5

1732

2 at 3 1/4 each

2,999824

1 at 3

