

1) Trench no 13 - May 15, '22  
Character of top soil. Pieces of roof tiles.

(a) Small lamp found in N.W. corner depth 25 cm.  
from surface, - Greek lamp

(b) One ~~AE~~ coin in good condition found 25 cm.  
about 4 metres from S.E. or W side.

(c) Pieces of black stamped ware toward center of E side.

(d) Seven loom weights (lentoid)

(e) Pieces of stamens

(f) Pieces of small unglazed dishes

(g) Four small copper coins in same spot that the  
silver one was found but a few cms deeper.

A burnt layer in south end of  
the trench.

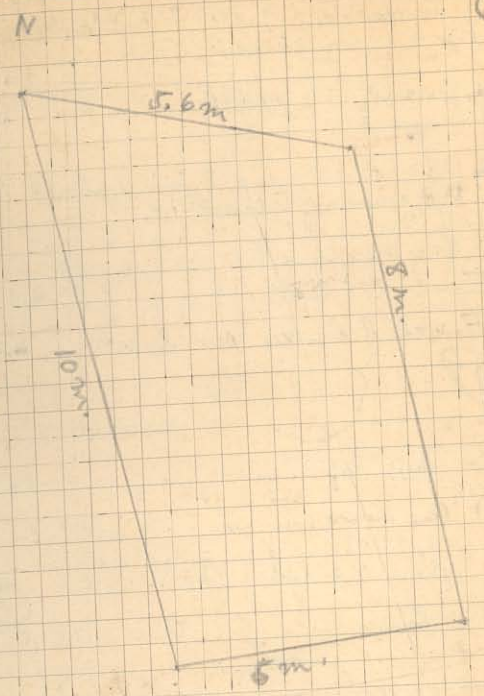
(h) Pieces of heavy pithos

(i) a shallow amber in two pieces (some still missing)

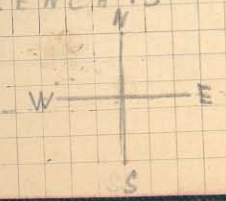
~~Handwritten notes~~

4<sup>th</sup>  
c  
289  
h  
293

□ = 50cm.



TRENCH 13 - MAY 15, 1922



3) French No 13 - May 16, 1922  
nine men at work. (one on Sr.)

- (1) Pieces of colored glass near eastern of E. wall of house
- (2) One lead weight found about 7m. to S.E. of the S.E. corner of trench 13.
- (3) One small silver coin in extension of trench 13 at depth of 20 cm. from top of E. wall of house. Near S.W. corner on the house.

107



type seen  
head & tails alike.

Re: M.B. Reptiles very scarce in extension

- (4) One bronze coin near east wall of house  
Depth 56 cm. from E. wall at about 1.5 m  
from N.E. corner of house wall.
- (5) 2 bronze coins from trench 13 R.E. section



217



239  
240

- (6) 9 bronze coins 1.5 m. E of point on E. house wall  
at distance of 1.4 m. from S.E. corner of house wall.  
Depth from top of house wall 50 cm.

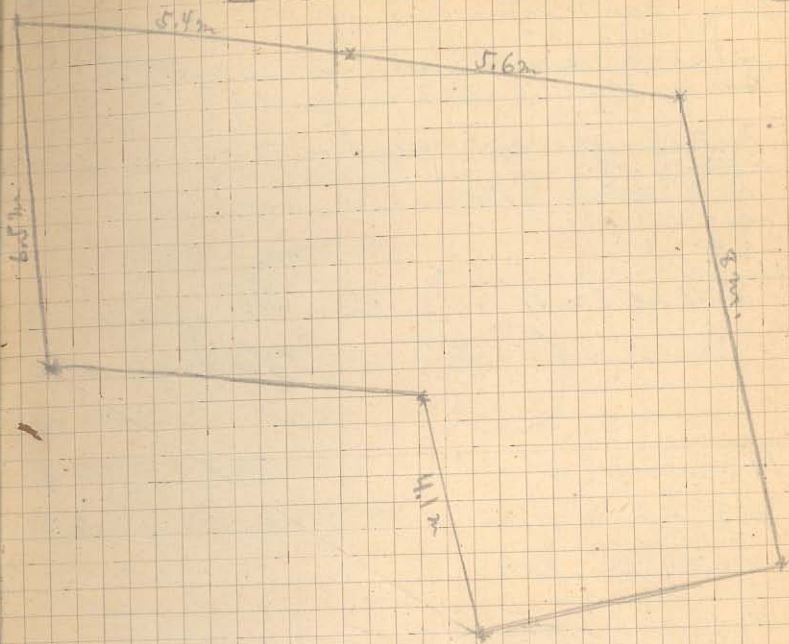


all about this size

all but one  
4 faces, but probably  
400-550 B.C.

□ = 50 cm.

4



5) Trench 13 and extension - May 16, 1922

(1) One bronze coin at depth of 45 cm. just outside of S.E. corner of wall of room. The depth is taken from top of S.E. corner of the room.

(218)

N.B. Burned area at depth of from 40 to 50 cm. filling walls of room and within them. Whole area of trench and extension seems to have been scene of fire.

(2) One bronze coin in N.W. corner of house at depth of about 10-15 cm from wall.



(223)

(3) Pieces of little bowl from extreme N. E. corner of extension of trench 13 about 10 cm. below top of drain.

(4) Pieces of little dish found in burnt layer of house in extension part of trench 13. Depth 50 cm from walls of house.

(5) Terra cotta female figure with hippocampus. Mounted on pedestal. Found in N.W. corner of house at depth of 25 cm from the room wall.

(6) Bronze drawn handle at depth of 70 cm from point 130 cm from NE corner of house wall.

7) Female terra cotta figurine minus head found in dirt from NE section of the trench at depth of about 70 to 75 cm from E wall of house at point 1.3 m from NE corner of room wall.

(1) One silver coin in SE corner of room at depth of 60 cm. Below level of top of N wall.

(197) 400-350

(6)

(2) One <sup>small</sup> nail in same location as silver coin mentioned above (note 1).

(3) One bronze coin near middle and middle of W wall of room and at depth of 40 cm. level of top of ~~front~~ N wall.

(224)

400-350  
24 1/2

(4) 12 loom weights.

(5) Pieces of light jars, storage jars, and dishes.

(6) Some black stamped ware.

(7) One piece of AE wire.

(8) One square piece of AE.

7) Trench 13 and extension - May 17, 1922  
Five men at work.

400-35

(1) Small bronze coins at depth of one meter below E wall height at point 1.6 from NE corner of room in position toward center of trench at that point. (411-414)

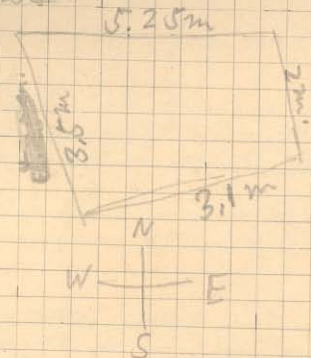
(2) In same spot as coins above human teeth and bones

(3) One bronze coin at depth of 1.1 m. below E wall height at point 1.6 from N.E. corner of room. In position toward center of trench at that point.



(4) A terra cotta figure of a camel in N end of trench 13 at depth 1.05 m measured from point in E long wall 1.2 m from the NE corner of the wall of the room.

N.B. Extended trench 13 to the east as follows



(5) near terra cotta and a piece of geometric pottery

(1) In this new extension I found one small AE coin near surface. (400) 305-2887 (8)

(2) Second coin found in same area somewhat deeper. (399)



(3) a head of female terra cotta figurine at depth of about 25-30 cm in new E

(4) Within large room at depth of 65 cm below top level of N wall one seated female figurine in terra cotta

(5) Within large room at depth of 50-60 cm. a large vase with deep cuplike base.

(6) Small coin found in E. extension at depth of about

(371)



(7) Two pieces early pottery in trench 13 at depth of about 1 meter from <sup>top</sup> surface of E wall.

(8) During day, bronze weights, some pottery, tiles and some black stamped ware found in trench 13 and extensions

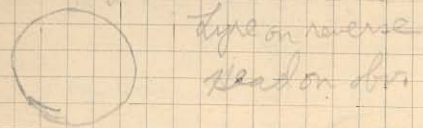
9) May 18, 1922 - five men at work  
Trench 13

(1) Two small AE coins in NE corner of  
room — at depth of 30 cm below top of  
N wall of room. **231-232**

(2) Part of female terra cotta figurine near  
N wall inside room. Depth from top of N wall  
from 70-80 cm.

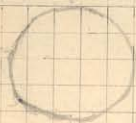
(3) Head of female terra cotta figurine from E **375**  
extension of trench 13. Depth about 40-50 cm.

(4) One fine AE coin in E extension trench  
**31** at depth of 60 cm from surface.



type on reverse  
head on obv.

(5) One small AE coin in room near N wall  
at depth of about 80 cm from top of N wall.



**366**

(6) Head of terra cotta female figurine  
high forehead. Found in room at depth  
of 80 cm from top of N wall.

(7) Curious piece of <sup>probably</sup> terra cotta figurine found  
in same location as head mentioned in (6) above.

(8) Lead jar cover found in room at depth of 80 cm from  
top of N wall of room.

(10)  
(1) In tiny room or recess in E extension was  
found pavement of reddish yellow clay.

(2) One sherd found in E part of east extension at depth  
of 60 cm from top of east wall of the small paved  
section mentioned above in note (1).

(3) One tile with patterns stamped on it found  
in room near NW corner at depth of 60 cm  
from point on N wall 1.1 m from the NW interior  
corner of the room.

(4) One AE coin in room at depth of 55 cm.  
below top of N wall of the room.

**367**

400-3502



(5) Female terra cotta figurine found  
at depth of 5 cm. from N.W. stone in W wall of little  
paved (note 1) chamber in E extension. It was about  
15 cm north of the N.W. stone in the wall of the small  
paved chamber of the E extension.

(6) Piece of terra cotta figurine in same spot  
and depth as figurine mentioned above in note (5)

(7) Part of terra cotta ~~sherm~~ — found just  
to W of S W block of wall of tiny chamber opening off  
the room in trench 13 and extension (W). Depth  
from top of this block 70 cm.

(1) (1) Small Eplauran coin found about 1.1m N.W. of and on level with top of W.W. stone of wall (W) of little pared chamber in E. extension of trench 13.

See on rev  
Lead on obs



108  
280-258?

(2) One small gold AE Colophonaz coin in W part of room at depth of 40 cm from point in W. wall of room 1.30 from the interior NW corner of the room.

Lyre  
Head



82  
400-350

(3) One bronze instrument found in same location as terra cotta base mentioned on page 10, note 7.

(4) 8 coins between trench 13 and E extension



281-288

etc. 4<sup>th</sup> c

(5) One stone seal found at depth of 60 cm from stone (N.W) mentioned in note (1) on this page. It was in space between trench 13 and E extension.

(6) Small AE ring from trench 13

(7) One piece of AE wire " " "

(12) One piece of bronze (perhaps handle of money?) lost found in extension trench 13. E. line palmed.

(2) Terra cotta figurine found in W extension. Depth of 60 cm from top of SW wall of little chamber opening off large room.

(3) One terra cotta in same location as that of figurine mentioned in note (2).

(4) Five coins in W extension (AE)



etc (406) to  
410 400-  
350

(5) One lead plate for heel of shoe in W extension

(6) One animal terra cotta in E extension (deep - at bottom of trench)

(7) One piece of terra cotta figurine found in W extension.

13) In Miss Goldman trench  
Two bronze coins (117+118)  
350-300

May 19 '22  
Trench 13 and extensions

Five men at work

(1) One A.C. coin in W extension (227)

(2) Part of bronze drainer handle from  
W. extension.

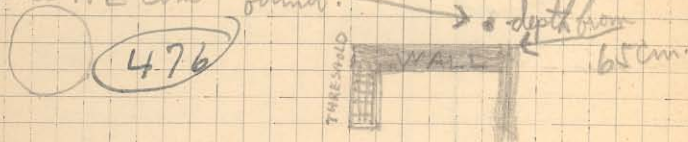
May 23, '22 Trench 14 (14)  
Eight men at work  
(1) One female figure found  
just outside of (North) space wall  
at E. West corner of the inner wall in trench 14  
and at a depth of one (1) meter from this point.

15) Trench 14 - May 19, '22.

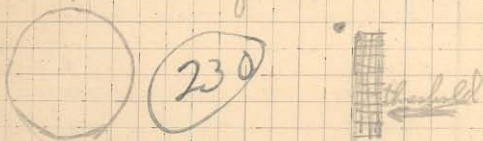
Five men at work.

- (1) A poor pavement found at depth of about 30 cm below the surface.
- (2) One AE coin in very SW corner of trench 4 between the two stone walls at that point and about 20 cm below the top of the E wall. (233) 350-300

(3) One AE coin found:



(4) One AE coin found over drain depth of 45 cm from threshold



Trench 14 - May 20, '22

(16)

(About 10 men at work - early in AM. more

(1) One AE coin in drain opposite well at depth of 50 cm from threshold stone top. (81) "C"



(2) One AE coin from well at depth of one meter from top. (236)



(3) One AE coin just above top of terrace wall in trench 4 (239) 350-300

(4) One AE coin in drain opposite threshold and 80 cm depth from top of threshold. (475)





17) May 22, 1922 - Trench 14  
8 men at work

- (1) One AF coin in drain just above well at depth  
of 60cm from top of threshold block



372

350-300

- (2) One small AF coin in trench 14 above  
well a little to E at depth of 30cm from  
surface.

226

May 23, 1922 - Trench 14

Eight men at work.

- (1) Head of female terra cotta figurine found just  
outside (NW) terrace wall near point 65 cm to E  
of the entrance W. point of terrace wall in trench 14  
and at a depth of 1 meter from this point

(2) Photograph no 4 on Mammitt's film of  
terrace wall from north east

- (2) One AF coin just below (to N) terrace wall at point 1.8 m  
from NW corner of the wall and 70 cm deep from this  
point.

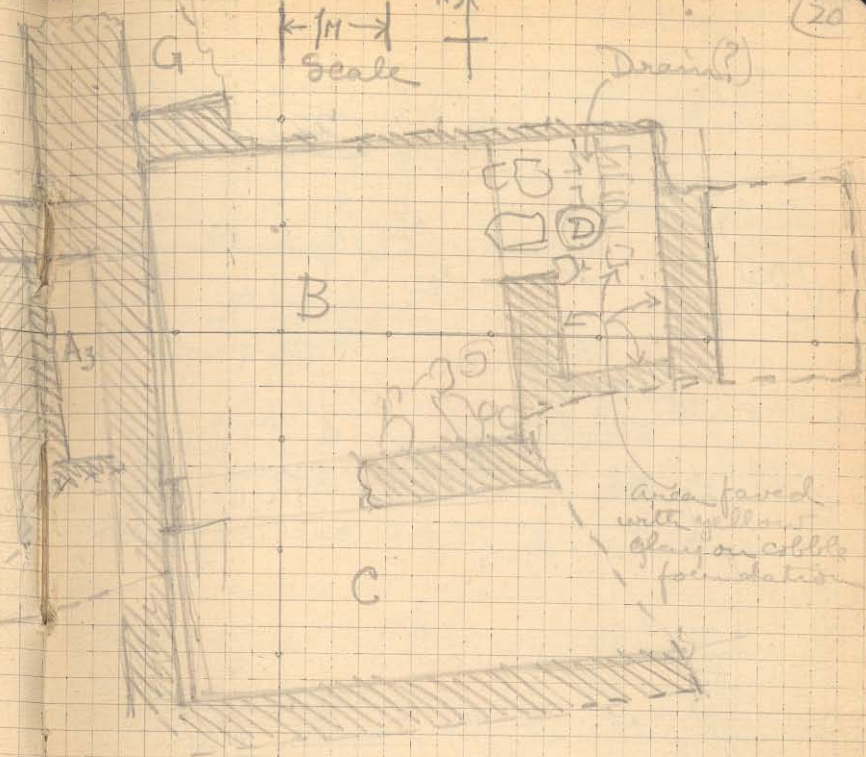
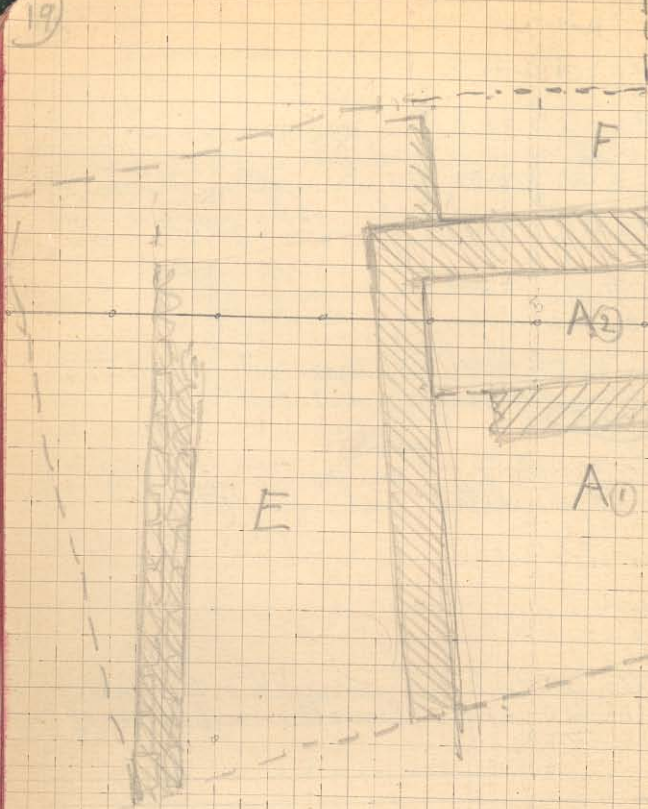
365

Photograph no 4 on Mammitt's film of  
well, the hold, and little wall from N. W.

(3) To south of well was found paved area.

(4) To south of paved area and road a wall  
was found running E and W.

(5) Further to the S and parallel to the wall  
mentioned in 4 was found another high wall of  
small stones.



In XIII →

21) May 24, '22 - 8 men at work - Trench 14.

(1) One AE coin found at foot of little wall terrace? of small terrace at depth of 1 meter from top of wall (near no 2 on map) one page

225 400 350

(2) Fine AE coin found in valley by workman good patina.

105

350-400

Head of Apollo laureate r.  
Rev. Winged horse ante r. Symbol and letters.

(3) One small jar found below by terrace wall near at point located at depth of 1 meter and one meter due N from point on top of terrace wall that is 6 meters from NW corner of terrace wall in Trench 14. Spot where vase was found is designated on map of trench 14 by 2

(4) One small vase found (broken) in N.W. corner of West wall of last house in Miss Gildner's dig

(5) Large pits at (1) on map on pages 25-26.

May 25, 1922 - 8 men at work - Trench 14 (22)

(1) One small bronze arrow point found in extreme southeast corner of Trench 14 at depth of about 30-40 cm. Near No (3) on map pages 25-26

(2) One piece of lead found in same location as arrow point mentioned in note one (1) above.

(3) One AE coin found in West room of Miss Gildner's excavations just above floor (at foot of terrace wall).



222

(4) Pieces of plaster with red color found ~~near~~ in SW section of the trench at depths of from 70-100 cm. below the surface but at same level. See Sec "C" map p 25-26

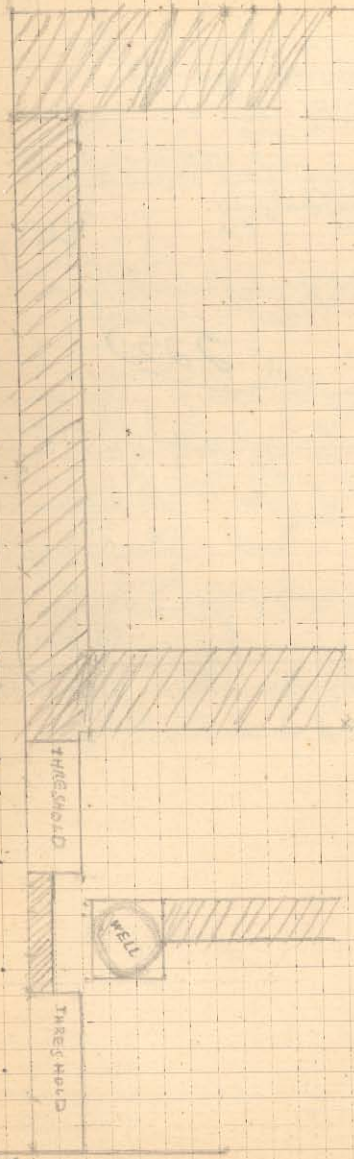
(5) One drain pipe <sup>cast iron</sup> No (3) on map pages 25-26

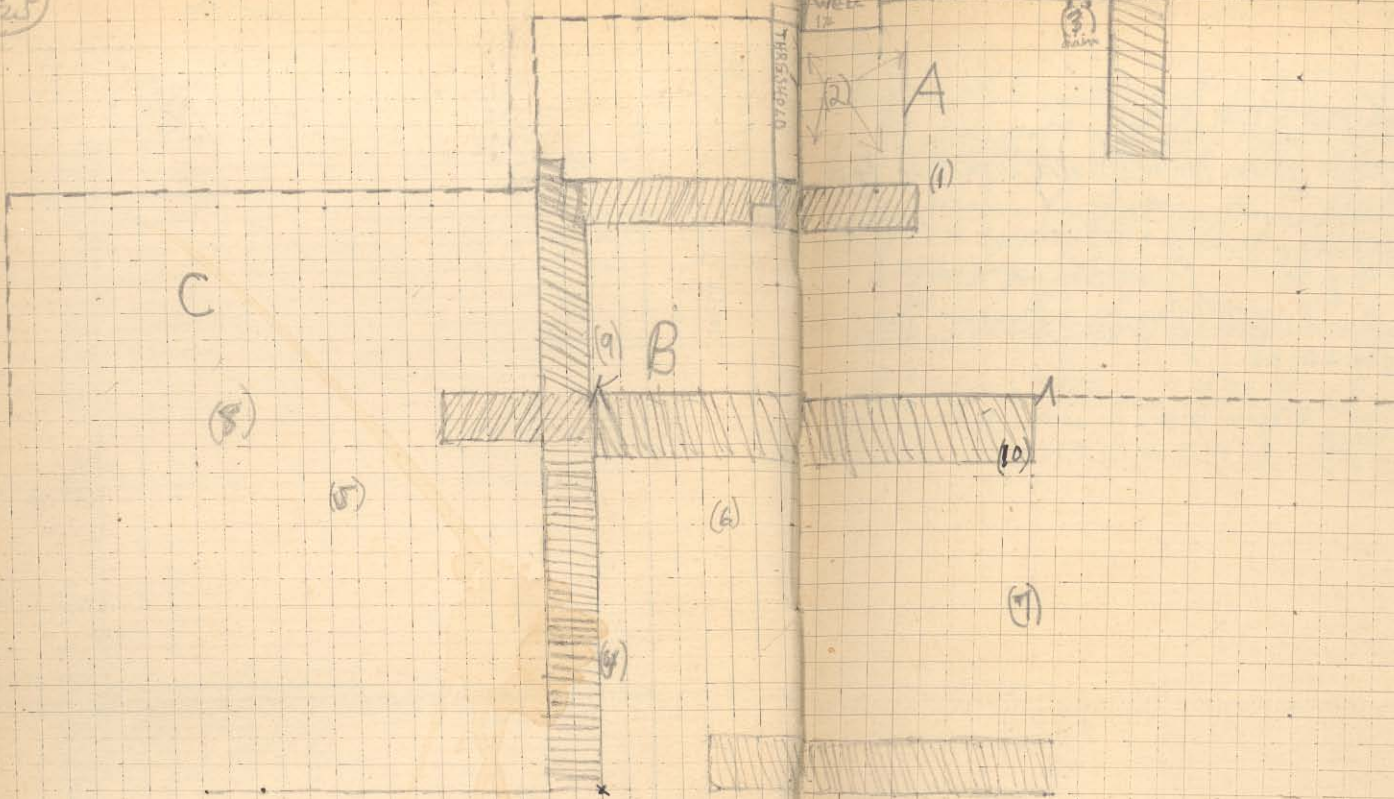
(6) Two sections of column in section called C on map pages 25-26. Also architrave block

(7) One ~~small~~ AE tack found in section "C".

← 1740

#7 trench 14.1





27) May 26, 1922 - Trench 14

(1) One piece of bronze in Miss Johnson's dig about 60 cm below level of top of steps leading to terrace wall and just to N of center of them.

\* (2) Good bronze coin from Merritt's dig - landed <sup>(46)</sup>  
near by workman

350-300

Began to dig to S as far as terrace wall

Quantities of red plaster found in section C  
of map on pages 25-26.

May 27, 1922 - Trench 14

(28)

6 men at work.

Digging in section C of map pages 25-26. Soil extremely soft with few pieces of tiles and practically no pottery. Many humble stones found.

(1) One AE coin found at spot marked (7) on map on pages 25-26 depth <sup>350</sup> - on level with top of wall K-A on map on pages 25-26. <sup>(35)</sup>

(2) One block with a hook clamp in it, found in section C.

(3) One terra cotta sea shell found on level with top of wall K-A and at foot of brick terrace wall to S of shell in line with figure (7) on map p. 25-26

29 May 29, 1922 - Trench 14  
Five to six men at work

- (1) One AE coin (paw) found at point indicated by no (5) on map pages 25-26. Depth from level of top of weather of wall K-1 25 cm.



(390)

- (2) One bronze nail found in earth from trench 14

May 30, 1922 - Trench 14  
7 men at work

(80)

Quantity of roof tiles found to ~~west~~ south of wall K-1 and between the wall and big terrace wall in extreme south of trench 14. Depth of tiles from top surface of the wall K-1 is 40 cm.

- (1) Coin (AE) found at point indicated by no (6) on map pages 25-26 at depth of 40 cm from top of wall K-1.



(216)

Carbonized wood and many tiles found in area to N of big terrace wall

- (2) Bronze pin found near foot of big terrace wall in trench 14
- (3) One AE coin found at point (7) on map p. 25-26 depth from top of wall K-1 40 cm. (276)
- (4) Several loom weights and few pieces of pottery from trench 14
- (5) Found gear point indicated by (8) on map p. 25-26 a stone bowl (1) ball

May 31, 1922

Five bags at work in trench 14

- (1) One Greek lamp found near level of floor at point indicated by (9) on map p 25-26.
- (2) One small bowling (?) ball on floor at point indicated by (8)
- (3) Two bronze coins found at point (10) on map pages 25-26. Depth from top of wall K-1 60cm. 54  
55
- (4) One AE coin of wire found on threshold near no 13 at depth of 67 cm from top wall K-1
- (5) One small jar found at W end of terrace wall in trench 14 at depth of 1.5 m from the top of the terrace wall.
- (6) One Greek lamp found at point (8) on floor.

Two pictures of S. part of trench 14 by

Blegen

no 3 from W

no 3 from E

C106

C107

June 1, 1922

- (1) One AE coin found by me in trench 14 in front of large threshold from paved room where column was found - 80 cm on paved floor.

- 350-300 B-C



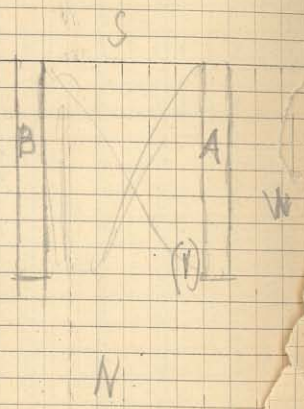
33)

June 12, 1922  
 in charge of Merritt's trenches

- (1) One A Boom found at Nord of furthest west wall in Merritt's section
- (2) One PE coin found ~~in same place as coin~~ ~~found~~ at north end of wall next to furthest west wall in Merritt's section.
- (3) Lead weight with "TT" on it found to north of third large room E from western part of Merritt's section. at depth of 2 meters

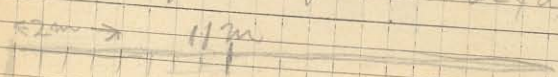
Osman Effendis

213  
 171  
 455



20 yomi dev ne pa Sci = zaman yok  
 30 otong  
 40 kirk  
 50 eli  
 60 atmish  
 70 yetmiş  
 80 keskin  
 90 dogan  
 100 yong  
 1000 bin

cherah = face  
 soth = cold  
 syak = hot  
 tash = stone  
 keramit = pottery  
 toprak = dirt  
 yonin = to narrow  
 bugun = to day  
 kuzir  
 tunda s omä = afternoon  
 yarash-yarash = every, every

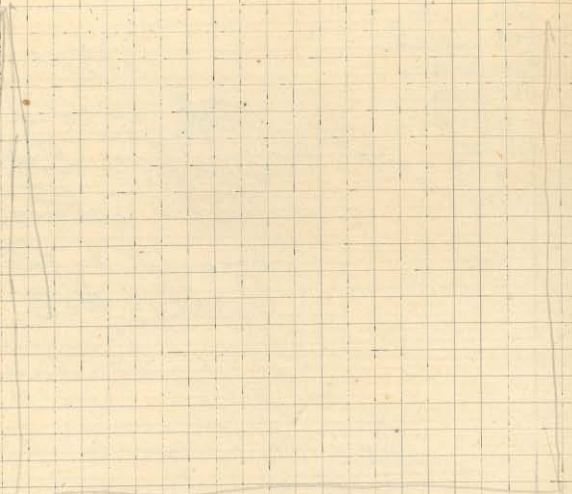


yokard = aravis  
 aspid = katw  
 yalimis = moyo  
 karda = akomn  
 shard = mesa  
 emlah = egor  
 delga = kole  
 belqima = perhaps

Trench 119

H

W

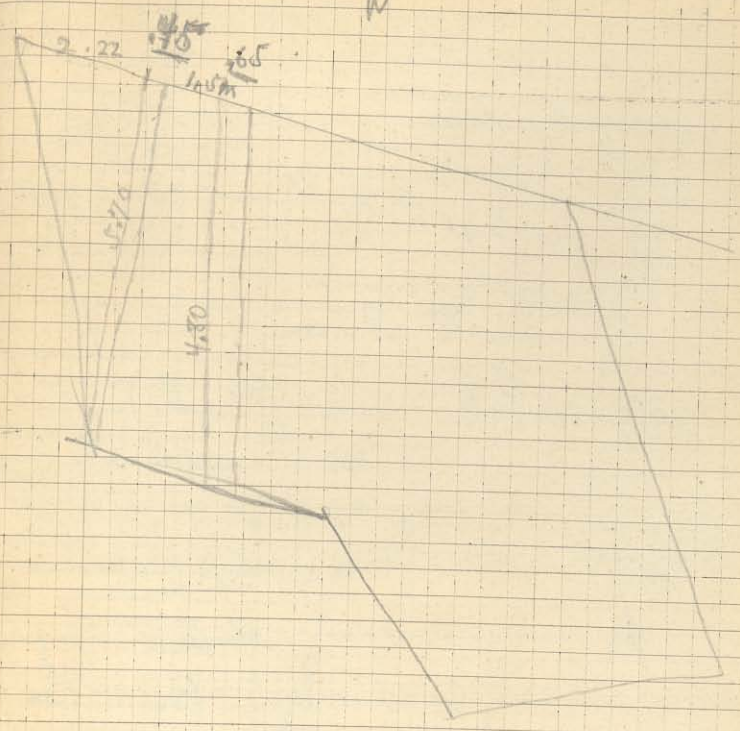


10.08 m

S.



N



2.22

1.70

1.50

1.50

1.30

W

16 May 2  
 A = one bronze coin } depth } near corner of ~~water~~  
 second bronze coin } 30 cm } K

B piece of colored glass

C = silver coin

wall about 6.5" thick

D = terra cotta canal  
 depth 1.05 m

youwarlak = coin (Turk.)



Antard bronze weight

12

1st coin 2 gms.  
 heavy

Zambeli  
 - basket

found 2-30 cm from  
 lat 2 coin 40 cm wall

4.1	11	2	5	16	13
1.8	11	10	14	64	52
13.3					

Extension trench 13

5.40 m to W. from N.W. corner of 13

