

ITH-Box_04-Journal-06

IDA T. HILL

ITALY, 1913 - 5 NOTEBOOKS

ITALY + GREECE, 1921 ~~4~~
(2 NOTEBOOKS)

GREECE, 1923 (3 NOTEBOOKS)

ITALY, 1923 (2 NOTEBOOKS)

(TRAVEL + MUSEUM
NOTES)

I. C. THALLON
VASSAR COLLEGE

*Tough Ripper
Ms. USA*

Museums in Italy

1913

I. C. Thallon

Contents.

1. Bologna, Mus. Civico

Bologna, Mus. Ciseco (July 23, 1913)
La Baia. (There are additional.)

Vestibule.

Models of Etr. tombs (roofed w. glass)

1) To L. Size not $6\frac{1}{2} \times 3$ inside. Rec. walls
 of large pebble-cobbles in clayey mud,
 thickness 12-16 in. (how much ext.?)

Skeleton, arms, legs, part of skull, looks as
 if laid out flat.

2) To R. A little shorter, thicker walls -
 Skel. unexcavated (extended), pottery fragments,
 common ware, round gips w. handles,
 Iron ring? art 5 in. diam., bracelet?

3. Roman monuments include:

(a) Tombstones w. portrait-head in Paris,
 usual types, mostly freedmen. Good ex.

to r. of court door. Chests in 3 tiers of 2
(family Alerius Stephanus) m. f., 2 top, 29.

b. Large pulent, c. 3 ft. inside, 8 in.
thick, 2 1/2 high (March 112). Apollini Gemis
que Augusti Caesaris / L. Apusulenus L. L.
Eros Magister Pulent? / Pulent Laurus.
Lullus well painted.

c. Other sep. dedicat. to wives, mothers,
etc, or by guilds to patron; to Ulpia
Psyche faithful wife, etc.

d. (Entrance wall). Tall one, 8 ft, pilas-
ters, pediment w. gorgon, lions as acrot
pine on top, to d. Thamil. Cords cent.
of 21 leg., trap. eq. etc. Tells sign of lot.

e. (to c.) Damaged one w. man w. a
lot of pigs; to r. of door has bucket
or sword?

f. Large one (D). 3 standing figs C. Corne-
lius, Fullonia Cornelia C. L. Herminia

sa(?) L. L. officiosa C. L. Presca r.v. O.

(Too many to copy in detail, but these are good typical ex.)

Antiquarium (upstairs).

Room I. (1) Centre case. D

Large flower pot w. knobs (5ft. high?) from Castelfranco. Frag. w. spiral wheel, swastika.

Pottery blk. & red, inc., knobs, etc. crescent handles, bone, shells, shells extending from stone - bronze (Toscanello - Ipomoles).

Casellaccio, presso Imola, same type.

Top of case = Trebbo sui vie, crude pottery, br. spears, ulns, hairpins, fib., lace trappings, razors, swords, wheels, etc. Many bone (horn) pecks, etc. Millstones flat, w. round ball for grinding

Toscanello (but village) - Part 379, mixed Ten* N

C - Part 373, Comb. T & N

Dev. Br. A - Part 376

(2) Case on end wall. E, F

Rastellino, Cuspellano, Umenara & Palafitte, typical finds, pottery & bones. Cin. urns from Cusp. chiefly 1 handled.

(3) Side wall. B & C

Fame, pottery, bones, carbonized fruits. (No use trying for details - Fam pal - Bal. Case of fine br. cells from Rocca di Badolo)

Adjoining room.


fragments of wood piles (Lac Bourget)
Model of Sard. Nuraghi.


Room II (around wall from n.e.)

4 cases from Villanova, Arena del Sole (n. of Bal.)

urns, br. bracelets, rings, fib, pillels, pins, horse etc, a few knives, a few

It now contains compar. mats from various places

small iron obj. T.C. model of shield
incised in conc. rings. Bottom piece
Arenale, tripod & bowl, knives, fib. etc.
Mercangia, Arenu, Arenu del S, all together.
Some cells very broad at base, also 
almost like bell, handles, jewelry, neck-
laces shell & stones, beads.


Binacci (in opp. corner, several cases).
Urns, chiefly w. lids, painted geom.
dec. bronze urn, wide cells, bits, minia-
ture shields pt. center (part. orn. on bases)
bits w. horses at each end of cross pieces,
rings, fib (var. types) large plate rec. br.
Obj. w. pendants (see Martha's illust.)
 popular shape, beads, x-bow.

(On whole should say a very small
:: of weapons).


Dennis

15

E wall (cont).

Chiefly tombstones,  shape.

Dec. 1 gem. diadema (br. & blk), crude
moss, narrow r. spear, 2 animals, 2 cich
shell-pieces - Some marked Vil. some Ch.
Low flat relief (see Lannoni & Martini)

M3 use of ruins: plants, etc. one:
anthrop.  Noah's ark style -

One large spherical obj (not flat). Thicker
over low dec. on edge also.

W wall.

More of same style, some in horiz. zones,
larger field plan dispers of space badly.

Cont. of work near Fredis Battistini =
Late r.f. casket, symbols; frag. very poor
cylind, small fruit-disk vase, 2 fine br.
handles, 1 staminal, 1 shallow bowl w. ring
handles, 1 candle, small acrobate w. height
on top, br. pitcher, large br. amph, large

h. ditula. B. Obj. very fine.

Model of Juan w. contr. skull on l. side.

Center case

Sin. Obj. in tr. & t.c., some wire, many
h. ~~travels~~^{buckets} or covers. Some wire strands or
knives. Much inc. pottery & t.c. copies
of h. things

Room XI. (XII)

Found covers walls of whole room, all types
of cells (in vts.), mabros, jewelry. In center
case: lumps of bronze, large & small.

Room X

S. wall in cor. has place for excor. Sites
(I, II) Cem III, Campo degli Spedali IV, V,
& a series of pictures of the fronts of h.
are rect. or round, sep. or crem.

Case A (center). Binacci older, 60-80
urns, much br., swords slender, handles
with hilts. T.C. } very plentiful (3000s).

Wall case opp. (S) - Ben. pottery.

WB animal vases, stag, horse rider
on its back. ∴ double anim. Large br.
urns & vases, little tables.

Case (west). Ben. later. More br. urns &
buckets, also more elaborate.

Long cases O-T, on N. wall w. pottery,
chiefly v. urns, small cups etc.

Inside side. Many model groups
marked etc. (Labels in cases O-T but
cases not properly marked).

Sep. case near entrance (1909-10 etc.) 2
late s.f. crates, one an imit., other poor etc.
or copy, cylixes.

Octagonal case - Stodello Centro, many
br. cistae & buckets, shields,

Arnaldi.

713 cups w. queer handles ends in
 little flat thing to rest on. Br. ribbed buckets
 & pails, flower pot shapes, fibulae -

Case near window. Large volute crater,
 Iliad scene?

Next case., also Arn. Large ribbed
 (2) many big craters underneath fr. Etr.
 (Pratio di Lucca).

Sep. window case, br. zone one (cf. Martha)
 Next case Certosa, ribbed buckets, large iron
 nails; above = r.f. cylixes all periods,
 mostly mediocre.

Next c. Certosa, r.f. cyl. & glass bottles above.
 Below = br. pitchers, pails, strainers, ladles etc.

Case 4. Cand. has 5 arms ending in
 lotus, woman & child (Aph. & Eros), standing
 on top.

Wall case (fr. corner to passage) full of pottery

mostly r.f. craters, a few cyl., remains of 2 br. shields, a few cand. Same in several cases L, + some stamens + lily thro. - Then some b.f. amph. + a few greyish brach. M has 2 Pan. amph. in v. br. buckets + 1 amph. + a few br. vessels.

O begins Vill. types again to Arnaldi.

Room vi. Greek.

Case B, cyclic 2 - Codrus schale
 next case, Sappho type, girl brings lyre
 + pipes.

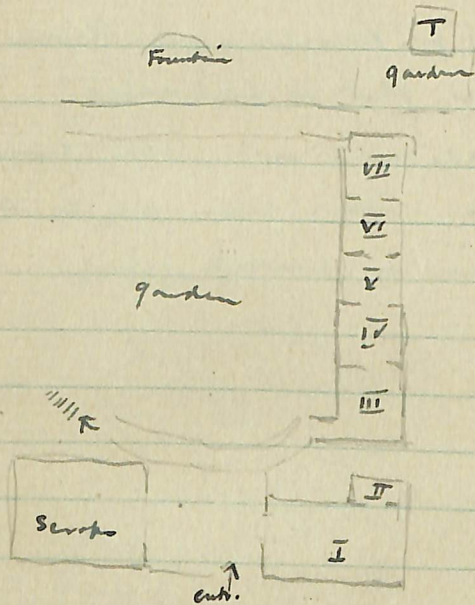
Room viii. Etr.

Prob. many say. Etr. are Italian -
 Spectacle braches, 2 hut urns (lower one
 large + flat), look like casts, canopi,
 mirrors, good case of br. implements,
 furniture, 12.

Case opp. entrance credits many to
Vill. (fr. Verucchio near Rimini, 1894).

Burial flat or entrance.

T.B. pediment-int. Cells carry strong
shields. Above like myth. scene -
3 victories in central group.



Villa of Pope Julius.

(new arrangement)

Ground floor to R.

I. Sala Barberini, fr. Praeneste

Case 1. Cista, mirrors, cista w. their
cut work.

Case A. Very fine cista, Apollo or Marsyas,
w. Artemis or other woman. Fine Cupid or
Psyche on top, she has not butterfly
wings, but like his. He holds alab. in
l.h. & she touches it, she has braids
on l. wrist.

Iron box panels, armed figs.

Mirror cases, relief dec. & some
figurines from mirror cases @ Rome.

① Warrior singing, woman by hair (like what?)

Wooden powder & paint-box in shape
of flat-disk, lid pivots; another w.
calf lying down; wooden foot w. sandal;

incense burners of wood; pink pills of brass.

Strigils n. pj. at end of handles (1) Aphr?

6/4 pmt.

Smal br. figurine n. horn of plenty,
another horn, crown. Sat p. dar.

Gold necklace, heavy, round flexible,
pendant = head of Achelors (exquisite).

Busts of glass, all colors, bottles in cat. glass.

Cista, alt. 9 in. h., 6 broad 13 thick; hoop
feet, pair of swans above, giffers in
corners, acrobas on top. Fine Etr. work.

Each side n. pair of chairs. Lapped
over to make seam at joint. Toilet-
pew, winged woman n. mirror.

Belt, heavy bead necklaces, combs,
Oenot-bottles of alab.

Case 2. T.C. figurines, heads,
arch, votive.

Case B. Buttons, ivory, glass bottles
etc. like A.

3 cistae. Top of (1) Man & woman w. Silenus.
bottom. (2) Two youths, arms around
shoulders (vic. fine scene w. Cent.)
(3) Two carrying body of child, all ⁱⁿ dentils.
(vic. Judy. f. Paris).

Case 3. Frag. of shield, large bowls, etc.

Case 4. Chiefly ivory, horn, walrus,
little animals, horse, ^{or} goats, hand & arm -
cups, stages - buckets.

Gold jewelry, thin frag; huge handle
3 in. wide, w. dragons & sphinxes in 4
rows.

Long Silenus masks, silver paterae,
cups & pithos (badly damaged).

Below: long tray on wheels, over 3 ft.,
♀ ♀ in rows on edge.

FROM
CLARKE & DAVIES,
36 & 38, MUSEUM ST.,
LONDON, W.C.