

ITH-Box\_04-Journal-07

Italy, 1913

Museums

I. C. Thallon

I. C. THALLON  
VASSAR COLLEGE  
POUGHKEEPSIE  
NY, USA

Museums in Italy -

Bobigny Mus. Civico (July 23, 1913).

[See Band. There are additional].

Vestibule

Models of Etr. tombs (roofed with glass.)

<sup>2/3</sup> Size all  $6\frac{1}{2} \times 3$  inside - Rect. walls of large  
kitchen - adobe in clayey mud, thickness 10-15 in.  
(how much - rest?) Skeleton, arms, leg, part of skull  
looks as if laid out flat.

<sup>To right</sup>  
Cups & other objects, thicker walls.

Shel. remains (broken), pottery fragments, common  
ware, round jars or handles. Lining (?) at 5 in down  
back?


Roman mss. Inclusion

3 Tombstones or burial marks in pairs, used together  
mostly freedom. One to R. of court door my garden  
(charts in 3 tiers of 2 (family *Alvinius septimus*)  
my, roof, 2 gals

<sup>appear</sup>  
2 Large frontal, 5 ft. wide, 8 in thick, 2 1/2 ft high (Quark V. 12)  
Apollini Geminus Augustus Caesaris / L. Apuleius  
L. L. Ero Majorat Pison? Paterat Saurus  
Letters well painted.

3) Other rep. ded. to mins, mortars etc, or by guests  
to patron, to Ulfia Cayda great wife etc.

4) Tall one <sup>8 ft</sup> (certainly) plaster, ped. or frozen, lines as cent.  
line on top to 2 merid. cords cent. of 21 by, prof.  
eq. etc. Tells size of lot.

5) To ~~the~~ left of entrance, domed one w. narrow arch  
of bricks; 10 ft. of low base bucket  + sand?

6) Long one (D) 3 standing fig C. Cornelius. Fullon  
Cornelia - C. L. Hermia Cal. L. officiosa Ch Ponce  
N. V. O.

Too many to copy in detail, but there are  
good examples.

Antiq.

Room I center case.

Large floor pot or bowl (off top) <sup>Castellano</sup> frag. of Scholastic, sword,

pottery (sh. + red), inc. knobs etc., ancient handles, bone  
whisks, shells, etc. from dome - bronze (Toscanello Immobile)

Chalcois, brass data, some types -

Top of case = Trotto dei vie, cross table, bronze shears,  
cells, handles, feet, horse trotting, <sup>or other, white</sup> regards etc., many  
bone (horn) picks etc.!

7) Millstone flat, or round table for grinding

Case on east wall.

Rastellins, Cyprianus, known as / alipette, tylone  
finks, pottery - bones.

Cin. mms for Cos. chiefly w. one handle.

Fame (side wall) pottery, bones, carb. found

No one trying for details. From ped - 13a

Can find for cells from Poca di Bado

Adj. room -

Fragments of wood tiles (Loc Bouquet)

Model of Sand Mural

R. II (around nave from n - east). Bologna front  
#cases. from Villanova - Arena del Sole (n. of Pad)

Wares, br. beakets, rings, etc., filllets, pins, horse die, a  
a few small iron obj.  
from knives, TC model of shield incised in concent. rings.

Bottom of case Arenale, to find a bowl, knives, etc.

Neocambric, Arena del S., all together. Some cells  
very broad at base, also Salmon like bell., handles,  
jewelry, necklaces shell + stones, beads etc.

Benacci, in off corners, several cases.

Wares, chiefly w. lids, painted green die, bronze arm,  
mid cells, bits, miniature shields etc. central (prob.  
iron or horses), bits w. holes at each end for cross pins,  
rings, fish of various types, large flat rect. br. obj. w.  
beakets, other br. (see Marzotto) <sup>23</sup> popular,  
beads, whorls etc.

On whole should say a very small % of  
recofers

Rest of E. coast: chiefly tombstones, perhaps

Dec = 1 gem painted (brown black) cross incised, narrow  
w/plate, 2 am. nails, 2 circle shape fillers

Some are marked Vill., some Sch.

Some flat obelisk, resembling to celtic, see Zanussi.

Montalini. No use of orient plants etc.

One - another Archaeological style.

One - long spherical obj (not flat). Thicker ones have  
be. on side also.

W. Hall, more of same style, some in bronze zones,  
lower field often disposes of space badly.

Cont. of tomb near Prezio Battistini

Late r. of celtic, symbols, frog, very poor copies, small fruit-disk like  
vase, 2 fine br. ladles, intravase, 1 chalice bowl w. ring handles,  
1 candle, small att like w. night on top, br. pitted P, large br. amph  
large br. ribbed - br. obj. very fine

Model of gran w. conf. shell, in celtic side.

Center case.

Rim. obj. in br. etc. Some iron, many bronze beakets  
w. cases - Some iron swords, & knives  
much in cases notes + r.c. exhibits <sup>not</sup> bronze things

Room XI. Hand carved rails of white wood, 12 by 12 cells,  
descript. & thro. necks, girdling - in center case large  
+ large, large & small

Room XII (Rather queer that this place does not show rails)  
S. hall in cov. has plans of cov. Sides (I, II) am III  
Comp. arch of Giddi (I) Then a series of pictures of the  
trunk which are rect. or round, sep. or comb.

Case A (upper) Benari ident; 60-80 rows, much br,  
arr. shd. fronted with hilt TC (By, kept in (sp.))  
Wear case sp<sup>s</sup> - Ben posterior - W's animal case at top, &  
have rider on its back & double arm. Large br. many  
row, like tables

Case next Ben. later. Some large of arms & brackets  
also more slat.

Long cases O-T (many) on N wall with plates, chiefly  
V. rows, small cups etc.

Many model frames on window side, makes Etr.  
Labels in cases OK but cases not properly marked

Sp. case near entrance (1909-10 etc) 2 lat. of cells, on  
w. row, other lat. CE or city exhibits etc.

Octag. case Stradella Centosa, many br. of distal or  
brackets, & inc. to. shells etc.

Arnaldi.

W's cups or green handles & (J) ends in little flat thin  
to rest on - Br. rubbed brackets & pairs plates for (shells)  
Case near window large white cells, shd. case, large  
or br, etc.

Next case also Arnaldi. Large in that

② Many big cells work underneath from Etr. sets <sup>Prague</sup> <sup>to</sup> <sup>the</sup> <sup>case</sup>  
Window case, br. good one (Martha)

Next case Centosa, with brackets, large iron nails,  
above - r.f. exhibits, all kinds, mostly mediocre.  
Next case Centosa, sp. cyl. & glass bottles above  
Bottom of case = br. pitchers, part, strainers,  
cups etc.

Case H. Card. has 5 arms hanging in letters, Roman  
- child (Lth. & 400) standing on top.

Wall case for lower entrance free of pollen, mostly  
2 of. *Volucris* - a few *Cyprina*, *Urosalpinx*, a few  
sand. Some in animal cases marked L. - some  
*Stammia* - *Chrysis*. Then some *h.f. anth.* - a few  
greyish bunch.

M has 2 Pan. eggs in nest br. buckets - 1 large -  
a few br. nests.

O begins Vill types again for Arnoldi.

Room VI *Grubbe*

Case B, upper 2 = *Codrus* *schile*.

Wall case, *Sedula* type, and big layer of pipes.

R. VIII *sch.*

Part. many so called *sch.* are *stabe*. Spectacle broods,  
2 hat *Uros* (down on large & flat) look like *curly*  
*canthi*, mirrors, good case of br. *infernata*, *furni*  
*huc* etc.

Case sp. entrance *schile* may be Vill. (from  
*Verucchio* near Rimini, 1894)

Burial flat - *contrecta*.

TC *bediment* int. *Celli* *car*, *obly*, *shil* etc.  
Above like *myel. scene* - 3 *victories* in  
central group.

Mrs. Arch. Florence. (Jul. 26, 27, 30)

Room I

Case I. Iron pipes + tools (No. 5. 1885/114 ft)

Chisel V, nails, small bronze obj. etc.

Iron cone. Pot w. tin dippers + spear

B. large oval shield of stone, on wall: curved heads

II (No. 85, p. 204) V. nails + furniture, large hilt

nails, artifacts on the roof; iron; pt. d. in  $\frac{200}{100}$

III, IV, V chisel V. etc. fine hilt. (i.e. found together)

Center case - large hilt, upper one incised, lower

frag. inside; lower one very large (2) pt. diam

hilt to the on roof.

Room II. Bronze.

Case I  
Tumbled obj, lamps, cauldrons, buckets, horse toadles

bells, bracelets, greaves, fibulae, fine dogs, near

hubs, shells + pebbles, dim. shen heads, scales

saddles, celt, + melted obj. - (found near hut)

C. II many of same sort.  fibulae

II (No. 202) Very rich in bracelets, chains, rings,



for female, ornaments or pierced work, little  
 other than things, pendants of all sorts, gold jewelry  
 special ring - facelets, a few very fine gold foil.

C. IV Rich bronze, WB small beads (ornaments), horses  
 on bits, large broad ended flat cells, fine exquisite  
 gold foil, Caldrons, helmet - pieces, [P]

V <sup>II</sup> families, helmet showing but slight, iron,  
 gold jewelry, beads etc.

A Tomb lid Duce - Very frag. beautiful relief  
 console, boat (Marta) its a cinerary chest, no  
 model below, little roof house -

B. Tomb D. / large Caldron full of smaller  
 bronze, Marc. helmet

C. Large Caldron w. rivets inside. (1st lot  
 from  
 in them.)

D. Bronze head jewelry -

Plum III. Case I, lot IV, bronze breast, deep to pectoral  
 on shoulders, animal mask, 2 gold diadems, gold beads

Case I. Too many details. WB w/ pendants  
 • Cor. in some tomb (Pietrera); long bronze axe  
 (bipennis)

helmet, 3 tentatively or chains like pot marks,  
(= conduct); Milisimian inc. flat broad (red) hair.  
Lith, ~~stone~~ <sup>stone</sup> chest on feet, many TC figures  
esp. grotesque animal bottles, (rabbits?)  
much iron.


Case A. No need to make details (see Milisimian)

W's much gold jewelry.

R IV. Case E W's, many helmets, t.c. figs;  
Vat: money, unit is later.

Case. Caskets set up on high trip  $\pm$  6ft in air.  
They look as if gipping, 3 or 4ft in circ.

Case IV W's flat trip in 4 wheels, ducks stand all  
around edge (there are 1900 but I think there  
is one like it in Marston).

R V. RF hydr. Medias style, fine br. pitch,  
patera, bucket, , cista or bag, leaning head  
on arms, mirrors etc.

Case later r.f. for set up, much bronze, iron  
thin knife or sword, coins etc.

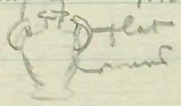

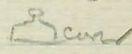
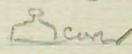
Case some fine fig. p.c. f.

Room VII. Case C, devel. of V. iron or relief (see Milisimian),  
W's. A medley, br, iron, bronze & lead, cast of various  
t.c., treechens disc etc.

W's relief of Barab, - bench opposite

Garden, all kinds of plants. (see later)

Upstairs. 1st floor Room VIII

Case I chiefly amph.; high headed style  
of pulcr.    

Case II. Buck. trap on sides, cont. a whole  
series - Heads for dec. very plain

VIII Bull-head (see M) apart - mouth. Above other  
- human heads, polo caps or bird on top.

Case A. 73146, fruit dish, 5 pyxides <sup>high</sup>  $\frac{1}{2}$  foot - kept  
top, open in center.

Garden. Tombs in Milani

A, G, I, H (int.), H (low), N, R (cuppi)

Room X, Cor. 2, 700 fine relief (see M)

Obj. = 8 pointed stars

Cor. 2 769 like orider bird cage



IV 790 art. 1 ft diam, center depression 5 in, w. low

9: slightly smaller. Below: round obj (6 in)

row of relief bosses, circle + in center = stiff  
palmette upside down like shell.

E 70992 A zones, mixed, no potens, much  
armor, shield, mitre etc. Fine cells.

72756

VI helmets, rare types. Deye like 1237

③ round + slight rim, knob on top clear plate

Other obj - hooks, straps, solid horse shoe  
covers

R. XI. (Chimant) Case A. Very fine remains.

Left arm w. plating, dagger, long twisted obj ③

plate + cross piece of brigs, top + back of left hand, right  
shoulder, r. hand, l. foot, parts of shoes or boots,

large crescent, piece of dagger, 2 horse ears, a  
nail or scepter

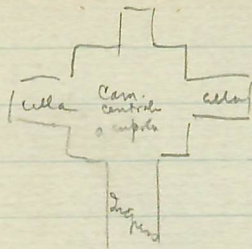
Case B. No. of Kisten f 7275. Difficult to find  
 this, am. number acc. to subj, in right.


Case III. 1st hollow, 500 kg, length

Case IV. 7943 Cles, Jovis in round, in relief in  
 flat cut-out.

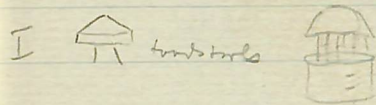
Room XVII. Holms. Int. portrait heads around  
 room Soph, Homer, Antea, Ti, Faustina,  
 Livia (fine head type)

R. XVIII, Case of excellent replicas of Cretan  
 things, porcelain, H-T vase, night, etc.



F. was really rock cut facies here  
 H. at back = circular  for spring

Q = bench (couch) along 2 sides, 7 ft in w.  
 t.c. gips, false al. to bricks, tiles, etc.



XIX Small temple w. B. stupa.

XXI Floor. Opp. entrance: map of R. Louisa  
 Top of entrance piece of red wall, floor with  
 above down to brick pavement - This is the  
 emphasis. (p. 274)

b. Has blue tiles on walls (like fresco)

a. Excellent ex. of hyp. & mosaic pavements.

On walls: frag of mosaics, col. marks  
 for molding & friezes, brick pavements  
 Pithos or bricks & tiles

XXII

Walls central area in room;

C. & little bronze boats (like silver ones in museum)

On wall: plan of Zeus (D. Froeschette 1895)

Shows theater, plan & monument.

S. Alex. - desk. T. of Bacchus.

Circuit of Str. wall & place called  
 Breca w. <sup>with</sup> <sub>n</sub> Pithos (No indic of  
 boats)

Baths (of) Calacalla (Aug. 11/13).

Frig. with steps down to pool. Then thro  
5 dressing rooms, stairs in some to upper  
floors.

Pal. (E). Fine mrs. pavement, green,  
yellow, white, marble, fish-scale pattern  
(rest of other. S) - (Rooms to N. of it, mrs.  
floor hinged in by fall of vaults.)  
Gallery around 2 ends & 1 side, mrs. floors  
to it, myth & Rom. subj, animals, sea  
houses, tridents etc. Stiles for gallery beams  
Frag. of frieze that runs under gallery,  
amovini, leaves, animals etc. on it.  
Cdo. subpater gilleries. Large open  
imp. bath, secret passage to floor  
above, doors show level of its floor.  
Nest room w. lat = Emp. bath - & steps  
Patricians baths behind, Rom. matrons  
above, also Vest V - priests.

Circ. room w. 4 showers, aqua.  $\uparrow$  atom.  
 Next " = kharmacia; then restaurant.  
 Outside in garden = race course, seats  
 for most opposite, incp. tribune behind  
 cold. (now dest.)

Cala. steam baths. Private baths at  
 side, hot air flues - Arist. private  
 baths at sides -

Building: symmetrically, axis thru  
 middle  $\frac{1}{2}$  for men,  $\frac{1}{2}$  for women.

Narrow steps to servants' quarters up  
 stairs. Below = furnace room  
 passage for hot air, flues in wall.

Enclaved pit - shows place where  
 can see underground passages -

Galleries all under stad. hall.

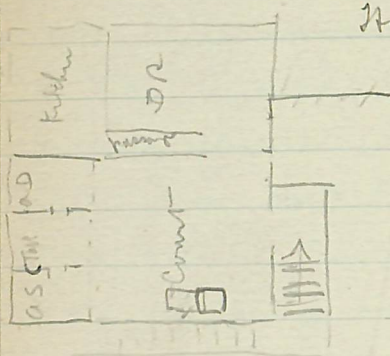
One to T. of Mithras under T. of Venus.

Tepid. has small, shallow bath  
 for children. Big swimming pool

galleries above to watch from -



## House of Livia



Popes = Julius Aug. (3); MP Domitiani Caesar.  
 Aug. aut. cura Eubychid. pro. fec. I Hyponus  
 Caesar II Sen; P. P. Ascennius Eros. <sup>Caranus</sup>

## Palat. (Aug. 13)

On way up from entrance fine view Lupa statue  
 behind Lib. Aug.

Under Colij. palace stairs - wall (p. 15)

Dom. his  
 Ala Sen. Panel dec. at end; above = Pq. panels  
 n. graceful relief figs. with sort of candle  
 thing for them

Al. D. Columns n. festoons, fruits & garlands,  
 little narrow yellow frieze dec. in beam, small  
 landscape etc. House & bridge etc. Camel, horse  
 riders, statues, figures etc.  
 From garland hangs bull's head, over a tragic  
 mask

Tric. (p. 13) Lower shaped col. n. heads of  
 victim animals, stag, boar etc. toply scene  
 desc. at top n. birds & pendants

Kitchen full of stuff, low vaulted room -  
 upper story, many small rooms & narrow  
 passages for servants

Old Central area -

W3 Cistern (in plan) or to show large circle  
 $\frac{1}{2}$  of it filled solid; can see overlapping  
 rocks

2 cisterns S of it. Here begins a great mass  
 of anc. tufa structures. Casak etc.  
 Pearl Cais

Lower down (CR) rock with little holes in  
 it for ear drums to sit up in. Cut in the  
 rock. So-called CR = sub-crown, many  
 like holes (10-12). Across from it = another  
 thick wall + places recalling old. Sub.  
 Nig. (ear drum etc.). Fossa bank  
 (cover broken in 1900) - Gt. tufa sheet  
 over it (on beams) can't bet. if really  
 belonged - 14 ft. tufa walls around  
 a grassy meadow (blow uncertain)  
 Fossa only one which cont. urns + obj  
 (now in 4 miles).

To S. we remain of rep. and Porto Alegre

Olympia - Aug 21, 1921.

W3 out of the way char., trace of Gold

Museum - cols, nos. evl. of column, 16.

with rotator slabs to protect mud wall,

Dump of Ad-hocum which is under temple

Döp. has built his back to pre-Myc. -

settled back. vs front.

x Pave by Dab. : round end, rough  
rotator marks, out stone round a round  
1 piece of bent (?) D so calls it.

B

Byz Church

Mixed joint, Run bricks, red cols

Numbering  
continues on the  
reverse side.

→

Fresco Museum -

Case to l. of entrance -

Samples of marble, i.e. white fragments,  
bits of mosaic (small)

Case opp door. 1-2

Iron axes, needles, br. mirrors, rings  
etc

Case 3. Br. beads, figurines, etc. Iron keys.

<sup>C.4</sup> Stone mill, glass bottle, wing lentils,

C.5 Br. ornaments, lamps, bells, handles etc

Case by door - all sorts of pottery, br. mirrors,  
amulets, R. lamps, coins

Central case (acc. 1863) large bronze furniture  
in relief

Passage way. Plan of case +.

Some Etr. br. stones, mirrors, pins, etc  
etc

Next room - Roman objects - Inoc. br. stones,  
frag. small marble reliefs. Fluted col.  
Part of bronze wall (copy of Col.)

Shirts, some cubicals + arch. frag.

Small room mat. Misc. pattern frag.,  
Am. alk, bits of fusco, Rom. heads etc.  
from bust

Meal room, Yaccs, a few bits, mostly ref  
+ late, buch. milit. dipl. etc.

Rather miscellaneous + no in die.  
of relativity.

Have found, 5 or 6, top of frame, down with

## Lefski - Doc. Room

No use looking B is right about names.  
many - besides they are all patched up  
with silly restrictions

Anal. Paris room. They are by far the best in it  
336 graceful low relief, 327 recalls Mont. relief  
ketch, though finer in action. 331 recalls Duke  
balustrade.


Marble relief by T. Zvesta.

Lighting of Anal. P. is bad, only from a  
skylight.

325 Amor & Psyche

333 Dying Baccante, low relief, low elongated  
group, col. thin group

326 Int. of drops, fringed pillows, etc. etc.

337 " " , n.b. cleavage <sup>out</sup> of  
windows; shelter out 

324 very good copy of Proc. type (see Vatican)

## Hadrian's villa

Ok. theater, 1 good Doric column standing  
at end of seats. Vaulted passage under it - 5 seen  
vault passage under stage - not seen design to  
lower level w. stone (mar.) pavement Large  
pieces of Dor. column w. bases heads.

Part of Dor. frieze w. man & animal - frag.  
Dor. columns which faced stage.

Porkchuck took picture of str cor.

Aedule (?) fine bases, 4. frag, marble  
pavement, plain & mosaic, 4 + designs, color  
hypos. Col. bases - late Dor. w. much detail

Stod. Litter left w. shape - 2 on floor of  
obis. Labyrinth of large vaulted rooms  
Small vaults. Fresco ceiling, white w. red &  
yellow bands in A. Some a basin with  
marble fountains. [Ceiling floor plan nearby].

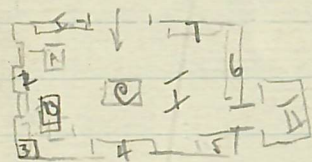
Major dimensions of vaults in large T.

Big domed room, left of fresco left.



MS Relief dec. on ceiling, shows ceiling like fern  
 vines, Net, 2 fig groups (often). Dated point 1763  
 Cryptok, remains of dec. in pink & blue - Albino is  
 fine court with sq. basin in center & a sunburst  
 from above

Basal fine mosaic fragments, uncharmed etc.  
 around court 1; Court 2 obs. charmed plates  
 P. Doro - 1st room at end - fine tess. fragments, mosaic  
 wall lining  
 Not fine arch. frag., bits of bowls, yellow etc.



Villa P. Jul (new arrangement)

[43]

Ground floor to R: Fala Barberini, fr. Baron

① Car in gambrose, extre, marros, extre in hair and  
mark.

1st cup. case, very fine cista, Apoll & Thangas, in  
Artemis & other monks, & fine winged extre  
 on top, she has not butterfly wings, but like  
loony box panels, arm for etc.

Micro cases, rel. dec. & some figures  
 from m. cases, ① Hercules ② marros angin  
woman by hair (like what?).

Wooden board - paint box in shape of flat-  
duck, lid piests; anatom in, calp figs  
horn; wooden foot in sandal; never  
burner of wood; pink fills of paint-  
Strigils in fig, at end of handles ("1) Apoll?

③ Youth - Small bronz figure in  
horn of plenty another horn, cornu. Sar Pa.  
Heavy gold necklace, round flexible,

(Capit. P. is held above in 1. h. & obs under  
it, she has haired in 1. mist)

pendant: head of Achelous (myrmidon)  
 Busts of glass all cols, bottles in  
 col. glass,  
 Cista art. 9 in high, 6 broad + 3 thick, on top  
 feet or pairs of arms above, griffins on corners  
 around on top. Fine Etr. work. Each side  
 with pair of chains. Dashed over to make  
 seam at front - Toilet scene, <sup>myrt</sup> woman w. mirror  
 below heavy lead necklaces, scarves, & several  
 bottles of alab.

1) Next case = T.C. figurines, heads, arch, etc.

2) Case II by window, busts, vases, glass bottles  
 etc. like I. 3 cistae. Top of 1) man + woman  
 w. Silenus hat. 2) Two gruebs arms around  
 shoulders, (inc. fine scene w. Cent.)

3) Two carrying body of 3<sup>d</sup>, all in armor.

Judgment of Paris (inc).

Corner case <sup>3</sup> frag of shield, large brads etc.

Case by window <sup>1</sup> opp. entrance - Chryseis, etc.

Caps Mus (Aug, 12)

Su B flus R. IV

IV window wall - Rel. relief landscape with  
 bathhouses etc. Su A 14

82 Arch. no evid. for name

V Busts 705 "Tud. Cels in taster's cloak. 22 Julia is  
 well numbered. Lucilla in armor, etc.

VI St. Cnid. type, with very badly restored nose  
 144 unmistakable

154 the most yet, low, as full as 50 why not lower the  
 up, good work of rest. removed - what do the cols  
 just belong to? 204 Venus - ? and types in a  
 med. clay

VII 89 etc. very small frag + small relief

VIII Cap Venus infinitely sub. to Leffigi - key well  
 placed to show surface of mouth.

Seda said to be by Timotheus (of Naxos draper)

horn, vase, liver amulet, bones beads,  
hand mirror, <sup>I</sup> cups, straight bucket  
Gold jewelry, thin frog; large bracelet 3  
in with mit dozens of spheres in 4 rows  
Long Silenus masks, Silver pelina  
cups + pitcher (both, damaged) -

Below - long tray in wheels, over 5 ft long  
♣ ♣ in rows in edge

(5) Case to side of window, cistae mirrors etc  
(not so good)

Long side <sup>(6)</sup> case, more cistae, mirrors, trays,  
dice, alabaster, stytes, needles, bodkins,  
whole set of surgical instruments

Below - iron mirrors - Cistae chiefly  
round, a few oval - Big mirror

Case next to it, more oval cistae + lots  
alabaster of pendants - Mirrors in 40-50 pieces  
bouquet etc.

Big central case = chair of bronze (old)

97  
Covers.

On stairs: fascos, vase, in case, in back.

Large 2<sup>d</sup> mirror from Corso arch. above of lamp

← (Hedraean - Bp rest: Tammara signs)

Brass vase (Pamaria 7th) then in B. mirror

Egypt. - but iron, small pottery, small Y vase

(Gold case black. tuffa, dotted + filled w. white)

Albano case, but, slab underneath in in

door, which meant in walls, something

black jar w. lids in rings + crescent



Bz. pibular

Opp. case T C fig long as life

Reliefs of arch, myth, architect, musician

etc. grounds etc

columns), huge lobes or, griffin, lotus or  
bird or heavy relief, gorgons heads a la  
Egyptian style - Big cone thing (cf  
Pachymenon), Sphinxes in pairs, cd. between  
above cone is lotus shaped part.  
Basal = birds, bacinis, gyps etc.

Thrift room from <sup>(small room)</sup> Tods 4-3d cent. Gorgons  
necklaces, one with 2 bullae + an oval  
central ornament or stone.

Heavy gold intaglio (recalls Nyc)  
necklace w. little pendants, little dress  
disc - Candelabra, tripod pan w. milk  
fig. as handle; pair of huge gold  
earrings, massive head for central orn.  
Polishing pan, beech. w. fresh mint for

Galleria (semi O around <sup>Entr. passage</sup> cent), very rough  
carc. - sea monsters (misc); fat men;

Conserv. Sc. (p. 260 B)

Esq. Venus just like union river etc.

Yeastful Here = usual Sc. type (Mud)

Corridor, frag. stat. boy, or Sandal (p. 260) of  
Attic gran relief.

Pa room statues or Camillus are relief in  
cliff

Muse. Room, to r. of Muses is Fosso like  
Tunnel (young woman)

2 age.  
Museum. Part. or sec. scene. Small  
Cin, ends, good paint,  
III room: <sup>cut</sup> Parc. from Cuera, to r. under  
window: wooden coffin; statue of woman  
swaddled baby across lap (looks like  
her in V. et)

Sep. case: Urtin bones for Cagli, made  
long thin mirrors, round or card board.  
small <sup>plumbeous</sup> heart (2 in) quite good, heart with  
diadem layer.

Another case, long dec. & round top,  
horses hearts, human hearts, br. whip  
bone, mirror cases, or. alloy of 1 lb.  
& woman, gorgon's head in middle,  
long helmet w. - buck head etc.

Case w. <sup>(most well kept of cases)</sup> frag. of large bronze, much  
relief, Urtin, others Chalchitra etc.  
Helmet & spears - Belar - bronze,  
& mix of Phidian or Gern. men

Muse. Part.

Trick no longer exists, is in Terme  
Stone age art in districts.

xxvii 1-3 - pale + ff = n, center - long burial  
xxviii a great many arrow heads for Vibrata valley  
1-4 (center = emb.)

xxix red. chiefly Cuneo (1-5), & 19 from Maderia  
(Cypric.) mostly pottery, grey inc. some or white  
filling (no need to stop, see Part)

30 - emb. (burnt burial in center) can't see  
part in hands; & near Vib. = blk. pottery (Cypric  
dates) - 4-6 rough stuff from Sardinia & Sic.  
Some good bones in inc. - Sic. has htd (center  
like Sardinia)

31 Br. Palafitte of Comb 1-13, very under & badly  
burnt blk. ware, some imp, lots of horn  
many cups or handles. Under window = skull  
of Br Prim. Lots of iron hearts.

32 On <sup>hand on case</sup> side walls = plans of Terr. Fort & other

Opp. case. <sup>23</sup> objects, bronze ring,  
helmet, large patina w. boss & relief

Large <sup>IV</sup> room f. Ital. terracottas.

Big <sup>sculpt</sup> statue (headless) prob. Apollo. drifting in  
veil; arch. dec.; hands, votive eyes, ears  
& other parts of body; fig. on horseback,  
in mit. pose imit. a. f. Italy; portraits  
heads. Archit. ante fixae, (paint) / Siding,  
Persia?; moulds for them - Range from  
6<sup>th</sup> archaic to 2<sup>d</sup> - Cornices, pediment  
relief, sometimes both. Parts of statues  
all sizes, color, good workmanship.

Next <sup>V</sup> room, Arch. frag (incl. plaques & cornices  
fr. T. of Apulo; big palmette acoth.  
Acrot. alluvial, arched man heeled  
cap, touches, Pers. art.

TC like acoth (in unbr. can)

Little head appearing by statues <sup>(masses  
over by  
mit)</sup>  
mosses, blue tube, Pers. cythos

Large B. terr. things, cells, knobs, then a  
cres. shaped handles, shells

Pictures f. etc. in Palma 1907,

33 Aeneida. No much horn, bone, wood  
brake clay pots

Anti. case P. w. Roma, many tiny cups, gal  
fibula, bronze lamp, a little iron - <sup>3 small</sup> shape pottery

34 Palq. from Venos, Garsa, Castello, most  
green but good bronze (of arch)

S. Italy 6-9, Polignona <sup>6-7</sup> (Matera) <sup>via</sup> black pottery,

some cres. some Vill. urns - 8-9 Foggia  
(Mantufredonia), lot inc. & punch, some pla.

like late range.

35 Rich lot f. br. & iron things from all over  
Italy. ornaments (16 in?) cells all cythos, harness  
disc, bracelets, hanging feet, leaf sword,  
broads on points & animal handles (Terme)  
discs w. bosses for 4-9 in in circ. (Alghero)

Sassari (Sardinia) case 10 armed man in w.

big gorgon, nice head, Apollo, nice  
fig., female with painted drapery  
(T. f. Turo Certe)

off-white, brick and heart,  
XVIII room (to E = Signia) Arch. to E  
look earlier, much paint, many things  
hests & vases

Top = Alatri. <sup>(upst. wall)</sup> cornice, rel. 10 in  
wide, procession or chorists, red horses  
or white wing, white wingless horses  
Below = model of st. building, deep portico  
double cella (from Velletri)

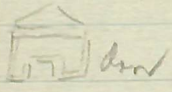
Mud. f. bediment of Tusc. temple (Name  
top shelf (place not given) head stage of)



XVII  
XVIII room = Satriano  
dent. or arms alarinto (m. - f) groups of  
myograph & Silenus, masks of Selenis,

big round shield, horned helmet. <sup>11-13</sup> helmet  
grows, spear, brooches, sword long  
"Ten." style, fib, and. axes, other animals,  
bullae, small amph (2 in high) from  
"var. places"

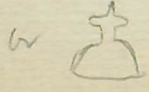
Sardinia in Tomatto, Prov. Sassari  
Cent. can = mod. } Nuraghe & Giants Tomb  
Velletri di Plana a Pae  
in Sannabus, for Capua



36 J. large, n. Italy long no. round types  
NB axes 4-5 Ets in Padua, amph. no handle  
but horn like, into side of round, det. rll  
and goals (fir?) Also some times in vic  
die. Found stands etc.

Cent = Colasena and from 3 x 2' or  
over, in room, + 3 other vases <sup>but any</sup>  
XVIII  
Velletri and small one (frag?) Coins, arms  
inside (1st top 30 km)

37 Cent st. head types, hut, vill, bunch  
Cornuto (central case) hut, r, helmets or



homed goddess, Gorg. in palm-leaf bowl,  
Arch. plate eyed woman,  
Cent. case, frag. of large striking fine  
statue; Arch. best Bluebeard style  
Side cases fine bronze, steatite, jet,  
haulets, dark amber on, lion necks,  
beech. & brass fastenings

Large cent. case, br. imports, etc.

Rome like amph, polished, inc. dec.  
like <sup>epigraphic</sup> ~~altars~~ in Cosens. smaller ma-  
trix.

Little t.c. temple dec. recall Delphi.

<sup>and some</sup>  
Upstairs, Corchiano, late, pottery mostly  
red slip of Ck.

Cic. corridor Cyro Farisco, nearest  
window = tall urn, fib. of br & gold,  
Cor. style

Other end - Regano. Flaminio, tiles,

38 Cent. St. 1-7 room of Rome, (later by)  
39 Cent. St. Lazio (a place from which  
there were many other rooms) There are  
fine Maris, C. G. G. G. for etc. mostly  
huts & pl. pottery, br., etc., some  
inc. N.B. a kind of relief into-lets.




egg-shaped vase, little <sup>or</sup> common

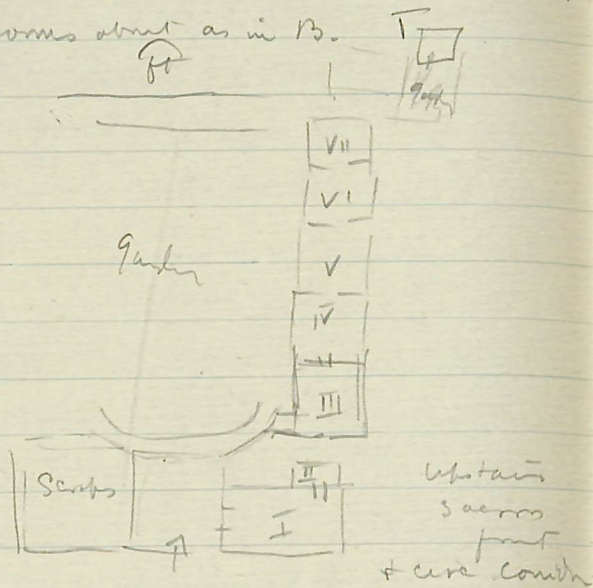
Center: Best Regano Corchiano, abundant  
huts, some in urns. Little tables <sup>or</sup> 3 legs  
1st in. etc. recent, part in sep. heat  
etc.

Handed basket has 2 little seated Egg. figs on  
each handle, part of altars. (4 huts up)  
Window case near has Tit. Pr., 3 huts,  
some gold frag. br. masonry, handle  
of large vessel in Pers. hut. Daggers of  
silver in iron sheaths, many little iron  
animals. Bot. shelf = large br. shield



late pottery;

Circ. room, side near window: other  
then usual br. etc. Above  on floor  
other rooms about as in B.





n. zone dec. Long relief - inc. carvings  
on entrance side case, mid. shelf.

Stand, blunted cone has horned animal on  
hind legs, heraldic pair. Smt f  
arches behind them; 2 pairs altogether.

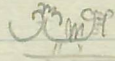
41 Cent. St. Maudes etc; S. St. 137/14

15- Rome prov. Car. Cast. etc. ftd.  
bucros, faint stands etc, buccinos, Feb  
19 broad br. guide (Capeva tm. xciv)

20 Libignano, fat black amph. w  
palmette + eme.  incant

21 H. Latin obj. from there  (incant  
in many  
places)

25 clay bowls, <sup>2</sup> cans w. inc. dec.

low. ant f palm  + etc  
other w. profans w. axes, spotted

27 Gr. bowl w. winged figures in bold  
relief

hmin = models for <sup>Otranto</sup>

No 4, Can't make much but heaps of stones  
in great structure.

No 3 tall thin member, slightly inclined to l.

" 1.

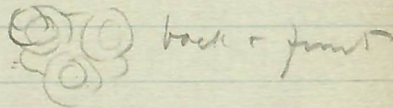


" 2 Down (socket. S. piece), has on  
4 supports 3 of which are comp. of  
3 stones, the other of 2.

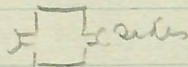
Viii 3, red plate w long tails fixed  
in white, centre case (Viii) 4 bronze  
lutes joining together. Br. Pj =  
arm protection for shooting?

Viii used in 1899

Cent. case off. base = by. business part  
for Aguda =



back + joint



base

43 Foreign

1 Hungary, bucket a cordon, small  
blk. rolling.

9-10 Bosnia & Croat. Blk. incised +  
dotted, & punched.

Central case, Cret. / not always marked  
from what part / chiefly common. Fine  
Chor & crude, blocky mix. 4 tablets  
from 14 Tr.

44 Cent = Cret. better but chiefly LM & 14

2 large plates with raised up like  
part in center.

Dec = 1 large shell; 2 leaf-like (like Ales)

20 shell, piece of piece w. ruffled skin  
but brown part.

42 Cent. case = Cret. too, better frag.  
of real Cam w. colors, some little  
cups. Better = heavy dotted.

Ride cases from Smith, Oculi etc. Fine  
Lake Drillers

Green: str. flakes + cores, <sup>cores</sup> but for  
fit with stone axes. + some red  
pitting from cores. chiefly handles +  
scraps. Also + some red bits from  
obsidian, perov fine

Lat. Mus. Etr (Aug 14)

I Same to <sup>43</sup>1. = pure or. charit. procession  
red col. of faces well pres. - 2nd ring ends  
head on nose, body another, feet another. Decided  
good color left. Lies on his back, neck loose  
bulla, cloak, amulets etc. Pallia on Form.  
Many excellent foot. herbs - 2 good brass heads

II Splendid lot of t.c. heads, some life sized, others  
a little smaller. - Cin. men used by the, generally  
heads of covers are too large for bodies.

56 very shiny one, figure with a battle, inf.  
Perg. - Artemis like fig. very vigorous.

III (Chryses since 15?) no cast or. but was  
106 & 110 there. 116 cut for fig. rough. no number  
(to a. fronton) model of round temple, also  
has 6 <sup>#</sup> in. cols, 6 thick with on roof  
height cut 3 1/2 ft, diam. abt 2, inc. on  
architrave

112 large head, many locks (thick) serpent

rust under chin, small wing at back of head  
 On floor to l. of mirror (no number) one of three  
 queer things on saw at Fiesde <sup>10</sup> ~~(by the)~~ ~~(by the)~~  
 Cross etc. above with it sort of barbed?

IV 1046 Very short fringe, sep. panels, alternating, (1)  
 head (Young Broad) vine wreath rest in leaf frame  
 like fully colored, on each side. Grotes with  
 horns & plenty, large flowers below (2) very  
 short strip of interlocking flowers, heads etc.  
 Heads, flowers etc. stand out in ground.

Dec. plaques like those in other cases. MB.  
 3 large ones on labors of Her (but, bydra, lion)  
 215 (an B) Adonis, realistic, elongated, much  
 faint remains. Body red, chest pinkish,  
 lower half of crown blue, forehead dark  
 red. On floor archaic Peg. more like So  
 5-6, more red, occ. feathers red, longer  
 feathers red or black on clay etc.  
 Beak part below, also on clay.

Shelves above - many heads all sizes & per.  
 TC in. wms gray paint -


Archit etc: antef, shell shape, helmets etc in  
 center, medusas, puzos, cornices. Stamped rel.  
 die. Healdie an. popular (298-300 etc)

Plaque die. - front flat low rel - high - on floor  
 by door = sup. figures, flat, very stiff -  
 long. Center = nuc. art. life size.

V (See center etc for notes) on floor are the 16E or  
 265 given by B in IV

VI BF + etc. mix

VII + VIII closed for repairs

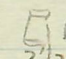


IX (Good qtr reconstruct, numbers + no etc, on shelf  
 around room + nr. walls) 313 Mass of Todis, fine  
 fig, crested helmet, insc on mid. flap of center  
 Biga , punched in sides. Heavy bronze, no  
 relief, teeth beading near top, br. ends w/ beads

© like on bracelet ends - Small fantastical  
 dial - attached to front. Shell vert. nr 10

of the (accessory), b. huts, like head etc  
 into, iron line, beaded band for plate and  
 hole pin gongmin on top.

No use trying to describe all the small &  
 household obj. etc. are very plentiful. Heaps  
 of cast, rare, gins, books, helmets, mirrors  
 etc. books w. handles, low bracers on 3  
 claw feet, weights (hum. heads etc.) pig which  
 must be a weight

Gold jewelry, partic fine, one set of fine  
 necklace w. pendants, 2 trinket rings, a pair.  
 Central case - Top shelf - silver books, cups  
 rare, engraved, inlaid & relief

Gold  like a match box, ,  3  
 think they are silver plated in gold.  
 Side to a. (when back to window) 2 massive  
 diadems, 10-3 of gold leaves made into  
 thick crown for front of head, 2 larger  
 leaves in more open pattern, boss in  
 middle.



3 more, varieties of leaves on opp side,  
 like pine on it end (7 alt. pla)

Bells: bells, plain + spruce, medals  
 w. pendants, fibulae, stick pins, earrings,  
 huge bracelet, buttons made by pulling  
 over coins, oval ornaments, necklaces set  
 with garnets, very delicate diadem w  
 flowers of gold, long + slab. earrings  
 + no end of ring with seals. Some  
 set from, others with oval.

On shelf near it. Beautiful mirrors  
 here + fine port. head with medals  
 198 cabinet by window, lots of vases that  
 incl. like dolls like the children.

Z, XI, XII all closed

Vaticana. Bija II.

(22) Number Artemis

III. 38 Soy. Diana, really 5<sup>th</sup> cent before  
part. unarm'd etc. (long hair)

Pils, 8. 81 Ana Paris, part with red men  
big, next to left end has short moustache,  
beard (thin hairs)

Br. Nuoro

24 Could there possibly be a young Pan as early?  
26A, Very bright later S.; 41 on A on middle to  
Oly. style (wiki) 44 Army. of Cap frag. in  
room in Huc. 71 great feeling they have their  
own legs. Behind not as firm as Cap. style  
81 has a mean look other than that. do not  
92 good legs but rather a stiff step, please  
remove head,

Chocor. 123 - 121 feet flat toes

294 - 293 close up of muscle markings

417 - 419 under they called Aug. with Quaker

Small worm at top of stairs  $\frac{7}{11}$  days of arrival

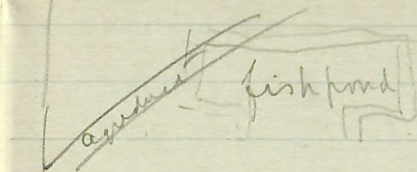
Bio. case Here. too hard on his body  
to move.

R VII 265 much better than the one in Oct.

VIII 295p large ugly red head, very long D

Small to make room - frag. Alice  
grow white, pink + above boy

halls 18 in



Garden

- dugress 50 paces

right about  
side to  
villa  
not mes  
of wall

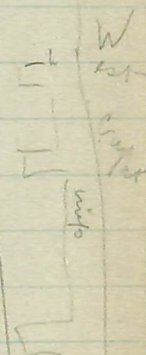
2) Bacter of time of Visps. added later on.  
but adjoined villa, not belong to it



Salops

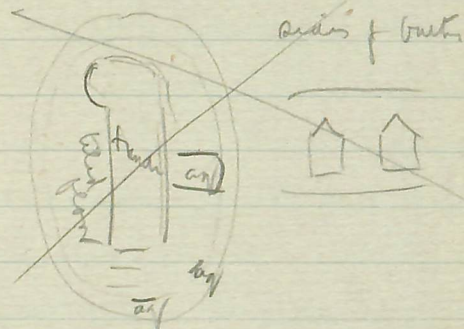
Ch...

agradant  
pop. it. villa from infirmary building  
vine + court.



Lines med church over bath  
Baths center.

Bath, oval, steps down, <sup>(this is med entrance)</sup> large apert  
smaller ones to let water in & out



Bath level art 4 ft. below platform  
over bath & under church was platform  
Trench cut thro' bath floor & under as ab.

Tiled w. tiles, hyps + furnace ady.  
w. floor. Small vestib. in front - 62

Back again to stairs. W crypt shows some  
fresco over op. set.

To W. are rem. of vesp. bank. An aqueduct  
under stairs of crypt supplied it.

Small deep pool with 7 stairs down to  
bottom, also 3 steps down to little  
platform on side

Large rooms built into by cross walls  
of later period. Small rooms. Long  
passage <sup>really corridor</sup> with apse at middle (W)  
ends in blunt angle W. Still an  
arch into furnace room

It may be <sup>12-15ft wide</sup> passage from steps of crypt  
runs E-W sep. garden from villa -  
See steps at end of each crypt & stairs in  
middle to garden.

At room opp. <sup>n</sup> end of E crypt has mosaic floor  
room = 9 ft x 6.

Mos. 8 pointed star (4x2) # white, yellow  
brown, blk

thin passage 9x3, ends in blank wall

2d room 10x13, mo: blk + white lines  
+ Δs incl but // lines

[There is a central corridor ending in sq.  
room behind room 1]

another passage to east end

3d room, blk + white, sq. sur. by brickwork <sup>in yellow</sup>

This room ends on same line as 1st passage

Next = atrium runs thro to east but <sup>app. as</sup> <sup>1st room</sup>

complexion 8x10ft?

to N. of abutment 2 rooms running as far as  
back hall, column in middle.

then a passage way

Back of cent. hall, rooms E of West passage  
- plan quarters, less fine mosaic (East & W rooms also =  
plan)

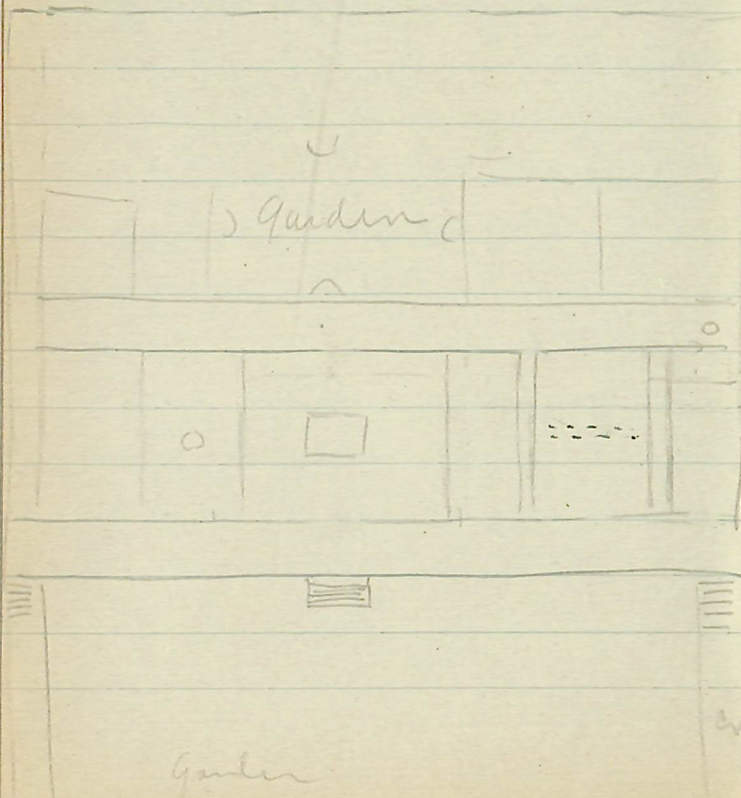
West wall of villa (Emt. cypri) preserved  
but later was built into by baths  
(Kipid.) of Vesp. 2 parts <sup>apart</sup> m + n, n  
hyp. floors. apart to west.

Adjoining m. n. are three parts of Vesp. bath

N. of central passage no remains of Hor.  
time, his was a garden & later a  
Nymph <sup>in 4 beds</sup> was built - after Anton. time

Room in abt. cent passage ends (E) had a  
column -

N. of cent passage, E end = 2 large rooms  
or most of them was a garden



Back wall can be followed all the way  
across to n. end. Garden came in center  
area to w. of that & to n. of center passage  
is to be near. further.