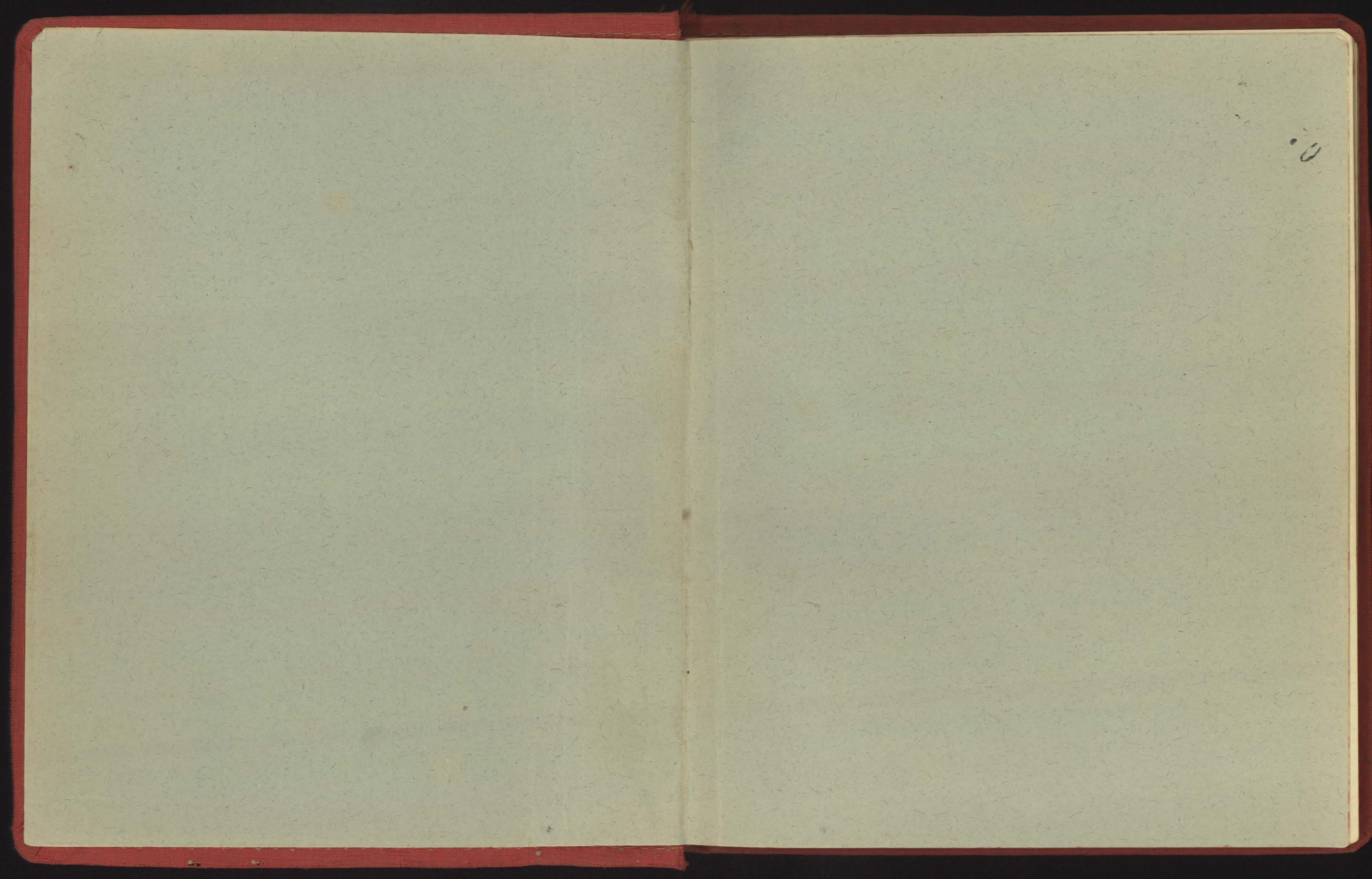


KP

Q



KPQ

Kephala cont from KPE

INDEX OF LOTS IN THIS BOOK
(for Gen Index of Kph. lots see KPE)

KF 1966

KF-143 p. 7

144 11

145 11

146 7

147 10

148 10

150 11

151 11

152 11

154 11

155 15

159 9

162 9

165 9

170 13

179 15

181 15

187 13

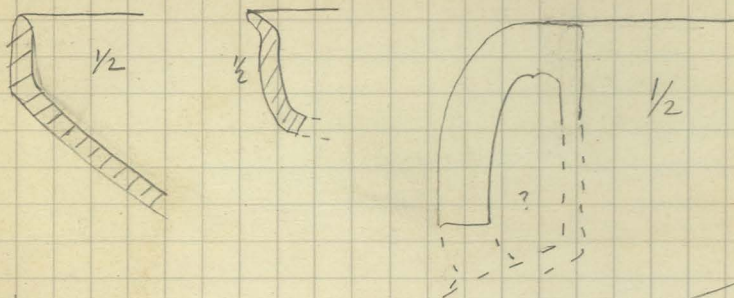
189 13

KF 1963

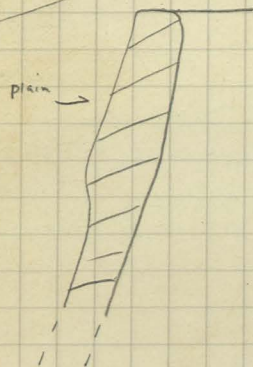
KF-118 17

124 17

146



143



KPh F upper Tr A 3 cont from KPE 7

KF-146

1/10 Tin

Red Coat. rim frag bowl (A2?)

Plastic. 2 frags rpe dec.

Plain. A4 rim app B base frag. of jug app.

other piece app.

22/VI/66

X, 129

ca 50% disc. 1966. 25% of remainder disc. 1969

KF-143

1/10 Tin

incised. frag of rim or top of scoop

with diagonals, another definite frag of top of scoop, rim frag with diagonals or chevrons

plain. C6 rim app

D3 frag coarse pan with pitted side, frag of furnished pan (?) app.

T-lug

22/VI/66

X,

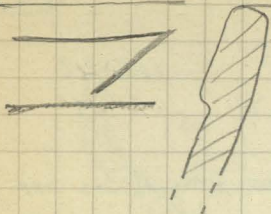
ca 50% disc. 1966. 25% of remainder disc. 1969

PB 1 sherd

one sherd used as polisher sent for inv

(162)

1/2



KPh Tr B

9

KF (165)

6.70/6.40 - 6.60/6.23

1 sherd disc 1966

X, 157

29/V/66

KF-162

7.10/6.50 - 6.70/6.40

1/5 tin

ca 1/4 disc '66

X, 157

26/V/66

Red Coat: 1 sherdIncised: rim C6 oppPlastic: 2 rpe.dec.Plain: usual types. A5 or 6 frag base at join to body

Knobbed strap hdl. frag large double lug.

1/8 disc, 1968

KF-159

1/6 Tin

ca 1/4 disc '66

cut 5

26/V/66

X, 153

Red Coat: 2 sherdsIncised: frag prob scoop back with diagonals, rim

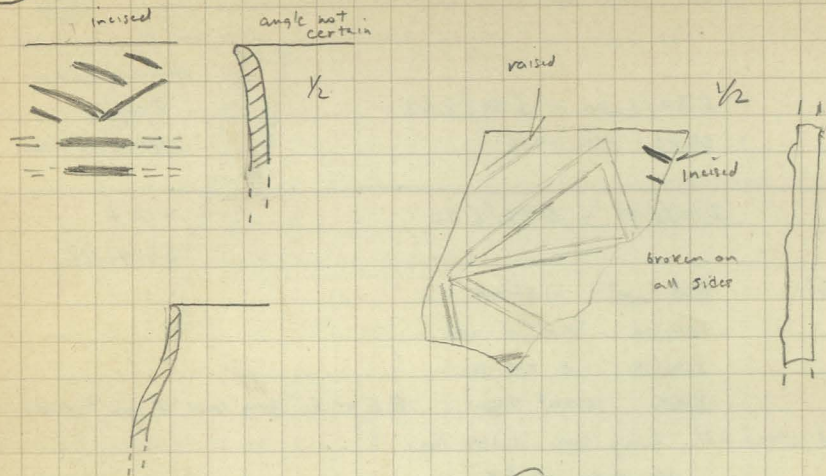
frag with diagonal, A5 or 6 frag base with 2 horizontal lines, rim with diagonal slash on top (A1?). Rim with multiple zig-zag outside. C6 frag like

hd in (162)

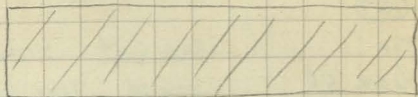
Plastic: 2+ rpe.dec.PB: 1 sherd parallel linesPlain: usual types. D1 1 frag strut

ca 40% disc, 1968

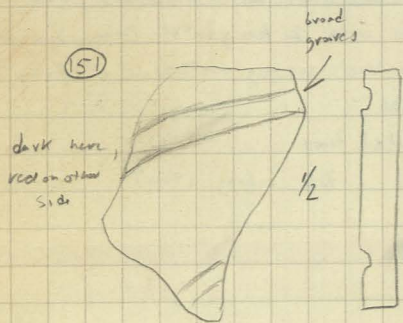
(150) etc.



(148) frag. broken on all sides



1/2 dark with traces of burnish on one side. other side red. 2 holes penetrate from red side but not all the way. deliberate?



KF-(148) Platform E of Tr B 23/VI/66
 1/2 Tin Plain few frags usual types X, 139
 frag of lge. brick or pm above
 1/3 kept. Comb with (151), 1968

KF-(147) as (148) few sherds added to surface material in field. X, 135

KF-(150) cut 4 X, 143 24/VI/66
 (145) " 3 X, 131 22/VI/66
 (144) " 2 " " "

Combined 1966. ca 50% disc. 1968

1/6 Tin Red Coat: A1 rim frag with red inside and out (or pedestal A5 or 6) cf. frag in Plastic

incised: rim frag opp. frags 2 scoop struts

Plastic dec: frag with raised Δs opp. frag of knob prob. from hdl.

Plain: usual types. 2 scoop struts - 1 scoop? D1
 D3 frag. crude pan with pierced rim C1 rim opp. large strap hdl.
 with strut (like that (145) etc?)

10% disc. 1968

F Upper. Graves 1966

Tr B. Grave XXXVII. no offerings

KF-(154) cut 3 25/VI/66
 2 hdl's. X, 149
 Plain few frags of usual types. 1 frag perhaps with Plastic vib ca 1/3 kept with (152), 1968

KF-(152) burial level 24/VI/66
 lge. hdl'ful X, 147

1 BA frag. stray? Plain few frags. A1 good rim frag, A 4 frag. ca 1/3 kept with (154), 1968

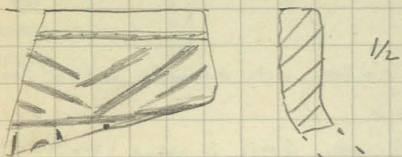
KF-(151) rim cover 24/VI/66
 2 hdl'fuls X, 143

incised or grooved. frag prob. scoop back, sherd opp

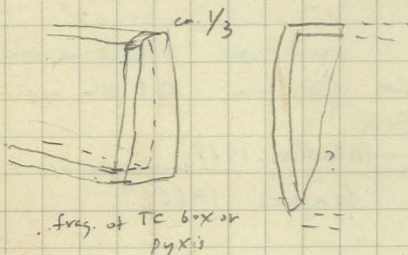
Plain few usual types ca 1/2 kept. Comb. with (148), 1968

(168)

grey-black with
red coat



1/2



frag. of TC box or
pyxis

TrA Grave XXXVIII Jar burial with in
TrA test no offerings

13

KF-170

Sm. hdful. 90% kept few shreds of usual types
comb. 1968

cut 2

30/VI/66

XXVI, 101

KF-168

2 hdfuls. 99% kept

cut 1

29/VI/66

X, 167

raised frag. of top of scoop (D1) with inc. and red
coat app. 1 sherd of another vessel - zig-zag or parallel line. Frag
large vessel with raised strip with diagonals.

Plain few frags usual types. one sherd app.

ca 40% disc. 1968

TrA Grave XXXX. Cist. beneath XXXIX. Small
called platform A. 1 offering (jasper scraper) mostly in TrA 2

KF-189

small hdful
99% kept nondescript. A few with traces of burnish.
All disc. 1968

burial level

6/VI/66

XXVI, 129

KF-187

Rem. stone from Plat. A
hdful mostly nondescript like (189) 1 sherd
99% kept with Red Coat.

6/VII/66

XXVI, 125

All disc. 1968

Tr A. Grave XXXIX. Cist grave above
XXXX offering- scoop vessel

KF-181 cut I - burial level 2/VII/66
hdful. All kept '66 few worn sherd, many may be from XXVI, 115
Scoop vessel Kph. 22. 2 prob. join and one left inside
for later addition. A 4 - 1 frag prob.
6 sherds kept - added to (179) rest disc. 1968

KF-179 rem platform B 4/VII/66
1/5 tin XXVI,
99% kept '66 Red Coat 1 sherd.
knives etc. 1 frag scoop strut. 1 frag
bone with mat imp
Plain frags used types. A1 rim frag
one frag pumice discarded 1970
6 sherds from (181) added. 50% disc. 1968
1 sherd " (155) "

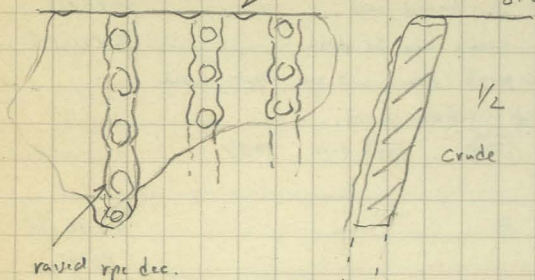
KF-155 'suspected grave' 25/V/66
hdful. X, 145
100 kept few sherds used typed. D3 frag rim of unburn pan
the latter added to (179) rest disc. 1968

Unstr. Surface, 1964

finger imp.

C 6

d. ca

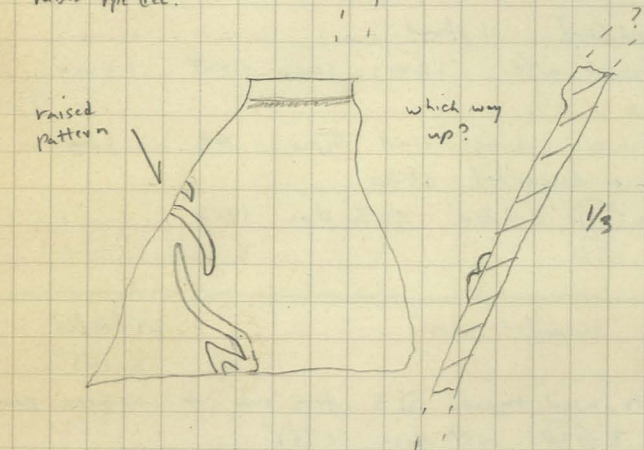


raised rim dec.

raised pattern

which way up?

1/3



Unstratified sherds and cleaning lots

17

Gen. Provenience

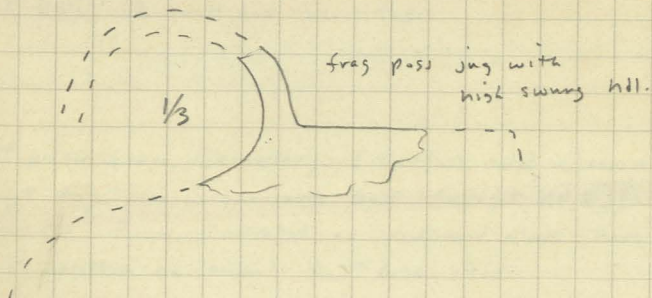
1961 1 large box. mostly usual types.
 1 frag incised rim, 1 incised scoop strut, 1 frag raised
 plastic pattern (cf frag in (150))
 1 sherd vitreous green glaze
 1 frag prob mid handle of water jar

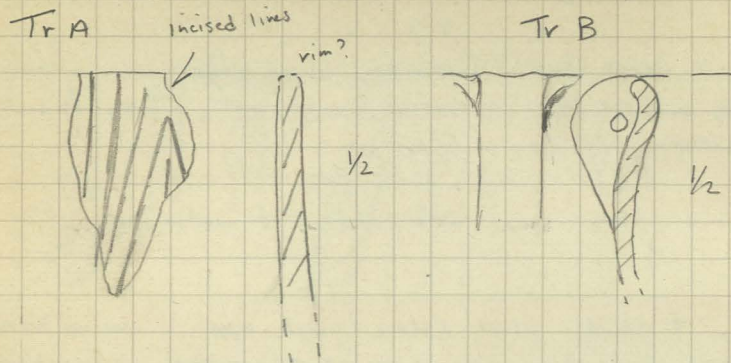
1964 9 sherds usual fabric incl opp.
 Best sherds from both years kept together in one box. Rest
 disc. 1968

Cemetery, 1963

KF-(118) 1 small box. usual types but incl 1 sherd
 pass. EH

KF-(124) usual types except 1 sherd pass BA (light coloured
 fabric) incl:





Unstr. cont

Cemetery, 1966 (upper)

Surface, Tr. A . . . 1 small box of usual types
incl. sherd opp.

Surface, Tr. B . . . 1/2 small box usual types incl hdl. opp

Cemetery 1964 of KF-139

Upper

KF-131 . . . non descript frags. all disc. 1968

KF-132 large box. Usual stuff incl. 1 C 6 rim with
grooves in multiple zig-zag, 1 mat imp on base (not meant
to be seen?)

KF-135 1/2 small box usual types.

Best pieces from Cemetery (Surface and cleaning lots, all years)
Kept together in one large box (except KF-139 which is kept
separate. Pieces illustrated or mentioned above have provenience or
lot written on them. Rest disc. 1968

Lower

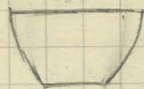
KF-130 } ca 1 sm box. Taken into account in final
133 } catalogue, 1969

(Final) Pottery Classification

A Bowls and Cups. 1 upright sides, 2 flaring, 3 S-curved



1



2 a



2 b



3

B Jugs. few frags only

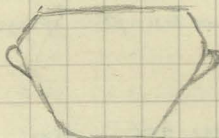
C Jars. 1. Small, 2 lge closed, 3. med-^{lge} squat open, 4 lge tall, open



1



2



3



4

D Misc. 1 scoops, 2 cyl. stand, 3 pans, 4 strainers, 5 lids

Other sherds

Red coated
Pattern-burnished
Incised and Grooved
with Plastic Decoration

} sherds which cannot
be assigned to shapes

Handles and lugs
Bases.

lugs: vertical, horizontal, crescent, double

On the Classification of Kephela Pottery

For Coleman Dissertation (based on pottery note book rather than the material itself) the pottery was foolishly divided first into decorative classes - Red coated, Pattern-burnished, Incised and grooved, with plastic decoration, other sherds - and then subdivided into shapes.

IN 1969 the pottery is being completely reviewed. All profile sherds have been kept over the years*. It has been possible to devise a scheme of classification based primarily on shape. Some changes have taken place in the shape classification from that of the dissertation and it should now fit the material better. N.B. The Dissertation schema was applied to the lots written up in 1968 (from KPE, p.165 to KPQ, p.19) this has now been superseded by the schema opposite.

* at least all large enough to give an indication of shape.

In catalogues no one sherd appears twice but it is possible that e.g. base in other sherds is from same pot as rim frags under shapes K7X.

Shapes: Pedestalled bowls prob. much more frequent than show in counts because of clipped ways of counting in rims vs juncture. All bowls with flaring lips pedestalled?

Notes on Pottery 1969

Area D

final catalogue is based on following lots:

KD-②③④⑤⑦⑪⑬⑰⑱⑲⑳㉔*

Notice is also taken of the following (mentioned as "Surface"):

KD-⑧ (big jar)

⑱ (incised jar)

An estimate was made on separate sheets of total quantity and total no. of each shape. This formed the basis for the catalogue (also on separate sheet). The best sherds were picked out and had their lot numbers written on them. Some of them will have profiles drawn, others will be photographed. Some good sherds put unmarked into general collection. The rest discarded.

* ⑱ not incl. because accid. combined with ①

Catalogue estimates of numbers based on a consideration of all material spread out on table not on artificial count: numbers are always a minimum.

Area LHouse D

Catalogue based on following Lots:

KL-27 26 25 27'67 28 23 22 19
20 16 17 9 8 10 24

House E

Catalogue based on following Lots:

KL-21 18 15 14 13 12
one sherd fr. KL-11

'Passage' between:

Catalogue based on following Lots:

KL-29 4 5 2 3

Catalogue estimates based on a consideration of all the material, not artificial count.

Details on separate sheets

G

E of well 2 W of well 2

	U	L	U	L
PB	✓	✓	✓	✓
RC		✓	✓	✓
INC.	✓	✓	✓	✓

Scoops

Area G

Deposits around Wall 2 all together

E. of wall 2	Lower str.	KG-③
	upper str.	②
W of wall 2	Lower str.	⑤ ⑩* ⑪
	mixed	⑦
	Safety	⑨
	upper	⑤ ⑥
	cleaning of well	⑫

Surface

E. of wall 2	①
W of wall 2	④

Gen. notes on Area G

Stratified deposits preserved because of mod. mundra?

Possible sequence: pass. wall w. of wall 2 + lower str.
 Wall 2 + upper str.
 Wall 1 and "Surface" something apart.

Dec. features in Lower strata

PB	- E of W of Wall 2
RC	- W of Wall 2, E of wall 2
Inc.	- E. " " "

* ⑩ Comb. by mistake with KF-③ only a few shreds noted here.

Area G cont

Deposits around Well 2

ca. 1 tin total (calculated on separate sheet)
of which 70-90% of fragments were from small vessels,
predominately bowls.

Shapes:

Fragments of rims of at least 40 small vessels including those mentioned under A2 and C1.

A 2: fragments of at least 28 rims, at least 15 of which are from bowls with angular shoulder and 7 of which were decorated inside with Pattern-burnishing. The burnished patterns so far as they can be distinguished are made up of parallel lines descending vertically or diagonally from the lip - but the fragments are small. One of the PB rims, from a bowl with angular shoulder has a rounded lug, horizontally pierced set just below the angle, another of the PB rims also angular has a small plastic knob set at angle. One rim otherwise undecorated has a groove on outside below lip.

A 2 b frags of at least 3 at join of body to pedestal

C 1: Small fragments of three rims, each with slightly up-turned lip, one with T-lug just below lip. Fragments of a small collar neck with red coating outside. Frag. prob. of small jar with ring base and incision in rectilinear pattern on body.

C 2: Fragments of three rims, one slightly thickened, one up-turned and one, probably from a collar neck, incised with multiple chevrons.

C 3 or C 4: Frags 2 rims, one with diag. slashes on lip, rpe dec beneath (8), one with horizontal lug, indented at intervals (9).

(both w. of well 2, lower) 29

D 1: Fragments from at least 5 incl. 1 frag of strut, 1 frag from join of body with handle with beginning of incised pattern on back, one large fragment of a handle, not incised, but with small plastic bump on inside, two small fragment of a handles with incised decoration, 3 frags prob of struts with flattened profiles.

(w of well 2, lower and upper strata)

D 3: fragments of at least 2 and probably more coarse pans with low walls. One frag. has a horizontal lug set inside near rim.

D 4: 1 fragment with flat profile, pierced at regular intervals. (w of well 2, upper stratum)

Other sherds

(w of well 2, Lower Str.)
found throughout the deposits though lost eggs w-lower

and Pattern-B.
Red coated; Fragments of several small vessels with red coating on one or both surfaces. At least two vessels had pattern-burnishing on the outer surface and red coating on the inner. A fragment of a third has parallel P-burnished stripes on the outside set on either side of a raised plastic strip with finger impressions and red coating on the inside. Another fragment decorated with PB alone has a delicate though simple spiridiform

(w of well 2, lower str.)

motive flanked by parallel lines (W of well 2, lower stratum)
Others fragments with PB have groups of parallel
lines meeting at various angles.

Incised or Grooved: 2 fragments probably from a rim with
SPS of diagonals within frames (W of well 2, upper stratum);
these may possibly be from the top part of a scoop
handle. One frag. of large vessel with crude grooving
preserving point of attachment of handle (W of well 2, lower
stratum). One frag. probably from a slightly thickened rim has
a design of multiple chevrons drawn with an instrument
with irregular point, probably a stick.

Frag vessel with disk base, sl. hollowed at vert. in on body,
with plastic decoration. Poss a murex pattern.

One plastic knob on pot wall, one fragment
with a delicate type of 'rope' decoration in narrow
rib motif; relatively large raised plastic curls. Several
other sherds have raised strip with finger impressions of
usual type.

Handles and Lugs

one with plastic tail 31

Several frags including 4 strap handles, 1 T-lug,
1 horizontal unpriced lug, 3 double lugs, at least one of
M type, one horizontal lug, indented with plastic
tails from ends leading almost vertically.

Bases

Several frags of usual types including 9 flat bottoms
and 3 ring bases, one priced. One fragment of base with
net impression.

Area G cont

Surface

(1), (4)

about 1 1/4 tin total. At least 30 small vessels (incl 3 jars) and one lge jar.

Shapes

Fragments of the rims of at least 30 small vessels. (A, C1) [KG 4 ca. 12] [KG 1 ca. 16]

inv. bowl KPhildat

including:

elongated hdl with 2 loops descending vertically

A 1: (Rim frag with ^{frag lip} probable fragment of rim.) one

A 2: fragments of at least 19 rims, at least 6 from angular bowls and at least one with PB lines inside.

with upturned lip or collar

VSHP C 1: Small fragments of at least 3, two with lug set at join of rim and body and one fragment of collar neck with red coating.

C 2: Small frag. of collar-neck jar with ^{bored} hole

* found at surface west of wall 2

D 1. fragments probably from 3, including one frag of strut with diagonal incision, one frag probably of flattened strut and fragments of upper rim with well preserved red coating on inside, traces on outside.

D 3: Several fragments of ^{at least} two pans, one with sides at least 0.09 m. high has pierced rim squashed in from outside and ledge lug set beneath it on inside; - Another has straw-like impressions on bottom and preserves part of rim rising from flat edge.

Other Shards

Incised and Grooved: frags. from 2 ^{or 3} large vessels, one, prob. from an incised rim, since the incised part is slightly raised, has multiple chevrons

Handles and lugs: several lugs and strap handles of usual types. One frag. with red coating possibly from a high rising lug, pierced twice. One frag. of handle making an angle, one fragment of a flat handle joining a vertical lip of great diameter. Frag of small lug mounted inside a vessel. One tab-like knob probably from handle

Bases. fragments of at least 12 including flat bottoms, dish bases and ring bases. One frag of base which was made separately and is broken at surface prepared to receive walls of pot.

Frag. of plectrum or plecter with flat bottom and convex upper surface; its rim rises on oblong curve

Frag. of bowl or lid with rounded transition from vertical to horizontal plane.

Area E

Lots D-⑥ comb.
only 1 large bag kept.

total: ca 1 tin

Shapes

Fragments of at least 10 small vessels including those here mentioned under A and C1

A 2: Fragments of at least 5, at least 2 with angular shoulder; Two were decorated with PB inside and one with PB outside. Patterns simple parallel lines - but sherds small.

C 1: Frag. with upturned lip or collar and VSHP lug just below join of lip and body

C 2 or C 3 rim of frag. of jar (dia ca 0.21 m).

C 3: one frag. rim

D 3: Fragment of pan with low curving wall, unpierced, burnished inside, roughly finished on bottom. Frag. possibly from mother, similar pan.

Area E cont

Other Shards

With plastic decoration: One frag with applied plastic strip

Handles and lugs: one strap handle. Fragment of large vertical handle with thickened edges, rising to knobs above. Another flat, vertical handle turning it in acute angle.

Bases: One flat bottom, 1 disk base, one ^{pierced} ring foot, 2 other bases with net impressions. All from medium to large vessels

2 frags with bored holes

AREA H

Lot diagram see KPE, 108.

② ③ ④ below surface. [① surface - small bag - excluded in decptn though not in total 9.]

About 3/8 + in total, only a small part from surface. no change or development in deposit in Tr B and one join.

Shapes

At least 11 bowls.

A1: One rim fragment

A2: Fragments of at least 3 vessels:

two with Petition-burnishing inside consisting as far as can be seen on the small shards in single parallel lines

A3: One fragment preserving the complete profile of the wall of a pot.

D1: Frag prob from rim of loop.

Other Shards

Red coated: Fragment of small vessel with coating inside, burnished outside.

Handles and lugs: Fragments of at least 4 strap handles, one small, another ^{red coated} ^{with} plastic tab-like knob at top. Fragment probably of another tab-like knob. One large horizontal lug, unpierced. One frag

Bases: 3 small flat bottoms, one large flat bottom (dia ca. 0.16 m), one large disk base, concave beneath. Fragment possibly of disk base has curving incised line, perhaps following circumference.

One frag poss from tab rim of small vessel.

* With plastic dec: Frag with rpe dec of usual type

AREA J

39

1 lot. 1/16 Tin

Shapes

Fragments of at least 5 small vessels (A or C1)

A26: frag of pedestal bowl & join of bowl to pedestal

C: frag of rim of large jar

Other Shards

Pattern Burnished: frag of small vessel with parallel
burnished lines on outer surface

Bases: Frag of one lgc flat bottom

Frag of rim with indentation on top.

Puzzle shard.

Area K

2 lots. ca 1 tin. 80-90.2s Large coarse vessels

Shapes

A2: Rim frags of at least 6, one with incised line outside below lip. Body frag. with burnished stripes inside

C2: 1 rim frag. poss. fr lge hole with jar.

C3: Fragments of at least 2, probably 3 or 4 large jars, probably all fairly low, though no complete profile is preserved. ** Many frags are grey in color. A few have bored holes. Most rim fragments turn out at lip though 2* do not. Most body fragments are squared or rough on inside, smoothed on outside. From some jars in add to hole in profile, 2 wide tunnel-like strap hdl's. Frags of 2 bases, one D. 0.12 the other D. 0.15 (flat both)

Other Shards 1 frag crude rpe dec

with Plastic Dec: 1 large separately applied tab. like band, presumably broken from a handle. Irregular strut like fragment.

Fragments from one join from rim to shoulder, at which a strap handle is set

* perhaps from same vessel

Area F. Lower Cemetery

41

Catalogue for Surface

Lots described in 4 groups (for convenience). Numbers of pots are minimum for each group.

Sp 1. KPES, KF-①②③④⑥⑦⑩⑫⑬ Vol. est. on sep. sheet

Shapes

fragments of rims of at least 21 small vessels, mostly bowls of A2, only noteworthy mentioned. (A, C1)

A2: Frags of at least 2 shallow bowls with P-B inside, one with meeting near rim of 2 groups of parallel lines. * Frags of 4 others with angular shoulder, one with small vertical hdl from rim to angle. * A2a: high base of vessel like Kph 9, dia 0. with pair of holes. A2b: at least 1 frag. of join.

B: Frag. possibly of Ting pairing vessel.

C1: 1 Frag of rim, plain, upright. Small frags 2 with out-turning rim.

D1: Frags of at least one, prob more included strut with crude vertical incised lines, 2 frags prob. from incised becks.

D3: Pierced rim frag.

Other Shards

incised: Embin with 3 hor lines outside. Rim with raised surface running vertically and oblique slashes. Frag of large vessel with incised zone or band (rim?)

hdl's: frags broad and narrow straps, one with small knob above, frag with double lug. 2 with opp pairs of holes

Bases: at least 6 gr to med, 2 lge incl one with net imp
D1 → Frag rounded vessel with protruberance with incised dec.

* Frags of another small conical bowl. (pr)

* Frag of another shallow bowl with P-B outside - ggs of lines at rt. angle.

F Lower Surf. cont.

Sp. 2

KF-98 99 54 100 114 45 42 46

124 - only askos frag.

Shapes: Frags of rims of at least 23 small vessels incl. A and C1.

A2: frags of at least 2 rims * A2b: at least 2 from frag preserving join of base and body.

B: Frag of lip of closed vessel with flat hdl springing from it, probably in askos

C1: Frags of rims of at least 4 incl 2 with collar-neck, 1 with slightly upturning lip and T-lug on shoulder and one hole-mouth jar.

C3: Frags of two rims with incised dec. of multiple chevrons outside, one on raised tip. Another rim frag, slightly out-turned at lip has regular impressions on top of lip at least and hole ca 0.03 m below lip.

D1: Frags prob of x 2, incl one incised strut incised with two series of chevroned lines separated by two horizontal lines and one frag of back with 2 series of multiple chevrons divided by 2 vertical lines.

D3: frag. rim of pan, pierced

Other Shards

hds: Several strap hds, T-lugs

Bases: 7 small, 5 med to large flat bottoms (most) or with low foot

with plastic dec: Frag with large plastic bump, flattened on top. Frag. with rpe dec w/hing angle.

* incl one from very coarse bowl with angular shoulder and plastic bump at angle, one with PB inside and 2 with PB outside. One of the latter has a design of diagonal lines perhaps within rectangular field.

F Lower Surf. cont.

Sp. 3

KF-93 95 97 96 94 07 91 39 40 43

Shapes: Frags of rims of at least 12 small vessels incl. A and C1

A2: 2 rims of vessels with angular shoulder, 2 others thickened outside and incised, one with multiple chevrons. Frag of another rim with indented horizontal lug set beneath lip.

C1: frag of small jar with collar neck. Frag of another with out-turned lip.

C2 or C3

D1: 3 frags from at least two, one from a back with knob inside, another a frag of strut, unincised, the third a frag of strut incised with multiple chevrons.

Other Shards

RC: Frags of lower parts of two large vessels with red coating on outside

*

Hds: Several strap hds, one very large, frag. of hdl with rounded cross-section broken to show that a plug at its end was thrust through pot wall.

Bases: Frags of at least 7 small and one med incl flat bottoms, rings feet and prob. pedestals.

*

Incised: Several frags of small vessel with incised dec on body consisting of bands outlined with 2 lines and with chevrons and elongated dots. One frag. of another larger vessel with dec prob. on body

→ The other has a zig zag design

F Lower Surf. cont

Gp. 4. KF-49 (50) (51) (48) (38) (41) (129) (130) (133)

Shapes

Fragments of rims of at least 32 small vessels, at least 6 of them from small jars. Fragments of rims of at least 6 large jars.

A1: fragment of rim with out-turned lip probab. from A1 bowl.

A2: fragments of at least 15 ^{rims}, at least 5 of which have angular shoulder, 2 of them with angular shoulder are very shallow, and one of them has burnished stripes inside running diagonally from rim. Fragment of body of another shallow angular bowl with burnished pattern inside consisting of hatched areas with rectangular borders.

A1-A2: rim fragment of large bowl with handle descending from rim connected to a lug beneath it.

C1: Fragments of at least 6 including 1 with collar neck with RC on surface, 3 with slightly up-turned rim*, one with plastic bump on shoulder and one probably with plain rim and T-lug descending from it.

C23: Fragment of rim with band of raised chevrons, raised plastic strip with indentations set obliquely beneath. Another fragment probably from rim of large jar has raised strip with diagonal grooves.

D1: Fragments of struts of 5 different vessels, on at least one of attachment of handle has vertical groove near front and diagonal slashes on side.

D5: Fragment probably simple vertical handle of lid.

* one with T-lug from lip to shoulder

Other Shards

incised: 3 other fragments, one of raised plastic strip rising perhaps to form lug with diagonal slashes.

with plastic dec: fragment with bump on outside of vessel wall

handles: many fragments of usual types incl strap handles, T-lugs and double lugs. One strap handle has 2 vertical incised lines. One fragment large crescent lug, fragment probably of high rising handle.

Bases: Fragments of at least 24, 5 large flat, 12 mid flat, dish or raised, 1 5-mid ring, 6 small, flat.

Several shards with bored holes, one with hole half bored

3 probably later shards, 2 KF-38, 1 KF-130

NB. This record for Lower Cem. surface was used as a guide in writing final catalogue together with further examination of shards. A few pieces changed categories.

F Lower. Around Eastern Sp. of Graves

KF- (92) (101) (102) (103) (106) (117) (119) (123) (126)

Total amount ca 1 3/5 lbs (figured on separate sheet)

From rim frags: at least 25 small vessels, at least 4 of which are small jars, and 1 large jar

Shapes

A2: (Rim fragments include) ^{rim frag.} one with small wide lip, h p below lip with a hole through pot wall at its edge, one frag of grey-black fabric one rim with PB outside

A2b: Fragments of at least 7: one preserving full profile of base has seal impression; one ^{base} with horizontal groove, one with cut out holes, possibly diamond shaped

A1 or A2: 2 frags of rim deeply incised with multiple chevrons, dot.

C1 Frags of 3 collar-neck, one D. O. 11, with frag with up-turned rim.

B or C1?

C2: Fragment from slightly up-turned rim

D1. Frags of at least 5 including 3 struts with incised decoration; two with multiple chevrons, the other vertical lines, one frag of body of jar or beak incised with diagonal lines, one frag of unincised beak with plastic band on inside

D5: One frag. flat with rounded rim

Other Sherds

Red coated. 1 out; 1 ins

PB -

Incised - Frags of at least 4 vessels incl. one rim incised outside on raised strip, frags prob from 3 bodies incised outside, one angular vessel: incised inside

With plastic Dec: Frags of several vessels with impressed ridge

Hdlcs: 12 straws, 2 double lugs, one of M type, one large horizontal lug, bent down at ends, with indented edge.

Bases: Fragments of at least 15 including 2 small flat bottoms, 3 small ring bases, 2 medium flat bottoms, 4 medium ring bases, 3 of which pierced, one large flat bottom and one large ring base, pierced.

Frag. of small jar or jug with out-turned lip and prob. vertical hole.

B or C1?

F Lower Around Central Group

Gp. 1: KF-5 8 10 11 12 13 15 18 19 20 21 24 26 27

28 29 30 31 33 34 35

and discarded lots KF-9 14 25 36 (all nondescript) on separate sheet.

Total quest.

mostly A2 bowls

From rim frags at least 75 small vessels, (incl. 11 small jars) and 9 large jars

SHAPES

A 1: rim frags of at least 3 are probable.

A 2: Fragments preserving parts of the rims of at least 43, at least 11 without ^{plain?} angular shoulder and 21 with angular shoulder or up-turned lip. One has angular shoulder and slightly out-turned lip. 16 have burnished patterns, 13 shallow bowls inside and

three stripes making angle close to the rim, or up-turned lip, 4 prob had fairly even curve to lip.* The patterns, so far as can be determined, consist of groups of parallel lines, meeting ^{at} oblique angles, rarely at right angles and, in one case, a band of cross hatching.* In one case a triangular area is filled in solidly when two groups of parallel lines meet. In addition to rim fragments there is one body sherd prob for a bowl well burnished inside and with PB outside, perhaps - a pattern of groups of parallel lines enclosed in a frame, which has an elongated

inclined lug, prob h.s. Frags of 2 flat bottoms have pb inside, one with

One rim has RC outside, one has raised stroke on thickened band at lip.

One frag. has a double lug-hdl descending vertically from rim, another small has lug at lip.

* The burnishing strokes are generally constant in width in any one bowl, though they may vary from bowl to bowl and in one case groups of narrower lines may have been bordered by wider lines

* also pattern with border in KF 1

† one prob mult chevrons on thickened band.

A 2 add bowl with Tab rim (KF 12)

A 2 B: Frags of at least 5 from juncture of body and pedicel; 1 red coated

B: One frag ^{prob} of bridge spouted jar.

from neck or rim

C 1: Frags of at least 11 vessels including at least 2 with conical upper body, one with flat vertical handle set below lip. (One with flat shoulder and rolled up rim) 2 with out-turned or up-turned lip, one of which has cross hatching in pattern burnish on shoulder and 6 with collar necks; one with red-coating inside and one with incised decoration on collar consisting of multiple chevrons. One other frag prob from collar of small jar has crude horizontal grooves on outside. Frags from bodies of 2 jars with rounded body and conical neck.

C 2: Frags from neck or rim of 3+ vessels. One frag of bowl and lower body with red coating on exterior prob closed jar from diameter.

C 3: Frags of rims of at least 6 vessels, one with slightly out-turned lip, one with indented rim and indented lug, perhaps crescent shaped, below lip, two decorated with crude incised patterns of diagonal lines at various angles. Another rim prob C 3 is thickened outside and has indentations on top and edge

C 2 or C 3

o One with small lug set at juncture of neck and shoulder

* One frag (either from lge collar-neck) with incised multiple chevrons on a thickened horizontal band or from open jar.

one frag on both sides

rect. spirals

D1: Fragments of at least 10 including 6 struts with incised decoration, in three cases diagonal slashes and in one case ^{prob.} a line and dot pattern. One large frag. of lip and one frag. of back joining body. One of the struts - broad, mentioned is from structure with body - one line of incision preserved on body.

D2: Frag. prob. of cylindrical stand with ledge inside.

D3: 4 Frag. of 1 or more coarse pens with pierced rim. One frag. prob. of low pen, burnished inside. One frag. prob. of pen with pierced Tab, at rt angle to one surface (2D) ^{or lug}

D5: One frag. prob. of crown lid, pierced at apex

Other Shards

Incised: 8 shards from different vessels with designs of groups of parallel lines ^{and} or multiple chevrons. One has one of punctations near three slightly curving lines.

with plastic die. Several frags with impressed ridge, 2 small bumps on pot walls, one frag with ridges in curvilinear pattern

Handles: Strap hdl, T-lugs incl one knobbed strap hdl with plastic ridge running obliquely from one end, 2 other knobbed strap hdl, 2 other str. hdl with ridges from end, in one case impressed. 1 indented crescent shaped lug, one horizontal lug turning T into 2 for plastic tails. One small high swung hdl

} Frag. prob. of 2 Tabs from rim ^{broad}
' Frag. of curved prof.

(one D. 0.14)

Bases: Fragments of at least 25 (other than pedestals), 14 large, one a dish, 6 flat, 4 rings - 2 of flat ones. Low net impressions. 10 small, 2 flat (D. 0.06 of one), 6 rings (one D. 0.083) and one dish, hollowed beneath. One small (D. 0.036) has a leaf impression. In addition one frag. has the impression of a net woven round.

Gp. 2: KF-(87)(89)(122)(28)(82)(108)(103)(86)(81)(69)

(59)(44)(76)(75)(68)(84)(121)

And discarded lots: KF-(90)(77)(47)(71) (all nondescript)

Rim frags of J least 68 small vessels, mostly A2 bowls but including at least 11 small jars. Rim fragments of J least 7 large jars.

SHAPES

A - on separate sheets

B: frag of jar with bridged spout, tab on rim above spout - thick rim incised with diagonal lines.

C1: Rim frags of 9, ^{one with T-lug below lip} 4 with concave upper body and plain or slightly upturned lip, one of which has applied plastic ornament in a curving line, another of which has pattern burnishing strokes in groups of parallel lines, 5 with rounded shoulder and up-turned rim. (One frag of body of small jar perhaps with rounded bottom) One frag of mother with elongated neck of grey fabric with red-coating inside and out.

B or C1

C2:

n Kph. 16

Frag of collar neck of one other med to large jar with traces of red coat outside

* Sherd with 2 flat surfaces and diagonal incised lines.

o Frag of body of small vessel with band of incised zigzag bordered on one side by one line, on the other by 2 lines.

C3: Fragments of rims of 5; one with slightly thickened lip has vertical lug handle set beneath lip. Another preserved part of large crescent lug with indented edges.

C2 or C3: Several joining fragments of the flat bottom and lower body of a large jar, scored inside and burnished outside. Bored holes, three within 0.04 m. of one another indicate that it was broken and mended in antiquity. Mostly fired red, but with a distinct black streak on one side.

D1: Fragments of at least 4 including frags of four struts, 2 incised with diagonal slashes and one with vertical groove at edge, fragments of 2 unincised handles with plastic bumps on inside and 2 incised holes.

D3: One frag of coarse ^{irregular} pan with bored hole in bottom, not preserved to rim. Frags of 2 coarse pierced rims also prob. from pans.

PB: Frag of vessels ^{2 vessels} with PB outside ^{sp of} parallel lines

Other Shards

Red-coated: Several other shards.

Incised: Small frags of 3 small rims, one incised with multiple chevrons, one with slightly curving diagonal lines, one with diagonal line and large punctations. Frags of 4 lge vessels prob. from rims, with diagonal lines, prob. part of multiple chevron. Frag. of medium sized vessel with complex curvilinear and rectilinear design.*

Thin frags from 3 other small vessels, one with curving groove and traces of red coating.

With Plastic Dec: Many frags with impressed ridges, one with 2 meters of an acute angle. One frag with wide ridge having 2 rows of finger impressions. One frag with wide ridge slashed diagonally, and *
 2 frags with applied plastic cords, hollow in middle, one with red-coating. One frag with two plastic strips set parallel. Frag of rim, indented above with impressed ridge descending horizontally from it.

Handles: At least 21 strap handles, 1 extending below in two plastic tails, 2 with impressed ridges set around them, 3 with vertical grooves (2 prod from the same pot), 1 with plastic knob with vertical incised lines, 1 with simple knobs. At least 17 lugs, 10 vertical lug-handles, one very wide, 2 horizontal lugs, one small with central indentation. Two indented crescent lug and 3 double lugs terminating below in plastic tails, two with red coating, 4 high swung handles or lugs, two with knob and internal strut, 1 very flat with incised diagonals at top and edges, one lug-like with small hole.

Bases: Frags of at least 26, 6 med & large flat, 2 large dish, one large ring, 9 small flat or with low disk, 2 slightly hollowed, 4 small dish bases, 2 small ring bases, one small round bottom, 1 mat imp.

* Two with narrow ridge slashed diagonally.

o One with spiral form dec of linked hooks.

Gr 3 KF-116 113 111 110 109 120 66 55
 53 56 62 65 63 60 61 64

55

Rim fragments of at least 56 small vessels (including 4 small jars) and 4 large jars.

Shapes

A: on separate sheets.

C1: Frags preserving part of the rims of 4, one with rounded body, simple lip with horizontal incise line beneath it, one with conical neck and red-coating on outside, one with collar-neck, and one with irregular shoulder and vertical lips.

C2: One frag of collar-neck probably from a large jar.

C3: Rim frags of 2, one with horizontal band outside thickened and decorated with crude grooves and finger impressions, one with diagonal slashes on lip.

with indented edge

C2 or C3: Frag from rim of vessel with large T-lug descending from lip. (Frag., perhaps from near rim, of large vessel with thickened band incised with diagonals and conical neck.)

Other Shards

D1: Fragments of at least seven including frags of seven or more struts, five with incised decoration, one with multiple chisels, one from joint of strut and top of handle with vertical line on side and multiple zigzag on front, one from juncture with body with multiple chisels - enough of the body preserved to show that it was also incised, one with vertical groove at point of attachment shows that it was attached by a plug through the wall of the pot. One frag of incised

back at junction with body with decoration of close set parallel lines perhaps arranged in groups.

D3: Rim frags from at least 2 coarse irregular pans; one pierced and indented; one frag from a high rim, pierced tab.

D5: Knob prot from 1st lid (max D. 0 out P)

Other Shards.

RC: few shards

PB: few 2th shards

incised and grooved: (one ^{other} body shard), one frag from rim or collar. neck with incised parallel lines, one frag from body of small round with fine lines incised at various angles. One other p. 55 →

With plastic Dec: Several frags with impressed ridge; one with slashed ridge

Holes: at least 18 strap holes; one decorated with a knob and another set on a ring of flat curved body with impressed ridge running behind it. At least 11 large, all prob. set vertically. incl. 3 T-lugs, one broad lug, one frag of lug with plastic tail with diagonal grooves, one double lug with long plastic tail. One double hole, perhaps a scoop strut

Bases: Frags of at least 35, 11 large flat, 3 large rims (2 splashing), 10 small flat, 3 small disk bases (one oval), 4 small rim bases, 2 small rounded bottoms. One not in primary or large flat bottom or disk base.

other: one frag with depressed rectangular area. Puzzle shard. →

Gp. 4: KF - (58) (79) (112) (115) (88) (85) (80) (74) (73)
(70) (83) (57) + KF (52)

57

Rim fragments of at least 35 small vessels including 1 small jar. Rim fragments of 4 large vessels.

A: on separate sheet

C 1: One frag of rim of rounded jar with out-turned lip and profile to rounded bottom. frag of rim of another. 2 slightly flared, collar necked, one with RC, one incised at bottom

C 3: Four rim fragments probably from squat open jars.

D1: Fragments of struts of at least 6, one with vertical incised line *

D2: One frag with ledge inside.

D4: one frag of flat bottom, pierced at regular intervals.

OTHER SHERDS

incised and grooved: one frag with rim or edge with diagonal grooves, one frag with parallel and slightly curving lines, 2 other shards.

** D3: one frag. prob from pan with pierced rim diagonally slashed on top and horizontal lug inside.

* 2 frags of flat profile prob. from scoop backs, one with incised parallel lines running diagonally to edge, the other with " vertical lines linked at intervals by horizontal lines

with plastic dec. Many frags with finger impressed ridge.
/ 2 shards with crude ridges.

Handles and lugs: Frags. of at least 21, 8 strips handles, one set on pot wall with very flat curve low impressed string approaching it. 8 lugs or lug holes from base. One other elongated lug-hdl set vertically from rim of small vessel; the pot wall is pushed inward making a bump on the inside of the vessel at the point where the lug is pierced. One horizontal lug, slightly arched on top with indented edge and impressed ridges running down from ends. One small double lug, arched in a crescent. One frag. of high swung lug or handle. One small strap mark from a handle. One frag with broad ridge rising perhaps to form handle.

/ * frag of an lge double lug.

Bases: Fragments of at least 17, 3 large flat, 6 small flat, 2 small dish, 5 small ring bases, 2 slightly splays, one large flat with wet impression.

Frag. of small rim, slightly out-turned with low ridge descending from lip with short vertical incised line.

In Summary changes made in total numbers

- C.1: find figur from reexamination and comparison class C.3
- C.2: total of given

F UPPER

Final Catalogues

I Below Lowest Graves: (Tr A test and Tr A2)

KF- (188) (190) (182) (183) (184)

	KPE	Quant.
(188)	187	$\frac{1}{5}$ tin = $\frac{4}{60}$
(190)	187	1gc hdlful
(182)	178.	$\frac{1}{6}$ tin $\frac{10}{60}$
(183)	177	$\frac{1}{12}$ tin $\frac{5}{60}$
(184)	177	$\frac{1}{20}$ tin $\frac{3}{60}$

$$\frac{22}{60} + 1gc hdlful = \frac{2}{5} \text{ tin}$$

Rim frags of at least 9 small vessels (incl at least 1 small jar) Rim frags of at least 0 1gc jars

A1: One rim frag. (188)

A2: Rim frags of at least 4, 2 with red coatings on interior.

A2b: Frags of at least 2, one from juncture of body and pedestal, the other a frag of a pedestal with horizontal groove and cut out parts above it (182)

C1: One small rim frag. with simple lip.

D1: One frag of strut with vertical groove.

D3: Small frags of at least one coarse pen with pierced rim

Other Shards

One frag of a small hollow spoon-like vessel. (182) inv. obj.

Red coated: a few fragments

Incised and grooved: One frag of a small - med sized vessel of grey to black fabric with grooves forming a curvilinear pattern on outside (190)

with plastic Dec: One frag with ridges making a curvilinear design. Another frag with curvilinear ridges on a separately applied piece. (83) Frags of at least 2 vessels with impressed ridges, one with sloped ridge (183) one knob perhaps broken from pot wall.

Handles and lugs: Frags of 3 strap holes, one with plastic ridge set vertically at top. Two vertical, horizontally pierced lugs.

Bases: One lge flat bottom, one lge raised base, 1 med flat bottom, one med raised base, one med ring base, 3 small raised bases, 3 small ring bases, one of which is pierced, one of which is from a vessel with pierced bottom, two small flat bottoms with rounded juncture with wall.

* one frag with applied ring with sunken center. (183)

F Upper 2. Around Western Graves

KF - (140)	1/5 tin	=	6/30	(169)	1/3 tin	=	3/30
(141)	1/5 tin		6/30	(170)	sm. hdlful		1/30
(142)	1/7 "		2/30	(171)	1/3 tin		10/30
(143)	1/10 "		3/30	(172)	1/3 tin		10/30
(146)	1/10 "		3/30	(173)	1/6 "		5/30
(149)	1/10 "		3/30	(174)	1/5 "		2/30
(153)	1/3 "		10/30	(175)	1/4 "		8/30
(155)	hdlful		1/30	(176)	1/20 "		1/30
(156)	1/3 + "		10/30 +	(177)	1/4 "		5/30
(157)	1/2 "		15/30	(178)	1/6 "		5/30
(158)	1/4 "		8/30	(179)	1/5 "		2/30
(160)	1/8 "		4/30	(180)	1/8 "		4/30
(161)	1/4 "		5/30	(181)	hdlful		1/30
(163)	1/6 "		5/30	(185)	1/2 "		15/30
(166)	1/6 "		5/30	(186)	1/4 "		8/30
(167)	1/6 "		5/30	(187)	hdlful		1/30
(168)	Small hdlful		+	(189)	sm. hdlful		1/30
			9 1/2/30 +				8 5/30 -
							17 6/30 = about 6 tinfuls

Group 1 (order as studied): KF - (186) (163) (161) (160) (158) (157) (156) (153) (149) (180) (177) (175) (172) (171)

Rim fragments of at least 92 small vessels including at least 23 small jars. Rim fragments of at least 12 large jars

A1: 3 rim fragments. One has an applied plastic strip descending from lip. ✓
A2: Fragments of at least 62, at least 6 without angular shoulder and at least 4 with angular shoulder. One prob. without angular profile has indented lug set below lip (186) two without angular profile have VS HP lug on body and one of these has an indented tab on lip. ✓

A2 con't: Decoration. PB: at least three with fairly steep sides have pb on outside¹⁵⁸ and one other has pattern burrishing on both sides. The patterns seem to be of wood types.
153

Inc.-grooved: one frog with angular profile has two rows of punctations at angle (149), another frog with angular profile has vertical incised lines 183.

A2 b: Fragments from join of body and pedestal of at least 14; one large frog of rounded upper body 153, one frog of a pedestal with triangular holes punched in it¹⁷⁰, one frog of a pedestal decorated with incision and punctations 172, another decorated with pairs of vertical incised lines¹⁷², several with horizontal incised lines near juncture with pedestal. 4 frogs with angular cut outs probably from pedestals.

C1: frogs of at least 23; 7 hole mounted, one of which thickened at lip and one has incised lines and impressed triangle^{*}; 7 with collar or distinct neck, one thickened at lip¹⁵⁸, one showing join of handle to lip¹⁸⁶, one with a design of incised zigzag on collar¹⁷⁵. 3 with cylindrical or conical lip (one with red coating on outside)¹⁷⁶. One body frog has a design of vertical and horizontal grooves 175. Frogs of the bodies of three small vessels, probably jars, of tall narrow profile with elongated handles set vertically. 156, 156, 177. A handle with knob at stem is probably from a similar vessel 153.

C2: 1 rim frog of large hole mouthed jar 163, another with thickened lip and partially bevel hole 163, another with thickened rim. 158

* One with narrow impressed ridge set vertically near lip 171.

C3: rim fragments of at least 11. On prominent part of crescent lug near rim 186, one with T-lug set below lips, another with long-handle with plaster extension set below lips¹⁵⁸. One with a small unpaired horizontal lug with central impression set beneath lip 171. One rim frog of vessel with very spreading profile (foot or lid?) 157.

C4: one frog from rim prob of tall jar with raised impressed strip set vertically 153.

D1: Fragments of at least 11 including 2 stems apparently not incised and 8 with incised decoration consisting of vertical lines and zigzag patterns, one with close set multiple zigzags 158. One frog preserves profile of top of handle and part of stem^{*}. (One stem decorated with impressed triangle 171). One frog of a handle of gray-bleed fabric has incised decoration of multiple zigzags in two vertical zones.¹⁷⁵ One frog prob. of stem at join with handle preserves trace of curvilinear incised decoration 172.

D2: One frog probably from cylindrical stem with projection inside 163.

D3: frogs of several with pierced rims, one with a long thin projection on inside.

D5: 2 rim fragments perhaps from flat lids

* Another frog has knob at junction of stem and handle. 186

Other Shards: Red Coated: many body shards on inside or outside, in no case was any pattern recognizable^{oo}

P.B.: a few small fragments

inc and ground: Fragments of 4⁺ vessels with varied pattern on outside of rim, in two cases on thickened band, one of which has a vertical lug-hole set below band 153. Pattern of multiple zigzags. Fragments of at least six other vessels with incised decoration, one perhaps from a small jar has widely spaced pairs of punctations between two horizontal lines. It also has RC inside. Three fragments are decorated outside with curving lines, perhaps parts of spirals: one present as far as rim¹⁵⁶. The other frags all prob. multiple chevron

with Plastic Dec. Many frags with finger impressed ridges. One frag of pot well with plastic bumps with central indentation

Handles and lugs: frags of at least 37 strap handles, 7 with knob at apex* (2 of which perhaps rose above a rim, another of which had impressed plastic dec. at junction with pot) Another decorated with " " " 2 with raised plastic strip running vertically from median, one has indented edges. 12 vertical horizontally pierced lugs or lug handles. One horizontal impressed lug. Two double lugs with plastic tails. One large flat handle with interior strand to pot well, another with interior strand like calibration probably attached in two places. 180. One large flat handle with interior strand 177. 2 small vertically elongated handles set at lips of small vessel. 1590

Bases: Frags. of at least 33; 2 large flat; 2 large raised; 2 large spilling rings pierced; 2 med flat; 4 median raised; 7 med ring, one pierced; 5 small flat; 4 small raised; 5 small rings, one pierced. One small bowl has bored hole through bottom of pot + one with central groove (or in 2 degrees?)

8 One frag of a high-summed lug-hdl. 188

Other cont
frag of large shallow pan or bowl 175

^{oo} in one case on outside of very large vessel (this item of walls about 0.015) with bored hole.

Upper 2. Around Western Graves cont.
 Group 2: KF (169) (167) (166) (185) (178) (176) (174) (173) (146)
 (143) (170) (168) (189) (187) (155) (181) (179) (140) (141) (142)

Rim frags of at least 37 small vessels including at least 4 small jars. Rim fragments of at least 2 large jars.

A1: 2 pass. rim fragments ✓

A2: Fragments of at least 31 including at least 7 with continuous profile and 2 with angular profile. 2 of them with continuous profile have ^{VSHP} large set below rim*. 2 rim frags have red coat on inside and one has PB on inside. † One frag prob from rim but possibly from a pedestal has 2 horizontal grooves on body.

A2b: 6 frags preserve part of juncture of bowl and pedestal. One preserves profile of bowl from rim to juncture with pedestal. Several frags preserving parts of cut outs probably from pedestals.

C1: Frags from rims of at least 4: One hole worked and 3 with lips turning out in some way. One of the latter very small and shallow 146. Another vessel prob of hole worked, jar has knobbed handle set at lip 173 ✓

C3: One rim frag preserving part of indented crescent lug just below lip. Frag of another thickened rim.

D1: Frags from struts of at least 10, one from juncture with handle made from two rolls of clay and has an angled bump at juncture 146. Struts of 3 vessels apparently unrimmed. The rest decorated with vertical grooves or multiple zigzag. One frag prob. †

Scoop from body of jar with strut preserving bored holes in body. One

* in one case the rim is worked above the lug KF-140

† One frag of bowl with PB outside preserved rounded transition to flat bottom. Another frag preserves part of flat bottom with PB inside 141 ✓

frag. of handle at top decorated with a band of multiple chevrons; Inland dec contained on back of handle. Covered with red coat including incisions ✓

D3: Several frags of crude low walled pans with pierced rims, one with pierced and indented rim.

Other Shards:

PB: 2 other shards, one on outside and RC on inside, the other with PB inside

Incis-Grooved: Shards of 4-5 other vessels with inc. on outside. One with pattern of multiple chevron was smoothed after incisions were made.

with plastic dec. one dish on pot wall 143. Several other frags with impressed ridges, one with very broad impressions ^{V5}

Handles and Lugs: Frags of 12 strap handles, one set at rim, one with knob at apex, one attached to flat wall with plug* & VSHD lugs, one HSHV lug; 3 double lugs, one very small. Two crescent lugs with indented edge, two horizontal lugs, unpierced, with central indentation. Frags of two high-rising handles.

Bases: Fragments of at least 18: one large flat, one medium flat; 6 medium raised; 6 small flat; 2 small ring, both pierced and one oval.

* On dec. of edges with plastic ridges

F Upper Catalogue 3 Around Eastern Graves

KF-165			(152)	1 hdl	1/30
(162)	1/15 tin =	2/30	(151)	2 "	2/30
(159)	1/6 tin =	5/30	(148)	1/20 tin	1+ 30
(150)	1/6 tin	5/30	(147)	-	
(145)	}		(136)	1/15 tin	2/30
(144)			(137)	1/15 tin	2/30
(154)	2 hdl.	2/30	(138)	-	+

A little more than 2/3 of a tin

Rim fragments of at least 19 small vessels including at least one small jar Rim fragments of at least one large vessel.

A1: one rim frag probable ✓

A2: frags of at least 15, at least one with and one without angular profile ✓ One with rim slanted on diagonal, one with RC inside ✓ One body frag with sharp angle ✓ One frag with PB inside prob. on A2 band ✓

C1: one frag. from rim of small hole mouth jar ✓

C3: Rim frags of 2, one thickened with incised dec. outside ✓

D1: Fragments from struts of at least 8, some of which have incised decoration of vertical grooves and zigzag or multiple zigzag; one has two vertical zones of zigzag separated by a groove, ¹⁵⁰ another has two vertical grooves on side and broken lines in front ¹⁵⁰ ✓

A2b: frags from juncture of body and pedestal of at least 2. Several frags with horizontal grooves and/or angular cut outs probably from pedestals. One also has RC on outside. ✓

D3: several frags of coarse low walled pans with pierced rims ¹⁵⁰ ✓
One frag from horizontal lug set on interior probably from pan ✓

Other sherds:

PB: one frag of shell vessel with PB outside ✓

Incis - Groov. frags of at least 3 rims dec outside with incised diagonal lines or multiple zigzag ✓ One has impressed ridge set vertically at lip ✓ 2 other frags with incised lines ✓ One frag of flat profile joins from a flat bottom with 2 curving grooves. 148 ✓

with plastic dec: several fragments with impressed ridges. ✓ One frag with coarse raised ridges making an angular pattern ✓
*

Handles and lugs. Frags of at least 11 strap handles ✓ on one knob or spur; Frags of 3 vertical horizontally pierced lugs ✓ Frags of 2 double lugs, one large; Frags of large flat handle with knob or thumb inside ✓ One tab like knob probably broken from handle.

At least 12 ✓

Bases: 2 large flat, one of which has a row of bored holes in it ✓, 4 medium flat, one medium ring, 4 small flat, 1 small raised ✓

One frag of flat profile with exceptional thickness (0.025) Pan ¹⁴⁸ ✓
One frag of fine fabric dating to MB or later ✓

* One frag of small vessel with vertical plastic ridge turning out to form a projection at lip 137

F Upper Catalogue 4 Surface

KF - (164)	1/6 Tin
(131)	-
(132)	1/5 Tin
(134)	1/5 Tin
(135)	1/30 Tin
(139)	1 Tin
Surface, TrA	1/30 Tin
" TrB	1/15 "
	ca. 1 2/3 tins

Fragments of rims of at least 14 small vessels including at least 2 small jars. Fragments of at least 2 large jars

A 2: Fragments of at least 12 incl. one with continuous profile and two with angular profile. One thick walled with impressed rim, one with lip thickened outside, 2 with vertically set horizontally placed lugs below lip, 2 with red coat inside 139. One with angular profile has plastic bump at angle 164. One frag with PB inside prob. bowl.

A 2b: Fragments from juncture of body and pedestal of at least 3. One frag probably from pedestal with horizontal groove.

C1: R: Fragments of at least 2, one with slightly flaring lip, the other with offset lip and incised decoration on body.

C3: R: Fragments of at least 2, one decorated outside with grooves - multiple zigzag. One frag with strap handle set at rim prob from storage vessel 139.

D1: Fragments from shaft of at least 2, one decorated with vertical groove. One frag with incised diagonal lines prob from the peak of a scoop.

* One frag with handle set at rim prob from an A2 bowl.

D3: One frag. prod from Coarse pen with pierced rim ✓

Other Shards:

RC Several other shards ✓

Inc - Ground: Fragments of 7 other vessels with incised dec. consisting in as far as recognizable of multiple zigzag in two cases on the outside of rims. ✓

With Plastic dec: Several frags with impressed ridges, one case there are set near one another (cf Kph.) 139. Another frag has two ridges running parallel. ✓

Handles and lugs: Fragments of 8 strap handles, one set at rim of vessel, 2 with impressed ridges set at joint with pot, well 2 medium sized flat handles with internal knob or flange, one indented crescent lug, one high rising handle and one high rising tab handle 139. ✓

Bases: Fragments of at least 15: One large flat, 5 medium flat, 2 medium raised, one medium ring, 2 small flat, 4 small ring. One medium flat has a red impression which was perhaps originally covered by a layer of clay since fired grey while surface of pot is red. One small ring has red cord's striations and is pierced by 2 opposed pairs of holes. ✓

After catalogue drawn up (or during) sherds to be kept have lot number written on them. All find illustrations will be from these. Other good sherds kept unmarked possibly to provide a study collection. All the rest is discarded.

in sorting rims of small vessels the following categories are employed:

1. A1 rims
2. A1 " or A2 angular rims (i.e. broken close angle)
3. A2 rims. general i.e. those not angular and those which could be angular but not enough is preserved.
4. A2 rims or fragments of pedestals
5. A2 rims, definitely angular.

Observations on Decorative Techniques

Red coated

Frequently around handles and on pedestals bases -
often confined to a few special pieces?

Pattern-burnished

Shapes with PB

A2: can occur on bowls with pedestal and (from sherd material - no complete profile) on bowls with flat bottoms. Often on inside but sometimes on outside of bowls with relatively vertical upper body. Ever on both sides? Two sherds.

Ever in a pencil? no!

C1: 1 eg. fr. Area D

C2: 2 eggs. Group V, Area L

Burnished strokes usually of about the same thickness on any one pot though there are notable exceptions. It is possible that some of the thinner lines were made by a single stroke. Thicker ones reversed: slight unevenness in edges. Spindle most delicate.

Process: whole pot smoothed but not polished at all? The pattern strokes glass? doubtful.

Part of the process of fashioning a pot rather than a decorative technique. Occurs on X proportion of sherds, generally from large vessels indiscriminately inside or out. Produced when the surface was wiped or rubbed while still in a moist state, probably with a cloth or at least something other than a hand. Occasionally a pot was wiped after burnishing, possibly to correct some outstanding imperfection in its shape not till then noticed, but generally pots with scoring were not burnished or if scored first the marks were removed by burnishing. Marks themselves probably made by coarse particles in the clay being caught up by and adhering to the wiping surface. There is a tendency for the scoring to run horizontally though this in by no means universal. Sometimes groups of marks may be seen making various angles to one another. Sometimes only a part of a surface is scored. KD ①, KD ⑦

Burnishing:

Many vessels simply smoothed somewhat on surface.
Some burnished outside of large closed vessels,
outside of small closed vessels, outside and/or
inside of bowls. Fairly regular and even polish varying
slightly in degree where surface uneven and lower parts
did not receive the same amount of polishing. Only
rarely found as a high polish. No reason to
impress in any case that a slip was applied
before burnishing. Sometimes the irregular
strokes of the burnishing tool be discerned and
a scuff of small bits on the surface e.g. 33
Tool: pebble, bone or polisher - note from
shards.

List of Pottery Profiles and Photographs.

Super-terrestrial catalogues:

Areas A, B, C

Area D. (incl surface spec. noted)

Area E

Area G

1. Stratified deposits
2. Surface

Area H

Area J

Area K

Area L

1. House D
2. House E
3. Passage between House D, E

note Lot, decoration if any and catalogue

Shape A 1
Profiles

Shape A 2
Profiles

A 2 a

A 2 b

A 2 angular

Shape A 3
Profiles

Shape B
Profiles

Shape C 1
Profiles

Shape C 2
Profiles

Shape C 3
Profiles

Shape C 4 Profiles

Shape D 1
Profiles

111
Shape D 2
Profiles

Shape D 3
Profiles

Shape D 4
Profiles

Shape D 5
Profiles

Other Sherds

Red-coatings

Pattern-burnishing

Incised and Grooved

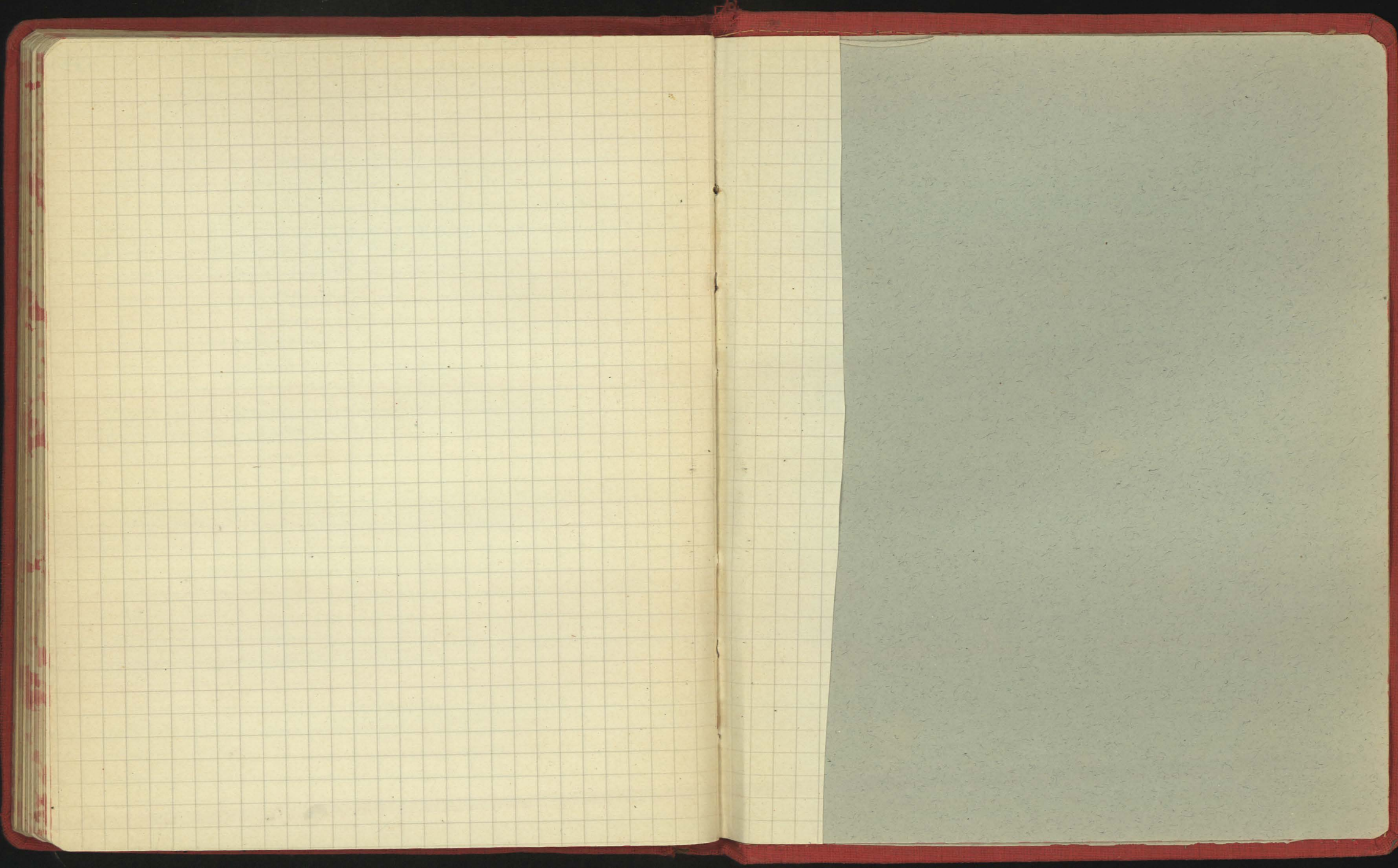
Other Shards cont.

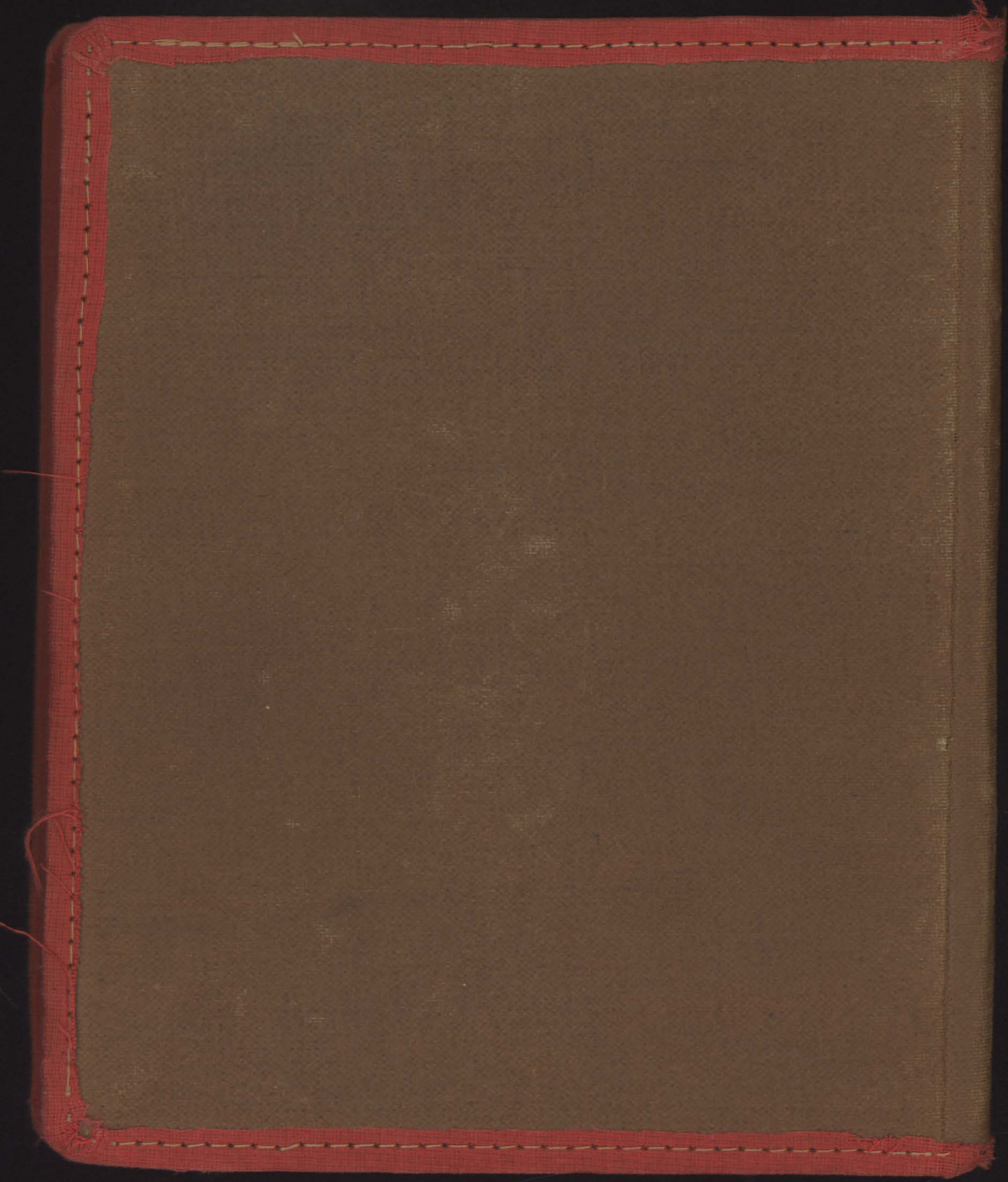
With plastic decoration

Handles and lugs

Other Shards cont

Bases







KP



1974

