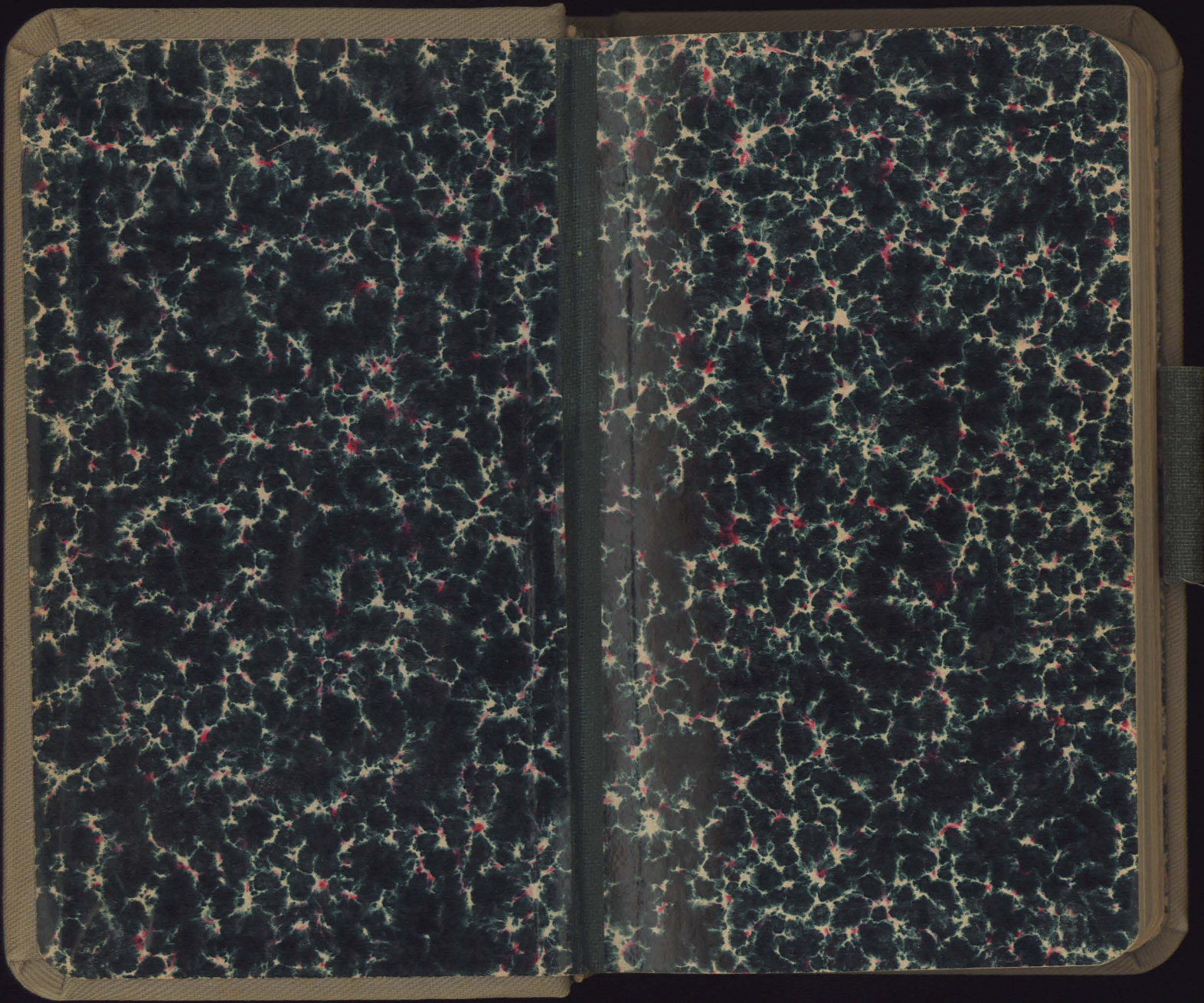


KEA

XXVI





Plans: Area L:Trench D: general: 32, 46, 72, 94

original trench: 20

Excavation 1 48, 76, 6

Rm I, S 76, 84

" " N 80, 84

Rm II entire 95

" " N half 88

" " NE 82

" " NW 82

Trench E: general 18

original trench 12

extension 14

SE corner 42, 96

SW corner 38, 86, 92

E side 62

NW corner 70

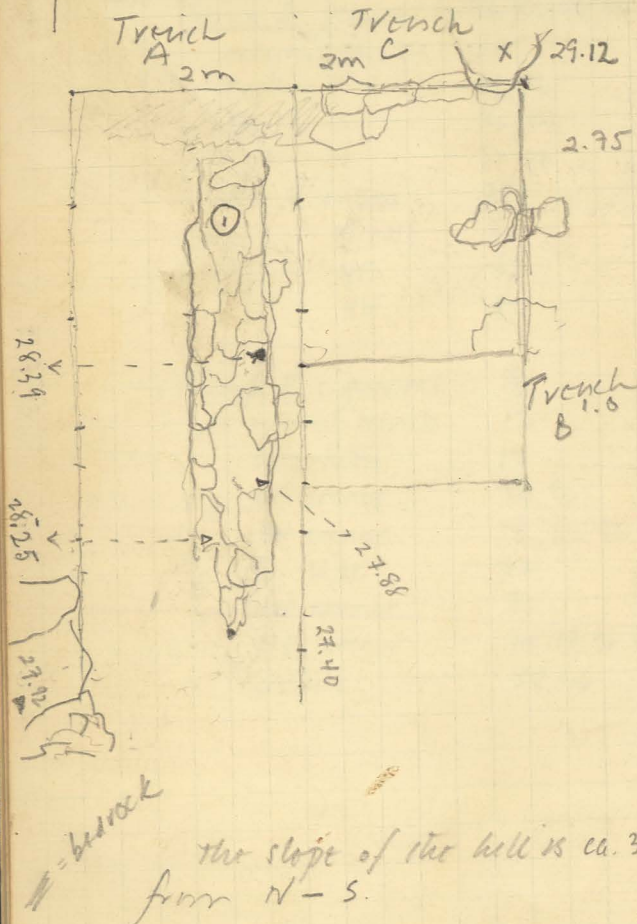
NE corner 74, 78, 96, 98

details 58, 66

Plans: Area F

4  
2  
←

1m

length of wall: 4.36  
greatest width: 0.65

Trenches A, B, C

Fig. 1

22/vi/66

5

Kephala:

June 22, 1966

KL - AREA L

Nikos Marromatis as pickman + his brother Augustis started clearing the wall with brooms. All of trench A was cleared, of trench B and the area to be dug as extension called Trench C. The surface earth was thrown down the hill below last year's dump - on what appeared to be bedrock.

On the cleared surface appeared several sherds + one obsidian chip.

Trench is an extension of A to the E and B to the N. It measures 2m - 2.75m E-W, N-S. Spikes were driven at the edges + tamping attached.

0.800 The first pass was made in Trench C. The ground is dry, light brown, fairly hard, with a few roots + chips of stone. The pass is about 10 cm deep. Chips of obsidian found in this pass were combined with the surface material.

4  
↑ N  
1m



29.12

Trench C

19 obsidian chips

Fig. 2

22/vi/66

7

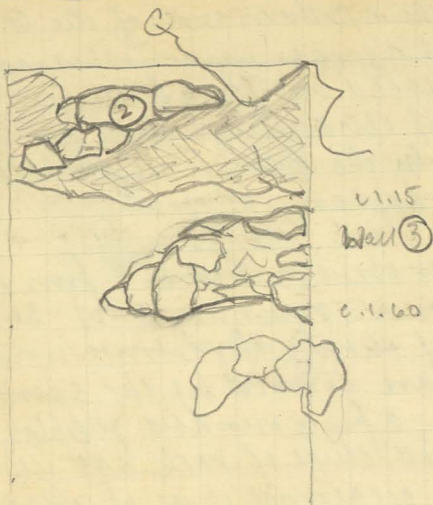
At the northern end of the trench bedrock appears under what appear to be placed stones. A few more small chips of obsidian & 1 sherd among the rocks in the E half of the trench stones appear - a wall?

Most stones are 1-1.50 from N end of trench - running E-W. bedrock to N of them. The stones now exposed are covered by the same dry earth; a few rounded pebbles among it. Small chips of rock are in the soil & occasional chips of obsidian. More clumped stones appear at E end of trench just below the ones just described.

Just to the N. of the stones which lie on the surface by the N. end of the trench very small chips of obsidian & a few sherds were in the earth - same sort of earth as before. Also small chips of the greenish micaous silt & shale as before.

All the stones were swept - and sherds & obsidian collected. Box was marked ΕΙΣΦΑΡΕΙΑΝΑ. A few more rounded pebbles appeared among the bedrock's fallen stones.

8  
↑ N  
1 m



Trench C

12 obsidian chips

Fig. 3

22/vi/66

9

Another pass was begun - also working from S → N. The earth is the same. In the S. part of the trench where there are no stones obsidian & sherds appeared in this pass in a very small quantity - 10 small sherds, 4 small obsidian chips.

The wall projecting from the E side of the trench is named wall 3.

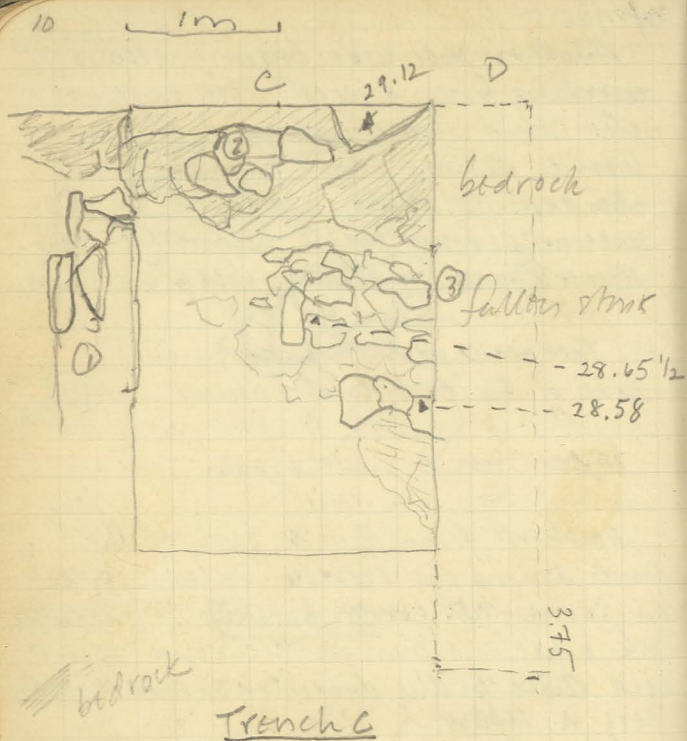
10.00 ten minute break.

No sherds from the N part of the trench among the stones except for the same NE corner by the triangular rock which is our measuring point - and these badly disintegrated. Earth here is redder.

Three sherds & obsidian collected named KL-4. 2nd cut below surface of Area C. KL-6.2 obsidian

Another pass begun from the S. A few sherds appear; a handful of bone slivers in the middle of the W side of the trench; a few obsidian chips. Bedrock - crumbly - and earth comprise the S part of the trench.

The clearing of the stones in the N. part makes it clearer that they



the bedrock to E of stone on wall 2 stone cut away for stone. the N edge of wall 2 appears, resting on bedrock. the N end of wall 1 appears - abutting the bedrock which appears to have been cut for stone of wall 1.

fig. 4

Trench D - to be continued tomorrow, not today

are lying in random positions, most on top of cushions of earth. None have been removed but merely cleared. Almost no shards appear among them. Perhaps the stones from "wall 3" were once placed on top of the bedrock immediately adjacent to N and have fallen?

This pass showed that bedrock lay directly behind wall 2 to the N at a depth of 0. Lower than the highest preserved level of the stone. The bedrock was also cleared just to the N of wall 1 to reveal the N limit of the built portion of the wall. In clearing the NW corner of the wall a small chunk of carbon & several obsidian chips appeared.

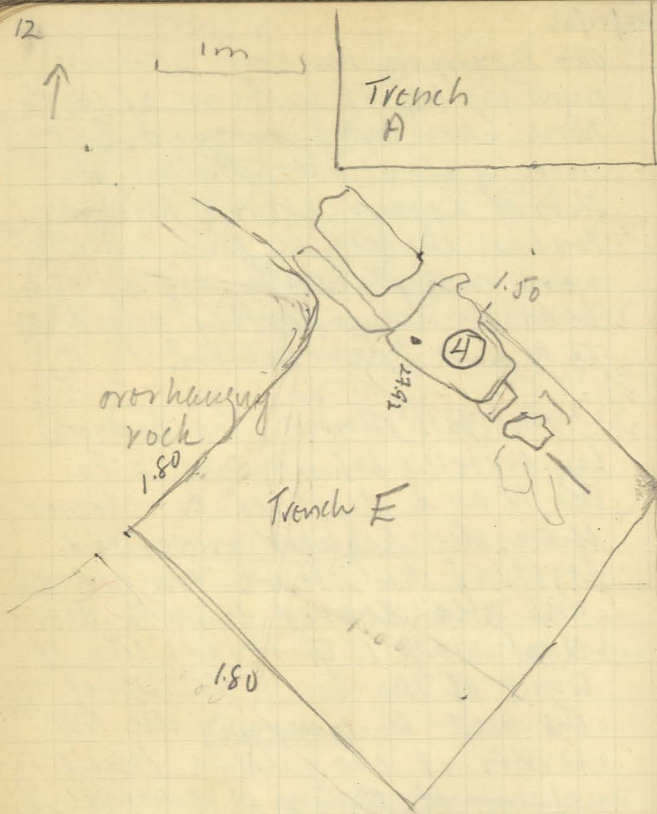
All surface cleared & obsidian & shards examined. KL-5 3rd cut below surface 5 obsidian chips

KL-6.3 obsidian

Trench C was extended 0.70 to the E; Trench B was extended 0.70 to E.

New Trench D measures 0.70 E-W, 3.75 N-S. 14 obsidian





Trench E

Fig 5

22/vi/64

2.00: Trench E

The area W. of the Trench A - where last year's surface excavation had suggested the possibility of a hearth was cleaned.

The area we are uncovering measures 1.50 along the wall on the E, 1.80 along the heavy overhanging rock which runs NE-SW and 1.80 to the S.

The earth is dry and light brown, a few chips of obsidian appear in the first surface cut. Scattered rocks emerge - mostly red up.

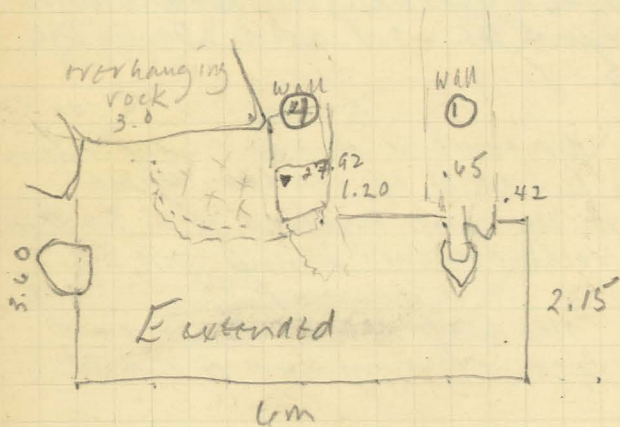
The wall is well-built and appears to continue to the SE.

Nikos is using both the long handled & short handled picks - his brother helps him sweep with the water broom.

The wall measures 1.1m from overhanging rock, 0.70 at widest & 0.80 above present depth of ground. Named wall 4

Cont over

14  
 N  
 ↑  
 1m



Trench E

fig. 6

22/11/64 E cont from 13

15

In this surface cut only 3 sherds appeared and 6 chips of obsidian. They were combined with the surface material from C - Et. partiana.

The stones in this corner - many upended - fallen - from wall? More area will be included in this portion for surface cleaning.

Trench E extended:

The area cleared now measures 6m along the S. edge, 2.15m on the E, the N boundary cuts across wall 1 and borders on the S most large stone of wall 4 - then extends N to include area under overhanging rock - which almost completes the 6.0 length - W edge measures 3.60

But wall at right angles to overhanging rock on E = wall 4.

Few sherds appear in the extended cleaning, many obsidian chips.

The earth is the same as before in this area, except among the fallen stones where it seems slightly darker.

cont over

22/11/66

E cont from 15

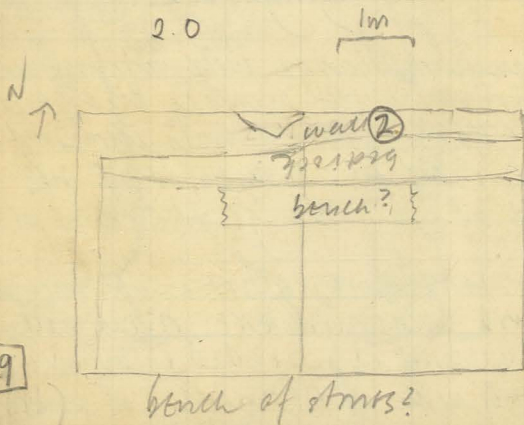
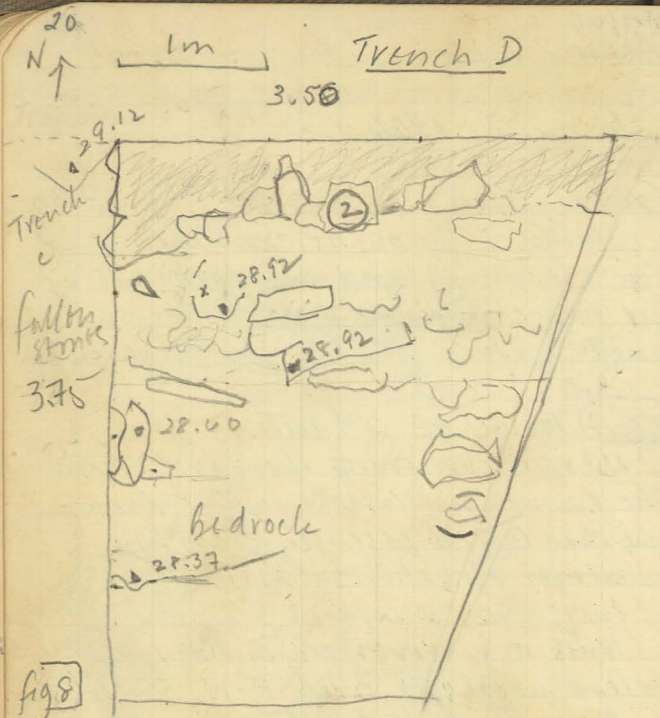
With this final pass it seems that wall 1 extends further to the S - but the upper course of stones has disappeared.

The trench between wall 1 and wall 4 is filled with small chips of stone, and slightly redder than the other earth. Under this surface layer is bedrock, the contours again suggest that it might have been cut away but it is not clear. This bedrock extends across E-W from under wall 1 to under wall 4. It extends further to S under wall 1.

All surface material from K2 combined under lot (K2-6) from this surface pass - shovels few + 33 chips of obsidian. K2-1  
A few other surface chips added.

4:30 work ended.





23/1/66 KL-Trench D

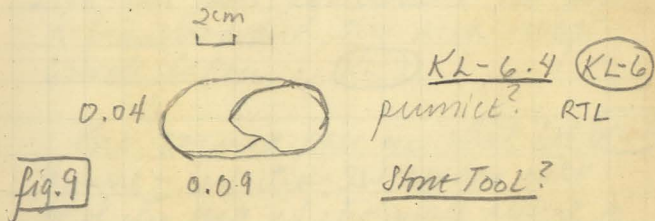
21

Surface clearing by Thanassis Lazarou + Nikos Servos E of Trench C. Thamm removed. Surface shows both bedrock in places + stones - fallen? Most of the top edge of the visible stones are jutting out at angles - not flat. No pottery, a few obsidian chips.

(KL-6) the first pass be combined with the surface material found in the clearing. ΕΠΙΦΑΝΕΙΑ. 46 obsidian chips. KL-6.1

In this first pass Thanassis broke with his pick an ellipsoid chalk-like stone - kept. Found just below surface 1.0 from N extent of trench, 0.62 from W edge. X on plan. Remains for next pass.

This pass is uprooting numerous large wild onions.



This trench appears to have an extension of wall 2 - and fallen stones from it to the S.

Trench E cont from 19

10:00 ten minute break.

this pass continues. Nikos<sup>2</sup> goes to help clear the area between wall 4-1 and the part of Trench E further to the S & E of these walls.

1.0 from the E. end of Trench E - 10-20 from S. end - he finds a handful of small shreds.

Throughout the area of Trench E close to and under the overhanging rock are stones mostly rounded which appear fallen.

2:00 this pass continues. The pass is finished and the area swept. levels taken (KL-7)

The second pass in this lot (KL-7) begins - in the SW corner just N of the end of the wall about 10 cm from where the 2 large shreds appeared are ca 15 more large pieces - perhaps from the same pot -

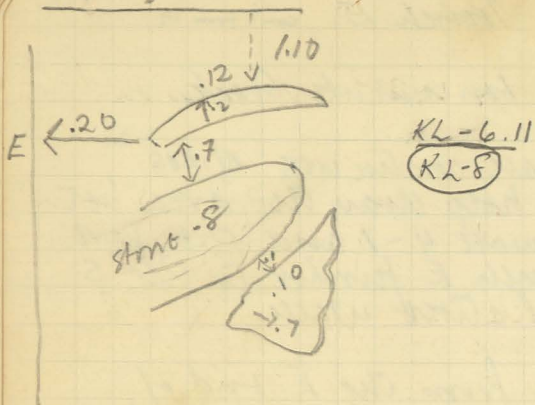


Fig. 10

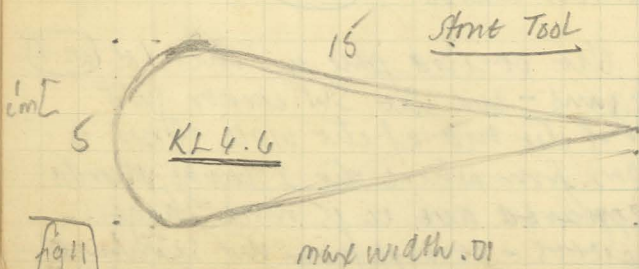
Trench D.

Fig 11

## Trench D.

(KL-8) KL-D 2nd cut below surface  
S-N. begins.

20 from E edge of D, 1.15 from  
S - shard in ground - .10 long.

bedrock from the W edge of  
the trench D. 6.75 from S. edge  
continues over from Trench C -  
another cross wall?

1 large obsidian blade tool, 1  
small, and 33 chips found in  
this pass. KL-6.5 (KL-8)

Second pass of cut 2 begins -  
also w/ (KL-8). This earth appears  
to be resting directly on bedrock  
in the S. part of the trench -  
hard, dry earth filled with  
small chips of rock - flakes of  
bedrock.

2:00 Second pass continues. Rocks  
are all thru the soil

Kph 6.2 KL-6.6  
.25 from W edge of Trench Junt .08  
from S edge of bedrock - stone tool -  
very flat white stone .15 long  
.05 wide at top, 1.10 ft N edge of  
CONF D. 29

24/VI/66

## Trench E cont from 23

they are kept separately.

the pass - pass 2 of cut 2 -  
continues - in the E part  
of the trench in hopes of  
finding the limits of walls 1 + 5.

the trench is swept for photo-  
graphing. 1 from SE

June 24 1966

7:30 Nikos continues clearing  
the SE corner of trench E trying  
to reveal the walls. this pass  
belongs to pass 2 of cut 2  
(KL-7).

Trench E extended in SE corner  
ca. 10 cm to S + 3m E-W.  
First pass collected with surface  
material from KL entire (KL-6)  
Επιφειρακα. 22 obsidian chips.  
KL-6.1

the next pass is combined with  
lot (KL-7), 2nd cut of Trench E.  
cont. p. 31



June 24, 1966

9:00 photographs JEC

- 1 (14) Trench D fr. South
- 2 (15) Trenches A, C, + SE corner of E fr. N.
- 3 (16) Trench E fr. SW
- 4 (17) Trench E fr. SE

June 27, 1966

photographs JEC

- 1 Trench E fr. SE
- 2 Trench E fr. SW

## Trench D

Trench D. KL-6.6 (KL-8)  
 Nearby among stones fallen just S. of well [2] - another flat stone-kops with pottery. Feather found.

This pass continues clearing the earth from the stones. Flint (chert) chip found with obsidian (white) KL-6.8 (KL-8) xph. 6.3  
 Obsidian chips from this pass: 44  
 To the E the air fall is scraped - Dave removed a grade. We are trying to decide where to extend the trench in hope of the limiting wall of the hole appearing.

The trench is swept for photographing. 1 from E

June 24, 1966

Trench D Exc

7:30 Trench D is extended 3.60 to E. New portion continues the N. boundary of original Trench D but extends only 3.05 to S.  
 The first pass is combated with

24/vi/66

## Trench E cont from 27

In this extension of Trench E at the SE corner fallen stones appear and what seems to be another E-W wall 75 cm to S of wall 5. The plan of this corner still unclear.

2<sup>nd</sup> pass begins. Combined with lot (KL-7) as cut 2, pass 2.

10:00 ten minute break.

This pass is extended to N. of wall 5 into old trench. Chips of bed-rock come up with earth.

Wall 5 continues to E. But in the continuation unearthed in the new extension the line of the wall (if this new part does belong to wall 5) is further to the S. A few obsidian chips, almost no shards.

Therefore trench E was extended so to the S along the S. edge for another 1.40 to the W. See fig. 12 p. 26.

The first pass will be combined with cont. p. 35

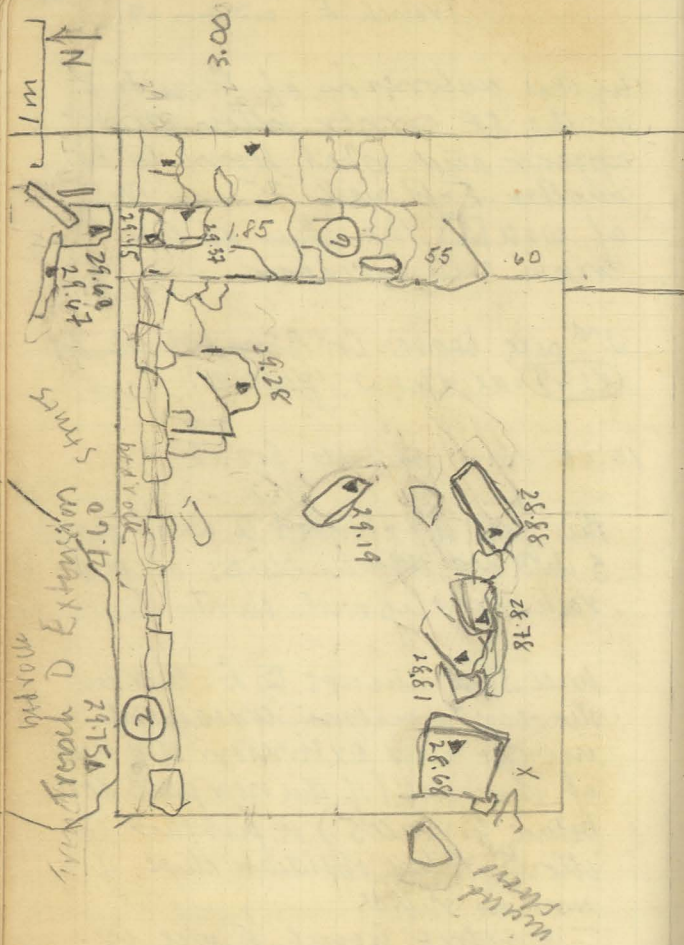


Fig 12

Trench D EXT

24/VI/66

## Trench D EXT.

Surface material from all of KL:  
 επιφανεράκι (KL-6) Nikos<sup>2</sup> + Μανώλης.  
 Earth the same. First two passes  
 combined in this lot.

In the E part of Trench D ext.  
 large stones laid in a wall - No. 6  
 running N-S appear. The earth  
 here is much harder than to the  
 W. Pieces of poorly fired soft  
 pottery - layers of red & black  
 clay appear in this earth over  
 the stones. Perhaps more wall  
 continuing to the E? Clearing  
 in this pass - 2<sup>nd</sup> of surface  
 lot continues.

Basilis Berkatzi is helping clear  
 the trench

10:00 ten minute break

2<sup>nd</sup> pass of surface cut continues.  
 Some obsidian, always no blades.

111 Small chips. KL-6.1  
 Cut 2, pass 1 begins (KL-9).  
 This should make this area equal  
 in cleared soil to the original  
 Trench D. KL 6.10 obsidian chips  
 cont. 37

the surface cut (Kh-6)  
 empaveraki. Same earth. But  
 No chards or obsidian.

2nd pass belongs to cut 2 (Kh-7).  
 More "wild chards" at W. end  
 of the extension of Trench E.

Both Niko's working here with  
 Augustus.

20 cm just S. of wall 5 cleared  
 fr W to junction & now at-  
 tention - this reveals limit of  
 wall clearance. NO chards or  
 obsidian in first pass (surface  
 cut)

2nd pass - combined with (Kh-7)  
 No chards.

Cut 2 pass 2 begins in new  
 portion of Trench. No chards.  
 A few chips of obsidian.

From all of pass 2 cut 2: 89  
 obsidian chips.

Pass 3 of cut 2: from SW  
 corner outside (?) wall 5<sub>2</sub> along  
 cont p. 39

36 to start Trench D

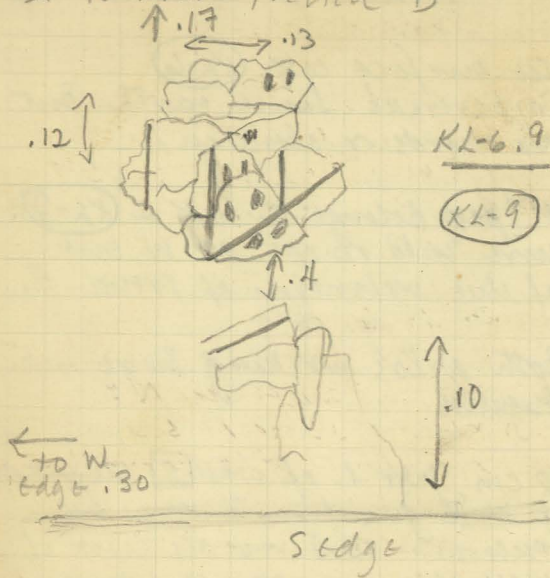


fig 13

25/vi/66

Trench D. Ext.

37

In this pass 1 of cut 2 in SW corner - large fragment of pot with incised line + dot design. KL-6.9 (KL-9)

June 25 1966:

7:30

Cleaning continues in NE corner and along N edge to N - up to the exposed bedrock - new extension to clarify this corner of Trench D Ext.

beginning new lot removal of structure (KL-10) 2 struts resting on earth removed. obsidian

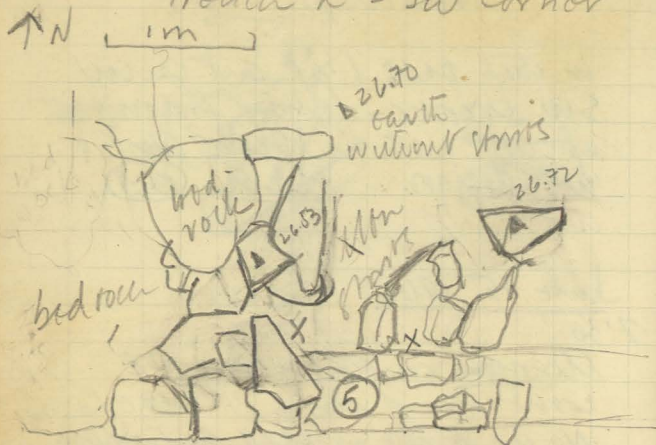
KL-6.13

analysis also extends this Trench in SE corner c. 1 m along S edge - S to the exposed bedrock

Mud wall appears - covered by c. 10 cm earth N-S. Includes bedrock

Area opened 1.50 to S. the cont. p. 41

## Trench E - SW Corner



x = large frags of pot

Fig 14

## Trench E cont from 35

S edge of trench E outside wall 5 and along SE extension, and into SE corner up to bedrock at end of wall 4 + 1. Material will be combined with cut 2 (KL-7).

Another extension of trench E in SW corner: 50 to W from S limit of Trench, 1.25 N-S.

SE corner:

First pass - will be collected with surface material.  
Nothing found.

SE

Cut 2 pass 1 begins. (KL-7)  
Cut 2 pass 2 begins. (KL-7)  
Stones in this corner - none up ended - but still unclear if this represents a bull corner.

Cut 2 pass 3 continues - in SW corner along S of wall 5 + SE corner - combined with (KL-7) obsidian chips. KL-6.7

Trench E extended: SW corner 1m to W all along W edge  
cont. 43

27/VI/66

## Trench D Exc.

entire length of the Trench -  
all along the S. edge.

Material collected (KL-6)

No stones appear - bedrock  
below c. 10 cm. carit.

2:00

After sweeping the corner  
Fraser's begins to remove  
stones. This material will be  
collected in lot (KL-10).

Shards are removed from surface  
exposed by previous pass - they  
go in that previous lot (KL-9).

RTL

Pat - large shards KL-6.11 see fig 10.

obitidian in (KL-9): 39 chips.

obitidian in (KL-10) so far: 58

June 27, 1966

Fraser's has replaced the  
digging in Trench D Exc. He  
is clearing around the stones,  
not removing any and this  
material will be combined  
with cut 2 (KL-9).

cont p. 45

42  
↑ N

# Trench E - SE corner

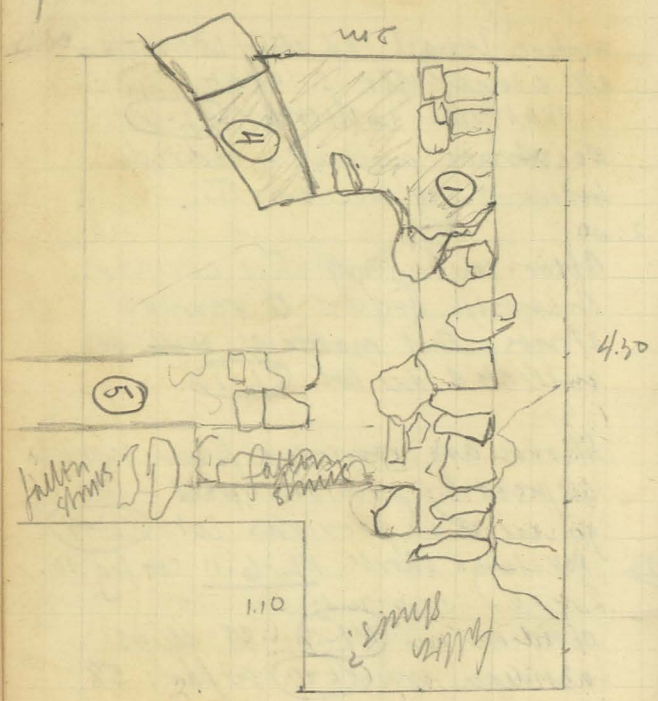


Fig. 15

1m

25/11/66

43

# Trench E cont from 39

to establish SW corner.

Trench E extended: SE corner  
.60 to 5.1.50 along S edge,  
to establish SE corner.

SW corner: first pass - surface  
material KL-6

June 25, 1966.

7:30

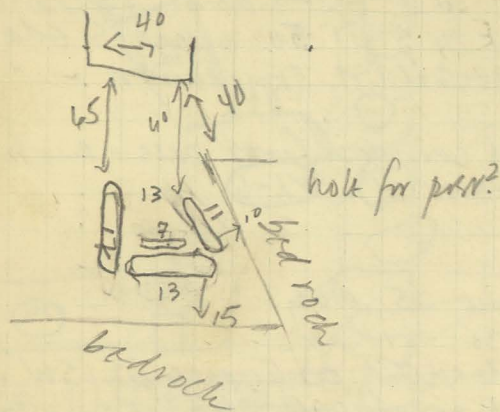
Cleaning continues in SW +  
SE corners to clarify corners  
of room.

lot KL-11 removing stones begins.  
obscure KL-6.12  
in the NE corner earth is at  
level 27.07 earth in NW c.  
corner 26.90?

All stones removed rock on earth.  
2 removed

Niko<sup>2</sup> also continues opening  
trench in SE corner - 75 cm  
more to S + 2 m along S  
edge of trench. Stones fill the  
extension in that corner opened  
yesterday and we are marching  
cont. p. 47





Trench D, post hole, S

Fig 16

In SW corner of Trench D Ext -  
 not to bedrock - cut out? to  
 S+E; S of large block at W  
 edge of Trench: upright small  
 stones in  $\Pi$  arrangement -  
 support for post?

Frazer's findings pass of cut 2  
 + continues another pass to clear  
 earth - between wall 6 and  
 W limit of Trench D Ext.

8:30-9:00 break

Frazer's findings that cut (27).  
 He begins clearing small stones  
 + earth from center of trench  
 ca. 1.0 m from wall 6. in  
 the center of the fallen stone  
 area.

Frazer is clearing N-S line  
 ca. 75 cm from W edge of  
 Trench D Ext - is there a N-S  
 wall just to the E of this line?  
 Stones removed are small; area  
 cleared ca. 25 cm. E-W.  
 Almost no shovels. He continues  
 clearing ca. 50 cm to E

## Trench-E Complete Plan.

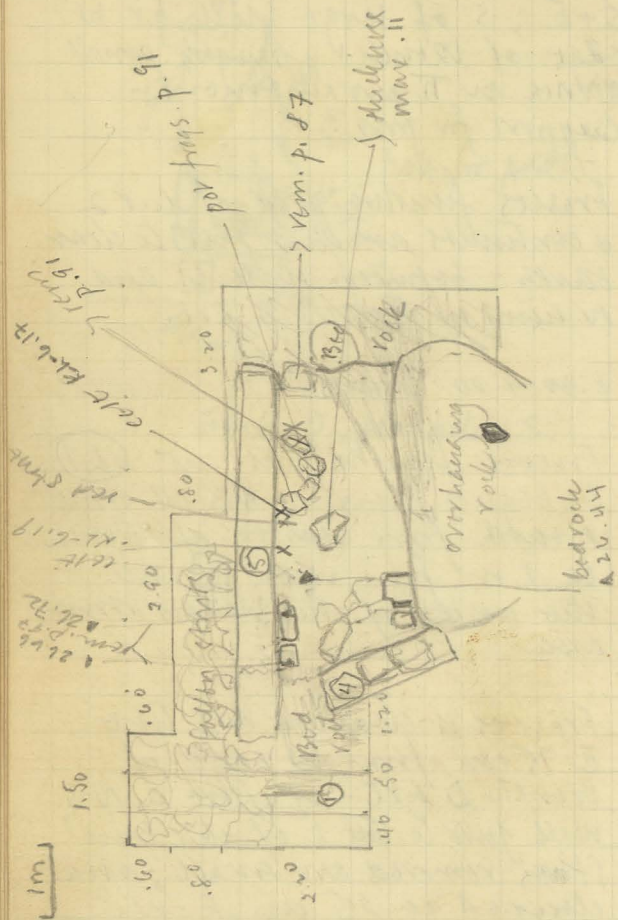


Fig 17



25/vi/64

Trench E cont from 43

for some definition of the end of this N-S wall. [1]

2 more stones in NE corner resting on earth removed. Earth dumped but same, some roots. Few shreds.

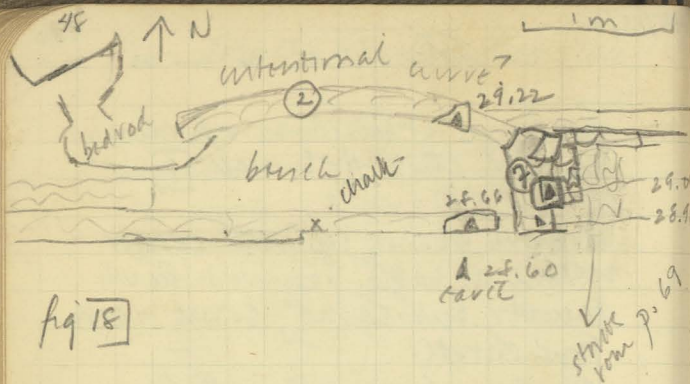
Another stone removed. Cleaning around remaining stones. Still no clear structure. Further clearing of dirt contents.

Extension in SE corner - more stones & bedrock. Very few shreds. Pattern of stones still unclear (KL-6)

The circle of stones which all upend into air removed. roots & earth underneath. Several other stones removed in this half of "room". In NE corner by wall & overhanging rock - stones appear underneath lying flat. Cleaning contents.

In extension at SW corner - bed-rock.

Ca. 1.20 from SW edge of  
ent. p. 51



Trench D + Ext  
Exedra 1

27/VI/66

49

Trench D EXT. + D.

along this N-S line. The small loose stones are cleared in this N. portion of the trench all the way W. to the limit of the trench. No N-S wall appears.

This clearing and removing of small loose stones extends further W. into trench D.

2:00

We begin clearing stones at E wall 6 by the S. limit of the top wall 2 - moving towards W. Medium sized and small stones removed - still no pottery nor plain to stones left.

It is possible that we are dealing with 2 building periods - the first of well-built walls 1 + 6, the second of lighter built walls such as 2 and others suggested by lots of small stones not quite parallel with 1 + 6 and resting on earth.

25/vi/66

TRENCH E cont from 47 51

wall [5] - small frag. of carbon-  
1300 wood among fallen stems.

Stem Removal continues. To  
N. of removed circle of stems  
was heap of small stems resting  
on more than 10 cm. dirt.  
Stems underneath.

1.25 fr. S edge, 4.0 fr. E edge  
flat stone  $\begin{matrix} E-W \\ 30 \end{matrix}$  -  $\begin{matrix} N-S \\ 26 \end{matrix}$  in situ?  
Δ 26.82

In the clearing of the E-W  
wall [5] appears that the  
row of stems in the SE  
corner of the trench, just  
below there do not form  
another wall but are fallen  
from this one.

2:00 Niko<sup>2</sup> continues clearing  
the E-W wall [5] + fallen stems  
to S of it.

Niko is removing stems -  
Phil in the NE corner

In NE corner c. 5 cm. from wall [4]  
E + c. 5 cm. from overhanging  
rock - flat square stone  
33. N-S, 35 E-W. Δ 27.02

cont. p. 55

28/vi/66

Trench D EXT + D

wall [2] in NE corner of Trench D EXT is resting on a layer of dirt underneath which is a wider layer of stones - many now broken, jutting out towards S. this suggests 2 building periods.

As wall [2] continues to W although placed over bedrock - a layer of earth lies between this bedrock and stones abvt. 42 obsidian in (K-10) K-6.13 so far.

June 28, 1966

light rain

Large stones continue to be removed, earth beneath them, earth cleared. Care is taken to determine cross-walls, if possible, of lighter construction - perhaps of slightly later building. This lot is combined with (K-10)

Wall ? 1.50 - 2.90 from Wedge wall. Stones clearly fallen on surface [6] removed for 1.20 to S. of N edge of wall [2] along 3.0  
cont. p. 57

27/11/66

Trench E cont from 51

Nikos<sup>2</sup> is cleaning struts in SW corner - small struts about the bedrock.

Nikos<sup>2</sup> continues to clean down in SE corner - possible N-S wall continuation?

The barch in the W half of the "room" is cleared down into pass. Now all area is the same depth except for the arc structure in the NE corner.

obedient (KL-11) so far: 40  
 Work ends early 4:00 - for moon to return to H. line for pay.

June 27, 1966

6:15 Nikos is cleaning in Trench E 50 cm to N of wall [5] along it E-W and beginning to remove small loose struts. (KL-11)

3 struts just N of this wall c. 3m from E removed. Earth emb.p. 59

from E - W.  
 Error? parallel to no other  
 N-S wall ca. 3.0 to W. of wall  
 [6] ca. 50 S of wall [2].  
 Small stones cleared from on  
 top of this possible wall.

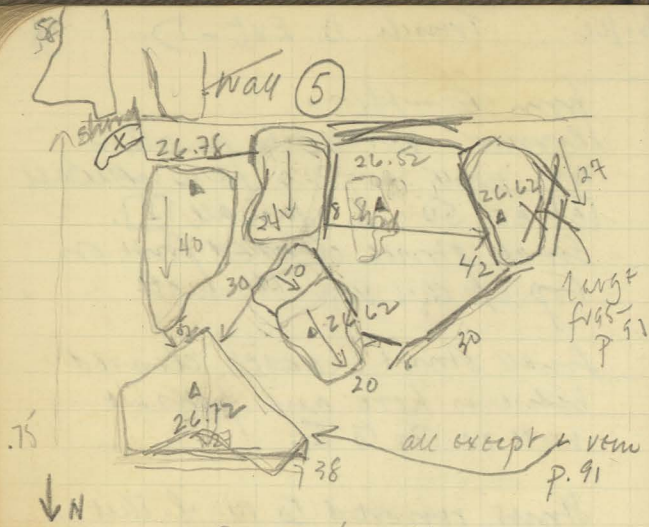
Small stones + earth cleared  
 between here and possible  
 wall ca. 30 to E.

Stones removed to W. of this  
 "error" ca. 3.00 - 3.25 W  
 of wall [6], ca. 1.20 S. of  
 wall [2]. These are small  
 surface stones - out of place.

Stones just S. of wall [2] ca. 3.20-3.60  
 W. from wall [6] - fallen askew -  
 removed.

Mass of stones fallen - in area  
 c. 75 S. of wall [2] - for c. 1.00  
 E-W along this wall. Highest  
 one removed - most upended.  
 1.30 - 2.30 E of W edge of  
 Trench D.

Below fallen stones 2.90 to 2.00 E  
 from W end of Trench D appear  
 cont p. 61



N. Edge of Wall 5 - center  
of room.

Possible pothole? built structure?  
S center of House E

fig 19

27/v/66

Trench E

59

underneath. Very few chords.

Nikos continues this pass just  
inside wall 5 - in SW corner  
chords occur - underneath  
those found in this corner in  
lot (2-7).

In center of wall 5 large stone  
fallen across wall 5 and extending  
N of wall 5 removed. N definition  
of wall 5 clearer now. Nikos  
continues his pass 50 cm to N  
of this wall.

1.20 from bedrock at W edge  
of "room" - along N edge of wall  
5 contact small fallen stone -  
large frag. of pot.  $\Delta$  26.52  
see fig 115

Another large chord 1.70 fr.  
W - almost under wall.

8:30-9:00 break.

Niko is removing stones in  
SW corner between end of wall  
5 and overhanging bedrock.  
Small stones removed large  
one roughly parallel to bedrock,  
cont. p. 63



28/11/66

## TRENCH D - DEXT

2 aligned stones, laid flat  
+ parallel to bedrock. Possible  
continuation of lower course  
of wall [2] which has been  
throwing further to W.

These stones continue to  
the E under the wall? with corner.  
This lower stone N. 20 below  
wall? with corner next to  
it to E.

Hard-packed earth on top of  
these stones + some clods +  
obsidian chips.

Further cleaning at this  
point shows that these stones  
are not large rectangles but  
more irregular - although  
they still seem laid flat  
at same level and along  
same S line of a E-W wall.

8:30 - 9:00 break

10:00 JLC -

approx removal of stones -  
and possible 2 bldg. periods -  
thinks stones in E-W line  
S of bedrock + wall [2] - N -  
probant bench at N edge of  
room.

cmr. p. 65

Trench E - E side of room

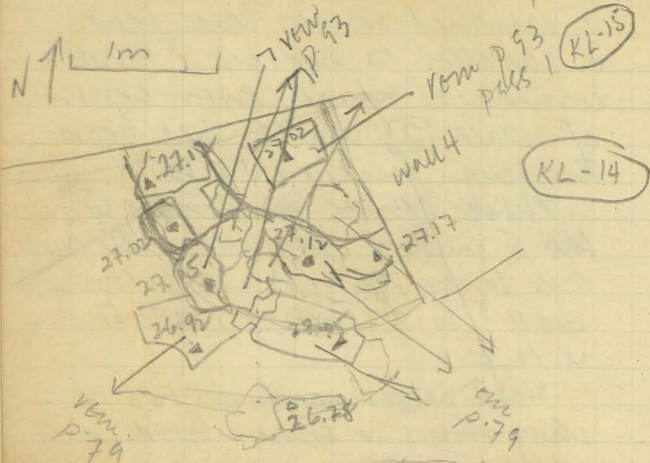


fig 20 wall 5

29/vi/66

KL-15

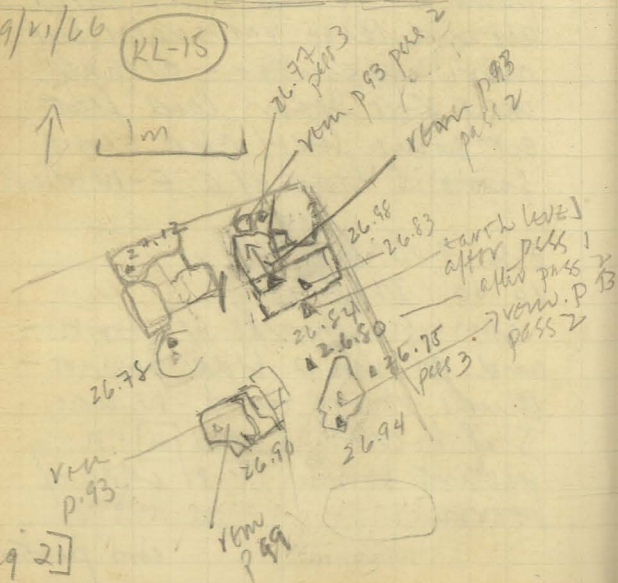
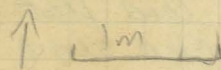


fig 21

27/vi/66

Trench E

63

Niko is clearing dirt and removing stones in the SW corner of "room" and in a 50 cm. pass N-S along the W. edge of projecting bed-rock, inside "room". other flat stones below.

Nikos began removing stones between built (?) and in NE corner, wall 5. Ca. 70 cm N of wall 5 and 1 m SW of wall 14.

Nikos is removing stones  $\approx 1.00$  from W edge of "room"  $\approx 1.20$  from wall 5. Stone also removed ca. 1.50 from W edge, close to overhanging rock. Very few shards, some obsidian.

Earth now free of large stones in center of "room"  $\Delta 26.70$ . fairly level with flat stones in NE corner & center of wall 5 & near W edge of wall 5.

Two more large stones c. 80 cm entr. 67

Large stones in clump S  
of wall [2] just W. of 2  
- laid stones uncovered -  
removed.

Matted earth & roots under  
neath. A few shards & obsidian  
chips. Very large stone - removed.

From "corner" to bedrock at  
W edge of Trench D - loose  
rock & stones cleared in  
front of wall [2] .70-.75  
towards S. .30-.40 deeper  
than top of wall [2] - still  
all dirt & scrap of rock & stone.

2:00

We continue to remove stones  
fallen in earth S of the  
bench-wall.

This bench wall has been  
uncovered for a length of  
ca. 3.00 running W. from  
"corner" stone - to approx W  
edge of Trench D.  
Under stones removed - almost  
no shards.

75 obsidian added to (KL-10) KL-6.13  
cont. p. 69

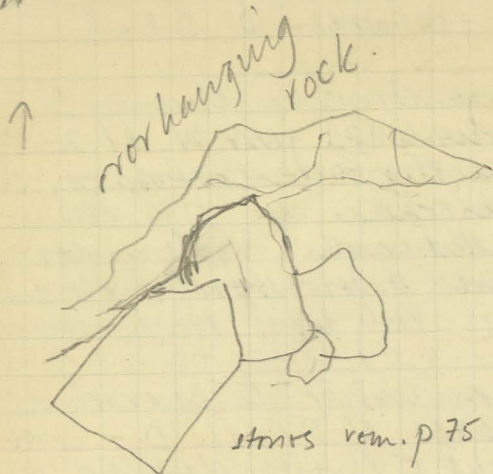


fig 22

Trench E, NW

27/VI/66

Trench E

67

from W. edge of "room" removed.

The area under the overhanging rock - around the bedrock in the NW corner of the "room" is cleared. Small stones removed.

Abutting the bedrock in the N half of this recessed niche are 3 flat stones - on a plant.

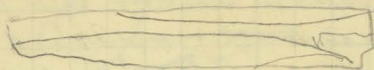
c. 1.00 fr. W edge of "room"  
c. 1.00 from wall 5 5 more small irregular stones cleared from surface. The earth here is at approximately the same level as that to the E now - and nicely clear of fallen stones. Very few sherds.

Several large stones just to E. of projecting bedrock - fallen from original wall? removed.

Earth removed just to S. of E edge of "bitul" arc - leaving emb. 71

KL-6.18

.055



.01

fig 23

JUNE 29, 1966KL-10 continues:

Stems removed: see p. 94.

Kph. II KL-6.18: obsidian blade KL-10for inv. c. 1 m W of wall 6.Searching for E edge of possible  
cross-wall - none found.Very few shards in this stratum re-  
mained.

Under view of irregular large  
stems to S in trench - more  
smaller stems - but probably  
not wall

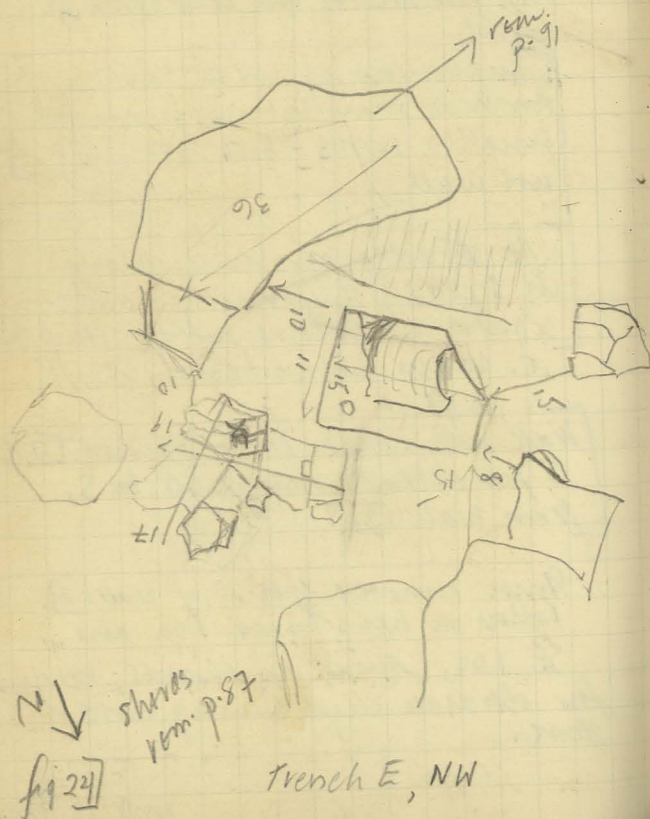
At E edge of bench along  
its S side, different cavity -  
lighter in color & softer see p. 94  
c. 20 cm below top of bench.

▲ 28.60

Wall with corner stem named 7.  
So far extends only c. 60 to S.  
from wall 2.

Stems removed just E of wall 7.  
Fallen in heap for ca. 1.00. and  
SE 1.00. Almost no shards, very  
few obsidian chips among these  
stems.

Mrs. Kirtledge spotted incised  
shard in side face of wall. [1]  
2:35 from bedrock at N end  
of wall. Shard was on W  
edge of wall. Removed and  
placed in surface box (KL-6)  
reassigned to (KL-2)



2 projecting irregular stones.

2 more stones in SW corner  
of "room" - above flat stone -  
removed. These were just to  
W of semicircular arrange-  
ment of stones inside  
which shard was found -  
and just to E of flat stone.

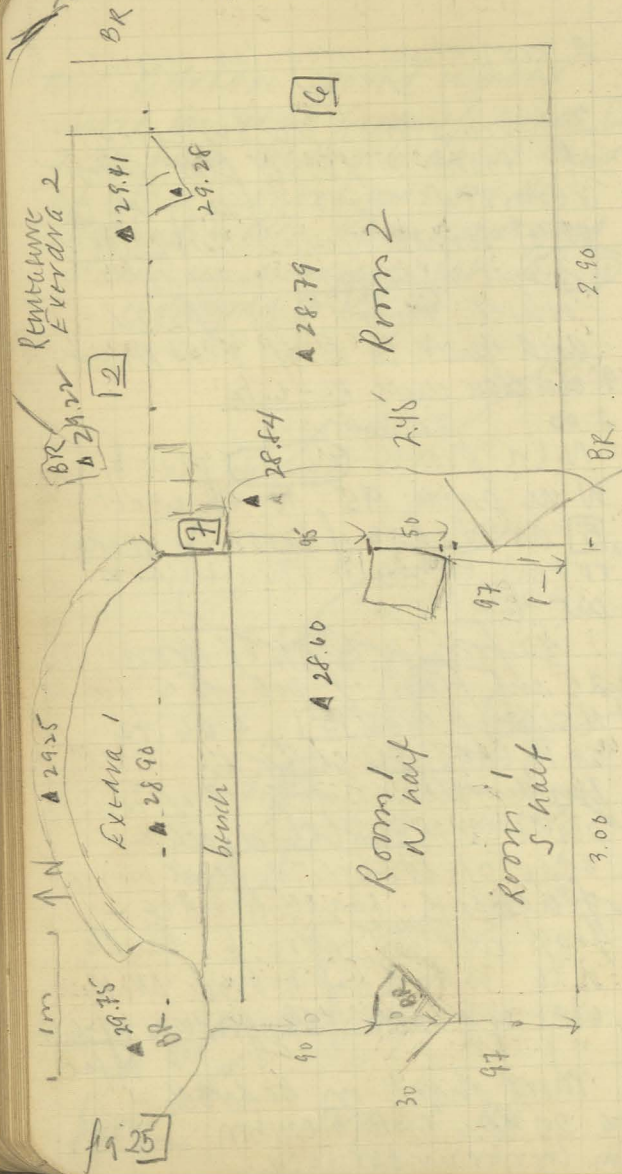
59 obsidian chips KL-6.12

2:00 photographs

Nik's marks (KL-12) pass from  
W in area .75 N of wall  
[5] at W edge of "room" - across  
"room" to built structure =  
cut 4.

.40 from W edge of room  
25 cm frags. of pot. 1.15 fr.  
N side of wall [5]. 26.72  
at W edge 26.65 at E.  
Further cleaning to W of this  
point toward bedrock at  
edge of trench reveal more  
fragments. large handle -  
frags rest on <sup>in situ</sup> bedrock. Handle  
in ch. 30 to E of bedrock at W  
edge of room. 59 obsidian KL-6.14  
so far

More shards on bedrock  
ch. 20 cm to E + carbon con. 75  
m corner under rock.



June 30, 1966:

Measurements taken. D-D Ext. divided into 2 portions. W + E = Room 1 + Room 2.

Room 1: N. from wall [7] to bedrock c. 3.10, S. from wall [2] → c. 2.45 S. of [7] etc p.

Room 2: between wall [6] + wall [7] S. of [2]; same S. limit. etc p.

KL-16 "Extra 1" earth removed between bench wall + wall [2] to N, N of room 1. etc p. 76

pass 1: A 28.90 - 28.80 earth + irregular stones.

pass 2: A 28.80 - 28.78

many shards A 28.78

[etc: material N. of bench wall is fill to form bench photographs

KL-6.21: obs. 3 large 4 cm. chips.

KL-17 "Extra 2" - N. of wall [2] of room 2 - full of fallen stones; N. boundary - bedrock.  
one pass taken - but discontinued for lack of time.

cont p. 74

NE CORNER: 30/VI/66

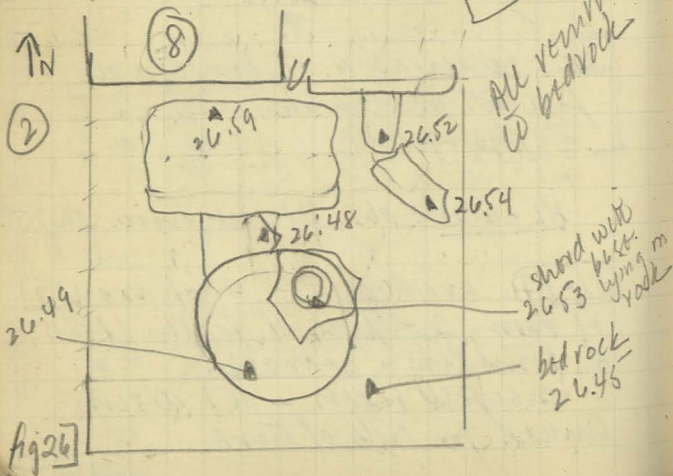
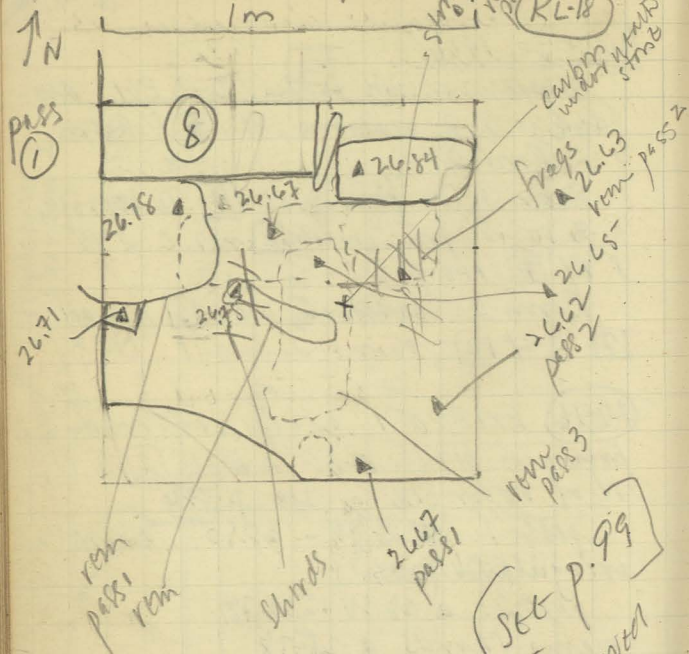


Fig 26

Nikos continues clearing in this pass towards E. (KL-12)

Earth remains covering bedrock in E. half of this "room". Between the large flat stone & the "built structure" - small stones on surface removed. This flat stone continues down into earth. KL-6.14 44 obsidian chips.

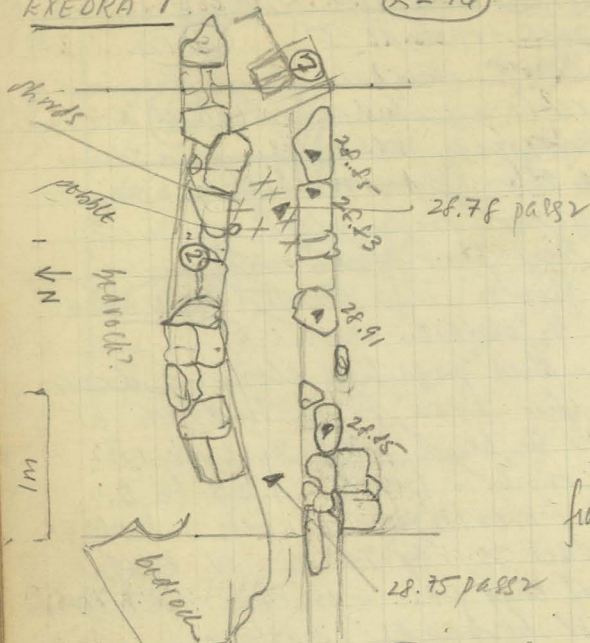
This pass has cleared down the area from bedrock at W to built structure at NE corner - for ca. 1.00 to S. of overhanging rock. Bedrock is reached in W half of this pass - for ca. 1.50 from W towards center.

Bedrock in W half 26.65  
 Earth floor remaining in E portion of this pass 26.66  
 44 obsidian KL-6.14  
 Nikos starts clearing SW corner - stone skewed on wall removed (KL-13). Several shards among & under stones here. Large flat stone just to SE of projecting bedrock removed - another stone below earth between. 3 obsidian chips cont. 79  
 KL-6.15



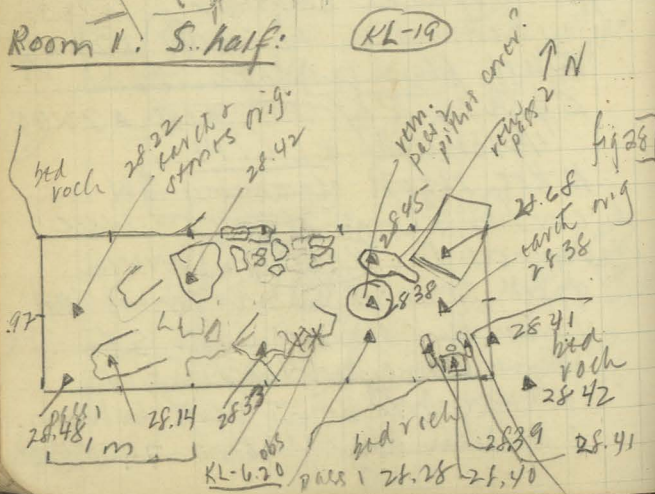
EXEDRA 1:

(KL-16)



Room 1. S. half:

(KL-19)



(KL-19) S. half of room 1 - see below

(KL-20) ▲ 28.78 - out 2.

below (KL-16) Exedra

2 passes - full of irregular stones &amp; some shards - full?

KL-6.24 8 obs. chips

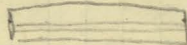
(KL-22) Room 1, see p. 80 ▲ 28.60 - ?

N. half

Kph. 6.15 KL-6.05 Obsidian blade

┌ 1cm

4.8 →



KL-6.29A

chalk sample

earth slightly softer. many shards, chalk frags. shovels. few obs. chips. See p. 80

after pass 1: bedrock in W ▲ 28.52;

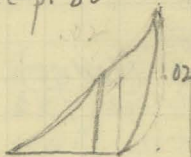
earth in S: 28.45; earth in NE ▲ 28.46

Kph. 6.14 KL-6.23 marble bowl frag. (KL-22)

see p. 80

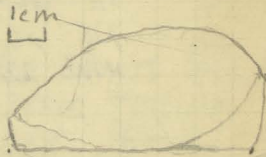
1cm

▲ 28.51



profile

.02



.065

KL-6.28 obsidian chips

(KL-19) Room 1, S. half, .97 S. of outcrop,

.97 S. of large stmt; 3.00 - E-W

see p. 76

very few shards. fallen stms rem-  
ved. err p. 81

78 TRENCH E  
 KL-21 NE corner section  
 NE of walls 8 + 9.

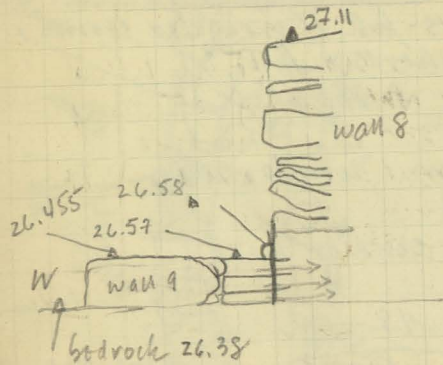


fig 29

bedrock in house E:

SW	26.45	
W	26.45	
SE	26.445	
NE	26.38	
NW	26.63	(ledge)

28/VI/66 TRENCH E

79

Nikos is removing top layer of irregular strata from semi-circular built structure in NE of "room". (KL-14).  
 Underneath large stone lying E-SE - W-NW: .50 by .25  
 smaller strata on inside of this structure removed. 3 obs.

Remaining strata & cavity within ca. 35 higher than bedrock floor cleared in (KL-12).  
 Four pass finished: earth within structure to NE at 26.90 in most S. part, 26.94 in N near overhanging rock.

Large stone c. 55 from rock to N removed - slipped already at angle down outside of structure towards S. Earth between it and stone beneath it.

2 round irregular strata left in SE part of room resting on earth - removed. Shards combined with previous pass from this area (KL-12).

Pass is taken in S half of room from SW corner - along N of wall [5] ca. 80 to the N.

Room 1: N half

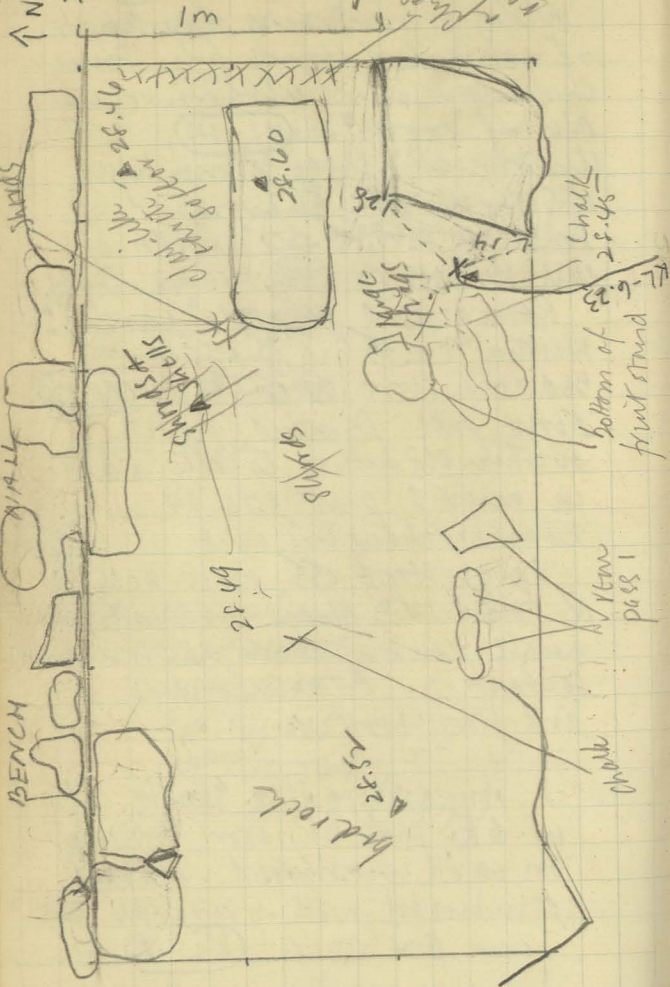


fig 22

KL-22

(KL-19) pass 1:  $\Delta$  28.22 W - 28.38 E  
to  $\Delta$  28.08 W -  $\Delta$  28.28 E

KL-6.20 Bjaalper blade Kph.6.16  
reddish.

1 cm

.055

.03



this cut continued to bedrock  
 $\Delta$  ? all loose stones removed.  
Large obsidian chips appear in E.  
part of cut, beneath fallen stones.  
KL-6.22 11 chips obs. 4 large blades.

July 2, 1966.

(KL-23) Rm I, N half. cut 2  $\Delta$  28.51 - 28.45  
KL-6.29 B 19 obsidian chips.

another pass - reaches bedrock in N. Large  
pot. frags. in pass 1. Round stone rem-  
oved see p. 84 sherds below. 3 pieces  
reach bedrock.  $\Delta$  28.45. Sherds left on  
surface partly under stone.

(KL-19) cont. pass 3

Some earth left over bedrock - now  
noticed and cleared. KL-6.22: 10 obs.  
cont. p. 85

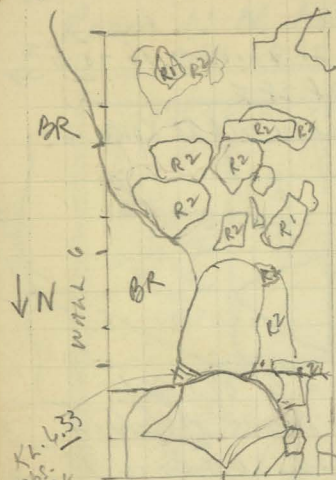
KL-133  
Obs.  
block

fig 23

wall 2

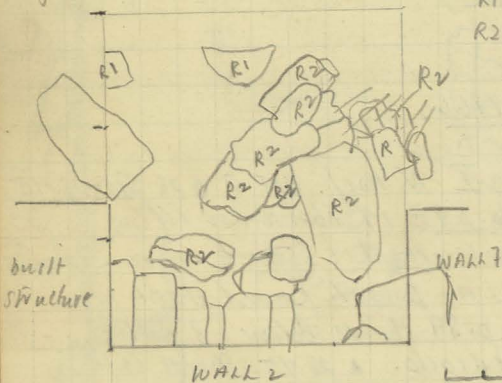
Rm II, NE corner

KL-26

R1: removed  
pass 1  
R2: removed  
pass 2

1m

bench

R1: removed pass 1  
R2: removed pass 2built  
structure

WALL 2

Rm II, NW corner

KL-27

1m

↓ N

fig 24

This is combined in KL-13  
2 small stones from north N  
point of semicircular structure  
just N of wall 15 removed.  
Large irregular stone - just  
S. of flat stone in corner  
removed.

Most debris found under  
the small stones c. 10 W of flat  
stone.

The flat stone extends down  
into the underlying earth.

8:30 - 9:00 break

10:00 JEC: clearing continues,  
agree with JEC about pos-  
sibility of small spur wall  
in NW corner & perhaps  
later semicircular addition.  
To send architect to draw  
plans this afternoon.

8 pass KL-13 continues.

Semicircular structure by wall  
15 remains.

This pass almost reaches bed-  
rock in SE corner. Some shards  
& some small frags of rock.

2nd pass of this lot begins.

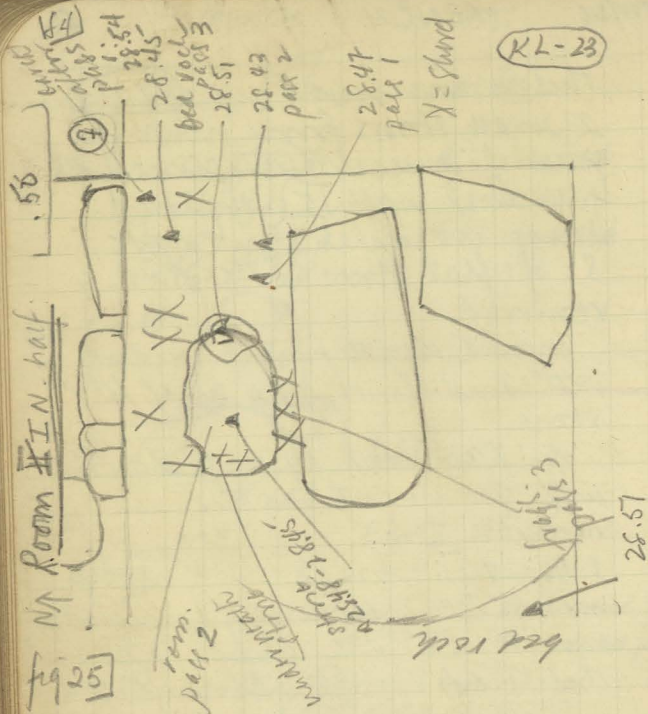


fig 25

Trench D: Room II, S. half (KL-19)

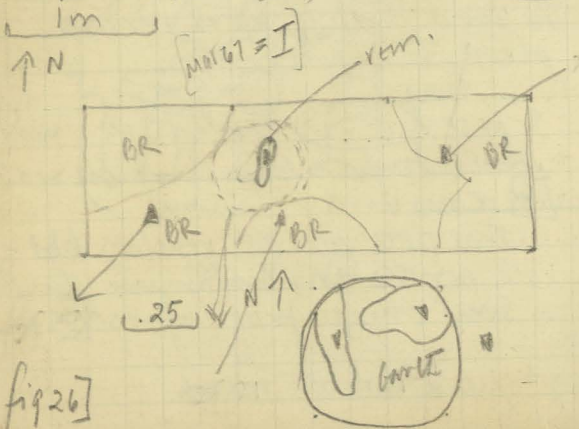


fig 26

1.20 from W, 1.40 from E, 0.60 from S; see p. 84; 2 stones removed, not upright; a possible door post hole with supporting stones.

Earth very deep beneath three stones - pit ca 0.40 m diameter extends into bedrock - stones, probably in place, in situ - not started all the way down.

(KL-24): Rm II, N. half, cut 1

▲ N: 28.94 - stones → S. earth + small stones ▲ 28.61 81?

see p. 88

Clearing of wall 18, S. side. Small stones removed: part 1. other stones below. few shards: part 2. more stones rem. part 3. area nearly level after this pass.

Stones remain, especially in NE corner - left from pass before.

E: 28.89, center 28.80, W: 28.75  
KL-6.30 9 obs.

(KL-25): Room II, W portion ▲ 28.75-

from wall 17 → 1.85 E., see p. 82  
room divided at corner of newly appearing E-W brick structure along S. edge of wall 17

Earth cleared around stones -  
pass 1: 28.67 - 28.64

see p. 89

## Photographs:

June 28, 1966

11:30

1) Trench E - House from SE

2) Trench E - House from E

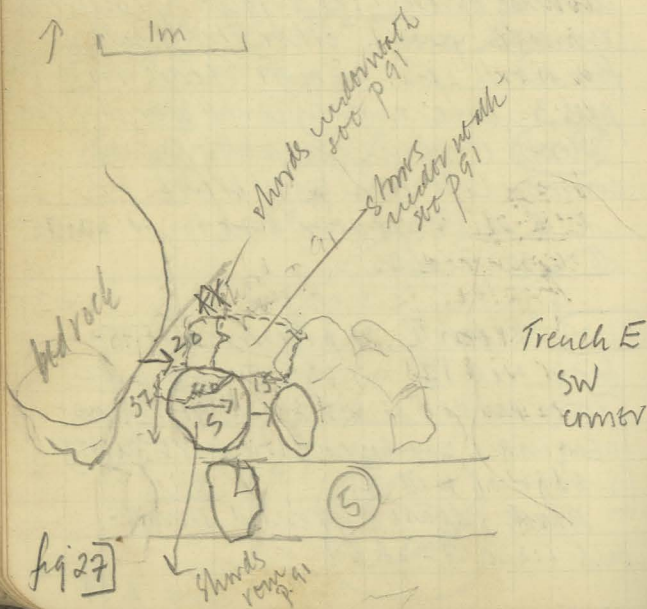
3) Trench E - Amicircular structure by wall [5] from above

4) Trench E: House - N half fr. W. pot in foreground NE corner behind.

5) Trench E - NE corner of room from SW



1m



Small irregular stones removed with earth E of floor stone.

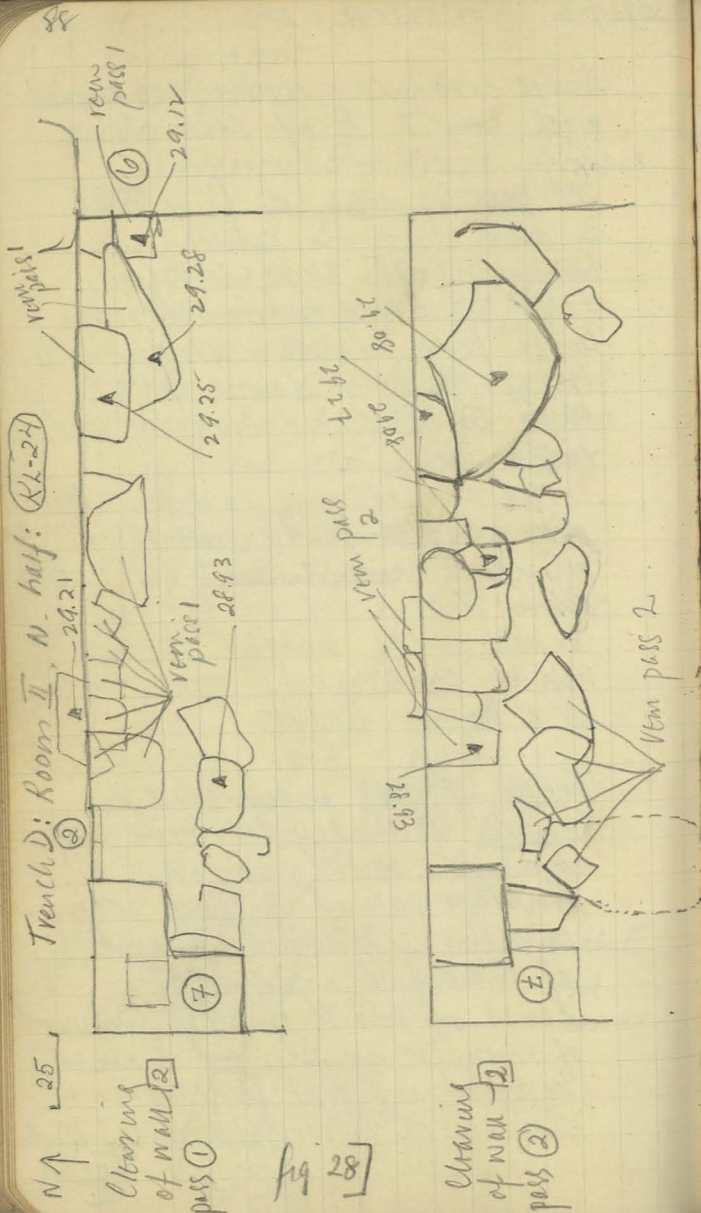
2:00

2<sup>nd</sup> pass of this lot finished.

Underneath large round stone at SW corner of room - large frag of pot with handle. More frags at same level east to N near outcrop of bedrock.

The level reached in this pass is  $26.57-55-47$ ; Height of round stone  $26.54$ . This is half is .08 lower than level of bedrock & earth in N half of room. Inside some of the earth is at a height of 145.

Frags of pots uncovered in KK-12 yesterday removed and combined with this lot. Another pass of this lot begins to clear to bedrock in part of N half of room. Level of earth in NE portion of room is now lower than bedrock in NW portion. - This earth is very hard & filled



2/vii/66 TRENCH D - D EXT

89

(KL-25) cmv.

Kph. 6.12 KL-6.31 obsidian blade 130 S. of wall [2], .30 from E edge of cut



pass 2: striations removed, see p. 82, in S. of center.

KL-6.32 22 obsidian.

Continuation of bench wall towards E. from wall [7] and wall [7] cleared. Lowest course of striations of bench wall A

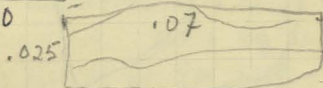
(KL-26) Room II, E. portion, from wall [6]

→ 1.05 to W. A 2879 - see p. 82  
pass 1: cavity removed from around striations, cavity with 2876, bedrock in NE A 2881.

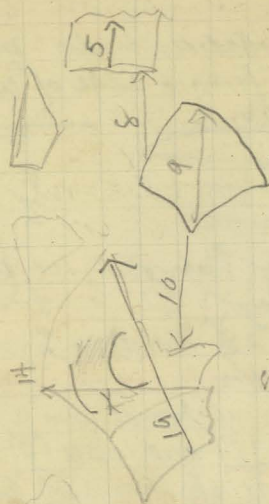
pass 2: striations removed in S, bench wall cleared + cleared A

KL-6.33 obl. blade A 2871

Kph. 6.10



KL-6.34 34 obs. chips  
Cavity left in both halves of room II, but bench wall cleared + drawn.  
cmv. p. 95



Trench E  
SW

shards rem. - p 91

fig 29

KL-6.17



CELT

green  
stone

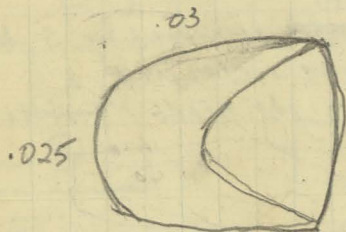


fig 30

chips of rock. A few small  
shards appear.

Irregular stone to E of pro-  
jecting bedrock removed. .80 N  
of wall 5. see p. 70

Beneath this stone more frags.  
of pot + more in corner. Total  
area covered by frags: 40 E-W,  
55 N-S in this corner.

These go with (KL-13) KL-6.15

70 obsidian chips so far.

A Handle 26.51 earth on which  
it rests A 26.43

JUNE 29, 1966.

(KL-13) continued - some circular  
structure by wall 5 removed.

Pot begun from W-E.

Stones underneath + large pot frags.  
in SW corner. see p. 58. + 90

Many shards in SW half of room.

KL-6.17 Kph6.7

Small green celt found ca. 10 cm  
above bedrock - by N edge of wall 5

A 26.48

cont p. 93



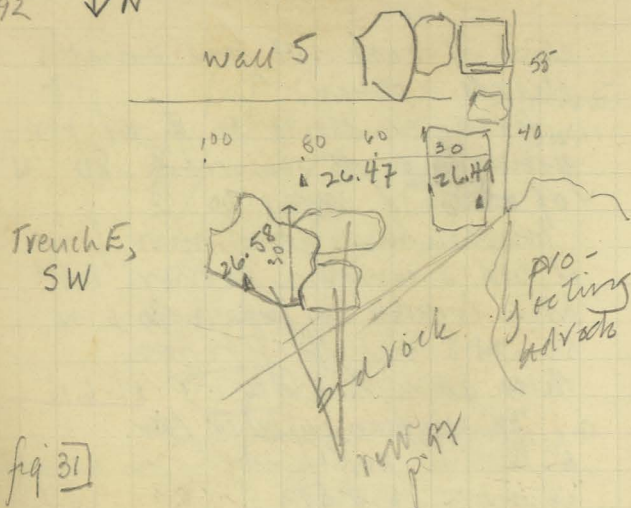


fig 31

▲ Depth of bedrock in SE: 26.47  
 earth: 26.54  
 about center  
 & under semi-circular struts:

↓ N

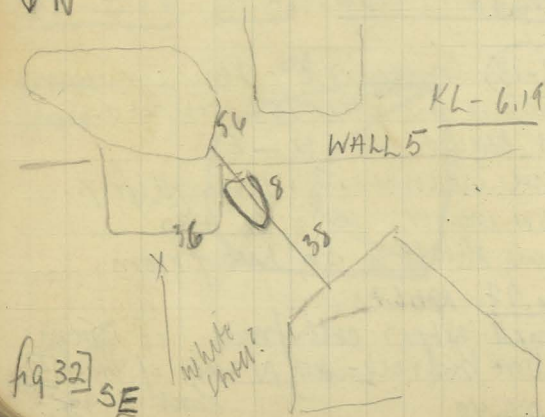


fig 32 SE

c. 3.20 E of W edge of Trench E.

see p. 46

(KL-14) clearing + removal of struts in NE structure continues. see p. 62

maximum depth of built structure in NW: 26.77  
 minimum in E: 26.97

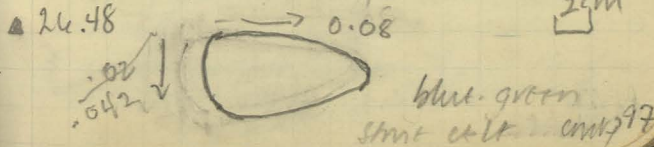
New plan revisited - no longer semi-circular see p. 62.

(KL-15) NE corner cleared down - flat stone in corner removed. see p. 62 earth underneath.  
 Depth after first pass: 26.84  
 Always no sherds.  
 After 2nd pass: 26.80 KL-6.35  
 After 3rd pass: 26.75 25 obs.

(KL-13) S half of trench - pass continues from center of house towards E.

KL-6.19 x ph 6.8

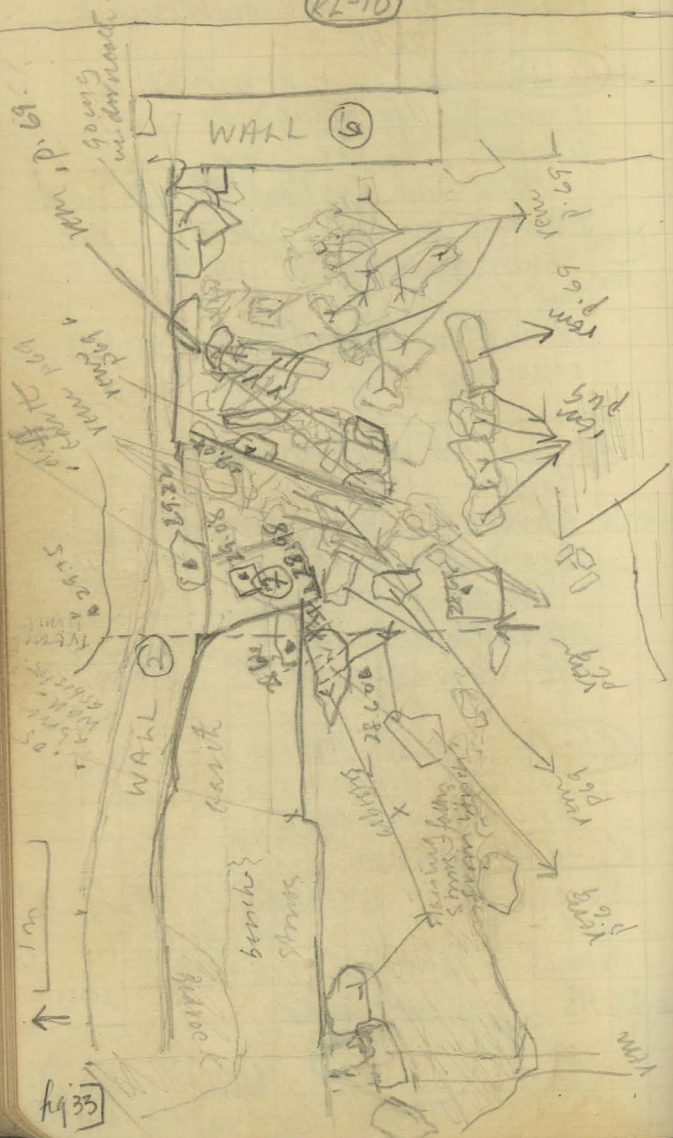
50 cm. E of small chlt - along wall - c. 270 from W edge of trench - another green chlt



94

## TRENCH D-D EXT.

KL-10



## TRENCH D-D EXT

Room II: entire

1m

95

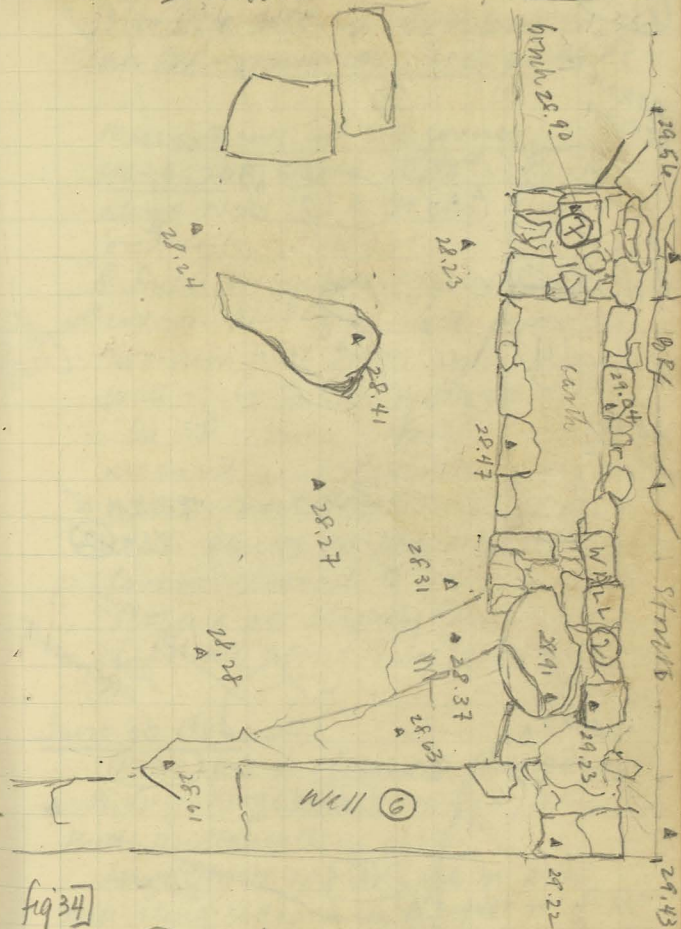


fig 34

KL(27) pits 1+2 removing stones.  
 on p. 82 this stone clearing  
 reveals carefully built bench wall  
 continuing between "bench structure"  
 & wall 7 - on same E-W line -  
 cont. p. 117.

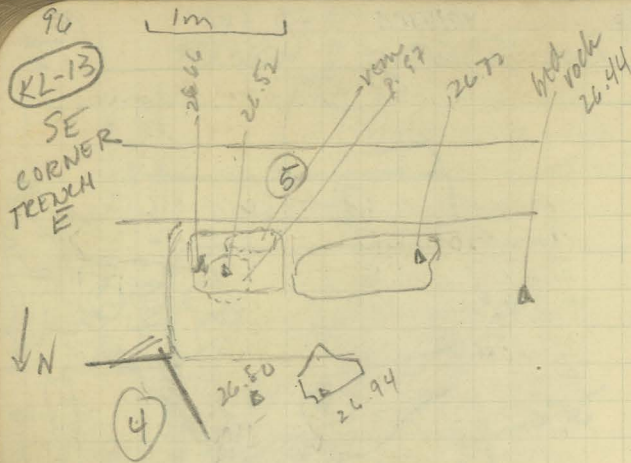


fig 35

1m NE corner, TRENCH E  
KL-12

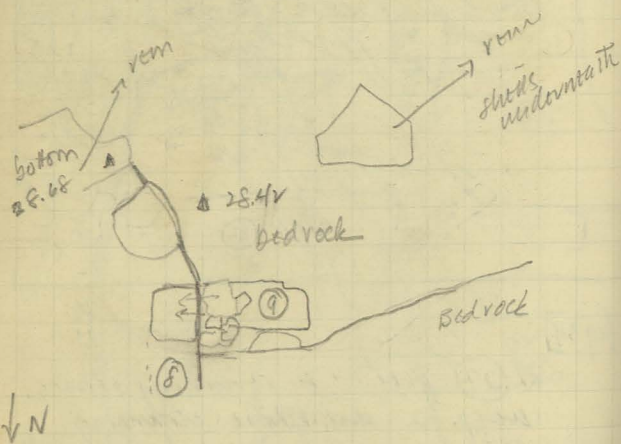


fig 36

20/vi/66

TRENCH E

97

3 stones left in previous pass  
in SW - removed. see p. 92

Many shards in SE corner.

KL-6.20A white shell? (KL-13)  
along wall 15 e. 90 cm. E of sec-  
ond cell.

8 small irregular pebbles in SE  
corner - kept with shards. squarish.

Two new large stones lying along  
wall - see p. 46. removed.

In SE corner - frags of pot  
in earth under E wall stone rem-  
oved. round flat stone under-  
neath almost on bedrock. removed.  
Corner cleared to bedrock -  
sloping up slightly to E - mostly  
flat all along S of room

June 20, 1966:

(KL-12) cut 4. cleared to bedrock: level  
28.42. large stone removed, see p. 96  
slabs underneath in earth.

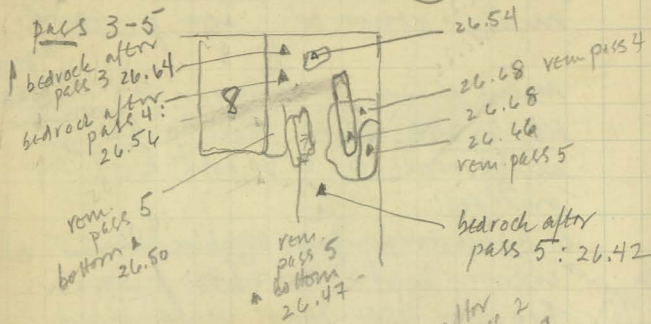
Large stones appear laid in E-W  
wall along bedrock in N. just W of NE  
structure. This wall 19 runs under 17  
towards E. Many shards found here.  
Wall 19 rests on bedrock. see p. 96

KL-6.14 12 obs. added.

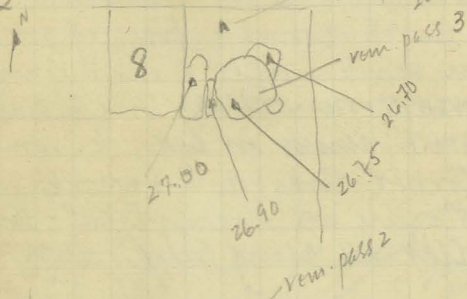
Wall cleared - one corner in W 3 in  
E to reach same level. see p. 99

N.E. Corner

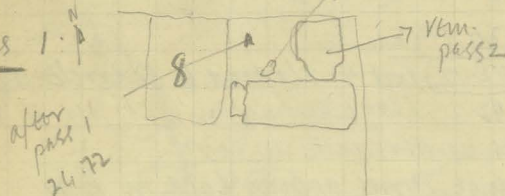
KL-21



pass 2:



pass 1:



for bedrock depths in  
hms E see p. 78.

fig 37

N.E. corner:

(KL-18) 26.75-26.42 (BR) see p. 74 for area  
irregular stone removed see p. 62, but for term-  
after pass 1: 26.72 (circular structure  
after pass 2: 26.67 pot frags. rem. 26.61.  
more appear underneath along  
wall [14] see p. 74

Photographs JLC

[18] probably [18] in later and over [9]  
which rests on bedrock.

after pass 3: 26.54 pots 26.54  
Round stone + earth removed beneath  
to reach same level. Irregular rock  
removed in frags. below.

pass 4 = c. .05 above bedrock - rock  
chips appear in earth and irregular  
pebbles - some of quartz. Bedrock reached.  
KL-6.26 22 obs. chips. 26.42

(KL-21) E of wall [18] see p. 98 26.77-26.42 (BR)  
Flat stone removed see p. 98

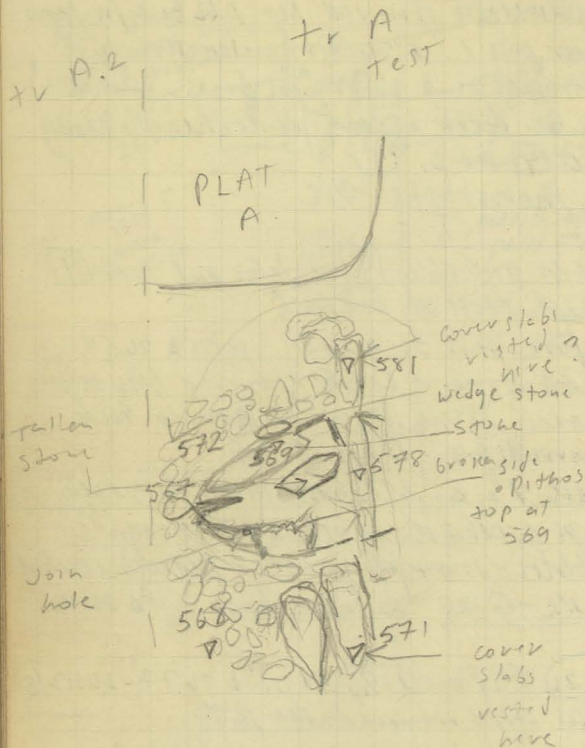
end of pass 1: 26.72, end of pass 2:  
26.67, end of pass 3: 26.64 end of pass  
4: 26.56 after pass 5: 26.49; (BR): 26.42  
Stones above each other, see p. 98; earth  
between - all rem. prob. not wall.

KL-6.27 obsidian

Walls [18] & [19] cleared; SW hanging stone  
on wall [18] rem. see p. 78 for section  
Bedrock has been smoothed to un-  
distinct level throughout room with NW ledge.

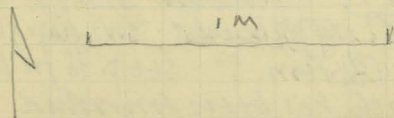
fragment of pumice - [disc]

June 30, 66



Grave XXXVIII

Levels shown except Pithos are those on which cover rested.



KEPHALA AREA F

UPPER Cemetery cont from  
X, 167 TR A TEST

KF-168 Grave XXXVIII cut 1

587 - 5.67 cont

Rem of cover

June 30, 1966

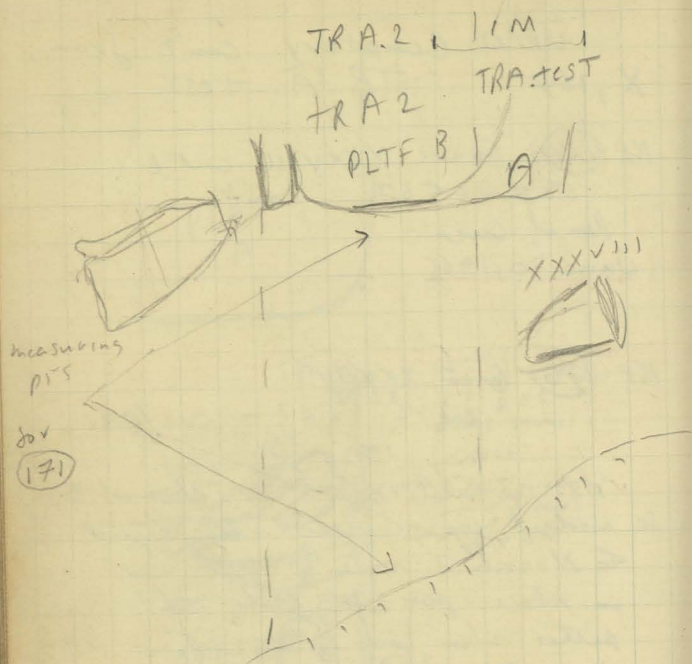
KF-170 Grave XXXVIII

cut 2 5.67 - 5.42/5.36

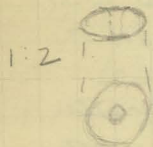
Stone at 569 rem. it seemed to be wedged by a smaller stone just to N. about centering was not in place. part of broke the pithos when cover was set over it.

Measured and photographed. The fragments raised me by one way. Had fallen in for above - for want be nearly complete. One fragment has join hole. near top inside is a fallen stone at C 5.53 beneath this is a fragment which joins with the top and has a hole to match. Pithos and fragments will be given number KF-6.31

Cont. p. 105

June 30, 66

KF-6.33



F. Upper Cemetery  
TRENCH A.2. cont from p. 161.

June 30, 1966

KF-(170) follows (169) in TR. A.2  
6.600/5.75 - 588/5.53

KF-6.33v Spindle whorl. Steatite?  
Kph 6.13

KF-6.34 obsid. from KF-(169)  
and KF-(171)

Earth and stones in sloping strata  
(N-S) no structures.

KF-(172) follows (171)  
588/5.53 - 5.80/5.43

KF-6.36 obsidian.

S. wall of platform A shall goes  
down. it seems to go much  
lower than wall at E. end.

July 2, 1966

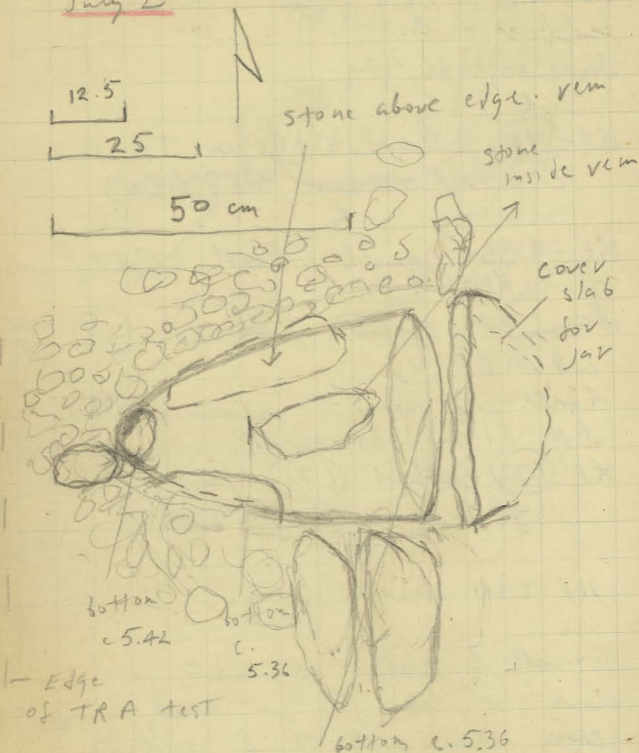
KF-(175) follows (172). We  
are now below the level of  
TRA.2.

580/5.43 - 570/5.37

KF-6.38 obsid. cont p. 109

June 30 '66

July 2



## GRAVE XXXVIII.

reconstruction of original position of jar before broken stones as after clearing except those noted.

KPH up TRA. can't find 101

few frags of bones - very thin frags  
of skull - child - given number  
KF 6.32

TRA 3 will be area from

from TRA 2 to W. edge of TRA

Partly in area of TRA West (See X, 132,  
we clean here in an attempt 136)  
to find the S end of well 1  
and the extent of this area to  
the S. of XXXVI. See p. 106  
for this purpose the 2 probable  
cover slabs to the S. of XXXVI  
(See p. 106 and X, 90f) will be removed.

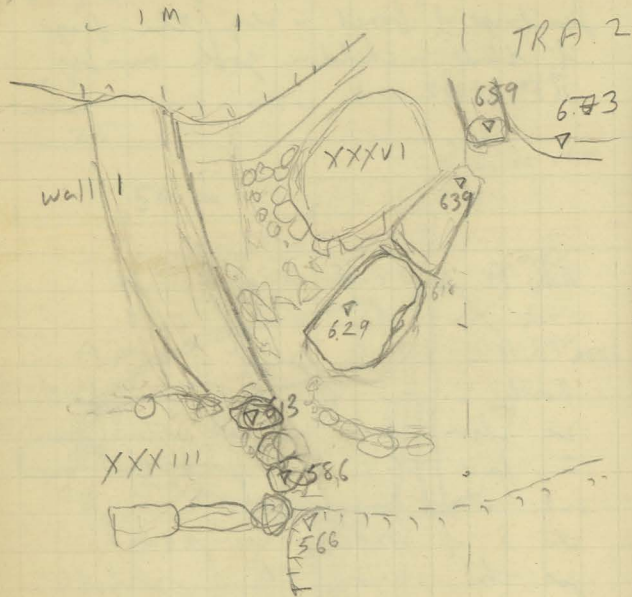
KF (173) will be lot for removal  
of these stones and pits in area  
indicated p. 106.

6. 639/570 (by bedrock at S edge  
of Area) - 6.06/5.60

2. VII. 66

S. well of XXXVII is distinguished  
we go down about 10 cm outside it  
it and many stones show up, both  
large and small in no particular  
Coit P. 107

July 2, 66 TRA. 3



KPH.F. up. TR A. 3 cont from 105  
 KF. 6.35 obid from KF-173

encampment.

KF-174 will remove stones in  
 an attempt to clarify situation.  
 KF. 6.37 obid.

Poss well appears S. of XXXVI  
 6.00/530 - 5.94/5.60

KF-176

clean, outside poss wall (i.e.  
 S. 5.80 -

KF-6.39 obid

wall still not clear.

KF-178 rem of stones S and  
 W. of Grave XXXVI. Enters  
 area of TRA West. S limit  
 in suspected wall. c. 620/5.80  
 Clean up to bowl left  
 before - See X. p. 129

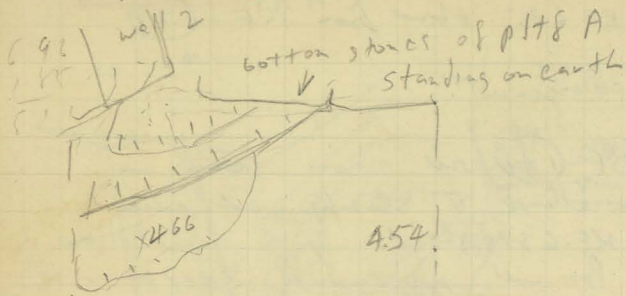
this is round - nearly 1/2 complete?  
 Coin No. KF-6.40 RTL

KF. 6.45 obid.

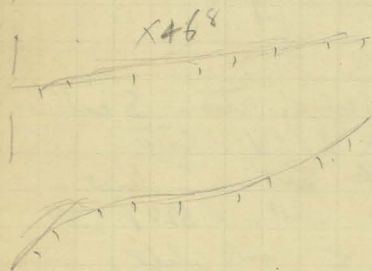
end 5.88/5.72 (W end S of XXXVI)  
 / 5.70 (by poss wall) cont p. 115



July 4, 1966



463

KF-6.47  
X

TR A.2

25 cm

JEC '67

TR A.2 cont from 103

KF-(177) will follow (175) in  
TR A.2 5.70/537 - 563/523

July 4, 1966

2 passes made bedrock  
appearing more and more to S  
in middle pit earth and  
shards. The N. part is  
now covered by a layer of  
smallish stones 5-10 cm  
whose surface sloped down S  
& at the same angle as  
our cuts here.

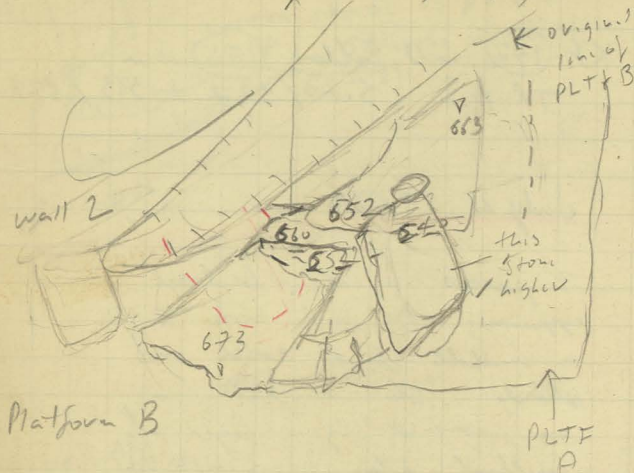
KF-6.46 Obv'd

KF-(180) follows (177)  
563/523 - 540/511

Remove small stones in N. part.  
Layer of sandy, soft soil beneath  
some larger stones. bedrock now  
exposed; into N. part of trench  
KF-6.58 Stone. Iron ore - or  
copper? ? beads w. scarp  
in S part of trench

Cont p. 113

Stone broken into pieces  
dotted lines show original size



KF-179 one frag. pumice discarded 1970

July 4, 1966

Platform B. Mem. is next undertaken.

KF-179 will be lot for removal.  
c. 680 - c. 634/1.22  
begin to E side where stones  
are higher of X, p. 144. here  
there are only 1 or 2 'courses' standing,  
above earth. To the S and SE  
end the Platform extends down  
about 4 courses.

KF-6.49 Obvial

There are one or 2 large flat  
stone beneath top layer fallen somewhat  
at crushed into pieces. Platform B  
still seems to be at a higher level  
with no connection with A though  
they come very close by big  
stone opp. resting at c.

A second slab resting beneath  
slab at 6.73 in red opp. appears  
to penetrate beneath a bit of  
bedrock. It breaks at line of  
bedrock - has removed. beneath  
this slab a line of stones  
in which they rest in disorganized  
form, walls of a (probable) grave

Cont. p. 115

July 4, 1966  
" 5, "

TR A.2 cont from 109

KF-~~182~~ will be next cut  
 here following ~~180~~

540/511 - c 5.00

Slope is in all other cuts  
 here from N. to S. at beginning,  
 but end we bring it about level.  
 Sheds continue, mostly of  
 large coarse rocks. A couple  
 of large bones - looks more  
 like settlement than cemetery  
 remains.

KF-~~183~~ next cut in TR A.2  
 5.00 - 4.70.

July 5, 1966

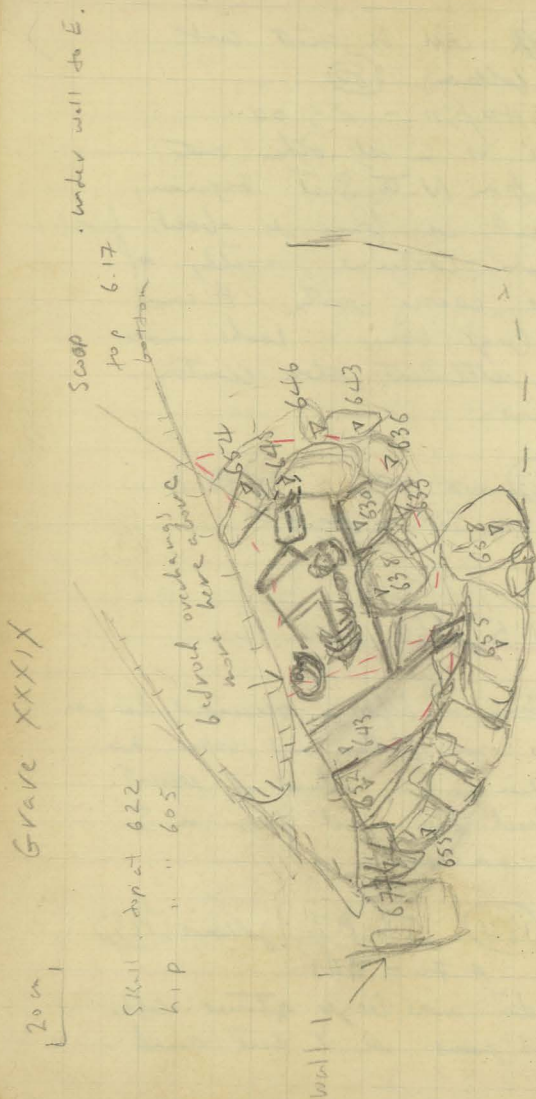
Continue as before. occasional larger  
 stones some pottery and bones. no  
 division in bin, noticed if present.  
 bedrock has good face on S  
 not on north.

KF-~~184~~ TR A2 follows ~~183~~  
 4.70 - 4.41

See also more larger stones. after  
 several paces we at last reach

Cont. p. 119

July 4, 1966, July 5, 1966



cont from 111  
running NW under the bedrock.  
to be Grave XXXIX  
KF-181 cut 1 in GRAVE  
XXXIX... c 6.34/6.22 - 6.10/6.00

Proceed down cut in under  
bedrock. Earth very hard - a  
few small stones. as we proceed  
we encounter more stones, some  
on end. They resemble bedrock  
here and probably split off  
from lip of bedrock above.

at c 622 encounter skull in  
NW part of grave, right  
hand bedrock. Clean down.  
at E end the higher top  
of the lip of a scoop.  
cont p. 121

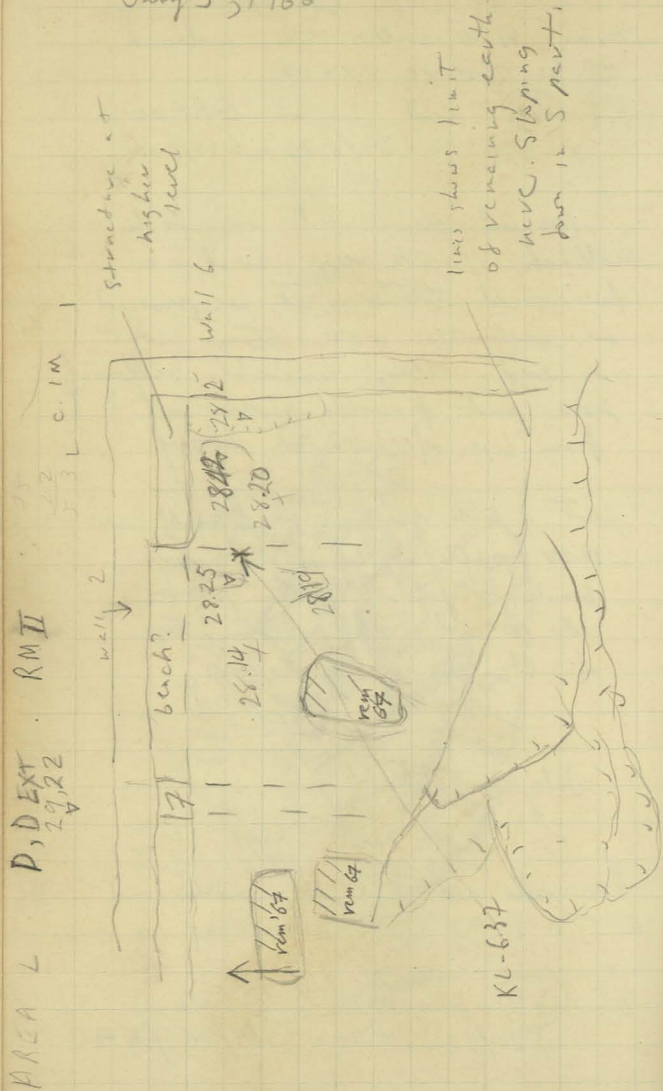
July 5, 1966

Panagiotis ret to taking another cut  
in TR A.3. cont from 107

KF-185 follows KF-178 here  
588/572/570 - 565/555/540

measurements W, S of XXXVI, S end of  
area by bedrock.  
cont p. 121

July 5, 1966



July 5, 1966

AREA L

TR D and D EXT.

RM II

KL-27 nest cut in RM II  
W. portion. follows KL-25  
stark at

bench (see opp) seen to proceed  
down. we started just below  
level of its top. a large  
flat stone in middle of area  
has its top at about the  
same level.

Remove c. 20 cub of earth  
to a level bedrock floor. Large  
flat stone left standing on earth,  
other stones in opp. rem.  
KL-636 obs'd

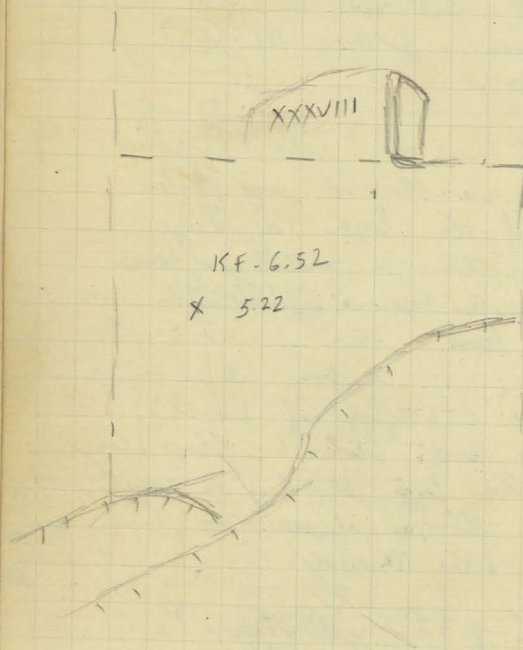
KL-637 yellow core?  
Not in opp.

Well 6 cleared.

Stones removed along bench?  
See p. 123.

KF-(154) Sherd with slag deposit (frag  
of Crucible) found among bones 1969

TK A 1st S.



Tr. A 2 cont from 113 July 5, 1961

bedrock here rather soft and  
sandy. Occasional sherd and bone  
continue right to the bottom but no  
obscure bedrock to S has a  
good face, very probably cut,  
also to N also probably cut  
levels as on sketch p. 108.

George to clean XXXVIII  
cont from X, 149. KF-(154) cont

bones rem. given number  
KF-6.50 lowest point 6.94

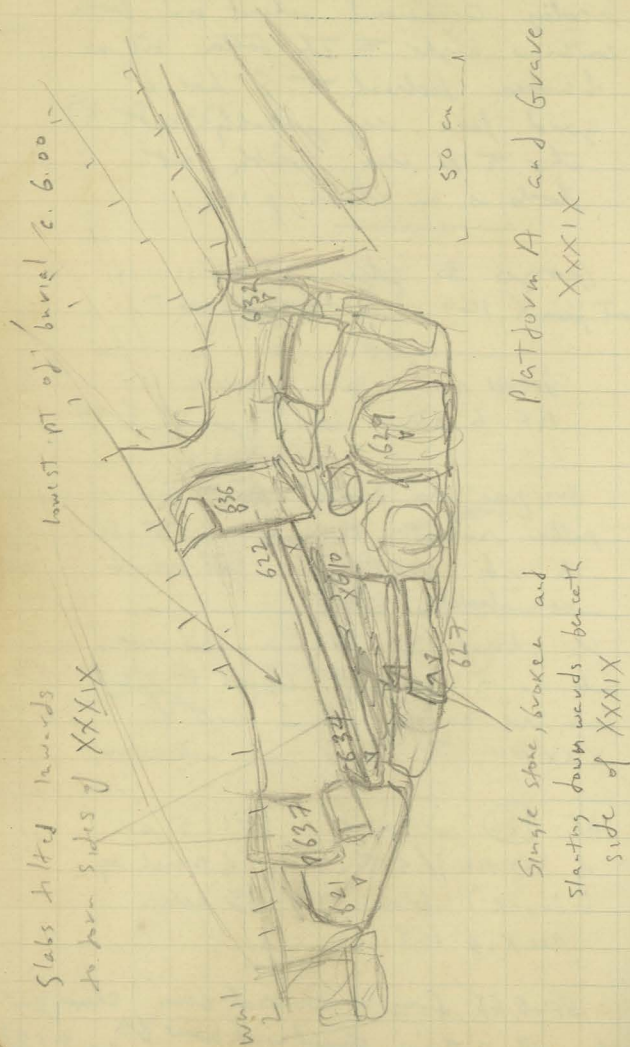
One part taken beneath forest and  
pulled around then appears to be  
the only skeleton here. Soft bedrock  
immediately beneath

We decide to take a few more  
cuts in S. part of Trench A first.  
Cuts will run from the S. side of  
XXXVIII to the S. S. side rem.

KF-(186) cut here. 571 (S. side  
of XXXVIII) / 555 (S. part of trench by  
bedrock) follows KF-(165) here.  
see X, p. 159.

KF-6.63 frag of worked bone. Sheep-gut  
rib with cuttings. Found with bones '69  
cont 7/27

July 6, 66



TR A.3  
KF-185 cont from 115

with 1<sup>st</sup> pass we end at a sandy layer. We keep track of same slope observable in W sweep of TR A.2 Well 1 still continuing down.

Another pass in sandy layer many frags of pottery.

Well 1 ends just above level reached at end

KF-6.47 Obsid.

Continue work in Grave XXXIX. See 115

more of Platform B taken down  
sketch with KF-79 see p. 111.

Bones taken out

Kph 22 Sweep run from XXXIX. Given  
number KF-6.51. KF-18

July 6  
Remove slabs on W end of XXXIX  
and take down the rest of platform  
B appearance as opp. This seems  
to be the level of the top of

cont p 125

KL cont from 117

between structure on E and 'wall' 7 on W in an attempt to clarify situation. Stones appear to be in no particular arrangement and none of them stand on earth. Clean down to surface of outer (S) row of stones. Seems to be a bench - on either side facing it wall 7 and 'structure' at higher level make good faces.

July 6, 1966

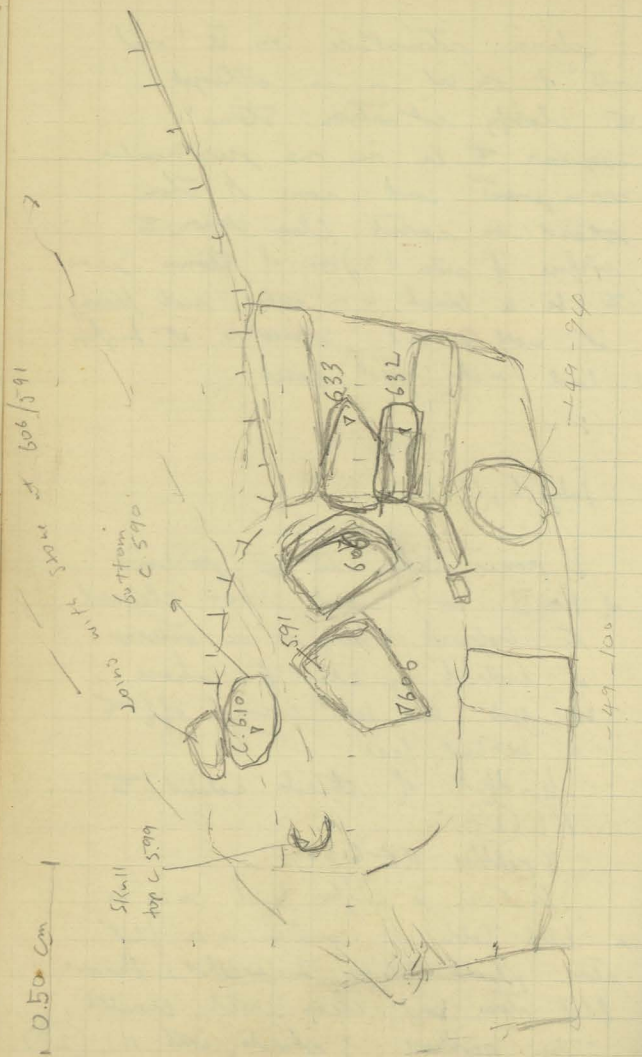
2 pieces taken in E. portion of Rm II and whole room cleared to bedrock. There is an outcrop of bedrock by wall 6 where W hole has been covered off to a vertical face.

handful of sherds added to KL (27).

3 pebbles. KF-6-38.

Structure at higher level may be a little table or counter - a flat stone placed between 2 walls. Remove flat stone and clear earth beneath, then replace. 3 sherds with KL (27)





## PLATFORM A, B cont from 121

Platform B. It appears likely  
 for broken slab tilted downwards  
 small slab forming S well of  
 XXXIX that this was a cover  
 slab for platform A. After its  
 cover collapsed Grave XXIX west  
 platform A above it would  
 have been built. Shards from  
 from Plat. B with (179)

KF-187 lot for rem. of stone  
 from top of Platform A.

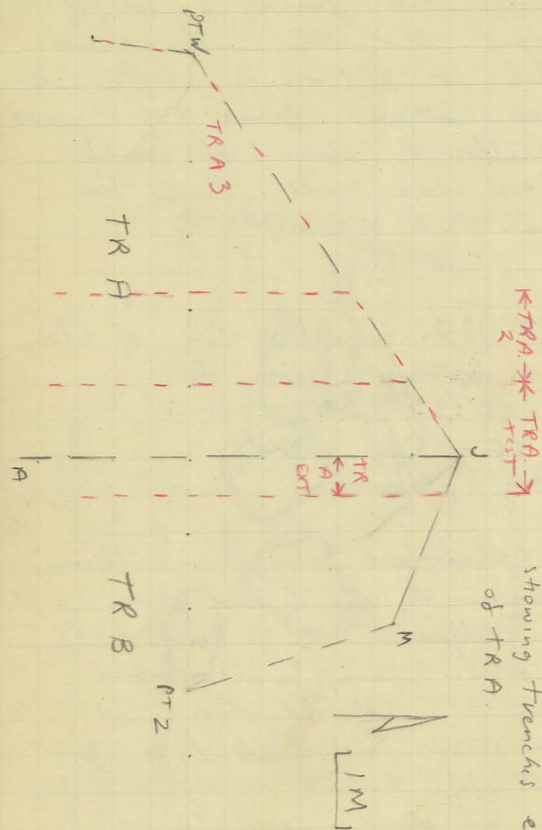
c. 6.37 - 6.06

KF-6.54 obsid

July 6, 1966

XXXIX side slabs rem. Cleaning  
 shows the tip of new grave  
 in Platform A. To be grave XXXX  
 continue cleaning, bench removed  
 XXXIX till intersection is at  
 on p. 124. Slab at 606/591 joins  
 with slabs at 627 and 610 on p. 120  
 this was clearly a cover slab over  
 XXXX which had slipped in, above  
 it was placed grave XXXIX. We  
 remove earth now under tip of  
 rock XXXIX went in further N  
 cont p. 129

July 6, 1966



Schematic plan of KP-6.54  
 showing trenches esp. sub-trenches  
 of TR A.

TR A test cont from 119

S part

KF-(186) cont

Kph6.17/KF-6.52 TC total point and

level in p. 118

and at 5.33/5.12

KF-6.53 obrid

KF-(188) follows in same area

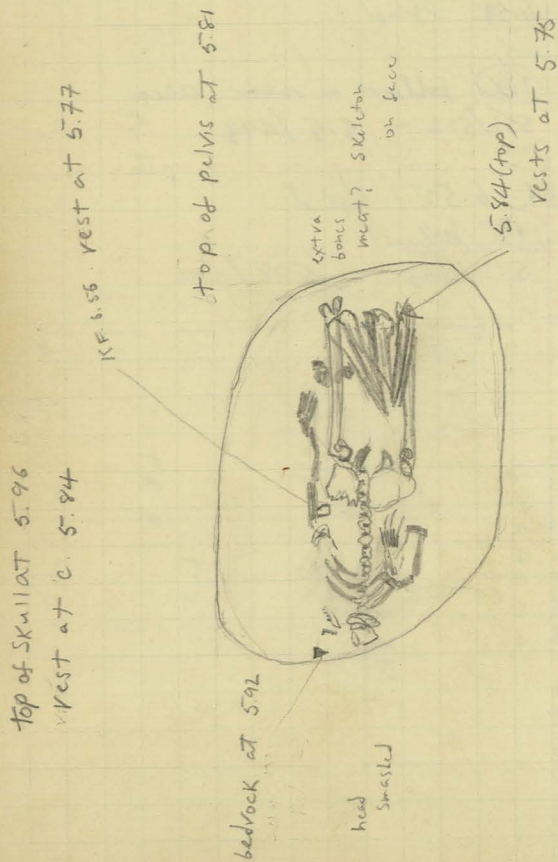
533/512 - 515/493

KF-6.55 obrid

KF-(190) follows:

515/493 - 508/486

July 6, 1966



Gravel XXXX cont from 125  
when on cleanings we encounter  
a few bones just above frag of  
lower slab of XXXX shown on  
p. 124

lots changed for run of  
slabs p124 and cleanings

KF-189 will be Gravel XXXX  
cleaning c 606 - 5.75

skeleton head to west. placed  
on bedrock skull crushed. bedrock  
beneath slopes down 5.92 (W) to 5.75 (E)  
Jasper tool by left hand

KF-6.56 Kph 6.18



August 14, 1966

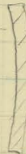
Remove skeleton. Box I from pelvis to  
head. Box II from pelvis to middle  
of thighs. Box III thighs down. Given  
field no. KF-6.57. Box IV bones  
from cleanings

Grave XXXVIII cover slab.

20 cm



Looking N



Looking W

August 21, 1967

Spend day drawing, cleaning, cementing.  
Rog, Thanasis (with mule), Panayotes and I.  
Start with Area G. Rog chews bedrock  
and we find levels with dumpy.

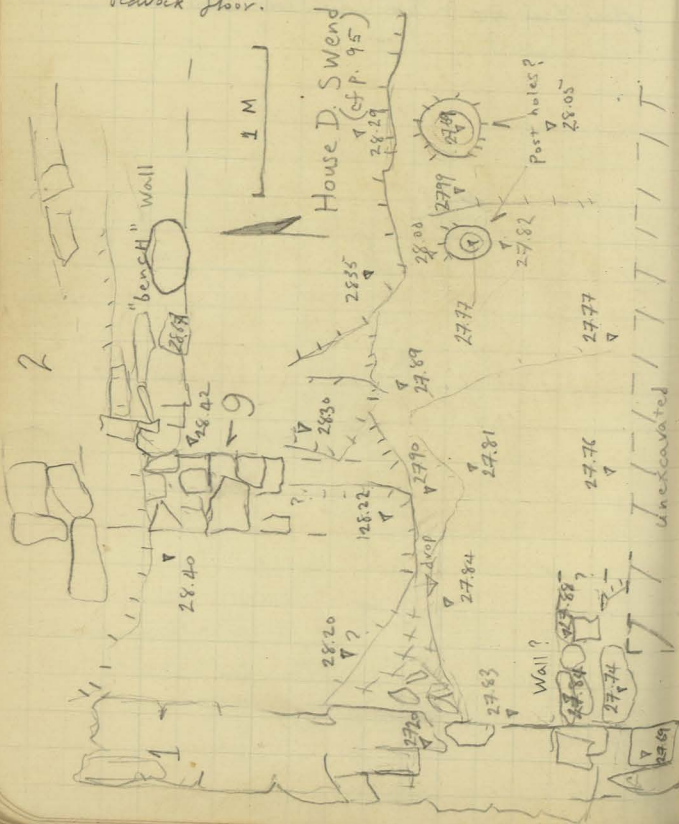
Panayotes set to cleaning Wall 1 to  
see if we can find face. A better face  
than previously drawn is cleared down  
by Rog.

Cover slab of XXXVIII has fallen out of  
place (see opp.) We will take this to AI.

August 22, 1967

## Soil Samples

- 1 Upper Cem. N bank of Trench A 2  
ca 4.80 to 5.00 (Last 2 cuts)
2. AREA L House D  
beneath westernmost of large stones left  
standing in Rm in 1966. Ca 10 cm above  
bedrock floor.

August 22, '67  
Area L House D

We remove 1966 dump off eastern side of House D. Also remove 3 large stones standing on earth within house (see p. 116, 95 etc). Shards to be added to KL-27 beneath the Southernmost we find many shards of the same pot - kept separate

KL-28. Clean stones from in front of SW end of bench wall. Remove one large thin slab of marble, broken into 3 pieces.

August 23, '67

Continue here to follow "bench" wall to S. It makes a corner at SW with a short new NS well (to be well 10) disc. frags of yellow ocher like that of KL-6.37.

About due N of Area K 10-15 M are remains of what seems to have been a building. among them we find a large piece of oboid which is sent in for INV. KPH 7-1

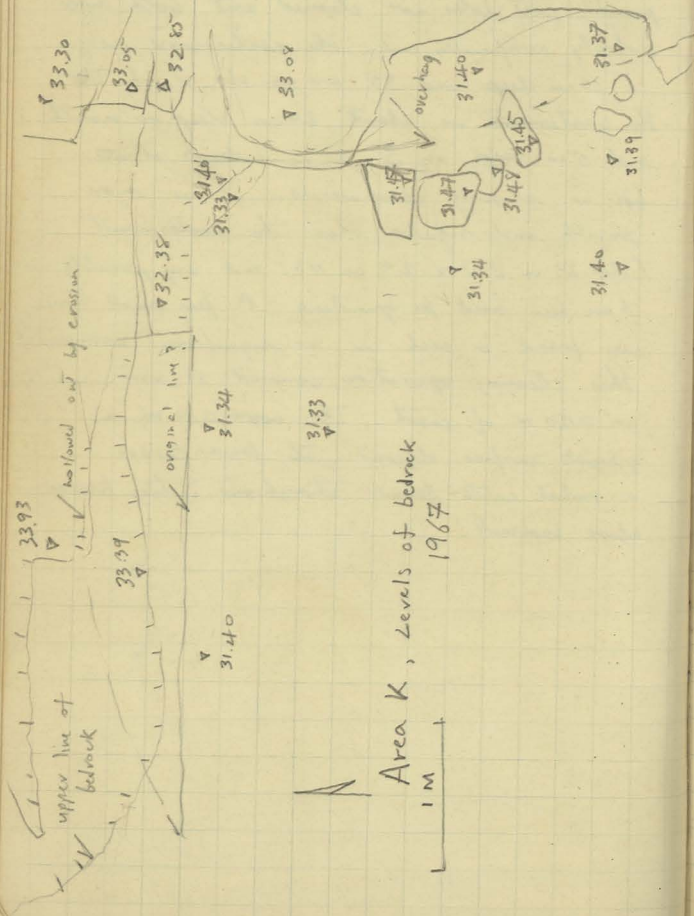
KL-29 Clean along SW side of House D next to Wall 1\*. Find a few stones that may make a wall perpendicular to 1. Unfortunately, \* Area of Trench B, 1964

can't over

August 23, 1967

L. House D cont from 133

most of the stones are small and seem to rest on earth. Cleaning further E brings up bedrock over the whole of W end of house (S limit of cleaning see p. 132) Two possible post holes are cleaned out. Both were probably artificially cut. The easternmost is ca 30 cm deep and 35-40 cm dia at the top. The westernmost is about 20 cm deep on north and 5 cm deep on S since bedrock at its lip is sloping downwards. It is more square and regular than the easternmost (dia 23 cm EW x 29 cm NS) and very possibly have been used for grinding. A few small stones were found in each in no significant arrangement. This cleaning operation removed at most ca 0.20 m of earth, the upper 0.10 m a greyish surface deposit, the lower 0.10 m a reddish earth found throughout the house above bedrock.



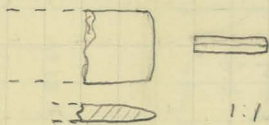
Sept 3, 1968

Aft. with Rog reading levels in Cemetery.

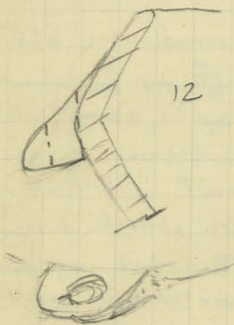
We determine conversion factor for pt y.

$$\begin{array}{r}
 4.65 \\
 + .05 \\
 \hline
 4.70 \text{ inst.} \\
 - 3.85 \\
 \hline
 0.85 \\
 + 1.17 \\
 \hline
 2.02 \text{ inst.} \\
 - 3.24 \\
 \hline
 - 1.22 \text{ sea level if pt y is 4.65}
 \end{array}$$

It is decided to round this off to + 1.20 m. Thus all figures for elevations should be increased by 1.20 m. We begin by converting figures on gen. plan of Cem. and Settlement (1968) As other figures are altered around will be made here to avoid any possible confusion between converted and unconverted figures.



Rim frag



1969

Aug 16 Visit to Kephala with  
M. Lambert and daughter. ca 10m.  
North of the NE corner of Area E  
in the vicinity of ancient wells  
we find a fragment from a small axe  
or chisel of copper. A few meters  
further NE we find another frag.  
of copper without recognizable form.

Also from surface near Area E  
frag. of bowl opposite.



Aug. 20, '69

Trip to Keph. with Roy and Niko.  
Niko cleans a little between XIII and VII in an attempt to determine the relationship.

### Notes on Lower Cemetery

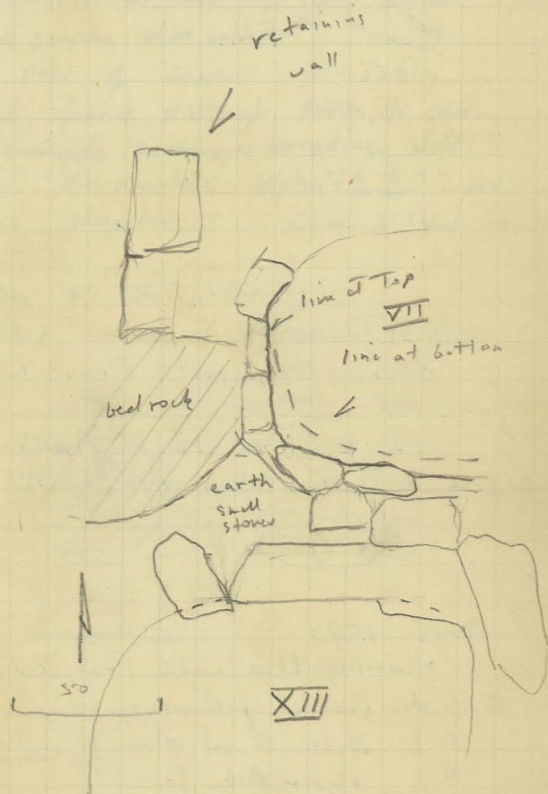
After removing S part of retaining wall built along the side of Graves VII and XXII we clean between VII and XIII. One stone rem. between possibly but not definitely part of XIII. Earth hard with small stones, occasional sherd and (animal) bone. We stop when it appears that there is little possibility of being sure of the relationship. It appears probable from their respective positions that XIII is later than VII but earlier than VI. (under assumption that they preferred to build alongside bedrock)

Probable sequence:

VII

XXII → XIII → XX → VI

however VII and XII might have been in use at the same time. So might XX and XIII



Aug 21, 69

Pick up one piece of copper, perhaps a fragment of chisel from hillside N. of Areas G and E.



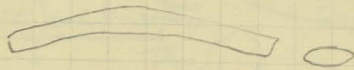
June 11, 1970

Pick up a thin piece of copper (frag of blade?) SE of E and ca 10 m due W of W12 in G

July 28, 71

Morning trip with Pini, Photogr. and MR.

10 m. E of E side of Area D  
Frag of Lead Clamp. Prob. ancient.



Aug 1, 1971

Morning trip with Prof. Kononophagos to Kph. Gather following samples

- #1 4 m E of Area D. later disc.
- #2 near Area D.
- #3 10 m NW of Area D
- #4 On baseline 25 m N. of Area D

K. takes samples to Athens for Analysis  
See p. 182

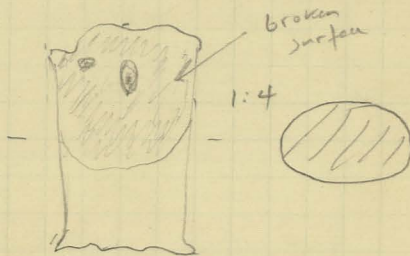
July 13, 1973

Trip to Kephala with group of metallurgists. See p. 185-186

10-20 pieces of slag collected near ancient remains just NW of cairn at top of hill. Other mineral samples also collected.

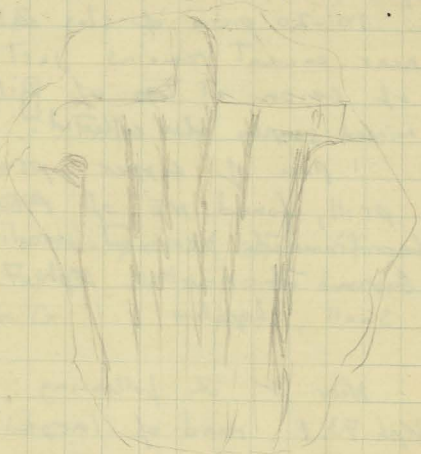
1 piece of copper, probably a prill, found NE of Area G not far from the prominent eroding cliffs. Given the number Kph. 73.2  
Small, shapeless

Near to the following:  
Kph. 73.1 Head of large TC fig.



Kephala - Surface 73.

clearly one of a pair of handles  
on one side of a jar like Kph. 11  
-but finer inv. Kph. 43.



For recently-found inventoried items  
from the surface at Kephala  
see the list in the gray field notebooks  
"Pottery" and "Misc. Objects".

The weather was very warm and  
 I had the pleasure of seeing  
 all the birds in the park  
 and "Miss O'Connell"

348

349



## Surface Obsid. Inv.

Kph 0.1  
 0.2  
 Low. } Kph 1.10  
 Cen } 1.11  
 1.12  
 1.13

## Obsidian. Re-analysis of that

treated in 1965 (under new system below p. 165)

Field No.	no. of pieces	Recognizable Types
KB-1.1	1	1a
KC-1.1	1	1 prob. a
KD-1.1	24	1b: 1, 3: 3, 4: 2, <sup>Kph 1.14</sup> one notched 6: the rest
KD-1.2	7	1b: 2 frags 4: 1 (cf Kph 6.46) 6: the rest
KD-1.4	4	4: 2, 6: the rest
KD-1.5	15	4: 4
KD-1.6	3	4: 1
KD-1.7	8	3: 2 <sup>Kph 1.15</sup>
KD-1.8	9	1b: 1 = <sup>Kph 1.16</sup> , 1: 1, 4: 1, 6: the rest
KD-1.9	6	4: 1, 6: the rest
KD-1.11	10	3: 1, 4: 1, 6: the rest
KD-1.12	1	5 <sup>unused afterward</sup> <sup>Kph 1.17</sup>
KD-1.13	9	4: 1
KD-1.14	4	4: 2
KD-1.15	8	2b: 1, 3: 1, 4: 1, 5: 1 (unused) <sup>Kph 1.18</sup> 6: the rest
KD-1.16	2	6: both
KD-1.17	3	1a: 1, 4: 2
KD-1.18	3	3: 1
KD-1.20	5	3: 1 large
KD-1.22	12	1a: 1, 2a: 1 prob 3: 2, 6: the rest <sup>Kph 1.19</sup>
KD-1.23	18	1: 1, 1a: 2, 4: 2, 6: the rest
KD-1.24	8	1b: 1, 3: 1 large, 6: the rest.
KD-1.25	11	6: all
KD-1.26	10	4: 2 slightly worked. 6: the rest
KD-1.27	2	1b: 2
KD-1.29	4	6: all

Field No. (= KEID?)	No. of pieces	Recognizable Types
KE-1.0	4	6: all
KE-1.1	12	1a:1, 3:2, 4:1, 6: the rest
KE-1.2	5	1a:1, 6: the rest
KE-1.3	9	1a:1 with <sup>Kph 1.22</sup> broken side. 6: the rest
KE-1.4	1	6
KE-1.6	15	3:1 large Kph 1.20
KE-1.8	2	6: both.
KF-1.2	6	3:2, 6: the rest
KF-1.3	2	6: both
KF-1.4	3	6: all
KF-1.5	2	6: both
KF-1.6	24	1a:3
KF-1.8	8	1a:1
KF-1.9	9	1a:1, 4:2, <sup>Kph 1.21</sup> 6: the rest
KF-1.11	8	3:1, 4:2, 6: the rest
KF-1.12	10	6: all
KF-1.13	2	3:1, 6: the other
KF-1.14	2	6: both
KF-1.16	5	1a:1, 1b:1, <sup>Kph 1.26</sup> 2a:2, 6: the rest.
KF-1.17	2	3:1 large <sup>Kph 1.23</sup> 6: the other
KF-1.18	1	1a
KF-1.19	1	1b Kph 1.24
KF-1.20	3	6: all
KF-1.21	2	6: both also Kph 1.9
KF-1.22	5	1a:1 <sup>Kph 1.25</sup> 1b:1
KF-3.1	1	2c ? = Kph 3.1
	2	5 1a:1
	3	12 3:3, 6: the rest

KF-3.5	6	3:1, 6: the rest
KF-3.6	1	2a Kph 3.2
KF-3.7	10	6: all
KF-3.8	14	1a:1, 1b:1, 4:1, 6: the rest
KF-3.10	5	4:1, 6: the rest
KF-3.17	5	3:1, 6: the rest
KF-3.18	18	1a:2, 3:1, 6: the rest
KF-3.23	5	3:1, 6: the rest
KF-3.24	3	3:1, 6: the rest
KF-3.25	15	2a:1, 3:1, 4:1, 6: the rest
KF-3.21	1	2a Kph 3.6
KF-3.26	20	1a:1, 2a:3, 3:1, 4:1 <sup>Kph 3.42</sup> (ovate) 6: the rest.
KF-3.27	19	6: all
KF-3.28	2	6: both
KF-3.29	4	2a:1, 6: the rest
KF-3.30	4	1a:1, 6: the rest
KF-3.31	3	6: all
KF-3.32	2	6: both
KF-3.33		1b Kph 3.5
KF-3.35	3	6: all
KF-3.36	1	6
KF-3.39	5	1b:1, 6: the rest
KF-3.40	3	6: all
KF-3.42	1	6
KF-3.43	11	1a:3, 3:1, 6: the rest.
KF-3.44	6	1a:1, 2a:1, 3:1, 4:1, 6: the rest <sup>Kph 3.43</sup>
KF-3.47	19	3:2, 4:4, 6: the rest
KF-3.48	7	1a:1, 6: the rest
KF-3.50	10	1a:1, 1b:1, 2a:1, 6: the rest



Field No.	No. of Pieces	Recognizable Types
KF-3.57	41	1a: 4, 2a: 2, 4: 2, 6: the rest
KF-3.53	83	1a: 1, 2a: 1, 4: 3
KF-3.54	4	4: 1 "ovate" Kph 3.44
KF-3.55	2	6: both
KF-3.56	5	6: all
KF-3.57	12	1b: 1, 3: 2, 6: the rest
KF-3.58	2	6: both
KF-3.59	1	Kph 3.14 (1a)
KF-3.60	7	1a: 3 incl Kph 3.18, 6: the rest
KF-3.61	17	3: 1, 4: 1, 6: the rest
KF-3.62	16	1a: 3, one tall Kph 3.37 2c: 1 Kph 3.38 6: the rest
KF-3.63	5	1b: 1 Kph 3.39 2a: 1, 6: the rest.
KF-3.64	13	1a: 2, 3: 1 Kph 3.40 6: the rest incl. Kph-3.19
KF-3.66	5	1a: 1, 6: the rest
KF-3.67	10	1a: 4 = Kph 3.20, 21, 22, 23 6: the rest
KF-3.70	11	2a: 2 Kph 3.41, 4: 1, 6: the rest
KF-3.71	14	3: 3, 6: the rest
KF-3.72	1	4: 1 "ovate" Kph-3.24
KF-3.68	several hundred	1a: some, 1b: some 2a: some incl. Kph-3.30 2c: Kph 3.31, 3: many incl. Kph 3.26, 27, 28, 29 4: many slightly worked pieces incl. Kph 3.25, one other frag of rounded point with flat flaking like Kph 1.2

KF-4.1	11	4: 1, 6: the rest
KF-4.3	9	1a: 1, 2a: 1 frag, steep Kph 4.43 6: the rest
KF-4.6	2	2b: 1 Kph 4.47
KF-4.9	12	1a: 2 incl. Kph 4.35 2b: 1 = Kph 4.34 2c: 1 very rough 6: the rest
KF-4.11	7	6: all
KF-4.12	15	1b: 1 = Kph 4.32, 3: 1 Kph 4.33 6: the rest incl. Kph 4.33
KF-4.14	4	6: all
KG-4.3	76	1a: 4, 3: 4, 4: 4 5: 4, 2 prob used w Kph 4.44 6: the rest.
KG-4.10	76	1a: 5, 3: 4, 4: 1 = Kph 4.28 6: the rest.
KG-4.15	83	3: 6 incl Kph 4.19, 5: 2 both prob. used
KG-4.16	44	2a: 1, 3: 3, 6: the rest
KG-4.17	117	1a: 1, 1b: 1 = Kph 4.15 3: 3 incl. Kph 4.16 4: 3, 5: 1 disintegrated piece Kph 4.45 6: the rest
KG-4.18	39	6: all
KG-4.19	90	1a: 8, 3: 5, 4: 1 6: the rest incl Kph 4.18
KG-4.22	1	1b: 1
KG-4.23	60	1a: 2, 1b: 4, 3: 5, 5: 1 prob. re-used Kph 4.46, 4: 1, 6: the rest

Field No.	No. of Pieces	Recognizable Types
KH-4.1	17	1a: 2; 3: 2, 4: 3; 6: the rest
KH-4.2	26	2a: 1 = Kph 4.17; 3: 4 4: 1; 6: the rest
KJ-4.1	7	3: 1; 6: the rest
KK-4.4	72	1a: 1, 2a: 1 prob = Kph 4.27 3: 14 incl. Kph 4.20, 21, 22, 23, 24, 4: 1, 6: the rest incl Kph 4.25, 26
KL-4.3	101	1a: 1, 1b: 2 3: 11 incl Kph 4.29, 30, 31, 4: 5 5: 2 frags. pass. used 6: the rest.
unstr. 60	ca 350	1a: Kph 0.2; 2b: Kph 0.1
" '61	ca 500	2b: Kph 1.13; 2c: Kph 1.12 5.2 Kph 1.11 Kph 1.10
unstr. 63	ca. 200	
	64	

## Paouira Obsid.

ca 300 pieces

Types similar to Kph. no

1st clear examples of pointed blades.  
photos otherwise there are

Row 1 parallel-sided blades 10+

Row 2 irregular blades 4+

Oval tool. (2nd photo) 1

Row 3 points 4

1. one flat, very irregular

2.  $\diamond$  to round in section,good retouch, prob. broken at  
base, originally pointed?3.  $\Delta$  in section, good  
retouch along one side and one  
edge, pointed at base4.  $\diamond$  in section, beautiful  
flaking on both sides. base broken  
but probably tanged below small  
projection on one side.

Used flakes Several.

Core frags. 10+

160

161

162

163

# Obsidian Analysis cont from X, 174

1966 -

## New System of Classification:

### 1. Blades:

- a. Parallel sided
- b. Irregular

### 2. Points:

- \* a. narrow, long, flat at base.
- b. broad
- c. other
  - i. Flat at base
  - ii. Pointed at base
  - iii. Notched

### 3. <sup>used</sup> Flakes (must show secondary working or use scars)

4. Misc. Tools (i.e. worked pieces which are irregular or broken and unrecognisable)

### 5. Cores: (intact or nearly intact; noted if secondary working)

### 6. Waste:

- a. blade-like
- b. flake
- c. Core preparation - rejuvenation
- d. other

\* without elaborate secondary working unless noted and flat on one side (= pointed blades)

NB: most of the pieces classified are fragments.

Field no	No. of Pieces	recognizable types (where no note of disc, none made)
KL-6.1	ca. 500	1a: 3; 1b: 5; 2a: 2; 2b: 3 3: 7; 4: 4; 5: 2 6: ca 475 - most disc. Tools kept
KL-6.3	26	1: 2; 3: 2; 4: 2 6: rest. most disc. Some translucent
KL-6.5	53	1b: 2; 2a: 3; 3: 7; 4: 3 6: rest most disc.
KL-6.7	185	1b: 2; 2: 2; <sup>one with good secondary working for inv.</sup> 2a: 7; 3: 9; 4: 9 (incl. 2 with notch) <sup>Kph 6.31</sup> <sup>Kph 6.30</sup> 6: the rest. most disc.
KL-6.10	33	4: 3 6: the rest most disc.
KL-6.12	100	1b: 2 (one very small) 2a: 1 3: 2; 4: 3; 6: the rest most disc.
KL-6.13	127	<sup>Kph 6.32, 33</sup> 1a: 4; 1b: 5; 3: 8 4: 3 (one with notch) 6: the rest. most disc. Two pieces with imbedded stone.
KL-6.14	54	2a: 3; 1b: 5; 2a: 1 <sup>Kph 6.34</sup> (oblong tip) 3: 2; 4: 1; 6: the rest many disc.

Field no	No. of Pieces	recognizable Types
KL-6.15	145	<sup>Kph 6.37</sup> 1a: 2; <sup>Kph 6.35</sup> 1b: 5; 2a: 3 2b: 2; <sup>2c: 1 (point)</sup> 4 = <sup>with 2 notches on side</sup> <sup>Kph 6.38</sup> 3: 4; 4: 1 (blade like but tall in section <sup>Kph 6.36 ("ovate")</sup> ) 6: the rest most disc.
KL-6.16	3	4: 1 6: the others.
KL-6.21	8	6: all
KL-6.22	23	1b: 1; 2a: 1 3: one with serrated edge; 4: 2; 6: the rest. most disc. <sup>Kph 6.39</sup>
KL-6.24	8	6: all.
KL-6.27	ca 10	4: 1. 6 the rest
KL-6.28	31	1a: 1; 3: 1, 4: 1 6: the rest
KL-6.29	16	1b: 1 6: the rest
KL-6.30	6	6 all
KL-6.32	18	2a: 1; 4: 1 6: the rest. Some disc.

168

Field No.	No. of pieces	Recognizable Types
KL-6.34	36	3: 1 (mir) 4: 2; 6: the rest kph 6.40
KL-6.35	25	1a: 1; 2a: 1; 6: the rest
KL-6.36	112	1a: 5; 1b: 1; 2a: 1 3: 5 <sup>kph 6.41, 42</sup> 4: 3; 5: 1 kph 6.43 6: the rest. Some discards.
L. Surface (KL-6.2 and KL-6.26 missing 1971)	ca 50	1a: 2; 1b: 1; 2b: 1 3: 2; 4: 1; 6: the rest. Most disc.
KF-6.1	2	4: 1; 6: the other
KF-6.2	30	3: 4; 6: the rest. Some disc.
KF-6.4	24	2b: 1; 3: 1; 4: 1; 6: the rest. Some disc.
KF-6.5	26	2b: 2; 3: 2; 4: 1 6: the rest. Some disc.
KF-6.6	51	1a: 3; 1b: 1; 3: 1; 4: 2 6: the rest. Some disc.
KF-6.8	43	1a: 3 kph 6.44 3: 2; 6: the rest. Some disc.
KF-6.10	6	6: all.

169

KF-6.11	16	1a: 3; 1b: 1; 4: 2 (one matched); 6: the rest.
KF-6.12	5	6: all
KF-6.13	31	1a: 2; 3: 3; 6: the rest.
KF-6.14	30	1a: 1; 1b: 2 kph 6.45 2a: 1; 3: 3 6: the rest
KF-6.17	18	3: 2 <sup>kph 6.4</sup> ; 4: 2 kph 6.47 "ovate" 6: the rest
KF-6.18	3	4: 1; 6: the other
KF-6.19	6	1a: 2; 4: 1; 6: the rest
KF-6.22	7	3: 3; 6: the rest
KF-6.23	21	3: 1; 4: 1 <sup>kph 6.46</sup> ; 6: the rest
KF-6.24	7	3: 2 <sup>kph 6.49, 48</sup> ; 6: the rest
KF-6.25	3	4: 1; 6: the others
KF-6.26	33	4: 2; 6: the rest
KF-6.27	9	1a: 2 <sup>kph 6.50</sup> ; 6: the rest
KF-6.29	23	1a: 1; 6: the rest

Field no.	No. of pieces	Recognizable Types
KF-6.34	39	1a:1, 4:3, 6: The rest.
KF-6.35	7	4:1, 6: The rest
KF-6.36	22	1a:1, 2c:1 (small) <sup>kph 6.52</sup> 1b <sup>kph 6.53</sup> , 3:1, 6 <sup>kph 6.51</sup> The rest
KF-6.37	3	6: all
KF-6.38	61	1a:1, 3:1 6: The rest
KF-6.39	1	6
KF-6.45	8	4:1, 5 <sup>kph 6.54</sup> on disc-like; 6: The rest
KF-6.46	18	1a:2, one tiny 1b <sup>kph 6.55</sup> ; 4:1; 6: The rest
KF-6.47	12	1a:1; 4:2 <sup>kph 6.56</sup> ; 6: The rest
KF-6.49	8	6: all
KF-6.53	8	1a:1; 6: The rest
KF-6.54	4	6: all
KF-6.55	1	6
Fup. Surf 1968	49	1a:2 1b:2, 4:4 6: The rest



Photographs:

1. Trench D fr. S
2. Trenches A, C + SE corner of Trench E fr. N
3. Trench E fr. SW
4. Trench E fr. SE

Shards etc photographed  
1971

KA 291

Prelim nos

22-23. PB. KF-22 KL-11 KF-21  
46, 48 Jars KE KD-2 KF-17

50, 52  
24-25. PB. KF-68 10 4 KE

Bowls  
PB inside KF-44 K6-11 KF-11 KF-19  
KF-59 103 13 13

54, 56  
26-27. PB. KF-114 21 157

Bowls KF-46 35 KE KF-23 KF-116  
PB outside KD-8 KF-117 KE KF-15 KF-166

58, 60

28-29. PB KF-18 KF-39 KF-13 K6-10  
Bowls, out. KF-74 KF-64 KF-53 KF-11  
" " both KF-11 KD-22 KF-61  
Jars →

62, 64

30-31. PB KF-22 KF-21 KF-48  
Bowls KF-48 KF-19 KF-13V or K6-10  
PB ins, de

66, 68

32-33. PB KF-21 KD-22 KF-8 KF-57  
Bowls KF-18 KF-17 KF-11 KF-12  
PB inside KF-18 KF-63 KF-61 KF-21 K6-3

- Color PB JLC
1. KE KE (2) KE (35) KE (23)  
KE (64) KE KL (11)
  2. KE (2) KE (9) KE (8)  
KE KG (11) KE (11) KE (59)  
(6 bands PB inside)

Color Stone obj. Neg. YAC

1. KPL 4.13, 1.2, 3.36, 6.18, 37, 6.16  
4.35, 6.29, 3.31, 1.25, 6.28
- (18) PB 2. KE KE (21) (46) (55)  
KE KE (64) (19) KE KL (11)  $\frac{1}{8}$  JII
- (19-21) PB  $\frac{1}{4}$  J II/16, 11, 16  
3-5 KE (21) KE (48) KE (19)  
KG (11) KE (11)  
KE (19) KE KE (59)

## KA.295

(were lot letters left  
off, it is KE)

- A. Baking Pans 1
- .17, 18 KE (156) (150) (10) KG (1)  
KE (59) (15) (186) KG (8)  
KE (26) KE (65) KE (182) (180) (188)
- B. Baking Pans 2
- .19, 20 KE KE (19) KE  
KE (103) KE (21)  
KG (1) KG (8) KG (1)
- C. Incis. body sherds
- .21, 22 { KE (186) KE (185) KE (190) KE (97) etc  
KE (129) (128) (180) (10) (103)  
KE (63) FTASurf. KE (174) (103) (57)

## KA297

C. AZ bands

- .45 KE (103) KE (13) KE KE (103) KE (23)  
KK (1) KE (10) KE (156) KE (149) KE (139)  
KE (12) KE (175) KPE, 5, KE (48)

D C I Jars

- .47 KE (158) KE (117) (117) KE (51) KE (42)  
KE (188) KE (117) KE (8) KE (175) KE (13)  
KE (156) KE (175) KE (122) KE (10)

E Misc Jar (mostly incised)

- .49 KE (107)<sup>107</sup> (103) (29) (148)  
KH (2) KE (128) KE (172) KE (129)  
KG (2) KE (126) KE (117)

F. Incised

- .51 KE (122) KE (48) KG (1) KE (23)  
KE (133) KE (21)  
KE (150) KE (61) KG (8)

G. Incised

- .53 KE (122) KG (1) KE (177) KE (94) KE (69)  
KE (177) KG (6) KE (139) KE (10) KE (123)

H. Incised rims

- .55 KE (108) (153) (40)  
KE (113) KE (123) KE (21) KE (177) KE (107)  
KE (57) ? KE (8) KL (3) KE (56)

176 KA.297

I incised flint.

.57 KF (64) KF (126) KF (136) KF (117) KF (117)  
 KF (116) KF (136) KF (156) KF (128) KF (159) KF (143)  
 KF (122) KF (140) KF (175) KF (58) KF (65) KF (50)  
 KG (8) KF (85) KG (5) KF (143) KF (21) KF (157)

Field Numbers -

177

1966: Area L

PA

- KL-6.1 obsidian: KL surface (KL-6) 17, 21, 33, 27,
- KL-6.2 obsidian: KL-C 2<sup>nd</sup> cut (KL-4) 9
- KL-6.3 obsidian: KL-C 3<sup>rd</sup> cut (KL-5) 11
- KL-6.4 ellipsoid chert stone <sup>pumice?</sup> (KL-6) 21  
RTL
- KL-6.5 obsidian KL-D 2<sup>nd</sup> cut (KL-8) 25
- KL-6.6 stone tool KL-D 2<sup>nd</sup> cut (KL-8) 25  
Kph 6.2
- KL-6.7 obsidian KL-E cut 2 (KL-7) 39
- KL-6.8 "white obsidian" chip (KL-8) 29  
Kph 6.3 chert/flint? KL-D, cut 2
- KL-6.9 incised stone - lens (KL-9) 37  
+ dots KL-D ext, cut 2
- KL-6.10 obsidian KL-D EXT, cut 2 (KL-9) 33  
RTL
- KL-6.11 pot - large shards (KL-8) 41  
RTL KL-D, cut 2
- KL-6.12 obsidian KL-E (KL-11) 43, 71  
stone removal
- KL-6.13 obsidian KL-D EXT (KL-10) 37  
stone removal 53, 65

KL-6.14 obsidian, KL-E, cut 4	(KL-12)	71 75 97
KL-6.15 obsidian, KL-E cut 5	(KL-13)	75 91
KL-6.16 obsidian, KL-E cut 6	(KL-14)	79
KL-6.17 celt KL-E, cut 5 Kph 6.7	(KL-13)	91
KL-6.18 obs. blade KL-D-DX, SR Kph 6.11	(KL-10)	69
KL-6.19 celt KL-E, cut 5 Kph 6.8	(KL-13)	93
KL-6.20A shell frags?	(KL-13)	97
KL-6.20B Jasper blade Kph 6.16	(KL-19)	81
KL-6.21 obsidian	(KL-16)	73
KL-6.22 obsidian	(KL-19)	81
KL-6.23 marble bowl frag? Kph 6.14	(KL-22)	77
KL-6.24 obsidian	(KL-20)	77
KL-6.25 obsidian blade Kph 6.15	(KL-22)	77
KL-6.26 obsidian	(KL-18)	99
KL-6.27 obsidian	(KL-21)	99
KL-6.28 obsidian	(KL-22)	77
KL-6.29B obsidian	(KL-23)	81
KL-6.30 obsidian	(KL-24)	85
KL-6.31 obsidian blade Kph 6.12	(KL-25)	89
KL-6.32 obsidian	(KL-25)	89
KL-6.33 obsidian blade Kph 6.10	(KL-26)	82, 89
KL-6.34 obsidian	(KL-26)	89
KL-6.35 obsidian	(KL-15)	93
KL-6.36 obs	(KL-27)	117
KL-6.37 yellow ore	"	"
KL-6.38 pebbles	(KL-27)	"

KL-6.29A chalk sample 77

AREA F 1966 FIELD NUMBERS  
 (see X p.180)

KF-6.31	buried jar XXXVIII	KF- <del>170</del> 101
KF-6.32	bones " "	" " 105
KF-6.33	Spindle Whorl or Bead Kph 6.13	KF- <del>171</del> 103
KF-6.34	obid	KF- <del>169</del> <del>171</del> "
KF-6.35	obid	KF- <del>173</del> 109
KF-6.36	obid	KF- <del>172</del> 103
KF-6.37	"	KF- <del>174</del> 107
KF-6.38	obid	KF- <del>175</del> 103
KF-6.39	obid	KF- <del>176</del> 107
KF-6.40	bowl RTL	KF- <del>178</del> 107
KF-6.41	shards with slag deposit	KF- <del>16</del> <del>163</del>
KF-6.42	frags of Cup	X, 154
KF-6.43	frags of Crucible	KF- <del>159</del> X, 152
KF-6.44	" of Slag	" " " "
KF-6.45	obid	" " " "
KF-6.46	obid	KF- <del>178</del> 107
KF-6.47	obid	KF- <del>177</del> 109
KF-6.48	obid	KF- <del>185</del> 121
KF-6.49	obid	KF- <del>179</del> 111
KF-6.50	bones	KF- <del>184</del> 119
KF-6.51	Scoop. Bowl XXXIX	KF- <del>181</del> 121
KF-6.52	TC 1001 Kph 6.17	KF- <del>186</del> 127
KF-6.53	obid	" " " "
KF-6.54	obid	KF- <del>187</del> 125
KF-6.55	"	KF- <del>188</del> 127
KF-6.56	Jasper Sponges Kph 6.18	KF- <del>189</del> 129
KF-6.57	Skeleton from XXXX	" " " "
KF-6.58	ore sample	KF- <del>180</del> 109

KF-6.59	Frag of bone tool	KF- <del>144</del> X, 127
60	" " " "	<del>148</del> " 139
61	frag of worked bone	<del>157</del> X, 150
62	" " " "	<del>169</del> X, 160
63	" " " "	<del>186</del> XXVI,

(Brass)  
 KF-4 8  
 KG 4 4

Samples taken by C.R. ('67?)

- \* 1. Frag. of Crucible broken from remaining piece in KF-6.41 (= Kph. 37)
2. Frag. of slag. (KF-6.44?)
- φ 3. Frag. of ore (KF-6.58)
- + 4. Frag. of slag. from # 80 opp.
5. Frag. from emery axe (Kph 4-36)

\* = Charles #6  
 φ = " #7  
 + = " #5

Samples taken by K. Konophasos. Aug 1, 1971  
 From Kephala

1. # 2 p. 142 slag? (part kept in Kca)
2. # 3 p. 142 "
3. # 4 " " "
4. Kph 37 Crucible fragment
5. Kph 24 " "
6. Kph. 3.15 Frag. of tool.

### KPH ANALYSES

Cincinnati winter '66

No.

- 22 KG-4.9 ore? slag. Surface
- 23 KG-4.14 white clay
- 80 KD-~~(18)~~ XI, 28 fine grained slag  
 surface
- 81 KF-3.69 (KF-~~(29)~~) unstratified
- 82 KE-~~(4)~~ ore. heated on 30%  
 surface
- 83 KD-~~(24)~~ XI, 31 compacted gravel
- 84 KK-4.3  
 hearth. clay or plaster

//

## Technical Notes

Tylecote July 73

Smelting prob. not in crucibles

f. Timna #39. B. Rothenberg (book)  
Abu MataJ. Perrot. Crucible sherds,  
furnace lining

J. Israel B.J. mid 50's

look for Journal of the  
Historical Metallurgical  
Society. (Now called Bulletin  
of H M Group)J. Caldwell, Excavations at  
Tal-Iblis, Illinois  
(Crucible smelting unlikely - experiment)Kythnos slag heaps. Greco-Roman  
is yet unpublishedPrills from slag in crucibles?  
slag broken upCopper ores known now from  
Laurion.Slag heaps definitely known  
on Paros

Tuyere = Twir

Encomi.

TS report on furnace  
 "Observations on Cypriot Copper  
 Smelting" RDAC, 1971, 53-54  
 also TS book and new book  
 in press.

- 1966: AREA L pg. 9
- KL-4 Trench C - 2<sup>nd</sup> cut below surface  
 2 profile shovels, handful disc
- KL-5 Trench C - 3<sup>rd</sup> cut  
 2 profile shovels, handful disc
- KL-6 Area K - Surface cut 19
- KL-7 Trench E - cut 2 19
- KL-8 Trench D - cut 2 25
- KL-9 Trench D cut - cut 2 33  
 handful of shovels combined with KL-8
- KL-10 Trench D Ext. - stone removal 37
- KL-11 Trench E - stone removal 43
- KL-12 Trench E - cut 4 71  
 N half of room
- KL-13 Trench E - cut 5 75  
 South half of room
- KL-14 Trench E - NE corner 79  
 stone removal + cut 6
- KL-15 Trench E - NE corner 93  
 cut 7
- KL-16 K2-D, "Excavation 1", N. of Rm I 73
- KL-17 K2-D, "Excavation 2", N. of wall 12, 73  
 N. of Rm II



- ✓ (KL-18) KL-E, NE corner 99
- ✓ (KL-19) KL-D, Rm I, S. half, 77
- ✓ (KL-20) KL-D, Excav. cut 2 77
- ✓ (KL-21) KL-E, E. of wall 8 99
- ✓ (KL-22) KL-D, Rm I, N. half cut 1 77  
shell kept - combined with KL-23
- ✓ (KL-23) KL-D, Rm I, N. half, cut 2 81
- ✓ (KL-24) KL-D, Rm II, N. half cut 1 85  
combined with KL-18
- ✓ (KL-25) KL-D, Rm II, W portion 85  
Combined with KL-26 27
- ✓ (KL-26) KL-D, Rm II, E portion 89  
Combined with KL-25 27
- KL-27 KL D RM II whole 117
- (28) " " cleaning bench wall 133
- (29) Along wall I 132

- KF 165 1966
- KF-69 ✓ TR. A.2 X, 167
- KF-170 ✓ Grave XXXVIII 101  
cut 2
- KF-171 ✓ TR. A.2 103
- KF-172 ✓ TR. A.2 103
- KF-173 ✓ TR A 3 105
- KF-174 ✓ TR A 3 107
- KF-175 ✓ TR A.2 103
- KF-176 ✓ TR A 3 107
- KF-177 ✓ TR A.2 109  
570/537 - 563/523
- KF-178 ✓ S and W of XXXVI 107  
- 588/572
- KF-179 ✓ Plat form B. Vca of 111  
stones 6.50 -
- KF-180 ✓ TR. A.2 109  
563/523 - 540/511
- KF-181 ✓ GRAVE XXXIX 115
- KF-182 ✓ TR A.2 113  
cut 1  
540/511 - 5.00

- KF-(183) ✓ TR A. 2 113  
5.00-4.70
- (184) ✓ TR A. 2 113  
4.70-4.41
- (185) TR A. 3 115  
~~5.88/5.72~~ 5.70-5.65/5.55/5.40
- (186) ✓ TR A. test 119  
S. side. 5.71/5.55-5.33/5.12
- (187) ✓ Platform A. um of stones 125  
6.37-6.06
- (188) TR A. test 127  
S. side 5.33/5.12-5.15/4.93
- (189) Gravel XXXX cleaning 129  
6.06-5.75
- (190) TR A. test. S. 127  
5.75/4.93-5.08/4.86

## Photographs 1966

Band B.

- 1KA 118 cont from X, 188  
 32A from XXXVIII after rem of  
 cover from S.  
 43A "  
 54A " from W. after rem of stone  
 65AKF up. well 1 from S  
 7-10 6A-8A Grave XXXIX from S.  
 10 9A Grave XXXVI and well 1 from E  
 11 10A TR A.2, Platforms A and B " S  
 12 11A Graves XXXVI, XXXIX " "  
 13 12A, 13A TR A.2 from N  
 15 14AKF up. GRAVE XXXIX and platf. A SE  
 16 15A " " " " " E  
 17-19 see opp.  
 20 19A Gen Kephala L  
 21 20A " " Monumentary and Cem.  
 22 21A " Bay  
 23 22A " Cem.  
 24 23A Gen XXXY E  
 25 24A " " SE  
 26 25A " " N  
 27-31 Kph L. house D 26A-29A  
 31 30A Gen to E  
 32, 33 Gen XXXX W 31A-32A  
 34 " " E 33A

KA 118 cont XXXI, 196

KA. 118

- see also XXXI, 196  
 16A 17 M RM 2 from E  
 17A 18 M RM 2 and 3 from SE  
 18A 19 M " " Wend. s/ab with  
 plaster.

Ka 189

Aug 21, '67

- 1 } Area M  
 2 } See XLI, 193  
 3 }  
 4 }  
 5 G. Wall 1 SW  
 6 " " NNE  
 7 " " 2 S  
 8 " " " SE  
 9 " " " S  
 10 G tr. beside Wall 2 S  
 11A E gen S  
 12A " " SW  
 13A " " "  
 14 D 'plateia' E  
 15 " Wall A etc. S  
 16 " " D and niche S  
 17 " " " " " W  
 18 D gen of central part. W  
 19A D "RM 11" W  
 20 D wall E SE  
 21 D gen. of upper part SE  
 22 Gen at neck fr. Headland  
 con't over

## Obsid analyses (Sturud, 67)

- 25 piece from KF-3.53  
 10 " " KF-6.34

## KA 189 cont

- 23 Bay and view to Chora fr. Headland. N  
 24 G. wall 1 SW  
 25 " " 2 etc. SE  
 26 E. gen. S  
 28 D. gen. E  
 29 D " SE  
 30 D SE part S  
 31 D W " SE  
 32 " Gen. E  
 33 " " N  
 34 " " NE. Bay etc.  
 35 " " NE  
 37 view to Chora fr. Headland  
 36 Bay and view to SW

## KA 190 August 23-24, '67

- 1  
 2A Kph. view of headland and beach. SW  
 5A Gen. WSW  
 6A View of Troulos etc. N  
 7A AI Gen. N

- 9A Kph. Beach etc. NW  
 10A " " N  
 11A L. House D. S  
 12A Kph. Gen. S  
 13A View towards Korassia N  
 14A "Gen " " "  
 15A Gen. S  
 16A " "  
 17A Isthmus etc. S  
 18A " " S  
 19A " " S  
 20A L, House D. NE corner. S  
 21A " " " " " SW  
 22A " " " Gen. N  
 23A " " " NE corner SW  
 24A-25 " " " " " "  
 26A " " " and Wall 1 "  
 27A " " " " "  
 28A " House " SW  
 29A " House E. Gen. W  
 30A " " " " SW  
 31A " " " Alcore. SW  
 32A " " " " "  
 33A " House D. Gen. SE  
 34A " " " " S  
 35A " " " " W  
 36A " K SW

B 33  
G 26

127  
173  
258

127  
173  

---

341

bed 104/111  
569/582

623

623  
173  

---

568

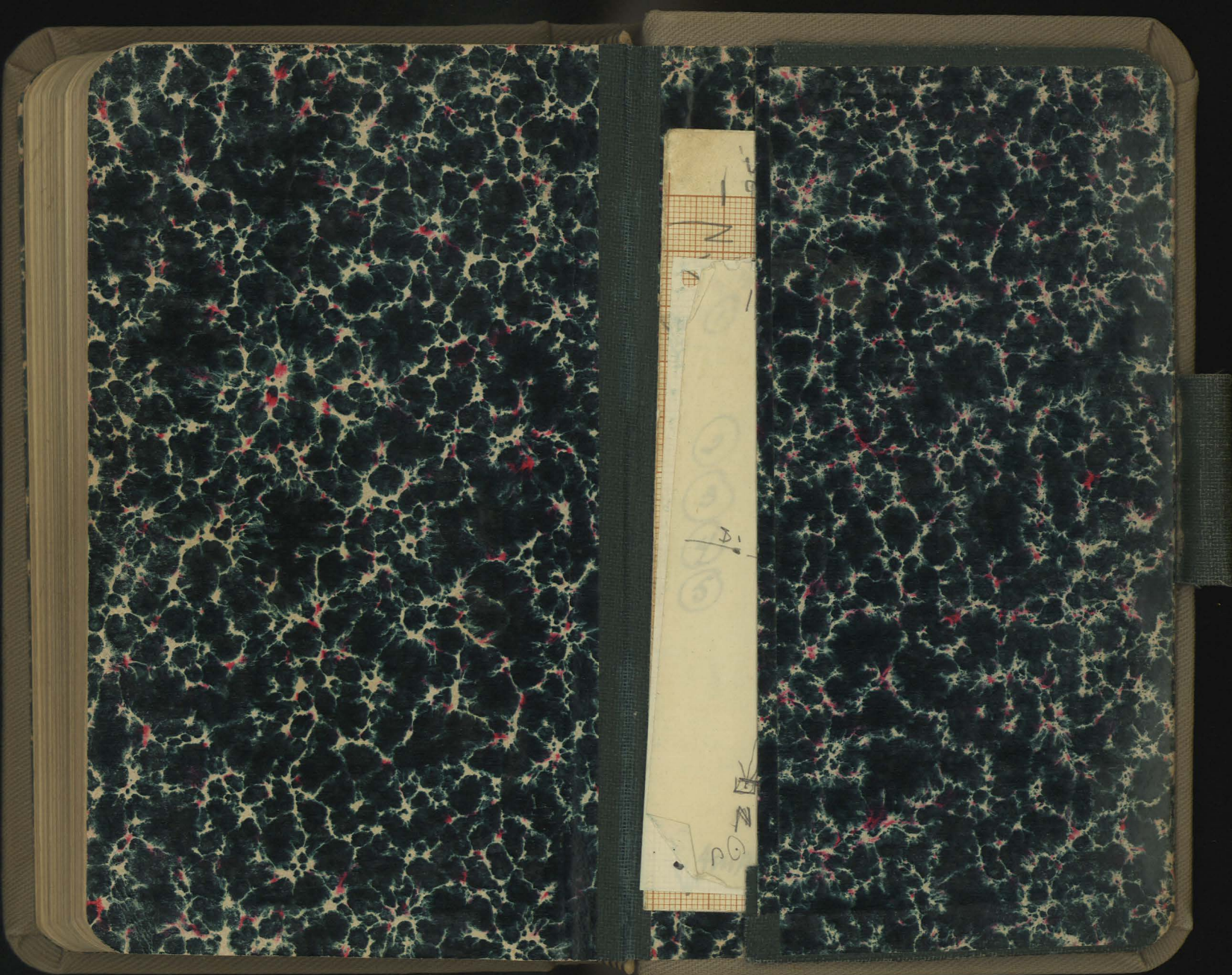
6.24

423 420  
268

625

Gen Plan Low Cen

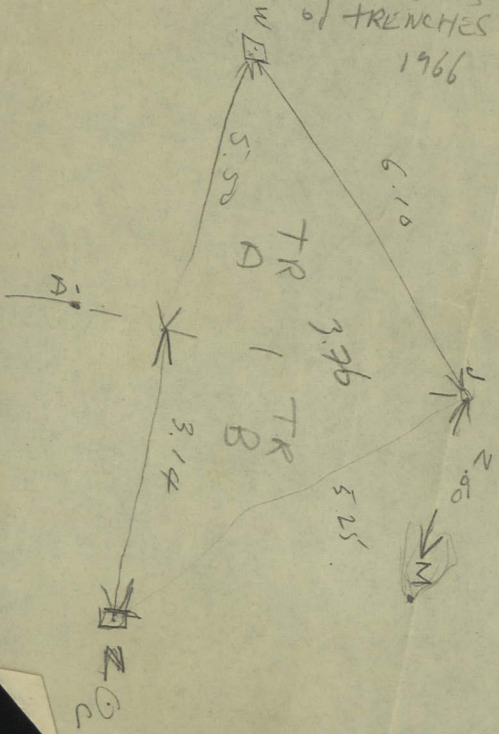
Position of XVII from X, 13



KPH EUP

Dimensions  
of TRENCHES

1966



① Kph. crucible frag.  
clay  
Kph. - 6.43 41

② ditto slag? 6.44?

---

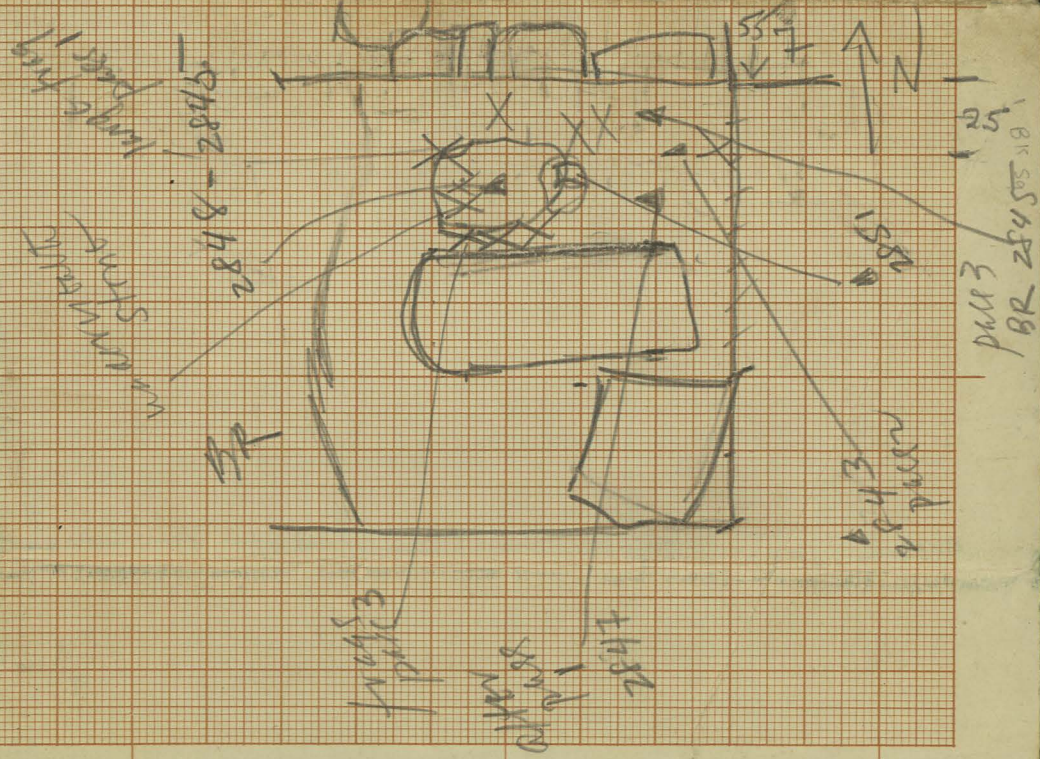
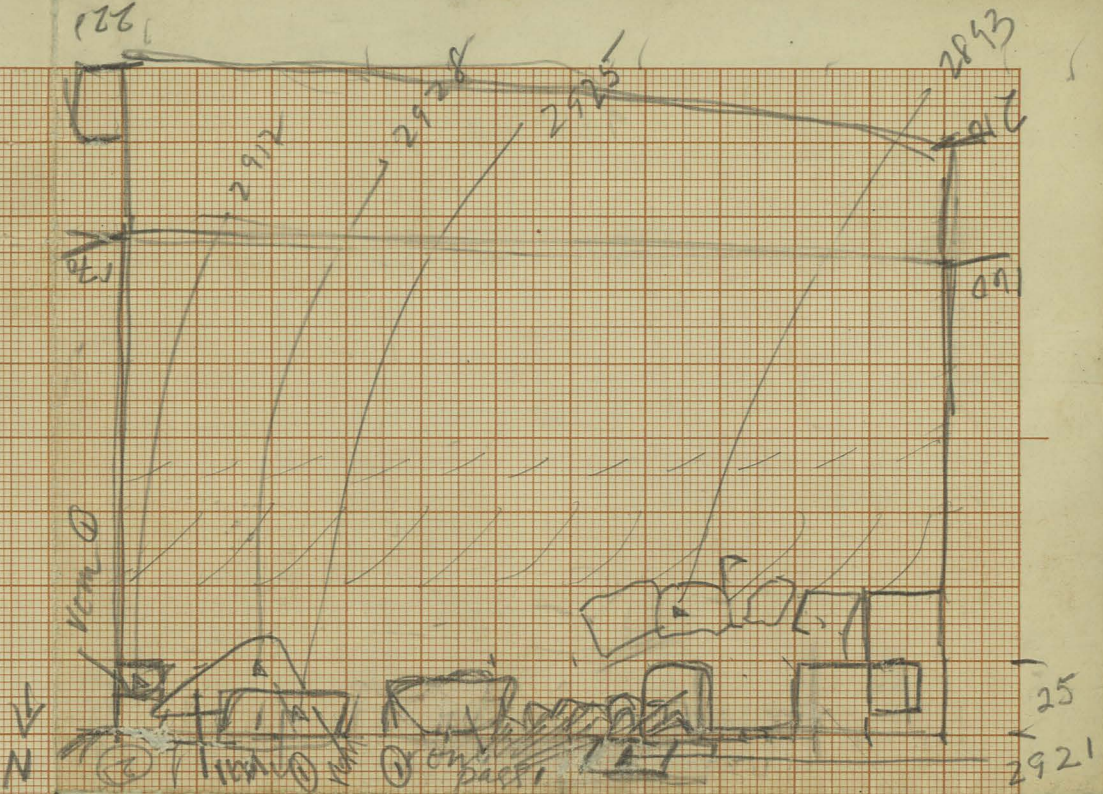
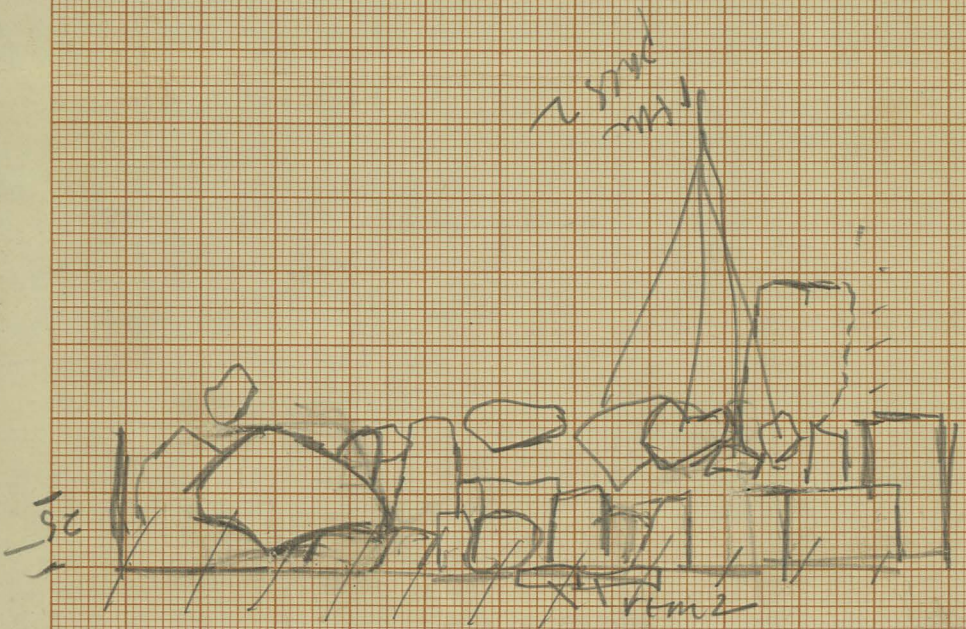
③ ore KF - 6.48 58

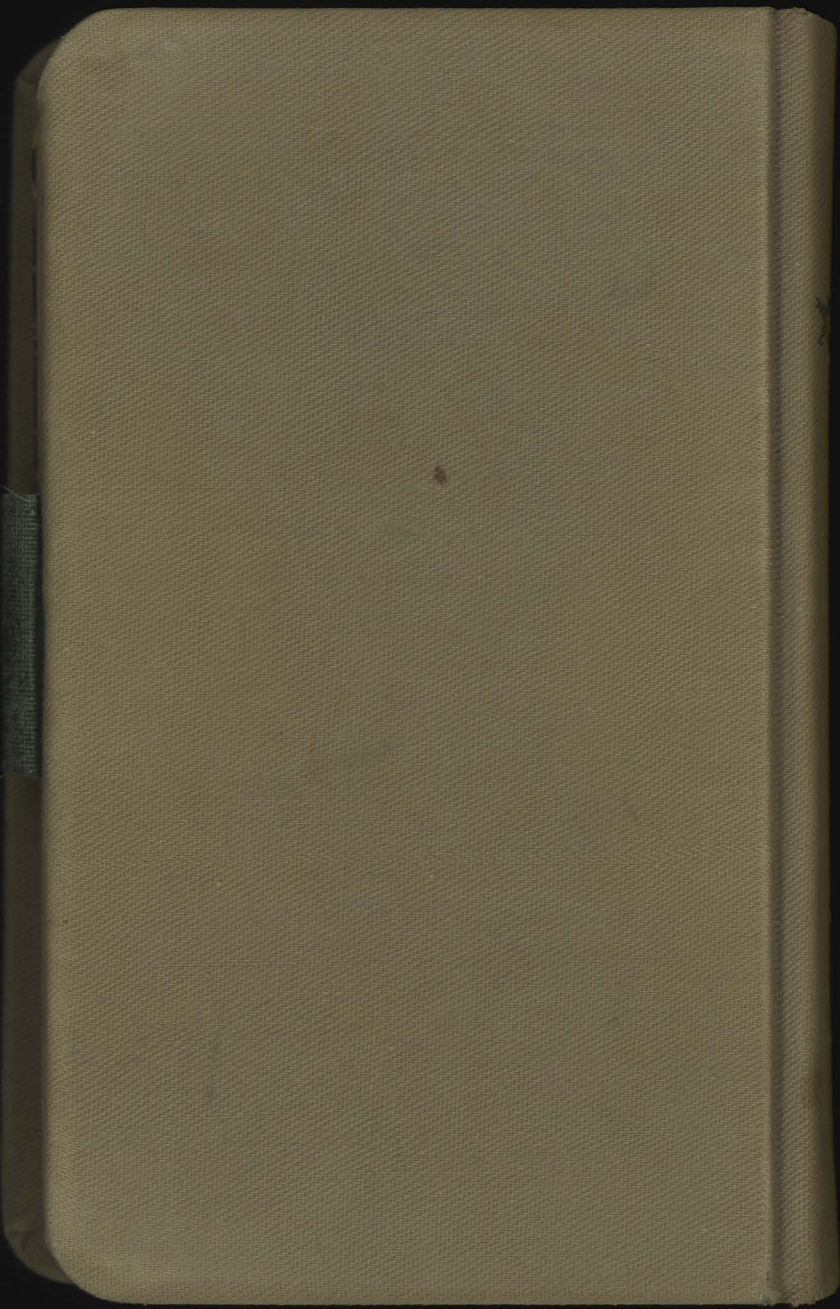
④ #80 sample of slag

⑤ emery axe Kph 436

SAMPLES TO ENGLAND







X

XXV

XXVI