

Argive Heraeum

WTS

ATH II

A

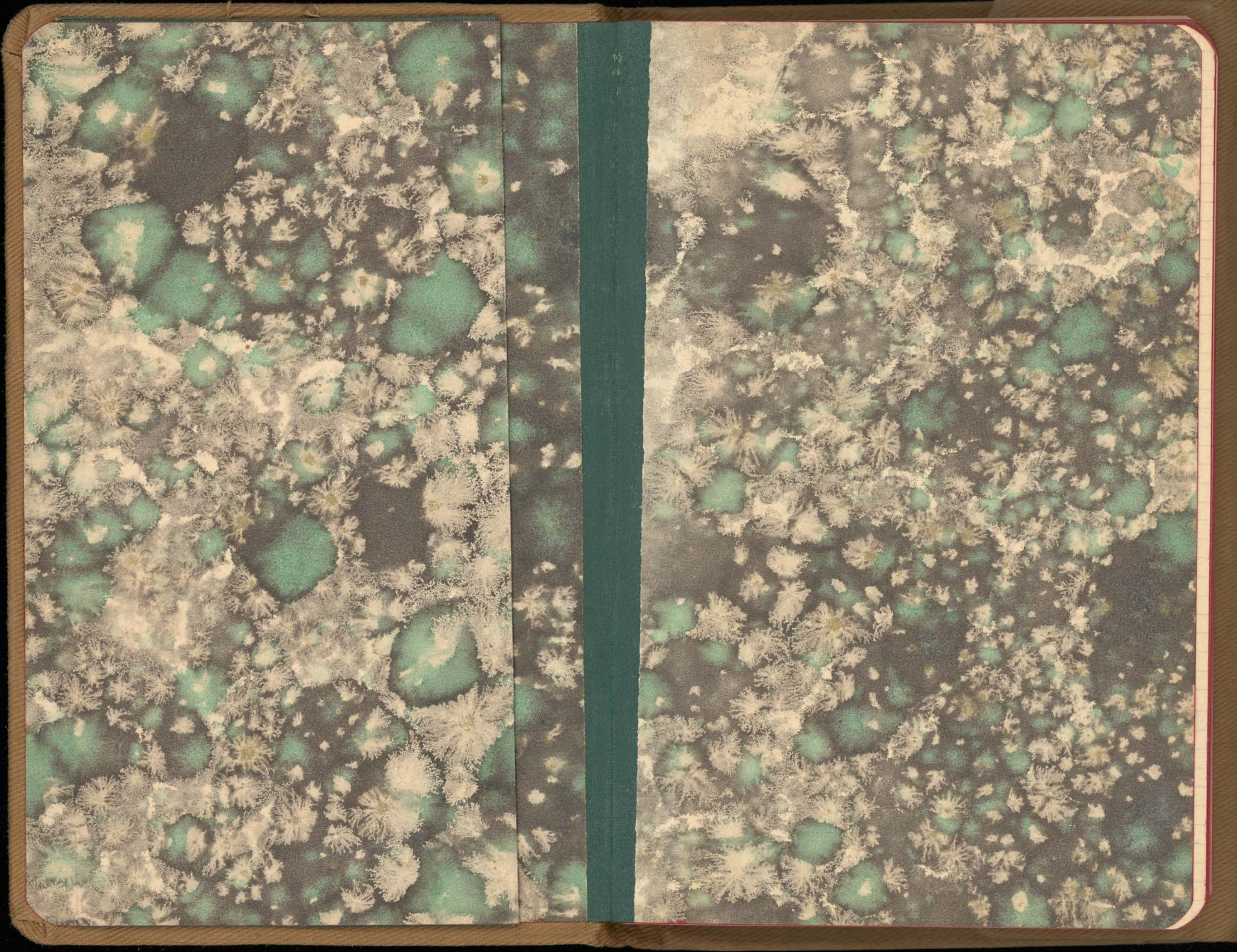
Hf

WTTB

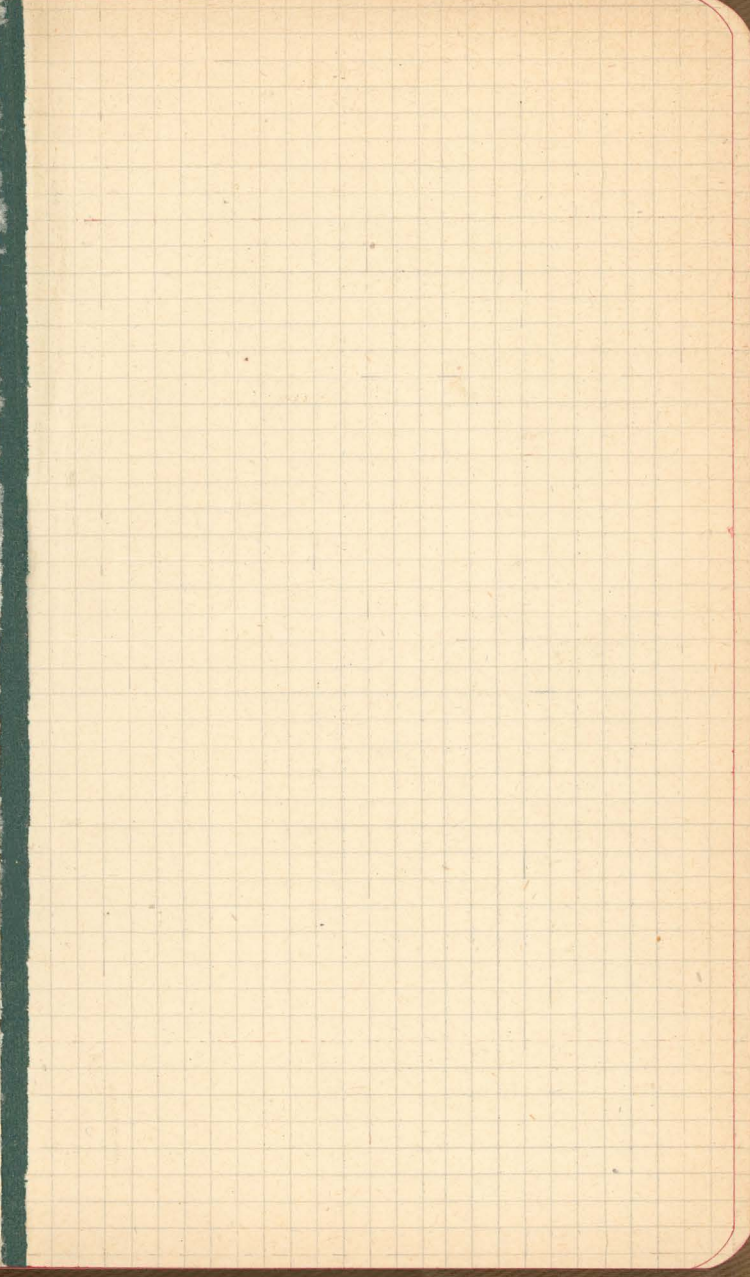
ATTH II

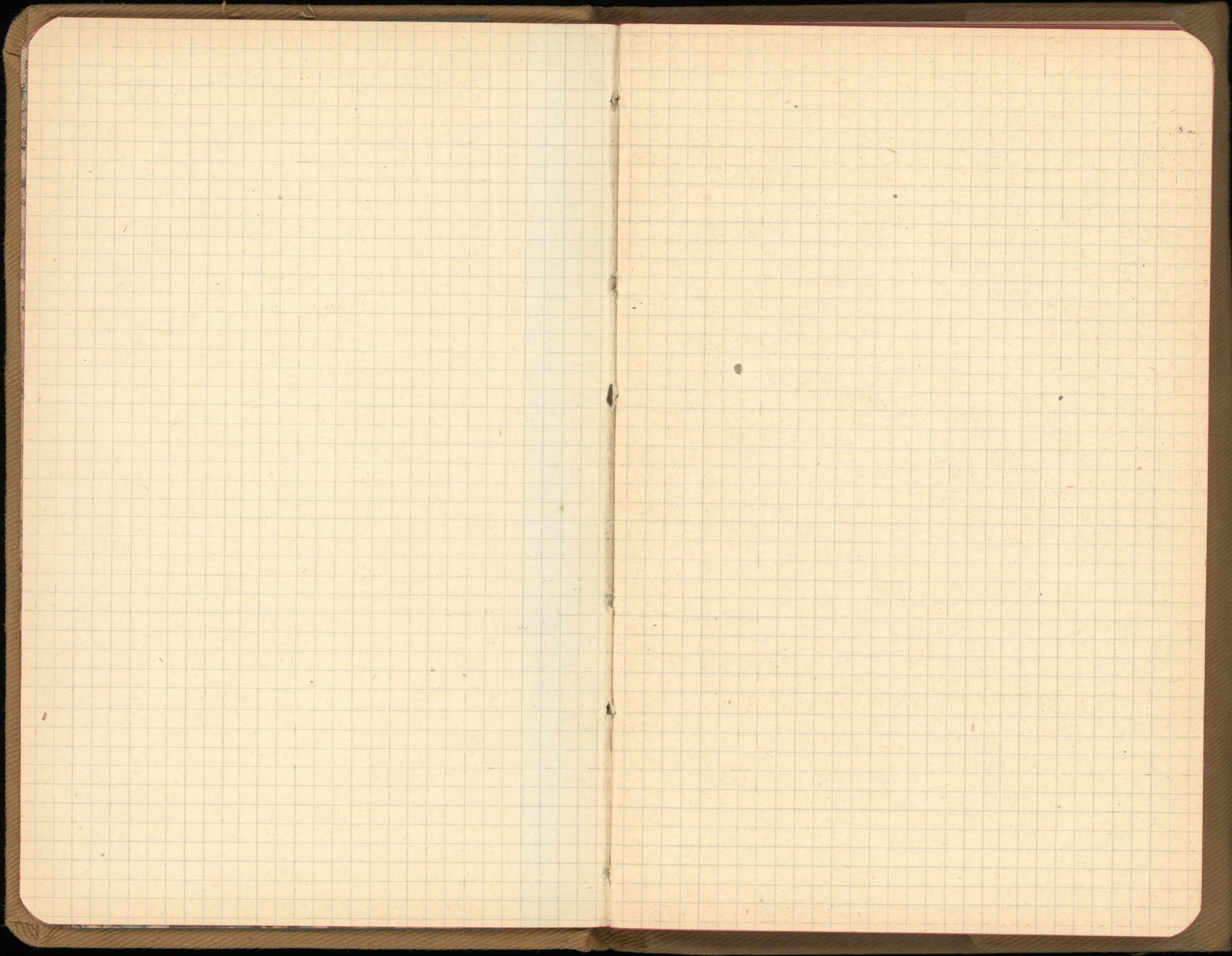
II

1992.8



Apphia Haek - Book II





No. 48

April 28
Wednesday

(9)

1. Nestor and boy digging shallow,
pitlike hole in trench in early morn-
ing - N. thinks he has a nibble
about 9:30 - B. arrives ca. 10:00, viruses
thrown as N. is not sure about
such thing - by noon pretty well
covered by N. inclined to keep
drogs ^{all day} too narrow - stones of
door found early afternoon - small
cavity behind removed stone
indicates work in building field -
Start to clear out entire doorway.
about 2/3 finished by nightfall -
Door irregular stones - no ordering
or symmetrical construction
remaining -
Few shreds of no importance
found (B. says)

x rough group of stones at top -
no stones beneath -

April 27 Friday

x walk out ca. 20 cc
random

→ ROMOS

- a) length to stoves side 3.35 M.
 b) width at entrance - too badly cut
 c) width at door - Top " " "
 " " " - bottom ca. 1.25 M
 d) height at door - ca. 1.60 M

x have stones doubleless
 thrown into doorway
 where it had been already filled
 w/ mud to top - have noted
 on file and not on door -

Steps

- a) Stoves side to bottom step 1.80
 b) height 1st step .10
 c) width " " .38
 d) height 2nd .20
 e) width " .30
 f) top step frozen

B. decides to stop slow digging at
 bottom and whole end - ~~in a rough~~
 group of stones at top to be removed
 together with earth for 1 meter -
 only packed earth between group of
 stones at top and group at bottom -

Near top beneath stoves small bronze
 disk with handle - votive mirror -

Abur II - it becomes fairly clear that
 stone over door fell in, carrying whole
 door beneath it - heaped pile of door-
 stone on bottom - wonder why some
 large stones of top of door still in
 unbroken approx. in situ! -

Fallen stones nicely cleaned and
 photographed 3.05 [no. D-57] will
 take 2 1/2 hrs to take when light better -
 2 1/2 steps photographed [D-58] - sun very
 low - should be fine pictures - glad to have
 half destroyed step indicated -
 2nd photo of stones [D-9] 4.15
 at bottom

No. 48

April 27

(12)

Friday

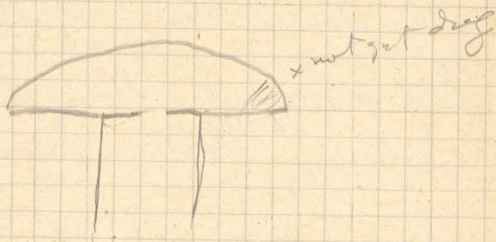
Stones at bottom removed -
Door posts very broad -
Entrance very narrow ca. 60 (?) -
Looks like very small tunnel -
Apparently widens toward left -
Earth inside quite tight & loose -
Still working with pick -
3 men working most of day

No. 48 April 28
Saturday

(13)

Continue excavating top soil
in tomb -
8:30 fragment of skull found
in middle rear of tomb -
3 men working -

Closing - chug all day -
nothing further found -
getting down to about .30 of bottom
apparently -
w. doors out both sides -
seems quite low and not
very deep



No. 48

April 30
Monday

(14)

Started with 2 men - one
added ca. 900 lb. cony -
Little of lip got took - removed
for fear of falling -
right corner almost reached -
nothing but earth & small stones

Left ca. 2:30 -
Up to this time nothing
found - continued removing
earth - Mr. B. accelerated
work as much as possible -
B. reported in evening
that nothing had been found

No. 48

May 1st

(15)

Thursday

arrived about 8³⁰ - Find
of bones reported -
one good man digging, one
fair and old Nestor
coming out east to -
Tomb opens up well toward
rear - not quite so wide
to Right as to left -
apparently whole roof
crushed in somewhat,
though not completely fallen -
Bones within fairly well
whole skeleton - 13 or 5 or 6
shoulder blades lies at foot -
ca. 1 - M. femur & skull -
Hardly more than .30 M.
of earth left to remove -

ca. 12-15 bones
in all

Goat found ca.
76 M from surface
bottom

In afternoon 2 men used
1 shovel
2 carrying

5

I picked from ca. 11
to 6.

shard found ca.
30 M from bottom

no 48 May 1st
Tuesday

(16)

Bones develop as skeleton
of goat - skull well
preserved - one jaw-bone
with teeth to right of
skull - I think it does not
belong to skull. (a 2nd goat?)
skeleton of goat left on
earth dug out & photo taken
to ca. 40 M - goat photo -
caption by B. and drawn
by Miss C. ca. 5. - goat photo
taken under goat about
electrod to level by G. -

Goat: possibly animal }
sacrifice - owner }
perhaps a shepherd }
one fragment of shard found.
also few chips of stone -
small bits of carbonated
matter found

Goat - got
sick, animal
in back end
died

2 inside digging
1 loading
1 outside, carrying
(nestor)

no. 48 May 2nd - Wednesday (17)
Human skeleton began to appear
in left crater - Then pots came
into view - 7 disclosed by
noon - all whole except
one with broken lips and
another with crack in body -
all brohaje old -

Force reduced from 5-6-3-
to two men to do work -

I picked ^{9:30-12} at morning - boy
discovered all bones and 6 pots -

I disclosed 1 pot -

Continued clearing out west
of tomb down to level of pit
found - This chow not quite
finished by noon -

Floor of tomb ca. 60 M below
highest established floor of
dromes - Wonder if we have
found real floor of dromes?
Have not yet removed all
stones of floor - ca. 30 M
remain to keep at possible
recess -

no. 48

May 2nd
Wednesday

(18)

scraped all afternoon -
I found one pot at
extreme right hand corner
fragments of bone found near
toward door -

Full skeleton with skull
found at 4. - scraped all
around my camp and
quite deeply - found no
thing else -

one man added -
Louis picked a while be-
fore lunch and all after-
noon -

Too many in tents - two
men removed - L. & I with
1 man to remove dirt and
1 to carry it away
all latter part of afternoon -

Five pots in all found -
1 quite broken - 1 only a
part there remaining so
far -

June 5

From page 168 Book I

(19)

Thursday

June 7

making 6 in all.

Door removed. Small cists

cleared - find 1 crystal head

0.02 wide X 0.015 thick.

cist 7

(20)

Friday
June 8Temple Terrace - Shaft piers # 108
from page 123 Book IThe shaft pier trenches # 2, 3, 4, 5, 6, 7,
were filled.On the ^{sample} terrace Trench #108 reached
in eastern section depths of 2.80
and 1.30.in the middle section, the greatest
depth was reached at depth of 3.80The long narrow hole measured when
work stopped 2.30 long - 0.20 wide
at narrow (west) end and 0.80 wide
at east end.

Joint IX Summary -

(21)

The domes of Joint IX runs approximately
west to east.It is 5.25 long, measures 0.79 at
outer end and 1.23 at door.The sides have a slight inward inclination.
The domes is 1.80 deep at door.
The inner corners are right angles.

The floor has a very gradual slope
for length of 3.20 from outer end
when it dips suddenly, leaving on
right side a step 0.35 high and
0.20 wide. Then the floor again
slopes gradually to door. The reason
for this sudden depression is
seen in the presence of a cist
measuring 1.62 x 0.40, covered
with flat stones, which lies along
left side of domes running out from
left joint. This cist probably was
dug after tomb was first used.
In that case there must have
been tall steps from domes into
tomb at door. When the cist

Domes at door is 3.40 from joint &
domes; at outer end 2.00.

(22)

Tomb IX

was closed, it measured 1.45 long X
0.30 wide at outer end and 0.27 at inner
end and 0.40 deep. Nothing found in it.
In chambers at 0.50 above ^{the} floor level against
left wall
were found two broken small pots at
1.80 and 1.70 from door. These were
red unglazed coarseware - probably geometric.

Door - was 1.40 high (top stones gone)

The top course was almost straight -
curved down a little on the left side.

It was composed of fairly small
irregularly laid stone - one large
stone on lowest course. It had a
slight inward inclination.

Left jamb measured 0.33 wide
Right jamb measured 0.20 wide

Depth of door at left 0.80

Depth of door at right 0.85

width outside = 0.70

width inside = 0.88

Chamber

The chamber floor is 2.40
from surface of the ground. No
ceiling is preserved but the

Tomb IX

(23)

ledge of conglomerate overhangs ^a the niche
outlined at back.

The chamber walls have an irregular
outline. straight across front and
right side - bulging out in a deep
curve at left and again at the
back (forming a large deep niche).
Chamber measures 2.90 wide X 3.00 deep.
The chamber was dug from above
and before reaching floor level a
quantity of geometric objects were
found. These were:

- ✓ 1 bronze cup (broken)
- ✓ 4 bronze rings
- ✓ 1 large bronze fibula
- ✓ 2 bronze pins
- ✓ 3 large terra cotta spools
- ✓ fragments of bronze
- ✓ 1 bronze head
- ✓ 1 lead ring
- ✓ fragments of iron
- ✓ 3 small repoussé dots
- ✓ 2 badly broken bronze bowls

at left. at about 1.70 from floor
level were found several bricks
which showed signs of burning.

- 1 small coarse red pot found
1.20 above floor level near right

(24)

Zomb IX

wall 0.07 diameter, 0.07.5 high
 1 large coarse pot found in right side of chamber half way back at 1.00 above floor level. It resembled a modern flower pot - measured 0.20 in diameter - (top broken off)

Before floor level was reached a few objects were found which are probably Mycenaean

- 1 broken enameled earthenware heads
- 2 round yellow paste heads
- 1 steatite button.

at the back of chamber a line of blackened earth 0.20 ^{deep} wide appeared beginning 0.25 above floor level.

on the floor level were found

- 1 flattened bronze bowl } both tinned
 - 1 iron sickle } back
 - 1 large bone 0.30 in from } center of chamber
- right side of door

2 cists

- a. sketch see page (133) Book I
 long .80 from right side

(25)

Zomb IX

of door, 0.50 in from right anterior wall. It was covered with small and large irregularly placed stones. It measured 1.20 long, X 0.60 wide at inner end X 0.35 wide at door end X 0.28 deep. Nothing was found in this cist.

v. This cist ran along left wall and was covered also with irregularly placed stones. also irregular in height going from 0.34 high ^{at} near left front to 0.10 high further back. (sketch see page (134) Book I)

when cist was uncovered it was seen that stones had been placed to cover at back more than actual area of cist. Cist measured 1.60 long X 0.30 wide X 0.15 - 0.20 deep. one small round blue paste head found at back and at depth of 0.08.

fragments of a large myc. (?) pot found at front of cist. see page (66)

(26)

Tomb IX -

This tomb enclosing curbs had probably been robbed in geometric times - pattern would account for irregular placing of stones in apts.

Tomb VIII -

(27)

Tomb VIII lies about 11.00 to North East of Tomb VII - its dromos runs 56° East of South. The dromos was found by color (darker) not feel of earth.

The dromos is 5.25 long,
0.80 wide at outer end
1.30 wide at inner end
its corners are slightly rounded, its walls have slight inward inclination.

The dromos has a gradual downward slope for 2.90 from outer end where a step is outlined. 0.40 high - 0.40 wide, a second step is 0.10 below the first one, also measuring 0.40 wide and 0.10 high - edge of both steps slightly (unequal but average width is 0.40) from 2nd step to door, dromos again slopes gradually.

Myc. sherds, several cylix stems found in dromos.

The dromos depth at door is 2.00 below surface of ground.

Door height preserved was 1.15 top stones straight across door

see page 28

stones small, some flat, some rounded fairly regularly placed.

left door jamb is 0.33 wide

right door jamb is 0.23 wide

door is 0.75 wide at outer side

1.03 wide ^{at} inner side

door is 0.85.5 deep on left side
0.82 deep on right side -

sides almost vertical to height of 0.80

when they sloped in, stones on top course of door only 0.60 wide.

chamber. The chamber of Somb VIII lies under geometric grave # VIII dug in an earlier campaign (1927?) but however is larger, measuring 3.20 deep x 3.60 wide - it has no ceiling. The floor is 2.80 from surface of the ground at the back.

The chamber is irregular in outline. straight across left anterior wall, rounds a little at right anterior wall with rounded corners, curves out on right wall, with a ~~xxx~~ niche at right back. another niche is outlined ⁱⁿ at back wall, the

left wall curves gently to the front.

The chamber was dug out from above.

Dug to level of 0.40 above floor all the objects found were geometric;

1 small black cup at right side

1 bronze bowl (incised) broken in one place

4 bronze bowls (broken)

4 wire colla spools

1 bronze disc (broken)

1 bronze pin

1 bronze ring

pieces of bronze

when chamber was ready for first drawing:

in left corner were 2 pots, bones and one skull.

along left wall a placed skeleton, head to back wall ^{lying} on back to its waist, legs in contracted position turned on right side. tip of skull lies to left of other part. Below hip joint lay an egg shaped ^{metal} implement.

Back of this skeleton lies another with head near corner of niche and feet

Small x 1 1/2 x 1 1/2 inches
metal implement
found in chamber

(30)

Jomb VIII

near skull of first placed skeleton -
across middle of skeleton were placed 11
pots (6 in line) - (one pot had coloring
and pattern of polychrome matt painted vases)
this 2nd skeleton lay on slightly lower level
than 1st, but no pottery, later burial (why?)
at back in niche were 1 pot and a few
bones.

along right wall ^{filling} in niche and extending
to each side of it and out about 1 m.

was a mass of pots, bones and skulls -
(figurines)

In this mass were found a quantity
of heads and buttons: (defunct during clearing)

- 7 cylindrical paste heads
- 99 black olive pit shaped paste heads
- 4 steatite buttons
- 7 pendant steatite beads
- 2 flat paste heads
- 9 very tiny paste heads
- 2 very flat paste heads (resemble ^{knobs} ~~knobs~~)
- 4 black + white olive pit shaped paste heads
- 2 white cylindrical paste heads with
black spiral lines
- 1 black seal stone (animal design)
- 1 red seal stone (conventional design)
- 1 steatite small stool
- 1 fluted paste head

Here were six cists
I, II, III lying one behind the other
near front of door, spreading out

(31)

Jomb VIII

at at right; narrowing at left; walls
between them very low or missing at
left -

I In front cist were 2 skulls (at
opposite ends) and

2 steatite concoid buttons, 99 olive pit
black paste heads, 8 round paste heads, 1 white
olive pit shaped paste head, 1 steatite button, 2
round carnelian beads, 1 terra cotta button, 1 flat
steatite head, 1 fluted steatite black head.

measures 1.10 X 3.0 at right, 0.20
at left, X 0.24 deep.

Cist II next to Cist I had 1 skull.

measures 0.98 long, 0.57 wide
at right, 0.25 at left. 0.25
deep at right, 0.05 deep at left.

Cist III had 2 skulls, lies next to Cist II

measures 0.71 long X 0.37 wide.

0.27 deep at back, 0.08 deep at
front. These 3 cists could be considered
one. walls almost gone between them.

Cist IV lies 1.40 back of right side

of door. runs ~~from~~ front to back of chamber
measures 0.62 X 0.27. greatest depth
0.19. In this cist were found 1 skull
3 flat carnelian beads, 20 small round

(32)

Smt VIII

Carnelian beads

7 round paste beads.

2 small clover leaf shaped paste beads

Cist V lay under the legs of placed skeleton nearer door. it is oval in shape

Cists II

measures 0.95 long, 0.32 wide and 0.16 deep. contained 1 crystal bead

Cist VI

lay in left front corner.

Cists I

measured 0.55 m diameter X

0.22 deep. contained 1 skull.

(33)

Shaft grave trenches E XIX.

a series of seven trenches and one large pit was dug to south of "dump" of earlier temple excavations.

Trench # 1 ran about E. to W. about 17 m. from beginning of slope of dump. it was 2.4 long - deepest cutting 3.10 Eastern end on line with, and 3.00 South of S.E. corner of pit.

Trench # 2 began 0.60 west of line cut for shaft grave of 1925. It was 18.50 long. Deepest cutting 3.40

Trench # 3 is 27 m. long, greatest depth 2.45. runs about 5 m. from beginning of slope of 2nd mound in dump.

A large pit measuring 5.60 on east side, 9.00 on south, 7.20 on north and about 6.60 on west. The shaft grave of 1925 is at west end of this pit.

A stone wall height 1.10 and 0.60 wide divides pit into 2 unequal parts north section 1.30 wide, south 3.40.

(34)

Shaft grave trenches EXIX

Deepest part is 3.40 below surface.

Trench # 4 runs a little west of north stops 17 m. from ^{house} of dump - about 1 m. from from trench # 3 at obtuse angle -

It was 26 m. long, ending at South end in corner of Hellenistic house - at north end depth = 2.70.

Shards Myc. gray Mycenaean + coarse unpainted ware -

Trench # 5 runs a little west of north, ran into slope of dump - was 8.00 East of trench # 4. measured 22 m. long at N. end Stereo was reached at 2.60 about 3 m. from N. end a line of stones ^(house wall) found at depth of 3.00 - Stereo at North side ^{of wall} reached at 3.20, on south side at 3.40.

In this trench at upper levels were found a quantity of broken pieces of bronze ^(some L.H.I) down Myc. shards + 1 lead Myc. clump.

(35)

Shaft grave trenches EXIX -

Trench # 6 Long 5.70 East of

Trench # 5 + || to it. It was 20 m.

long. at north end Stereo reached at 1.10. Below a diag. wall, ^{near north} Stereo reached at 1.70 + 2.10. Below another cross wall Stereo at 2.50. Some bronze + fragments of iron at upper levels. Shards Myc. - some L.H.I.

Trench # 7 runs into North slope of dump 6.50 East of trench # 6. It was 10.50 long. at 2.90 from North end at depth of 0.65 a corner of house wall protrudes from west side of trench. another wall 0.60 - 1.00 wide runs across trench, directly to S. of end of first wall. a third wall runs diagonally across trench at 1.20 to south of second. (depth 0.20) -

Shards L.H. I, III + M.H.

a cutting above the South stoa was made about half way between South stoa and beginning of the temple terrace -

It measured 3.60 long X 1.90 wide at see page 10

(36)

Shaft graves

west end, narrowing to 0.85 at east
 steps reached at 2.80 from surface
 at back and 1.80 at front.

geometric sherds and a few pieces of
 geometric bronze were found to within
 a few cm. of steps when a very few
 myc. sherds were found.

(37)

Sample Terrace Trench + Pit.

a pit was dug 18.50 m. N. of rat
 and a little to east of it. Large stones
 at depth of 0.25 are foundations of
 altar of temple. ~~cutting~~ measuring
 2.40 along wall X 0.70 wide and 1.45
 deep dug to space east facing. In pit
 and east cutting were found chiefly
 geometric sherds, 1 gray myc. and
 some myc. In cutting was also
 found 1 bronze figurine, 1 paste

altar =
 2.45 long
 1/2 brick part
 of temple

scarab. altar is 2.40 wide and
 is 18.50 from S.E. corner of temple
 a trench # 108 running east to west by
 north measured .44 m. long. maybe
 divided into three sections.

section I 14.50 long began near N.E. corner
 of steps of N. terrace cut out of conglomerate.
 Depths reached in this section varied
 from 2.80 - 1.30. sherds mostly geometric
 a few myc. found 1 stone implement
 1 flint penile (?) (E.H.?)

Section II. measured 15.75 + was divided
 from section I by line of rough stones .0.75
 wide.

the greatest depth in this section was

Temple Terrace Trench #108

3.80, this being in a narrow hole
2.30 long, 0.20 wide at narrow end (west
0.80 wide at east end)

20 east of this hole, ^{were} 2 large flat stones
at depth at 2.40 and again to east at
depth of 2.60 eight smaller rounded
stones. above this hole at depth of
3.30 ran a stratum of very dark
earth 0.30-40 deep. Here were found
numerous gray Mycenaean sherds.

The western end of this section had a
series of ³ shelves or lines of stones
curving across trench from depth of
3.30 to rock at 2.10.

Section #3. measured 9.20 on ~~east~~ one side

8.70 on side toward pit + was separated
from middle section II by the
reinforcement of the altar walls.

This section was widened to 1.70 from
0.80 to expose more stones of a
Myc. house. The highest stone was
0.90 below surface. a drain of

Temple Terrace Trench #108

terra cotta at 1.50 below surface 0.65
long x 0.15 wide, continued by a drain
of stone runs diag. across trench. toward
lower level of stone which is probably a
street. Here also also traces of this
drain at 0.30 above terra cotta probably
coming from a house into street.

geometric sherds were found at high
level in this section, also several
Myc. sherds:

- 24 paste heads
 - 2 glass beads
 - 1 bronze bud or standard
 - 1 broken paste scarab
 - 1/2 geometric seal stone
 - 1 triangular black + white gem. bead
- at lower level M.H. sherds, than Myc.
where are the left gloves?

Myc. grave (?)

at 2.20 west of domos of Tomb VIII

at depth of 0.55 were uncovered

a group of large + small bones of skull.

a terra cotta animal figurine (de-
corated with undulating lines of

red + sepia) found lying across one

bone. ^(myc) at 0.75 S.W. of skull

at depth of 0.50 was found small
badly broken red myc. fig.

area enlarged to S. + W. in hope of
discovering more bones but nothing found

a grave? if so why no cover slabs,
why so near surface?

8 near door
3.70 wide

2 = 1 thick on right hand
3.64

6 = 1

10 = 1

25 = 1 deep 3.40

6 = 1

4 = 1

57 7

7

64

Puppy

I 2
II 4
III 6
IV 10
V 8
VI

I 2
II 4
III 6
IV 10
V 6
VI 6
VII 4

10 deep 6
25 deep 3.40

57
7
64

